

AN EVENING of

MAGIC!

September 27, 2014

Benefit Auction
& Dinner Dance

6:00PM	Cocktails, hors d'oeuvres & Silent Auction
8:00PM	Silent Auction Closes & Dinner Begins
9:00PM	Live Auction & Dessert
9:15PM	Magic & Mystery with magician Ron Saylor
9:45-11:00PM	Dancing
10:00PM	Pick-up & Pay for Auction Items

Sponsored by



Connecticut
Light & Power



WebsterBank



BOUVIER
INSURANCE
CHAMPION



IMAGINEERS LLC

CHRISTIE'S

Helping you help others *is what matters most.*

Everyday, we live up to organizations like yours who are dedicated to making a difference in our communities.

We hope that our support will, in some way, contribute to the valuable work that you do. *After all, that's what matters most.*

**See what it's like when a bank lives up to you.
Visit WebsterBank.com.**

We're pleased to sponsor the annual Florence Griswold Museum's Benefit Auction, and we wish you much success with tonight's event.

Nancy Scirocco
Vice President
nsirocco@websterbank.com
860.692.1619



WebsterBank

LIVING UP TO YOU™

©2014 Webster Bank, N.A. Member FDIC. All rights reserved.
The Webster Symbol and Webster Bank are registered in the U.S. Patent and Trademark Office.

Proud supporter of the
arts & education

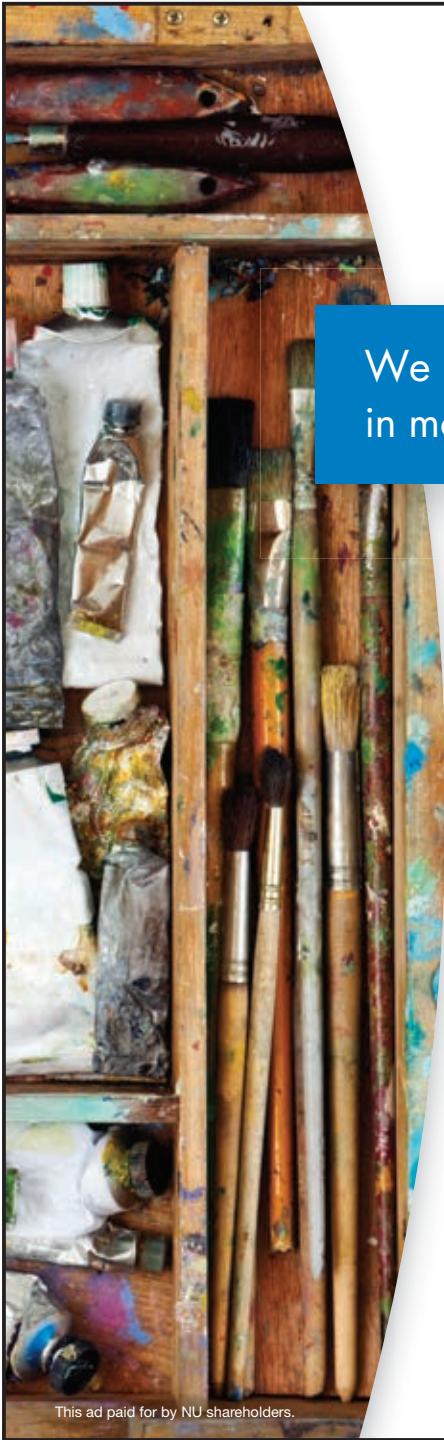


*Imagineers is pleased to sponsor the
Florence Griswold Museum and their
2014 Benefit Auction & Dinner Dance*

635 Farmington Avenue
Hartford, CT 06105-2999
860-768-3300
Fax 860-236-3951

249 West Street
Seymour, CT 06483-2650
203-463-3200
Fax 203-463-3299

www.imagineersllc.com



We bring energy
in more ways than one.

Our support for
the Florence Griswold
Museum is just one
shining example.



**Connecticut
Light & Power**



Northeast Utilities Companies

This ad paid for by NU shareholders.



MAGIC!

Fittingly for the theme of this year's gala, we are honored to present a performance by magician Ron Saylor of Los Angeles, CA. Saylor and his assistant will entertain our audience with a show that will leave you wondering how did he do that?! *Ron Saylor: Magic & Mystery* is generously made possible by a trustee of the Museum.

SILENT AUCTION BIDDING INSTRUCTIONS

Bidding will begin September 27, 2014, at 6:00 p.m.

EXPRESS CHECK OUT: To avoid long lines at the end of the evening, please take advantage of our express checkout. Signing up is easy – look for the express check out table in the lobby when you first arrive. At the end of the evening, you will proceed directly to pick-up and claim your auction items.

BIDDING INCREMENTS: To place bids, print your BID NUMBER and the amount of your bid on bid cards located near the auction items. The minimum bidding increments are:

Value of Item	Bidding Increment
Up to \$200	\$25
\$201-\$750	\$50
\$751-\$2,000	\$100
\$2,001+	\$200


Proper bidding increments will be clearly posted on the bid board for each item. Bids that do not meet the required bidding increments will be disqualified. You may, of course, place bids higher than the minimum required increment.

BID POSTING: High bids will be posted at approximately 10:00 p.m. Shortly thereafter, successful high bidders may proceed to checkout to claim their items and make payment.

PICK UP & PAY: Auction items may be picked up beginning at 10:00 p.m. Saturday, or between 11:00 a.m. – 1:00 p.m. Sunday, unless special arrangements have been made. Please make payment at the admissions desk. Cash, personal checks, Visa, Mastercard, American Express, or Discover will be accepted. The purchaser will be responsible for transporting the auction item(s).

CONDITIONS OF SALE: All proceeds will benefit the Florence Griswold Museum. The Museum assumes no risk, liability, or responsibility for the authenticity of the authorship or any property identified in this program. All property is sold "as is." The Museum makes no representation or warranties, expressed or implied, as to whether the purchaser acquires any reproduction rights in the property. The Museum reserves the right to dispose of the property in any manner it deems appropriate if the successful bidder does not remove the property within the agreed period of time.

All proceeds from this year's event will directly support the Museum's educational programs.


Congratulations
_____ *to the* _____

Florence Griswold Museum

IT'S MAGICAL!



Local. Tested. Trusted.

860-535-4415

MysticRiverPaintworks.com

Interior & Exterior Painting | Expert Wallpaper Installation

CT License #573839 • RI License #22989 • Suffolk County License #33652-H • EPA Lead-Safe Certified Firm #NAT-39542-1

THANK YOU!

Sincere thanks to everyone who helped
make our MAGIC! Benefit Auction a success!

Corporate Sponsors

C L & P
Imagineers, LLC
Webster Bank
Bouvier Champion Insurance
Christie's

Benefit Chair

Jane Rapport

Auctioneer

Jennifer Wright
Christie's New York

Auction Chairs

Jennifer Eio
Lisa Rhodes

Steering Committee

Paul Armond
Mary Ann Besier
Deetsie Bradford
Deborah Butler
Adam C. Calkins
Betsey Cooley
Jeff Cooley
Mary Dangremond
Jennifer Eio

Dianne Embree
Monique Foster
Liz Frankel
Hedy Korst
Marie Martin
Dawn McDonald
Cynthia Miller-Aird
Laura Mooney
Deb Moore

Ed Parsells
Marilyn Percy
Dennis L. Pough
Lee Pritchard
Lisa Reneson
Andrew Rubenoff
Pam Thompson
Sandy Thurston

Gifts In Kind

Andrew Rubenoff Design
Sennheiser

Framers

Art Emporium, Old Saybrook
Artisan Framing & Gallery, Niantic
Pedersen Frame, New Haven
The Wall Street Gallery, Madison

Special Thanks to

Lisa Reneson, invitation & program design

Magic!

“Design is thinking made visual” – Saul Bass

LET US BRING MAGIC TO YOUR HOME



POUGH

I N T E R I O R S

Pough Interiors is very proud
to support the Magic that is the
Florence Griswold Museum.

Pough Interiors | One Main Street, Essex Village

860-581-8344

www.poughinteriors.com



Passion the Essence of Essex Meadows

Living in a culturally rich environment inspires you. At Essex Meadows retirement community, you have more free time for cherished pursuits, and more opportunities for new enjoyment. Rub elbows with dreamers. Cultivators. Trekkers. People passionate about learning and living. Add lifecare's promise of a lifetime home and you have the seeds for a great future.

Follow your passion
Call 860-767-7201



30 Bokum Road • Essex, CT 06426
www.essexmeadows.com



Managed by  Life Care Services™

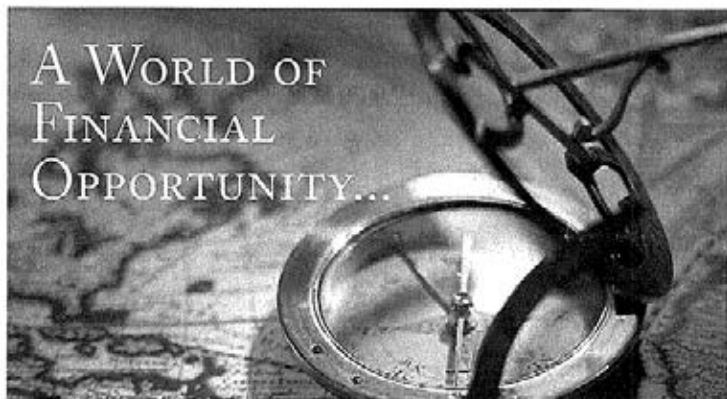




CENTERBROOK ARCHITECTS & PLANNERS

www.centerbrook.com (860) 767-0175

A WORLD OF FINANCIAL OPPORTUNITY...



PERSONAL • BUSINESS • TRUST • INVESTMENT SERVICES



Offices: Essex, 35 Plains Road, 860-767-2573 • Essex, 9 Main Street, 860-767-8238
Old Saybrook, 155 Main Street, 860-388-3543 • Old Lyme, 101 Halls Road, 860-434-1646
Madison, 99 Durham Road, 203-318-8611 • Chester, 203 Middlesex Avenue, 860-526-0000
In Connecticut Toll-Free 877-377-3922 • www.essexsavings.com

Member FDIC • Equal Housing Lender



Member FINRA, SIPC
Subsidiary of Essex Savings Bank

Essex: 176 Westbrook Road 860-767-4300 • Madison: 99 Durham Road, 203-318-8892
www.essexfinancialservices.com • Call Toll-Free: 800-900-5972

INVESTMENTS IN STOCKS, BONDS, MUTUAL FUNDS & ANNUITIES:

NOT A DEPOSIT | NOT FDIC INSURED | NOT BANK GUARANTEED | MAY LOSE VALUE

NOT INSURED BY ANY FEDERAL GOVERNMENT AGENCY

Jeffrey N. Mehler, CFP® LLC

*Financial Planning
and
Money Management*



147 Westbrook Road
Essex CT 06426
Telephone: 860-767-9700
Fax: 860-767-9701
Email: jeff@jnmehler.com

Fee **FO** Only

Proudly Supports:

The Florence Griswold Museum



OUR JOINT REPLACEMENT PROGRAM IS WITH YOU AT EVERY STEP

Seamless care that follows you from
diagnosis, to surgery, to your home.

middlesexhospital.org



The Smarter Choice for Care

MIDDLESEX HOSPITAL

BEST WISHES

Henry E. McGuire

BEST WISHES

Robert M. Del Gatto



Jon Butler

JONATHAN P. BUTLER AIA LLC 14 WEST LANE, NIAHTIC, CT 06357
TEL / FAX (860) 759-9180 JONB@BUTLERARCH.COM



William
Pitt

Sotheby's
INTERNATIONAL REALTY

We Salute You, Miss Florence!
Landlord of Connecticut Impressionism
(a realtor in her own time)

JENNIFER & JANE ASSOCIATES

#1 Essex Brokerage
2013 Total Sales \$47,436,500
#1 Listed Volume Sold in Lower CT Valley 2013
Connecticut Magazine 5 Star Realtor 2010-13
Licensed in Connecticut and Rhode Island



Jennifer Caulfield
860.388.7710
Jane Pfeffer
860.227.6634

Experience The Value Of Partnership

williampitt.com

ESSEX BROKERAGE | 13 MAIN STREET | 860.767.7488

OLD LYME BROKERAGE | 103 HALLS ROAD | 860.434.2400

Each Office is Independently Owned and Operated



©2013 Citibank, N.A. Equal Housing Lender member FDIC. Cit, Citibank, All Design and Citi with All Design are registered service marks of Citigroup Inc.

MORTGAGE FINANCING AVAILABLE 1.855.298.5650
citi



The Place to Go for Gourmet to Go

HOURS:

Monday-Friday 8-6

Saturday 8-5:30

860-395-1452

pastavita.com

**225 Elm Street
Old Saybrook CT
06475**



Shore Discount Liquors

Extensive wine selection, beer, soda, liquor

Ice and lotto

FREE DELIVERY!!!!

SERVING DEEP RIVER FOR 25 YEARS

211 Main Street
Deep River, CT 06417

860.526.5197 Phone
860.526.5413 Fax

WnBrSeller@aol.com *** www.ctwine.net



GITA SAFAIAN, DMD
HAMBURG COVE ENDODONTICS

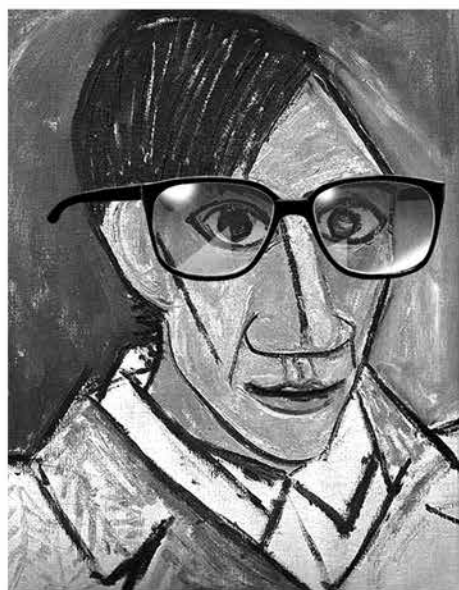
ROOT CANAL SPECIALIST



Hamburg Cove Endodontics | 248 Hamburg Road Lyme, CT 06371 | (860) 434-7434

eye DOCTORS

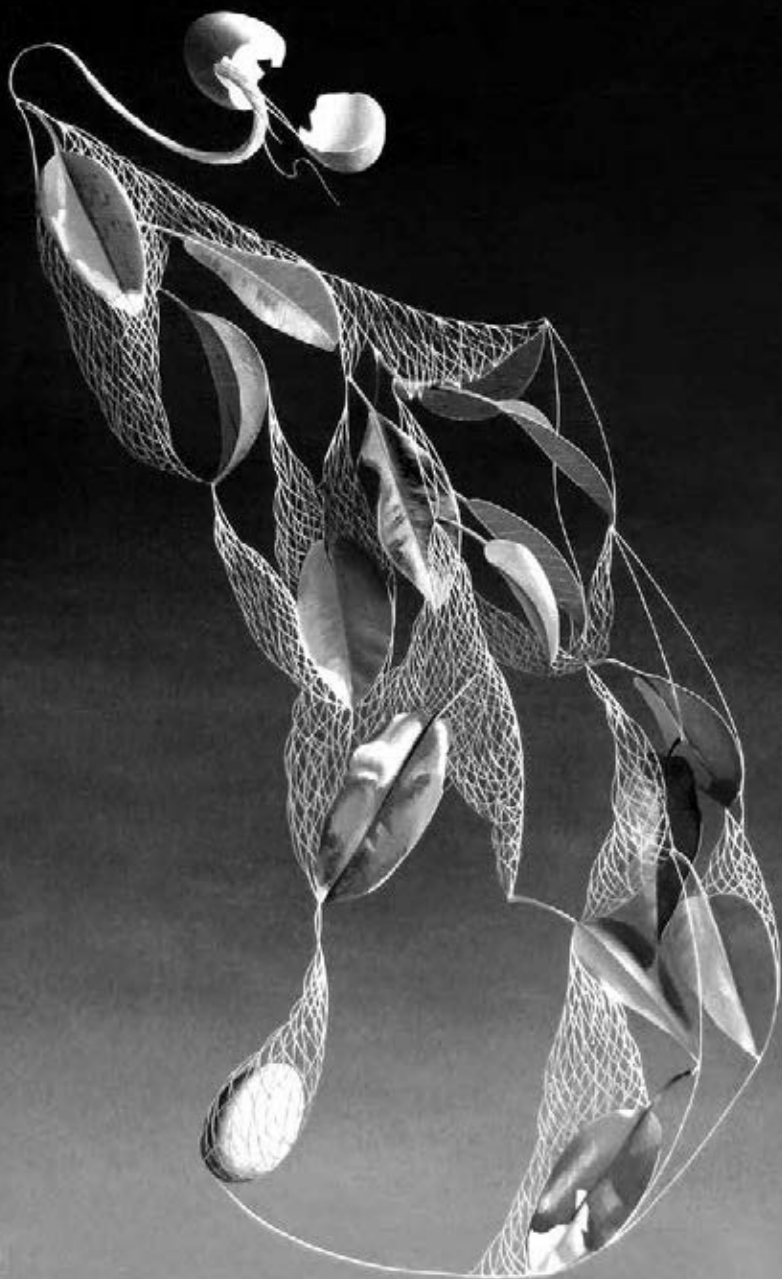
Elgart · Pinn · Gordon · Elgart
OPTOMETRISTS



Adult & Pediatric Eye Care
most insurances accepted

860-388-2020

Old Saybrook Guilford Deep River



Lodewijk Karel Bruckman (1913 - 1980) *A Magician's Dream*, oil on canvas, 32" x 20"

LIVE AUCTION

LOTS 1-4

Auctioneer Jennifer Wright

1

Wilson Henry Irvine (1869-1936)

Snowy Houses

VALUE: \$5,000

Oil, 24 x 18 inches. Born in Illinois, Wilson Henry Irvine showed an early talent for drawing. By 1895, he was enrolled in classes at The Art Institute of Chicago. In 1900 Irvine was exhibiting landscapes and becoming actively involved in the Chicago art community. He spent summers in Lyme from 1914-1917 where he became closely affiliated with the Lyme Art Colony and permanently moved to Lyme in 1918. His works are in many public collections, including the Florence Griswold Museum.

Donated by Mr. George M. Yeager



Lot 1

2

Your Choice of a Bike & Barge Tour to Holland or Belgium for Two!

VALUE: \$3,600

Enjoy a seven night bike and barge trip for two to Holland to view the tulips for your choice of the following dates: April 3-11, 2015, April 10-18, 2015 or April 17-25, 2015 or enjoy a seven night bike and barge trip for two to Belgium June 12-20, 2015. Trip includes daily breakfast buffet and 3-course plated dinner, bicycle rental, all entrance fees for group visits and local sightseeing, tips and taxes and an English speaking guide for the duration of the tour. Enrollment based on cabin availability on tour departure date selected. Airfare not included.

Donated by International Bicycle Tours Inc., Essex, CT



Lot 2

3

Spend a Day Training with Overland Experts

VALUE: \$1,750

Tap into your sense of adventure and experience the outdoors in a truly unique way—by learning the science of off-road and 4x4 vehicle driving. Go where others cannot or dare not as you and five friends spend one day training with Overland Experts. Valid for one year.

Donated by Overland Experts, LLC, East Haddam, CT



Lot 3

4

Dorado Beach Getaway for Two in Puerto Rico

VALUE: UNIQUE!

Dorado Beach, a Ritz-Carlton Reserve property in Puerto Rico, is a 50-acre private island retreat encircled by coral reefs, blue Caribbean waters, and a lush tropical forest. Enjoy a three night stay for two in an Ocean Reserve Room with beautiful ocean views; floor to ceiling sliding glass doors which open up to a spacious terrace with dining table; large marble baths with a deep soaking tub and separate rain shower; and an indoor and outdoor shower. Based upon availability and excludes all holidays and certain blackout periods. Valid through September 28, 2015.

*Donated by Dorado Beach, a Ritz-Carlton Reserve,
Dorado, Puerto Rico*



Lot 4

SILENT AUCTION

Paintings, Prints & Drawings

LOTS 100-128

100

Maureen McCabe

Ionia Rising

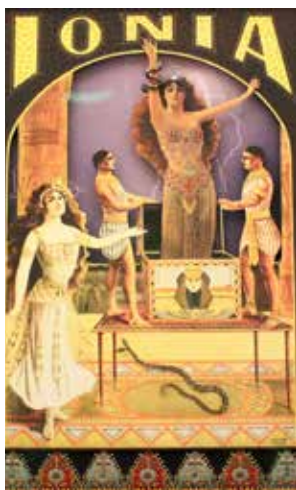
VALUE: \$1,500

OPENING BID: \$600

MINIMUM BIDDING INCREMENT: \$100

Mixed media assemblage, 10 ½ x 6 ¾ x 1 inch, 2013. Maureen McCabe's work has been described by *Art News* as having "a riotous, carnivalesque quality." She is an emeritus professor of art from Connecticut College, as well as the wife of FGM Director Jeffrey Andersen. This magical assemblage exhibits a mystifying and enchanting scene revolving around the figure of Ionia, a 19th-century magician. The back of this piece has a photo and signature from contemporary magician Ron Saylor who is being featured at the benefit.

Donated by the Artist



Lot 100

101

Nelson H. White

Cable Beach, Nassau, Bahamas

VALUE: \$4,500

OPENING BID: \$1,800

MINIMUM BIDDING INCREMENT: \$200

Oil on canvas, 9 x 16 inches, 2004. Nelson Holbrook White is the grandson of Lyme Art Colony artist Henry Cooke White. Inspired and instructed by his father and grandfather, Nelson decided to devote himself to painting. In 1955 he traveled to Florence, Italy, where he studied with famed painters Pietro Annigoni and Nerina Simi. He continues to work in the United States, Italy, France, Switzerland, and the Bahamas. Nelson has exhibited his work throughout the world and is represented in numerous private and public collections, including the Florence Griswold Museum.

Donated by the Artist



Lot 101 (detail)



Lot 102

102

Sandy Garvin

After the Snowfall

VALUE: \$1,400

OPENING BID: \$550

MINIMUM BIDDING INCREMENT: \$100

Oil on board, 12 x 12 inches. Sandy Garvin is a native of Old Lyme, studied at the Lyme Academy College of Fine Arts, and workshops around the country. She has exhibited at invitational shows in New England as well as private galleries throughout the country. Her works are in many prominent collections.

Donated by the Artist

103

Barbara Kacicek

Lean

VALUE: \$1,200

OPENING BID: \$500

MINIMUM BIDDING INCREMENT: \$100

Oil on panel, 8 x 8 inches, 2013. With a BFA in Drawing and Painting from Kutztown University, Pennsylvania artist Barbara Kacicek has exhibited in numerous museum and invitational exhibitions including the



Lot 103

104

Simka Simkovitch (1893-1949)

Two Women

VALUE: \$1,800

OPENING BID: \$700

MINIMUM BIDDING INCREMENT: \$100

Watercolor and pencil, 7 x 5 inches, circa 1925. Simkovitch was born near Kiev,



Lot 104

Russia and later attended an art school in Odessa before graduating from the Imperial Academy of St. Petersburg in 1918. He was sent to the United States in 1924 to do illustrations for Soviet textbooks and gained U.S. citizenship. Simkovitch integrated with the art world immediately and had a successful career in America. He executed major mural commissions throughout the country. Considered a master draftsman and an adherent of a certain classicism, he is at heart a romanticist preferring the dreamy colors of a Russian fairy tale.

*Donated by Abby M. Taylor Fine Art, LLC,
Greenwich, CT*

105

Del Bourree-Bach

Duo in the Snow

VALUE: \$2,200

OPENING BID: \$900

MINIMUM BIDDING INCREMENT: \$200

Acrylic on panel, 6 x 16 inches, 2006. Del-Bourree Bach is a member of the American Society of Marine Artists, the American Artists Professional League, and many other professional arts organizations. His works have received numerous awards and have been featured in many art publications. He



Lot 105 (detail)

is represented by The Maritime Gallery at Mystic Seaport, Courtyard Gallery in Mystic, The Cooley Gallery in Old Lyme, Left Bank Gallery in Massachusetts, and Hughes Gallery in Florida.

Donated by Barbara & David Preston

106

Ralf Feyl

Cathedral Woods #1

VALUE: \$2,400

OPENING BID: \$750

MINIMUM BIDDING INCREMENT: \$200

Oil on board, 8 x 10 inches, 2013. Ralf studied with the respected Bill Parks at the American Academy of Art in Chicago. He then traveled east to study at the Lyme Academy College of Fine Arts and became deeply inspired by the mysterious borderlands of the New England coast and the people who inhabit it. The Cooley Gallery offered Ralf his first exhibition in 1992, and has shown his work there ever since.

Donated by the Artist



Lot 106

107

Anita Soos

Cadence 90

VALUE: \$1,150

OPENING BID: \$500

MINIMUM BIDDING INCREMENT: \$100

Oil monotype, 18 x 18 inches, 2013. Anita Soos attended the Lyme Academy College of Fine Arts and also studied with Hugh O'Donnell. Her bodies of work are based on the observations of water and photographic studies over the past twenty five years and embodies the rhythms and cadences of water, reducing these patterns to their essence.

Donated by the Artist

Framed by Pedersen Frame, New Haven, CT

108

Katherine Simmons

Miss Flo's Garden

VALUE: \$950

OPENING BID: \$400

MINIMUM BIDDING INCREMENT: \$50

Oil, 12 x 9 inches. Katherine Simmons holds a Fine Arts degree from the Massachusetts College of Art and completed postgraduate



Lot 108

studies at Paier College of Art and the University of Hartford. She is an elected member of several professional art organizations and her work has been featured in publications such as *Connecticut Magazine* and *The New York Times*. She has found her artistic voice creating soft, poetic landscapes.

Donated by the Artist

109

Janine Robertson

River Mist

VALUE: \$1,100

OPENING BID: \$450

MINIMUM BIDDING INCREMENT: \$100

Oil on aluminum, 12 x 16 inches. Janine Robertson is a prolific, award-winning artist who paints luminous landscapes on aluminum and copper. Her paintings are known for their vibrant color, texture and glow. Janine began her career as a muralist and trompe l'oeil painter but has turned her full attention to landscape oil painting. Her work hangs in private collections throughout the United States.

Donated by the Artist



Lot 109

110

Judy Friday

Lilac Island

VALUE: \$650

OPENING BID: \$250

MINIMUM BIDDING INCREMENT: \$50

Etching ink on paper, 10 x 10 inches, 2013.

Judy Friday is a prolific Lyme artist who turns her creative eye to many mediums. She studied at the Lyme Academy College of Fine Arts and with Robert Reed of Yale. Her work has been exhibited widely throughout New England and the Midwest and has been shown in *House Beautiful* and *Metropolitan Home*.

Donated by the Artist

111

Evelyn Saczawa Dubiel

Winter's Pleasures

VALUE: \$500

OPENING BID: \$200

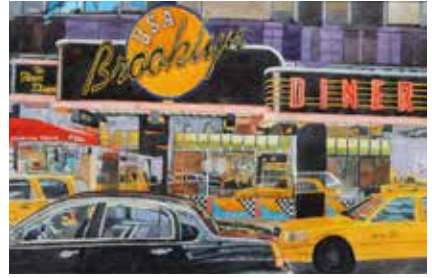
MINIMUM BIDDING INCREMENT: \$50

Watercolor, 8 x 10 inches, 2012. Evelyn was born in 1922 and resides in Glastonbury, CT. She is a self-taught folk artist who paints local Connecticut scenes using both oils and watercolors. Examples of her art are included in many private collections.

Donated by the Artist



Lot 111



Lot 112

112

Katie Beecher

Brooklyn Diner

VALUE: \$500

OPENING BID: \$200

MINIMUM BIDDING INCREMENT: \$50

Watercolor, 14 x 21 ¼ inches, 2012. A self-taught artist and member of the National Watercolor Society, Katie's watercolors have been in many national and international shows such as Watercolor USA, New England Watercolor Society, Northeast Watercolor Society, and New Britain Museum of American Art, among others.

Donated by the Artist

113

Lori Warner

Ferry Road

VALUE: \$1,690

OPENING BID: \$700

MINIMUM BIDDING INCREMENT: \$100

Monotype print, 16 ¾ x 17 ½ inches, 2013. Considered a master printer of monotypes, Lori Warner is a graduate of Rhode Island

School of Design and owner of Lori Warner Studio/Gallery in Chester, Connecticut.

Donated by the Artist

114

Ellen Priest

Jazz Brush Study

VALUE: \$2,300

OPENING BID: \$800

MINIMUM BIDDING INCREMENT: \$100

Gouache on paper, 36 x 36 inches, 2011. A graduate of Lawrence University, Ellen Priest received her Master of Divinity from Yale Divinity School. She has received two Pollock-Krasner Foundation Awards and has exhibited both nationally and internationally. Priest is inspired by rhythmic and harmonic structures in jazz and African and Latin American music, and has used jazz as the subject for her layered, collaged paintings since 1990. Her work can be found in many corporate and private collections.

Donated by Alva Greenberg

115

Michael Theise

Clean Slate

VALUE: \$1,500

OPENING BID: \$600

MINIMUM BIDDING INCREMENT: \$100

Oil on board, 10 x 8 inches. Michael Theise is a master of trompe l'oeil (fool the eye) painting. He is a graduate of the Paier College of Art and is considered a protégé of Ken Davies. He is represented in many prestigious collections and galleries, including Vose Galleries in Boston and The Cooley Gallery in Old Lyme.

Donated by the Artist



Lot 115

116

William Kent (1919-2012)

Owl and Cigar with Two Insects

VALUE: \$735

OPENING BID: \$300

MINIMUM BIDDING INCREMENT: \$50

Slate print on a synthetic acetate satin, 20 x 18 inches, 1969. While attending Yale University School of Music, William Kent became interested in art, and began to teach himself to paint, and then to sculpt in clay, stone, and wood. In 1963 he began to carve huge, discarded slate blackboards, and developed unique methods of printing on rice paper and mono-prints on fabric, working alone and without a printing press. The artist carved an Italian blackboard slate over a period of seven days in May 1969 and then used it to make this fabric print. His sculptures and prints are critically acclaimed and are in many public and private collections.

Donated by William Kent Charitable Foundation

Framed by Artisan Framing & Gallery, Niantic, CT



Lot 117

117

Lephe Kingsley Holden

Market Day

VALUE: \$750

OPENING BID: \$300

MINIMUM BIDDING INCREMENT: \$50

Watercolor, 16 x 22 inches. Lephe Kingsley Holden was a painter and art teacher who studied at the Art Students League and independently with Dwight Tryon and Guy Wiggins. She served as Director of Art Instruction in Westport, CT schools for many years. The artist exhibited her work widely including the American Watercolor Society, Allied Artists of America, the National Association of Women Painters, and from 1938-1969 at the Lyme Art Association.

Donated by James & Hedy Korst

118

David Dunlop

Farm Pond

VALUE: \$1,000

OPENING BID: \$400

MINIMUM BIDDING INCREMENT: \$50

Oil, 8 x 10 inches. David Dunlop is admired as an artist with a deep interest in and knowledge

of art history. Both as a painter and teacher, Dunlop pursues experimental methods and teaching techniques stretching back to the Renaissance. In 2006, Dunlop worked with Connecticut Public Television to film a well-received instructional painting series on the Museum grounds.

Donated by the Artist

119

Douglas Smith

The Brevillier Garden

VALUE: \$2,000

OPENING BID: \$700

MINIMUM BIDDING INCREMENT: \$100

Oil on board, 18 x 24 inches. 1994. Doug Smith is a popular artist who paints in the manner of the Lyme Art Colony Impressionists. His paintings are rich in color and filled with light. He has painted throughout Europe and Russia, producing many landscapes, still lifes, and figurative works.

Donated by Mr. & Mrs. John Pritchard



Lot 119

120

Sears Gallagher (1869-1955)

Incoming Tide

VALUE: \$850

OPENING BID: \$350

MINIMUM BIDDING INCREMENT: \$100

Drypoint, 6 x 8 ¾ inches, circa 1912. After studying in Paris, Sears Gallagher became a well-known painter, etcher, and teacher in the Boston area. He frequented Monhegan Island and was much inspired by the surrounding landscape. His works are in the collection of the Boston Museum of Fine Arts, the Boston Public Library, the Art Institute of Chicago, and the Honolulu Academy of Art, among many others.

Donated by Mr. & Mrs. Robert Czepiel

Framed by The Wall Street Gallery, Madison, CT



Lot 121

122

Susan Missel

Lemons & Garlic

VALUE: \$850

OPENING BID: \$350

MINIMUM BIDDING INCREMENT: \$100

Oil, 11 x 14 inches. After studying with Arthur Maynard and receiving a Master Degree in Studio Art/Painting from Montclair University, Susan Missel enrolled at the Art Students League in NYC, and continued her studies under painter Frank Mason. Both Maynard and Mason had been students of Frank Vincent Dumond, one of the leading artists of the Lyme Art Colony.

Donated by Fresh Ayer Gallery, Old Lyme, CT



Lot 122

121

Charles B. Ferguson

Shoreline

VALUE: \$450

OPENING BID: \$200

MINIMUM BIDDING INCREMENT: \$50

Acrylic, 12 x 19 ½ inches. Charles B. Ferguson, born in 1918 on Fishers Island, NY, received a Fine Arts degree from Williams College. After serving in Signal Corps Intelligence under General Douglas MacArthur during World War II, he studied with Frank Vincent Dumond at the Art Students League of New York. He later taught studio and history of art at secondary schools and was the longtime director of the New Britain Museum of American Art. He is represented in many private, corporate and museum collections.

Donated by the Artist

123

T.A. Charron

Beach Roses

VALUE: \$500

OPENING BID: \$200

MINIMUM BIDDING INCREMENT: \$50

Oil on canvas 12 x 9 inches. One of New England's leading plein air artists, Theodore Arthur Charron studied at the Art Institute of Boston and the School of the Museum of Fine Arts in Boston, and has received numerous awards for excellence in both painting and drawing. His artwork is featured in the permanent collections of museums and many private collections worldwide. T.A. Charron currently paints in his north light studio in southeastern Massachusetts.

Donated by the Artist



Lot 124

125

Eileen Gillespie

Two Branches

VALUE: \$600

OPENING BID: \$250

MINIMUM BIDDING INCREMENT: \$50

Oil, 14 x 14 inches, 2012. Eileen Gillespie is an artist who lives in Guilford, CT. She studied at the Rhode Island School of Design and the University of Pennsylvania. She was also a visiting artist at the American Academy in Rome. For the past seven years the woods behind her house and studio have served as a source of inspiration for her art. Her work can be found in many private and corporate collections.

Donated by the Artist



Lot 125

124

Tom Rose

Lord Admiral Jack

VALUE: \$485

OPENING BID: \$200

MINIMUM BIDDING INCREMENT: \$50

Giclée, 29 x 23 1/4 inches. In addition to owning and operating Black Whale Antiques at Rattleberry Farm in Hadlyme for over 30 years, Tom Rose's artwork has appeared in numerous national magazines, including *House Beautiful*, *Country Living*, and *Colonial Homes*. His latest endeavor is a series called, "Doggone Old Masters" — a light-hearted take on paintings of the Old Masters, this time with animals as the subjects. Tom's portrait of a Jack Russell terrier as a Lord Admiral will make a whimsical conversation piece for any home.

Donated by Black Whale Antiques, Hadlyme, CT

126

Rudolph Scheffler (1884-1973)

Respite

VALUE: \$675

OPENING BID: \$250

MINIMUM BIDDING INCREMENT: \$50

Graphite on paper, 11 x 13 inches, August 22, 1927. German-born Rudolf Scheffler studied art in Italy, Holland, France, and Germany before coming to the United States in 1924. He established studios in Brooklyn Heights and Lyme. In addition to painting, he was considered an important craftsman and muralist. In 1989, the Florence Griswold Museum showed a retrospective exhibition of his paintings.

*Donated by Shannon's Fine Art Auctioneers, Milford, CT
Framed by Art Emporium of Old Saybrook, Old Saybrook, CT*



Lot 127

128

Charles Philips (1737-1770)

A Rising Storm

VALUE: \$150

OPENING BID: \$75

MINIMUM BIDDING INCREMENT: \$25

Mezzotint, 10 x 14½ inches, 1770. This mezzotint by Charles Philips is based on an ink wash drawing by Willem van de Velde. It is from volume 2 of *A Collection of Prints in Imitation of Drawings* published by Charles Rogers, an eminent eighteenth century collector.

Donated by Old Beautiful Antiques & Art, Clinton, CT

127

Botanical Print

Phycella ignea

VALUE: \$175

OPENING BID: \$75

MINIMUM BIDDING INCREMENT: \$25

Hand-colored copper engraving, 9¾ x 6 inches, 1854. The years from 1760 to 1860 are considered the golden age of botanical illustration and botanical magazine publication. Robert Sweet made significant contributions during that period by publishing illustrated botanical works. This piece is from *The Ornamental Flower Garden* and was illustrated by Edward Dalton Smith.

Donated by Stephen & Susan Bates



Lot 128

DECORATIVE ARTS

LOTS 200-215

200

A David D.J. Rau Original

*If Alice Dreamt Up Lewis Carroll Before
Lewis Carroll Dreamt Up Alice: A Topsy-
Turvy Victorian Melodrama in One Clock*
VALUE: \$600

OPENING BID: \$250

MINIMUM BIDDING INCREMENT: \$50

Mixed-media assemblage with changeable L.E.D. electric lighting in antique mantel clock, 10 ½ x 18 ½ x 6 inches, 2014. This fantastical scene is based on Alice's Adventures in Wonderland and its author Lewis Carroll.



Lot 200

Made of mostly found objects, the assemblage was created by the Museum's Director of Education & Outreach David D.J. Rau in anticipation of this year's October event Wee Faerie Village in a Steampunk'd Wonderland.

Donated by the Artist

201

Aqua Celestial Cloud Garden Stool

VALUE: \$660

OPENING BID: \$300

MINIMUM BIDDING INCREMENT: \$50

Perfect for your garden or patio. This beautiful aqua colored handmade and hand-carved garden stool was dried and fired in the dragon kilns of Thailand. Can be used both indoors or outdoors.

Donated by Pough Interiors, LLC, Essex, CT



Lot 201

202

Vintage Hand-carved Teak Chest

VALUE: \$375

OPENING BID: \$150

MINIMUM BIDDING INCREMENT: \$50

This handsome vintage hand-carved teak chest would be a nice addition to a sitting room or front hall. It has a removable tray insert and brass hardware. Measures 31 x 15 ½ x 16 inches.

Donated by Mr. & Mrs. Rudolph F. Besier



Lot 202

203

Herend Bear Figurine

VALUE: \$400

OPENING BID: \$150

MINIMUM BIDDING INCREMENT: \$50

Add a unique touch to any room with this Herend Hungarian porcelain bear in a rust-colored fishnet pattern with 18 carat gold accents, 3 ½ inches long.

Donated by Bonsal-Douglas Antiques, Haddam, CT



Lot 203

204

Glass Bowl by Mundy Hepburn

VALUE: \$350

OPENING BID: \$150

MINIMUM BIDDING INCREMENT: \$50

Hand crafted blown glass, 11 ½ x 8 ½ x 8 inches. Mundy Hepburn's glass art has been exhibited in over thirty installations, and featured in five publications. Hepburn has made a name for himself with a unique style of



Lot 204

art-luminous glass. He also specializes in static sculptures, including bowls, cups, flowers, and both indoor and outdoor standing sculptures, an example of which was featured at The Florence Griswold Museum last winter.

Donated by the Artist

205

Mantel Clock

VALUE: \$400

OPENING BID: \$175

MINIMUM BIDDING INCREMENT: \$50

New Haven Clock Company mahogany inlaid mantel clock. Made in New Haven, Connecticut, circa 1900. Eight day time and strike. 7 ½ x 11 x 5 inches.

Donated by Kirtland H. Crump, LLC, Madison, CT



Lot 205

206

Patricia H. Smith

VALUE: \$250

OPENING BID: \$100

MINIMUM BIDDING INCREMENT: \$50

Porcelain wave plate, 13 x 12 x 2 inches. Patricia Smith was born and educated in Manchester, England. She moved to Paris, France where she studied ceramics at the ateliers of Francine del Pierre and Jean



Lot 206

Lugassy, and later taught at the American College in Paris and the Parsons School of Design in Paris. Pat maintains an active working life as an artist in porcelain, paper and mixed media at her studio in Old Lyme and in Paris. She has exhibited her work widely in the United States and France and earlier this year her work *Flowers on Fire* was on display during the Museum's *GardenFest* celebration.

Donated by the Artist



Lot 207

207

Cherry Candle Stand

VALUE: \$275

OPENING BID: \$150

MINIMUM BIDDING INCREMENT: \$50

This American country Hepplewhite candle stand will make for a charming end table or night table in your bedroom, living room or front hall. c. 1820.

Donated by Arne E. Ahlberg American Antique Furniture, Essex, CT

208

Pair of Clarence House Fabric Pillows

VALUE: \$600

OPENING BID: \$250

MINIMUM BIDDING INCREMENT: \$50

Add a decorative touch to any piece of furniture in your home with this pair of Clarence House fabric pillows with cream brush fringe and velvet backing.

Donated by Hannah Childs Interior Design, Old Lyme, CT

209

Antique Mirror

VALUE: \$350

OPENING BID: \$150

MINIMUM BIDDING INCREMENT: \$50

Ornate 19th century gilt mirror with floral motif, 22 ¾ x 30 ¾ inches. An elegant piece for any room in the house.

Donated by Mr. & Mrs. Rudolph F. Besier

210

Decorative Louis Vuitton Adorned Trays & Swarovski Crystal Letter Opener

VALUE: \$300

OPENING BID: \$150

MINIMUM BIDDING INCREMENT: \$50

These one-of-a-kind trays are perfect for any room in your home or the office. The larger of the two is an Italian wooden tray and the smaller is a 1950s black metal tray with gold trim. Both trays have a liner made from vintage Louis Vuitton luggage. Handmade by Lyme resident Marie Martin. Plus this whimsical letter opener handmade from polymer clay and adorned with sparkling Swarovski crystals by Billie Beads.

Donated by Marie Martin and Billie Tannen & Robert Nielsen, artists for Billie Beads, Brooklyn, NY

211

Japanese Splint Bamboo Ikebana Basket

VALUE: \$250

OPENING BID: \$75

MINIMUM BIDDING INCREMENT: \$50

This Japanese splint bamboo Ikebana basket, circa 1920, is a gem of this artistic tradition. It can be filled with fresh or dry flowers or potpourri. Ovoid form with three-footed base



Lot 211

and loop handles, 12 ½ inches in diameter.

Donated by Mr. & Mrs. James Korst

212

Pair of Vintage Brass & Glass Lamps

VALUE: \$450

OPENING BID: \$200

MINIMUM BIDDING INCREMENT: \$50

These vintage brass and glass lamps are nice accent pieces for any traditional or modern interior. 22 inches tall.

Donated by Mr. & Mrs. Rudolph F. Besier



Lot 212

213

Demitasse Cups & Saucers with Fruit Knives

VALUE: \$120

OPENING BID: \$50

MINIMUM BIDDING INCREMENT: \$25

Enjoy this exquisite set of six demitasse cups and saucers with gold and green accents produced by T&V Limoges, France, one of the premier porcelain manufacturers of the late 19th and early 20th centuries. Also included is a set of six faux bone handled stainless steel fruit knives by Frank Cobb & Company, Sheffield, England.

Donated by Mrs. Julie Lyman



Lot 213

214

Irish Cut Crystal Rose Bowl & Decanter

VALUE: \$125

OPENING BID: \$50

MINIMUM BIDDING INCREMENT: \$25

This Irish cut crystal rose bowl and decanter is a perfect match for any decor. The bowl measures 6 x 6 inches and the decanter 10 x 3 ½ x 3 ½ inches.

Donated by Donald & Carol Schwartz

215

1920s Sterling Silver Salver

VALUE: \$200

OPENING BID: \$75

MINIMUM BIDDING INCREMENT: \$25

Round and footed sterling silver salver, made by Gorham in the 1920s, 9 ½ inches diameter.

Anonymous Donor



Lot 215

EVENTS TO REMEMBER

LOTS 300-343

300

Dinner Overlooking the Thimble Islands

VALUE: UNIQUE!

OPENING BID: \$1,000

MINIMUM BIDDING INCREMENT: \$100

Enjoy dinner for ten at the waterfront home of Rob & Tricia Wilber, overlooking their beautiful gardens and the Thimble Islands in Stony Creek, CT. Dinner will include a champagne reception, followed by a multi-course dinner and appropriate wine pairings. An unforgettable experience for lovers of food and nature! Valid during summer 2015. Date to be agreed upon by both parties.

Donated by Robert & Tricia Wilber



Lot 300



Lot 301

for ten of your closest friends! Then enjoy afternoon tea with a specialist from the Old Masters department. Date and time to be mutually agreed upon, weekdays only. Valid through September 27, 2015.

Donated by Christie's Inc., New York, NY

302

Ocean House Sunday Brunch & Croquet Lessons

VALUE: \$800

OPENING BID: \$350

MINIMUM BIDDING INCREMENT: \$100

Ocean House is an iconic New England seaside resort, overlooking a private white sand beach with views of Montauk, Block Island, and the Atlantic Ocean. Take in a

301

Behind the Scenes Tour & Tea at Christie's Auction House

VALUE: UNIQUE!

OPENING BID: \$500

MINIMUM BIDDING INCREMENT: \$100

Enjoy a private behind-the-scenes tour of Christie's Auction House in New York City



Lot 302

Sunday jazz brunch and croquet lessons for four on the Ocean House's tournament-level croquet lawn. Croquet professional and winner of multiple championships, Teddy Prentiss, will be your teacher. Offer not valid in July or August, holidays excluded. Expires December 31, 2015, gratuity, tax and additional alcoholic beverages not included. A truly unforgettable event!

Donated by Ocean House, Watch Hill, RI

303

**Weekapaug Inn Sunday Brunch
& Boat Ride**

VALUE: \$700

OPENING BID: \$300

MINIMUM BIDDING INCREMENT: \$50

Take in the sweeping views of a tidal salt pond and miles of peaceful beach just beyond with a special trip to the newly restored historic Weekapaug Inn in Westerly, Rhode Island. Enjoy an intimate retreat and culinary fantasy with Sunday brunch for four, including a boat ride on the Quonochontaug Pond in the Inn's vintage Elco Launch. Part of the Relais & Châteaux family, the Weekapaug Inn offers comfort and low-key luxury in an unparalleled coastal setting. Subject to availability. Holidays excluded.

Donated by Weekapaug Inn, Westerly, RI



Lot 303

304

Four Tickets to Disney!

VALUE: \$400

OPENING BID: \$200

MINIMUM BIDDING INCREMENT: \$50

Enjoy four tickets to one of the following theme parks: Disneyland Resort in California, Walt Disney World Resort in Florida, Disneyland Paris, or Hong Kong Disneyland. Valid for one-day admission during regular operating hours through December 16, 2015.

Donated by Robert & Tricia Wilber



Lot 304

305

Private Dinner Party for 12 at the Museum

VALUE: PRICELESS!

OPENING BID: \$1,000

MINIMUM BIDDING INCREMENT: \$100

Invite your closest friends to an intimate dinner party in the Marshfield House here at the Florence Griswold Museum, where they will enjoy a delicious dinner catered by Gourmet Galley, the caterer behind the very successful Café Flo. Museum Director Jeffrey Andersen will welcome you and your guests and the galleries will be open for the first hour

to allow for a private viewing of the new fall shows. Friday, November 14, 2014, 6pm.

Donated by the Florence Griswold Museum and Gourmet Galley Catering, North Stonington, CT

306

Philip Johnson Glass House Tickets & Lunch at Le Pain Quotidien

VALUE: \$200

OPENING BID: \$100

MINIMUM BIDDING INCREMENT: \$25

Enjoy two site tour tickets to The Glass House. The site tour offers visitors a two hour guided $\frac{3}{4}$ mile walking tour of the site's pastoral landscape. In addition to the permanent collection and temporary exhibitions, visitors enjoy access to four structures designed by Philip Johnson. Advanced reservations required and subject to availability. Valid through November 30, 2014. Also enjoy a \$100 gift certificate to Le Pain Quotidien located on Elm Street, in the heart of New Canaan's downtown shopping district serving breakfast, lunch or dinner.

Donated by The Philip Johnson Glass House, New Canaan, CT and David & Elizabeth Frankel

307-316

Dinner Party in Killingworth

VALUE: \$150 PER PERSON

Enjoy dinner for ten at the Killingworth home of museum trustee Deborah Moore and her husband Roy. Dinner will feature Napa Valley California Cabernets from Roy's private wine cellar. This is sure to be a great evening of good food, wine and conversation. Saturday, May 16, 2015, 6:30pm.

Donated by Roy & Deborah Moore

317

NYC Ballet, Backstage Tour & Autographed Shoes

VALUE: \$548

OPENING BID: \$225

MINIMUM BIDDING INCREMENT: \$50

Immerse yourself in a truly magical evening at the ballet, reveling in the beauty of the dance on stage and behind-the-scenes at the New York City Ballet. The winner will receive two orchestra tickets for the performance of your choice during the 2014-2015 repertory season, while also having the unforgettable experience of watching a rehearsal and receiving a backstage tour. Your souvenir will be a pair of pointe ballet shoes worn and autographed by Ballerina Sara Mearns. Performance selection is subject to ticket availability.

Donated by Sally & Larry Lawrence and the New York City Ballet

318

Old Saybrook Sportfishing Charter Trip

VALUE: \$670

OPENING BID: \$275

MINIMUM BIDDING INCREMENT: \$50

Round up your fishing buddies for a sportfishing trip on the 41-foot Hatteras charter boat *Sea Sprite*. Departing from



Lot 318

Saybrook Point Marina, enjoy a half-day afternoon adventure for up to six people. Bait and tackle included. All fish will be filleted, bagged, and iced. Fun for all ages, including children over age six. A fun father-son outing! Valid through September 30, 2015.

Donated by Susan & Robert Staab

319

Hill-Stead Museum Tour

VALUE: \$400

OPENING BID: \$150

MINIMUM BIDDING INCREMENT: \$50

Hill-Stead Museum Director Susan Ballek will offer six guests a private “white glove” tour of this National Historic Landmark set on 152 acres in beautiful Farmington, CT. A wine reception will follow in the Sunken Garden (weather dependent). Renowned French Impressionist paintings by Monet, Degas, and Cassatt are highlights of the Hill-Stead collections. Tour date by mutual agreement on a weekday or weekday evening. Expires November 1, 2015.

Donated by Hill-Stead Museum, Farmington, CT

320

Golf and Lunch at Old Lyme Country Club

VALUE: \$425

OPENING BID: \$200

MINIMUM BIDDING INCREMENT: \$50

Work on your golf game with 18 holes with two carts for four players at Old Lyme Country Club. Analyze your game afterwards over lunch at the club. (Does not include alcoholic beverages.) Valid through May 31, 2015.

Donated by Robert Barbeau, Golf Pro, Old Lyme Country Club, Old Lyme, CT



Lot 320

321

Eastern CT Symphony Orchestra Tickets & Dinner at Tuscany

VALUE: \$308

OPENING BID: \$150

MINIMUM BIDDING INCREMENT: \$50

Take in two performances of your choice at the Eastern Connecticut Symphony Orchestra with two separate vouchers valid for the 2014-2015 concert season. (Each voucher admits two.) Sit in Section A of the orchestra and delight in a concert at The Garde Arts Center. Then enjoy a fine dining experience for two at Tuscany located in Mohegan Sun. All reservations are subject to availability.

Donated by Eastern Connecticut Symphony Orchestra, New London, CT and Mohegan Sun, Uncasville, CT

322

Tickets to Broadway's Supper Club, 54 Below

VALUE: \$300

OPENING BID: \$150

MINIMUM BIDDING INCREMENT: \$50

Take in an unforgettable New York nightlife experience at Broadway's Supper Club, 54 Below, combining Broadway's best with world class dining in an elegant setting. Steps from Times Square, 54 Below has undergone a complete renovation by Tony Award-winning producers. Enjoy four complimentary

admissions to a performance of the winner's choice, including \$25 worth of food and beverage per guest, to this only-in-Manhattan matchless nightspot. Valid through November 27, 2014.

Donated by Frankel Green Theatrical Management, New York, NY

323

New Musical *Hamilton* at the Public

Theater

VALUE: \$200

OPENING BID: \$100

MINIMUM BIDDING INCREMENT: \$25

Hamilton, written by the Tony and Grammy Award-winning composer and lyricist Lin-Manuel Miranda, and directed by Thomas Kail is a new musical about the life and death of Alexander Hamilton. Miranda will play Alexander Hamilton, one of our country's founding fathers and the first Secretary of the Treasury. The production will highlight a cast of historical figures that includes George Washington, Aaron Burr, James Madison, and Thomas Jefferson. Theater goers will enjoy two preview performance tickets valid January 20, 2015 through February 22, 2015.

Donated by The Public Theater, New York, NY



Lot 323



Lot 324

324

Stonington Country Club Golf

VALUE: \$380

OPENING BID: \$150

MINIMUM BIDDING INCREMENT: \$50

Treat yourself to 18 holes of golf at Stonington Country Club. Enjoy a weekday foursome with carts on this private, par 72 championship course. Tucked away off a country road among 140 acres of rolling hills and meadows, Stonington Country Club is in one of Connecticut's most beautiful pastoral golf settings. Proper dress required. Some restrictions may apply. Valid for one year.

Donated by Stonington Country Club, Stonington, CT

325

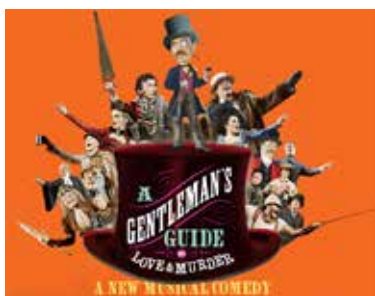
Tickets to *A Gentleman's Guide to Love and Murder*

VALUE: \$300

OPENING BID: \$150

MINIMUM BIDDING INCREMENT: \$50

Enjoy two house seats to *A Gentleman's Guide to Love and Murder*, Broadway's 2014 Tony Award-winning BEST MUSICAL! This knock-'em-dead hit tells the uproarious story of Monty Navarro, a distant heir to a family fortune who sets out to speed up the line of succession using a great deal of



Lot 325

charm . . . and a dash of murder. Playing at the Walter Kerr Theatre in New York City. Please provide three performance date options, indicating evening or matinee. Two weeks needed to process requests. Valid through the run of the show.

Donated by Ruth Hendel Productions, New York, NY

326

A Cabaret Performance and a Custom Cake for Your Next Soiree

VALUE: \$550

OPENING BID: \$200

MINIMUM BIDDING INCREMENT: \$50

Enjoy a one-hour cabaret performance with keyboard and vocals by the Peter Emanuel/ Jane Martineau Duo. With songs ranging from Broadway to the Beatles and beyond, this cabaret guarantees to make your next party a memorable occasion! Date and time to be mutually agreed upon. Valid for one year. Plus delight your guests at your next soiree with a custom designed, one of a kind cake to serve 30, by cake artist, Elisabeth Palatiello of But A Dream Custom Cakes. Date to be mutually agreed upon. Valid for one year.

Donated by Peter Emanuel/Jane Martineau Duo and Elisabeth Palatiello, But A Dream Custom Cakes, Guilford, CT

327

Lunch Overlooking Tiffany Farms for 6

VALUE: UNIQUE!

OPENING BID: \$300

MINIMUM BIDDING INCREMENT: \$50

Enjoy a luncheon overlooking Tiffany Farms on Johuatown Road at Treetops, the Lyme home of Fred and Marie Martin. Luncheon will include Maryland Chesapeake Bay crab prepared by a Maryland native; Connecticut wine served by a Connecticut native; and dessert prepared by a Michigan native. Date to be mutually agreed upon. Valid during the summer 2015.

Donated by Fred & Marie Martin and Kathy Wilson

328

MET in HD at the Kate

VALUE: \$500

OPENING BID: \$200

MINIMUM BIDDING INCREMENT: \$50

Enjoy two subscriptions to the upcoming season of MET in HD. You can experience ten different New York City operas up close on the Kate's big screen, without leaving Connecticut.

Donated by The Katharine Hepburn Cultural Arts Center, Old Saybrook, CT

329

Foursome of Golf and a Scotty

Cameron Putter

VALUE: \$480

OPENING BID: \$200

MINIMUM BIDDING INCREMENT: \$50

Enjoy a foursome of golf with carts at the Newtown Country Club, a private club located in the center of Newtown, CT. The

course design follows the natural terrain and the small rolling greens provide players with a challenging nine-hole golf course. Valid Tuesday - Thursday, through May 2, 2015. While there you can try out your new Scotty Cameron Putter!

Donated by Paul's Pro-Shop, Shelton, CT

330

Moroccan Cooking Lesson

VALUE: \$480

OPENING BID: \$200

MINIMUM BIDDING INCREMENT: \$50

Learn the art of Moroccan cuisine with a cooking lesson at Tissa's Le Souk du Maroc restaurant in Old Saybrook. Owners Mohammed and Kathleen Benjdid will introduce you to a culture and cuisine that has inspired so many throughout Europe and the Mediterranean. For up to eight people, all ages. Also take home your own tagine (a special earthenware pot from the region). Valid Sunday evening–Wednesday evening, November 2014 through March 2015.

Donated by Tissa's Le Souk du Maroc, Old Saybrook, CT

331

Golf on the Gary Player Course at Lyman Orchards

VALUE: \$232

OPENING BID: \$100

MINIMUM BIDDING INCREMENT: \$50

Enjoy a foursome of golf with carts and a bucket of range balls for each player. The Player Course is sprinkled with deciduous trees and classic white pines. This course takes players through the apple orchards and offers ample elevation changes throughout the design. It rewards well-positioned drives and

accurate iron play with 34 bunkers protecting relatively small greens. On holes 11 and 13, golfers are treated to 360-degree views of southern Connecticut's picturesque landscape.

Donated by Lyman Orchards Golf Club, Middlefield, CT

332

U.S. Open Tennis Tickets

VALUE: \$300

OPENING BID: \$150

MINIMUM BIDDING INCREMENT: \$50

Two box seats to the 2015 U.S. Tennis Championships held at the Arthur Ashe Stadium in Flushing, NY. The U.S. Open is a sports and entertainment spectacle featuring world-class athletes and electrifying action. Day session, Thursday, September 3, 2015.

Donated by Mr. & Mrs. S.E. Canaday



Lot 332

333

Letterpress Workshop for One

VALUE: \$225

OPENING BID: \$100

MINIMUM BIDDING INCREMENT: \$50

Learn to print on a 120-year old letterpress. Spend two half-days with John Falstrom in his letterpress studio in Lyme, CT. Use beautiful

paper and learn the magic of this unique process. Expires September 27, 2015.

Donated by John Falstrom, Perennial Designs, Lyme, CT

334

Musical Masterworks

VALUE: \$300

OPENING BID: \$125

MINIMUM BIDDING INCREMENT: \$50

Two Saturday subscriptions to the 2014-2015 series of these acclaimed chamber music concerts. Now in its 24th season, Musical Masterworks presents five concerts at the acoustically and aesthetically remarkable First Congregational Church of Old Lyme. Concert dates are October 25 and December 6, 2014 and February 14, March 14, and May 2, 2015.

Donated by Musical Masterworks, Inc., Old Lyme, CT

335

A Mystic Adventure for Two

VALUE: \$383

OPENING BID: \$175

MINIMUM BIDDING INCREMENT: \$50

Experience a Mystic adventure for two with a one-night stay for two at the Steamboat Inn located in historic downtown Mystic and dinner at your choice of the Engine Room or Oyster Club. Also enjoy two adult tickets (valid through September 30, 2015) to the historic Mystic Seaport, where you can spend the day touring the Museum of America and the Sea.

Donated by Mr. & Mrs. Jeb Embree and Mystic Seaport, Mystic, CT

336

Essex Steam Train & Riverboat plus Dinner at The Old Lyme Inn

VALUE: \$294

OPENING BID: \$150

MINIMUM BIDDING INCREMENT: \$50

Relax with the rhythm of the rails as you meander through the Connecticut River Valley aboard vintage cars pulled by an authentic steam locomotive. Embark on a scenic Connecticut River cruise on the Becky Thatcher riverboat. Valid for two adults and two children. Then head over to the Old Lyme Inn to enjoy a delightful meal with a \$200 gift certificate. (Does not include tax, tip or alcohol.) Expires September 27, 2015.

Donated by Essex Steam Train & Riverboat, Essex, CT and Old Lyme Inn, Old Lyme, CT

337

New Haven Symphony Orchestra Tickets

VALUE: \$148

OPENING BID: \$75

MINIMUM BIDDING INCREMENT: \$25

Take in a performance of your choice at the New Haven Symphony Orchestra with two tickets valid during the 2014-2015 Classical Season Series. Concerts take place at 7:30pm at Woolsey Hall. For more than a century, the NHSO has been presenting classical repertoire and pops concerts regularly in New Haven as well as touring throughout Connecticut and beyond, including performances at Lincoln Center and Carnegie Hall. Not redeemable for cash and may not be credited toward a subscription purchase.

Donated by New Haven Symphony Orchestra, New Haven, CT

338

Dance Lessons

VALUE: \$249

OPENING BID: \$100

MINIMUM BIDDING INCREMENT: \$50

Put on your dancing shoes and get ready to cha-cha-cha! Gift certificate for two private lessons, two group lessons, and one studio party at Arthur Murray Dance Studios. Valid through March 28, 2014.

Donated by Arthur Murray Dance Studios, Niantic, CT

339

Tickets to *Arcadia* at Yale Repertory Theatre

VALUE: \$118

OPENING BID: \$50

MINIMUM BIDDING INCREMENT: \$25

Theatre goers can enjoy two tickets to *Arcadia*, by the Tony and Academy Award winning author Tom Stoppard and Artistic Director James Bundy. *Arcadia* is an achingly romantic and heartbreakingly funny waltz of the mind and the body, dancing across centuries. Valid for a Tuesday, Wednesday or Thursday evening performance October 3-25, 2014.

Donated by Yale Repertory Theatre, New Haven, CT

340

Chestnut Hill Concerts

VALUE: \$240

OPENING BID: \$100

MINIMUM BIDDING INCREMENT: \$50

Enjoy two subscriptions to the 2015 Concert Series. Chestnut Hill has been a world-class chamber music series on the Connecticut shoreline for over 40 years. The 2015 Series



Lot 340

will be held at the Katharine Hepburn Cultural Arts Center in Old Saybrook on August 7, 14, 21, and 28, 2015.

Donated by Chestnut Hill Concerts, Guilford, CT

341

Artisanal Cheese Tasting & Wine for 10 in Your Home

VALUE: \$360

OPENING BID: \$150

MINIMUM BIDDING INCREMENT: \$50

Enjoy an artisanal cheese tasting for ten, hosted by Paul Partica of The Cheese Shop of Centerbrook, along with a selection of wines donated by Seaside Wine & Spirits. To be held at the bidder's home at a mutually agreed upon time. Valid January 1, 2015 through October 1, 2015.

Donated by The Cheese Shop of Centerbrook, Centerbrook, CT and Seaside Wine & Spirits, Old Saybrook, CT

342

**Kids' Silk Screening Party and
Face & Body Art**

VALUE: \$275

OPENING BID: \$100

MINIMUM BIDDING INCREMENT: \$50

Give your children or grands a one-of-a-kind artistic experience with a silk screening party for four! Artist and framer Alicia Melluzzo is known for her fun, interactive birthday parties for children and teens, hosted in the studio space of her gallery in quaint downtown Deep River. All materials and hands-on instruction will be included, plus take home a fantastic T-shirt of your own creation! Date to be mutually agreed upon. Valid for one year. Plus enjoy a one-hour party coupon for your choice of face painting, glitter tattoos or henna for up to 10 guests in your home. Travel fee and gratuity not included. Date to be mutually agreed upon. Valid for one year.

Donated by The Studio of Alicia Melluzzo, Deep River, CT and "Z" Face & Body Art, Madison, CT

343

Cooking Class at Homeworks

VALUE: \$160

OPENING BID: \$75

MINIMUM BIDDING INCREMENT: \$25

Put on your apron and get ready to sharpen your cooking skills at Homeworks of Old Saybrook, the Shoreline's go-to source for outfitting the ultimate kitchen. The store's demonstration kitchen is home to classes led by some of the area's finest chefs. Enjoy a gift certificate for a cooking class for two, with the date to be mutually agreed upon. Includes wine, dinner, dessert and recipes to go!

Donated by Homeworks, Old Saybrook, CT

TRAVEL

LOTS 400-407

400

Fly Fishing Getaway for Four to Livingston, Montana

VALUE: UNIQUE!

OPENING BID: \$1,000

MINIMUM BIDDING INCREMENT: \$100

Spend a week in the heart of some of the country's best fly fishing. Use this two bedroom cabin in Livingston, Montana as your base to fly fish the Yellowstone River among others. Included is a guided day of fishing with Travis Smith, co-founder of Patagonia River Guides and a gift certificate for The Second Street Bistro, which was featured in Anthony Bourdain's TV episode on Big Sky Country. Valid from October 1, 2014 - September 30, 2015. Dates to be mutually agreed upon with owner and guide. You may select the river you would like to fish based on the time of year. The cabin has two bedrooms, one bathroom, a full kitchen, and living room. Airfare not included.

Donated by Lisa Rhodes



Lot 400

401

Tropical Escape for Two to Colombia

VALUE: UNIQUE!

OPENING BID: \$700

MINIMUM BIDDING INCREMENT: \$100

Enjoy four days and three nights at Capilla del Mar Hotel in Cartagena de Indias, Colombia, a privileged seafront location within the city's modern tourist area. It is a renovated, comfortable and unique accommodation facility that provides a warm and friendly experience, with all the comfort and hospitality of a five star hotel including: sea view rooms with balconies, a fitness center and spa, two restaurants, along with a solarium pool with panoramic views of the Caribbean Sea. Based upon availability and excludes all holidays and certain blackout periods. Meals and airfare not included. Valid through September 28, 2015.

Donated by Cynthia Miller-Aird



Lot 401

402

Overnight Stay & Spa Service at Foxwoods Resort Casino

VALUE: \$325

OPENING BID: \$150

MINIMUM BIDDING INCREMENT: \$50

Enjoy a Foxwoods Resort Casino getaway with deluxe overnight accommodations and your choice of spa service. Deluxe room based on availability. Valid Sunday through Thursday excluding holidays and/or holiday weekends. Expires September 27, 2015.

Donated by Foxwoods Resort Casino, Mashantucket, CT

403

Deluxe King Size Room & Dinner for 2 at Delamar Southport

VALUE: \$550

OPENING BID: \$250

MINIMUM BIDDING INCREMENT: \$50

Delamar Southport beckons you into a world of luxury in beautiful Southport, CT. Enjoy a one-night stay in one of their deluxe king size rooms. Once inside the lobby with its custom designed furnishings, antique marble floors, museum-quality art and French limestone hearth, the stage is set for an unforgettable CT escape. Stroll the tree-lined streets of historic Southport, take a break on the beach or visit a nearby gallery. Then enjoy dinner for two at their new restaurant Artisan featuring a refreshing spin on Classic New England Cuisine. Subject to availability. Valid through May 30, 2015.

Donated by Delamar Southport, Southport, CT



Lot 403

404

Cultural Getaway to New York City

VALUE: \$950

OPENING BID: \$400

MINIMUM BIDDING INCREMENT: \$100

Overnight stay for two in the Big Apple at the exclusive University Club, including dinner, Broadway theater tickets, and passes to MoMA. Date and choice of show to be mutually agreed upon. Must be used by September 30, 2015.

Donated by William Phillips & Barbara Smith

405

Maine Mansion Retreat

VALUE: \$225

OPENING BID: \$100

MINIMUM BIDDING INCREMENT: \$50

Get away to Kennebunkport, Maine for some much needed R & R! Gift certificate for a one-night stay, Sunday through Thursday, in a classic room at the historic Captain Lord Mansion, an intimate Maine coast inn and the subject of the Museum's painting by Willard Metcalf. Includes breakfast, afternoon tea, and a welcoming split of champagne. Valid

through May 15, 2015, excluding all holidays, special events & school vacation weeks. Excludes jacuzzi suites.

Donated by The Captain Lord Mansion, Kennebunkport, ME



Lot 405

406

Victorian B&B in the Heart of Saratoga Springs

VALUE: \$250

OPENING BID: \$100

MINIMUM BIDDING INCREMENT: \$50

Enjoy a hidden gem of the past with an overnight stay (Sunday through Thursday) at Union Gables Bed and Breakfast Mansion, located just a short walk into downtown Saratoga. A remarkable tribute to its era, the mansion offers relaxing ambiance with well-appointed amenities. Take in the beautiful gardens, wrap-around porch, and architectural splendor. Full breakfast included. Not valid during racing season. Valid through April 18, 2015.

Donated by Union Gables Bed & Breakfast Mansion, Saratoga Springs, NY



Lot 406

407

Relaxing Overnight Stay at Saybrook Point Inn

VALUE: \$325

OPENING BID: \$150

MINIMUM BIDDING INCREMENT: \$50

Unwind with a one-night deluxe accommodation at Saybrook Point Inn, located at the mouth of the Connecticut River. Includes breakfast for two at Fresh Salt. A perfect way to treat yourself or your next out-of-town guests. Valid through October 31, 2015. Subject to availability, excludes holidays and Saturdays. Tax, gratuity, and alcoholic beverages not included.

Donated by Saybrook Point Inn & Spa, Old Saybrook, CT



Lot 407

POTPOURRI

Lots 500-532

500

Enjoy Fly Rod Fishing Both In & Out of the Office

VALUE: \$890

OPENING BID: \$400

MINIMUM BIDDING INCREMENT: \$100

The diplomat series fly rod designed by March Brown Limited is able to negotiate the most challenging waters, maneuver gracefully through multilateral presentations and with swift resolution surface the most entrenched fish, allowing you to outshine peers repeatedly. Fly rod is 10'0" in length, 3 weight, 8 pieces with a carrying case. Also includes an exclusive 100% heavyweight silk March Brown necktie depicting largemouth bass stored in a cedar wooden box.

Donated by March Brown Ltd., Bristol, RI

501

Napa Valley Red Wine

VALUE: \$600

OPENING BID: \$250

MINIMUM BIDDING INCREMENT: \$50

Enjoy three bottles of Napa Valley Reserve Cabernet Sauvignon, one of each of the following vintages: 2006, 2009 and 2010. This wine cannot be purchased commercially and is made for members only of the Napa Valley Reserve, a wine country club established by legendary Napa winemaker, Bill Harlan of Harlan Estates. Grape cultivation



Lot 501

and winemaking all take place under the supervision of the Harlan Estates team. These wines are full-bodied with layers of intense dark berry flavors and will age beautifully and gracefully for at least two decades, but are also drinkable now. Decanting for at least two hours beforehand is recommended.

Donated by Sally & Larry Lawrence

502

Napa Valley Red Wine

VALUE: \$600

OPENING BID: \$250

MINIMUM BIDDING INCREMENT: \$50

Enjoy three bottles of Napa Valley Reserve Cabernet Sauvignon, one of each of the following vintages: 2006, 2009 and 2010. See above description for further information about this wine.

Donated by Sally & Larry Lawrence



Lot 503

503

Green Onyx & Marcasite Silver Pendant

VALUE: \$400

OPENING BID: \$150

MINIMUM BIDDING INCREMENT: \$50

Add this beautiful green onyx and marcasite sterling silver pendant to your collection. Designed by Judy Jack.

Donated by Angie's Jewelry & Gifts, Old Saybrook, CT

504

Timothy Pamment Salon Beauty Box

VALUE: \$350

OPENING BID: \$150

MINIMUM BIDDING INCREMENT: \$50

Enjoy this Timothy Pamment Beauty Box which includes a gift certificate for a Natura Bisse Vitamin C Facial and blowout with Melisa, a Kerastase gift set (shampoo, masque, styling), Shu Vemura Tasai cream, Kevyn Aucoin curling mascara, oube dry texturing spray and more!

Donated by Timothy Pamment Salon, Madison, CT



Lot 505

505

Amethyst and Sterling Silver Necklace

VALUE: \$200

OPENING BID: \$100

MINIMUM BIDDING INCREMENT: \$25

This amethyst and sterling silver pendant was designed and handcrafted to enhance the beauty and cut of the stone and is on an Italian sterling chain. Amethyst is believed to have healing properties and the power to focus energy. Created by the Museum's Assistant to the Director Donna Carlson. Donna specializes in creating custom pieces and one-of-a-kind designs.

Donated by Donna Carlson, The Glass Canvas

506

House Portrait

VALUE: \$500

OPENING BID: \$200

MINIMUM BIDDING INCREMENT: \$50

Have a watercolor rendering of your home by artist Jane M. White. Whether depicting

a cottage, house, or barn, Jane paints in a realistic style, beautifully capturing sun and shadows. With over 35 years experience in painting house portraits she is now an elected artist at the Essex Art Association and the Clinton Art Association. The finished portrait will be either 15 x 18 inches or 18 x 24 inches in size, unframed. Valid through September 2015.

Donated by Jane M. White

507

Salon Pure & Vitality Spa

VALUE: \$500

OPENING BID: \$200

MINIMUM BIDDING INCREMENT: \$50

It's time to pamper yourself with a spa escape right here in Old Lyme! Revitalize body and soul with Vitality Spa's signature facial, massage, and a spa pedicure. Plus, get a color, cut and style from one of Salon Pure's master stylists, and take home a Moroccan Oil gift bag full of their products.

Donated by Salon Pure, Old Lyme, CT and Vitality Spa & Wellness, Old Lyme, CT

508

Steampunk Necklace

VALUE: \$325

OPENING BID: \$150

MINIMUM BIDDING INCREMENT: \$50

The work of Steampunk jewelry designer Ann Pedro has been featured in over thirty gallery and museum exhibitions worldwide. Concentrating the last four years in the area of Steampunk design, she uses found objects, vintage pocketwatch and clock pieces, vintage



Lot 508

brass and copper, and resin to create her pieces. Be an individualist with this steampunk necklace made from vintage brass elements and vintage copper on a 20 inch brass chain. Signed and dated by the artist.

Donated by Ann Pedro

509

Limited Edition, Leather Bound, Autographed Copy of *American Impressionism* by William H. Gerdt's

VALUE: \$350

OPENING BID: \$150

MINIMUM BIDDING INCREMENT: \$50

Published in 1984 with a wealth of stunning illustrations, including 200 color plates, this is a limited edition, leather bound copy autographed by author William Gerdt's himself. A must have for any avid art collector.

Donated by Frank Racette, Antiquary

510

**Custom-designed Old Lyme
Gardener's Shirt**

VALUE: \$300

OPENING BID: \$150

MINIMUM BIDDING INCREMENT: \$50

Alan Horwitz has designed the perfect shirt for the gardener – it is made of very fine cotton in a light shade of ecru (so ticks will show readily!). The shirt features a high collar to protect one from the sun, large pockets for garden tools, and shoulder and sleeve pleats to move easily in. The shirt will be sized to the winning bidder's specifications.

Donated by Alan Horwitz, Well Suited, Stony Creek, CT

511

Southern Rhone Red Wine

VALUE: \$300

OPENING BID: \$150

MINIMUM BIDDING INCREMENT: \$50

Enjoy three bottles of 1998 Chateau Beaucastel Chateauneuf-du-Pape, which is full-bodied with rich dark fruit flavors. Organically and biodynamically farmed since



Lot 511

the 1950s, wines from this signature Southern Rhone estate, which dates back to the 16th century, uniquely include in each vintage all thirteen of the grape varietals permitted by the appellation, with the two largest components, Grenache and Mourvèdre, typically accounting for 60% of the total.

Donated by Sally & Larry Lawrence

512

Southern Rhone Red Wine

VALUE: \$300

OPENING BID: \$150

MINIMUM BIDDING INCREMENT: \$50

Enjoy three bottles of 2000 Chateau Beaucastel Chateauneuf-du-Pape, which is full-bodied with rich dark fruit flavors. See above description for further information about this wine.

Donated by Sally & Larry Lawrence

513

For Your Garden or Patio

VALUE: \$450

OPENING BID: \$200

MINIMUM BIDDING INCREMENT: \$50

Add this handsome granite stone planter full of succulents to your garden. Handcrafted this year by stone mason, Brant Amacher. Also add this vintage stone garden trough to your garden or patio.

Donated by Brant Amacher, Stone Mason, Moodus, CT and Philip & Robin Schonberger

514

Silver and Diamond Stud Earrings

VALUE: \$295

OPENING BID: \$125

MINIMUM BIDDING INCREMENT: \$50

Beautiful fine silver and diamond stud earrings perfect for everyday wear! Designed by Peter Indorf.

Donated by Peter Indorf Jewelers, Madison, CT



Lot 514

515

Butterfly Pattern Placemats & Napkins

VALUE: \$275

OPENING BID: \$100

MINIMUM BIDDING INCREMENT: \$50

Perfect for your next garden party. Indigo dyed, hand printed, limited edition Nankeen butterfly pattern reversible placemats and 21 inch napkins. Set of eight each. Machine washable.

Donated by Nankeen, Little Compton, RI

516

Rob Rivers Retreat

VALUE: \$233

OPENING BID: \$100

MINIMUM BIDDING INCREMENT: \$50

Be refreshed with “The Rivers Retreat”—the most requested spa package at Rob Rivers, The Salon and Spa in Old Lyme. You will be treated to their essential facial, a spa manicure and pedicure, and an aromatherapy scalp massage with shampoo and blow-dry. A perfect way to relax and feel beautiful. Allow three hours and 15 minutes.

Donated by Rob Rivers, The Salon and Spa, Old Lyme, CT

517

Pamper Your Pooch

VALUE: \$100

OPENING BID: \$50

MINIMUM BIDDING INCREMENT: \$25

Your dog will enjoy this crypton William Wegman doodle dog bed in persimmon. The artist Wegman’s signature dog doodle is a fun and fancy-free addition to your pup’s favorite perch. Machine washable and resists stains, odors, moisture and bacteria. Measures 27 x 36 x 5 inches.

Donated by Janie & Alix Stanley



Lot 517

518

Luxury Towels by Yves Delorme

VALUE: \$205

OPENING BID: \$100

MINIMUM BIDDING INCREMENT: \$50

Enjoy luxury towels by Yves Delorme, two each of the following: bath, hand and wash. Stop into Maggie's of Madison, a luxury linen and gift shop located in the charming town of Madison where you can hand pick the desired color to fit your decor.

Donated by Maggie's of Madison, Madison, CT



Lot 518

519

Indulge Yourself at Essence

VALUE: \$220

OPENING BID: \$100

MINIMUM BIDDING INCREMENT: \$50

Pamper yourself with a luxurious experience, an anti-aging facial with one of our trained specialists, a blowout and style with Jason and then a manicure and pedicure with Kate. Expires December 1, 2014.

Donated by Essence Center for Beauty & Wellness, Old Saybrook, CT

520

Hazy Summers Eve Necklace

VALUE: \$160

OPENING BID: \$75

MINIMUM BIDDING INCREMENT: \$25

Enjoy this two-strand necklace made of the following semi precious stones: blue lace agate, hematite and picture jasper. Handmade by local jewelry designer Juliet Rutigliano.

Donated by Juliet Rutigliano



Lot 520



Lot 521

521

Italian Ceramic Garden Urn

VALUE: \$229

OPENING BID: \$100

MINIMUM BIDDING INCREMENT: \$50

This Smith & Hawken Italian ceramic garden urn painted white with a blue floral band is designed for the garden or patio. 22 inches high with a 10 ¼ inch opening ideal for a flowering shrub or rose bush.

Donated by Mr. & Mrs. Rudolph F. Besier

522

Pair of Wrought Iron Planters

VALUE: \$350

OPENING BID: \$150

MINIMUM BIDDING INCREMENT: \$50

Pair of vintage black wrought iron planters for a stylish entryway. 22 ½ inches wide and 9 inches deep. Also includes two moss inserts and one planter contains a mixed medley of late summer color which attracts hummingbirds, butterflies and transitions well into the fall.

Donated by Mr. & Mrs. Rudolph F. Besier

Planting donated by Old Lyme Landscape Garden Center, Old Lyme, CT

523

Ann Lightfoot Necklace

VALUE: \$300

OPENING BID: \$125

MINIMUM BIDDING INCREMENT: \$50

Adorn yourself with this collier necklace of semi-precious stone and silk by local jewelry favorite Ann Lightfoot. Her handcrafted jewelry has been exhibited in art galleries and museums and can be found in fine stores from Los Angeles to London. Be the first to be seen in this stunning piece from her new fall collection!

Donated by the Ann Lightfoot

524

14K Yellow Gold & Sterling Silver Bracelet

VALUE: \$235

OPENING BID: \$100

MINIMUM BIDDING INCREMENT: \$50

Perfect for any occasion, add this 14K yellow gold and sterling silver bracelet to your collection. Bracelet is 8 inches in length.

Donated by Deep River Design, Deep River, CT



Lot 524

525

Designer Eyewear from Kennedy & Perkins and Gift Card from Kimberly Boutique

VALUE: \$165

OPENING BID: \$75

MINIMUM BIDDING INCREMENT: \$25

Kennedy & Perkins, Guild Opticians has been Connecticut's premier purveyor of designer glasses, sunglasses and reading glasses for over 60 years. Enjoy a \$100 gift card plus a designer case and cleaner. Plus enjoy a \$50 gift card to Kimberly Boutique where it can go toward a new outfit to go with your new shades.

Donated by Kennedy & Perkins, Guild Opticians, Old Saybrook, CT and Kimberly Boutique, Guilford, CT

526

Enjoy a Day of Luxury

VALUE: \$330

OPENING BID: \$150

MINIMUM BIDDING INCREMENT: \$50

Treat yourself to an organic Pumpkin Peel Facial at Bonne Sante Wellness. Tax and gratuity not included. Then shop 'till you drop with a gift certificate of \$200 to Old Lyme's emporium of fine jewelry, objets d'art, and Simon Pearce original designs in glass and pottery.

Donated by EF Watermelon, Old Lyme, CT and Bonne Sante, LLC, Old Lyme, CT

527

Be Kind to Steampunk!

VALUE: \$260

OPENING BID: \$125

MINIMUM BIDDING INCREMENT: \$50

Enjoy this basket of great Steampunk related books for all ages. Titles include: *Anatomy of Steampunk*, *Steampunk Lego*, *Steampunk H.G. Wells*, *Steampunk: An Illustrated History* and *Girl in the Steel Corset*. Also included are four Steampunk-inspired kindness bracelets made of beige linen cording and adorned with glass beads, silvertone buttons and charms. Each individually made in America by Grace Foxwell Murdock. Count acts of kindness by rolling a bead for each kind act given or received.

Donated by Micro Marketing, LLC, Old Lyme, CT and Grace Foxwell Murdock

528

Red Door Facial and Lunch at Shelter Harbor Inn

VALUE: \$180

OPENING BID: \$75

MINIMUM BIDDING INCREMENT: \$25

Treat yourself to a Red Door Signature Facial, the most requested treatment incorporating Miss Arden's classic facial massage technique. Using their professionally formulated Red Door Signature products expertly selected for your needs, radiance is beautifully awakened. Valid through December 31, 2015. Then enjoy a \$50 gift card to Shelter Harbor Inn in Westerly, Rhode Island.

Donated by Elizabeth Arden Red Door Spa, Mystic, CT and Anonymous Donor

529

Gourmet Gift Basket

VALUE: \$150

OPENING BID: \$75

MINIMUM BIDDING INCREMENT: \$25

Tempt your taste buds with this gift basket filled with non-perishables for the discerning palate. Ideal for your next dinner party or any special occasion.

Donated by Fromage Fine Foods & Coffees, LLC, Old Saybrook, CT

530

Gold Rush Dawn Redwood and Japanese Snowbell

VALUE: \$360

OPENING BID: \$150

MINIMUM BIDDING INCREMENT: \$50

Two beautiful specimens ideal for a woodland garden. *Metasequoia glyptostroboides*, commonly known as Gold Rush Dawn Redwood is a fast growing, pyramidal Conifer which has soft fern-like gold foliage that tends to not burn in full sun. In spring, the needles emerge nearly chartreuse yellow, keeping their coloring well into summer, then turning orange brown in fall before dropping. And *Styrax japonicus*, "Pink Chimes" Snowbell which is a shrubby, broad-topped, small tree or large shrub with wide spreading horizontal branches and small pendulous clusters of bell-shaped, mildly fragrant, pale pink long stalked flowers with yellow stamens. Both are winter interest trees. Wertheimer &

Associates will plant them for you within a twenty-five mile radius of the Museum. Date to be agreed upon.

Donated by Rick & Donna Carlson and Broken Arrow Nursery, Hamden, CT

Planting donated by Wertheimer & Associates, Old Lyme, CT

531

Designer Knitting Bag and Gift Card to Saybrook Yarn

VALUE: \$100

OPENING BID: \$50

MINIMUM BIDDING INCREMENT: \$25

A pretty washed roses Cath Kidston knitting bag which is long enough to hold needles and has enough space for wool or yarn. Includes a handy front zipper pocket and an inside mesh pocket to hold your scissors and knitting essentials. Made from laminated fabric which can easily be wiped clean. Also includes a \$25 gift card to Saybrook Yarn. This makes for a perfect gift or for your own knitting pleasures.

Donated by Emily Snow and Saybrook Yarn, Saybrook, CT

532

Exotic Houseplant from Ballek's

VALUE: \$75

OPENING BID: \$25

MINIMUM BIDDING INCREMENT: \$25

Take home this rare and exotic houseplant in a decorative pot. Makes for a great conversation piece at your next gathering or party.

Donated by Ballek's Garden Center, East Haddam, CT

PROBLEM SOLVERS & *magic makers*

We believe in the magic of The Florence Griswold Museum and are thrilled to bring them and you their new website.

— From the team at Julia Balfour

JULIA
BALFOUR
a multimedia creative company

call (860) 577 - 0340 • email info@juliabalfour.com
AN AWARD WINNING AGENCY IN LYME, CT • JULIABALFOUR.COM

RAISE YOUR BID

LOTS 600-700

Part of the magic of the Florence Griswold Museum is its breathtaking campus and vast array of specimen trees. This year's Raise Your Bid will provide financial support for tree planting and the on-going care and feeding of the Museum's mature and notable trees.

Following the Live Auction, Trustee Jeff Cooley will invite guests to support the Museum's Master Tree Plan and help to provide the planting and care of trees on this beloved historic site. By raising your bid paddle, you will be agreeing to donate \$100 (or more if you like) to this important "green" initiative. We hope you will participate—thank you for your support!

the-e-list

a free weekly email newsletter

about all good things on the Shoreline of Connecticut



We scour the Shoreline to find the best
restaurants, boutiques, art venues & happenings.

Go to the-e-list.com to sign up for your free guide to the shoreline



AJ Shea Construction LLC

192 Westbrook Road, Essex, CT 06426

Tel 860-767-2969

Fax 860-767-3222

www.ajshea.com

(860) 434-5333

KITCHINGS & POTTER, LLC

Counselors at Law

- ♪ Estate and tax planning
- ♪ Wills and trusts; charitable gifts
- ♪ Probate law; estate administration

**Suzanne D. Kitchings
Edward B. Potter**

**5-1 Davis Road, PO Box 187
Old Lyme, CT 06371**

Proud to support

Florence Griswold Museum

CharterOak.org

860-446-8085

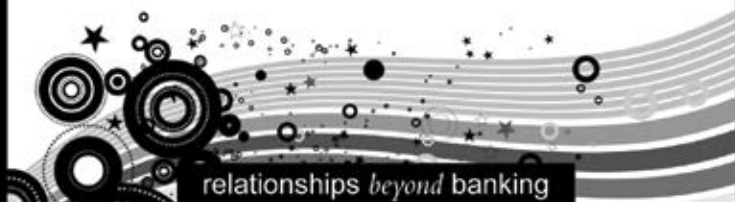
800-962-3237



Federally
Insured by
NCUA



CHARTER OAK
CREDIT UNION



relationships *beyond* banking

THE PERFECT NIGHT OUT



THE BEST LIVE
JAZZ IN CT

ENJOY OUR
"ALL THAT JAZZ" PACKAGE
TASTE • STAY • GROOVE!
CALL (860) 434-0886

thesidedoor

the Side Door Jazz Club at The Old Lyme Inn

85 Lyme St., Old Lyme, CT 06371 • www.thesidedoorjazz.com



ARCHAMBAULT INSURANCE, INC.

Personal &
Business Insurance

2 North Main Street
P.O. Box C
Chester, CT 06412-0362



(860) 526-9587

Fax: (860) 526-2412

www.central-insurance.com

www.archambaultinsurance.com

Established in 1979, Winter Associates, Inc. is a regional leader in personal property appraisal and liquidation.

Trusted appraisers for insurance, financial planning, and estate settlement purposes, we also offer auction services ranging from the sale of a single item to leaving a home “broom clean.”

Give us a call. You’ll get professional advice and service and the peace of mind knowing you don’t have to do it all yourself.

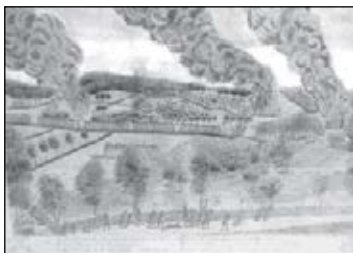
Winter Associates

Auctioneers & Appraisers

21 Cooke Street • Plainville, CT 06062

860-793-0288

www.AuctionsAppraisers.com



*Amos Doolittle Rev. War Engravings,
Sold for \$471,500*

Classic chords,
EXCEPTIONAL HARMONIES.

Enjoying the arts adds vitality to our lives!

More life-enriching qualities are included
in our *HealthyLife™ Services* program.

Ask Sara or Brenda about the art of living
at Chester Village West by calling

(860) 526-6800.



 A Life Care Services Community™

317 West Main Street • Chester, CT 06412

(860) 526-6800

www.ChesterVillageWestLCS.com



LYME ART ASSOCIATION



Founded in 1914 by the Lyme Impressionists, our historic building features two floors of representational fine art for sale. Our paintings make memorable gifts, and our elegant sky-lit galleries can be rented for your next special event!

Free Admission & Open Year-round: Monday - Saturday, 10am - 5pm; Sunday, 1 - 5pm
90 Lyme Street - Old Lyme, Connecticut - (860) 434-7802 - www.LymeArtAssociation.org

Providing legal services to our clients throughout Connecticut since 1845.

Robinson+Cole

ATTORNEYS AT LAW

Contact:

Linda J. McDowell | 860.275.8313

Robinson & Cole LLP

GUY'S OIL SERVICE STATION INC.

- Fuel • Kerosene • Diesel
- Automatic Delivery
- Budget Plans/Discounts
- Pre-Pay Program
- 24 Hour Service
- Service Contracts
- Boiler & Furnace Installations
- Oil Tank Removal



LIC# B3 305555

"WHERE SERVICE IS FIRST"

860.739.8700

*Serving Southeastern Connecticut Since 1939
A Family Owned & Operated Business*



www.guysoil.com

Everything for your Locally Grown Holiday!

Home-made
Old Fashioned
Cider Doughnuts

Create a Holiday
Tradition with a Local,
Farm-Fresh
Ekonk Hill Turkey!

Pies,
Homemade
Ice Cream,
Artisan Breads,
Farmstead
Cheeses,
Apple Cider,
Local Honey,
Maple Syrup,
Fall Produce

Ekonk Hill Turkey Farm

Reserve
Your
Fresh Turkey
Today

Where Tasting is Believing, Guaranteed!

227 Ekonk Hill Rd in Sterling, CT Call to order: 860.564.0248

“An excellent choice in delightful Chester, [with]
fabulous daily menus of innovative New American
dishes made with the freshest ingredients, almost
all locally grown...” -Zagat



**RIVER
TAVERN**

RiverTavernRestaurant.com
860.526.9417



**FLANDERS
FISH**
**MARKET &
RESTAURANT**

Private Parties ★ Cappy's Bar
Demonstration Kitchen ★ Dances
Cooking Classes ★ Family Restaurant
Fresh Fish Market ★ Outdoor Dining
Catering ★ & More

FlandersFish.com

22 Chesterfield Rd, East Lyme CT 06333 860-739-8866



ZELEK ELECTRIC CO.
187A Boston Post Rd.
Po Box 897
Old Lyme, CT 06371-0897

- Solar Installations
- Bucket Truck Available
- Electrical Upgrades
- Generators Sales and Installation
- Home or Business wiring
- Lightning Protection
- Residential, Commercial and Industrial Wiring
- Family Owned and Operated
- All phases of electrical wiring

BIG enough to get the job done; SMALL enough to care!

Office 860.434.9726 Fax 860.434.1525

A Great Place to Make New Memories

Gabrielle's

MONDAY
Half Price Entrees

TUESDAY
*Half Price Wine
by the Bottle*

WEDNESDAY
*Half Price
Cocktails and
Glasses of Wine
for Ladies!*

860.767.2440

OpenTable

Mon-Sat 11:30-2:30pm Mon-Sun 5-11 Close Sunday Brunch 11-3pm

Gabrielle's 78 Main St. Centerbrook, CT www.gabrielles.net



FLORENCE GRISWOLD MUSEUM

and

Two Sisters Design

It's more than just magic.

Lisa Reneson • twosistersdesign.com

(860) 739-5032

(860) 739-8917

P-1 200447

S-1 300568

E-9 105292

*Niantic Plumbing
& Appliance Co., Inc.*

40 PENNSYLVANIA AVENUE
NIANTIC, CONNECTICUT 06357

ROBERT CUTILLO
Vice President

JOHN CUTILLO
President

SECOR AUTO GROUP

Broad Street • New London, CT Tel: 860-442-3232



CHRYSLER



SUBARU



DODGE



Jeep



MITSUBISHI
MOTORS



RAM



Visit us at: www.secorauto.com

ANDREW RUBENOFF : DESIGN

38 SPERRY STREET NEW HAVEN, CT 06511 (203) 562-0001
ANDREWRUBENOFF.COM

Saybrook CATERING Co.

Passionate food for passionate events.

SOCIAL EVENTS

WEDDINGS

CORPORATE EVENTS



Executive Chef David Saunders makes it his mission to provide extraordinary quality cuisine with a wide array of options to satisfy every palate and event.

Call (860) 819-1805 or visit www.SaybrookCatering.com

745 Boston Post Road, Old Saybrook, CT 06475

AN OCCASSION *to celebrate*

We are your one stop rental shop, We have all you need for your summer parties and weddings. Give us a call or stop into our showroom today!

Contact us: 800.649.2055
chasecanopy.com
info@chasecanopy.com




CHASE CANOPY
LUXURY TENTS | EVENT RENTALS



HANNAH CHILDS INTERIOR DESIGN



2 Huntley Road, Old Lyme, CT 06371
hannahchildsinteriors.com
inquiries@hannahchildsinteriors.com
860.405.4394

INDEX

DONORS ITEM NO.

ABBY M. TAYLOR FINE ART, LLC	104
BRANT AMACHER, STONE MASON	513
ANGIE'S JEWELRY & GIFTS	503
ANONYMOUS DONOR	215, 528
ARTHUR MURRAY DANCE STUDIOS	338
BALLEK'S GARDEN CENTER	532
ROBERT BARBEAU, GOLF PRO, OLD LYME COUNTRY CLUB.	320
STEPHEN & SUSAN BATES	127
KATIE BEECHER	112
MR. & MRS. RUDOLPH F. BESIER . 202, 209, 212, 521, 522	
BILLIE BEADS	210
BLACK WHALE ANTIQUES	124
BONNE SANTE, LLC	526
BONSAL-DOUGLAS ANTIQUES	203
BROKEN ARROW NURSERY	530
MR. & MRS. S.E. CANADAY	332
THE CAPTAIN LORD MANSION	405
DONNA CARLSON, THE GLASS CANVAS	505
RICK & DONNA CARLSON	530
T.A. CHARRON	123
THE CHEESE SHOP OF CENTERBROOK	341
CHESTNUT HILL CONCERTS	340
CHRISTIE'S INC.	301
MR. & MRS. ROBERT CZEPIEL	120
DEEP RIVER DESIGN	524
DELAMAR SOUTHPORT	403
DORADO BEACH, A RITZ-CARLTON RESERVE	4
EVELYN SACZAWA DUBIEL	111
DAVID DUNLOP	118
EASTERN CONNECTICUT SYMPHONY ORCHESTRA	332
EF WATERMELON	526
ELIZABETH ARDEN RED DOOR SPA	528

MR. & MRS. JEB EMBREE	335
ESSENCE CENTER FOR BEAUTY & WELLNESS	519
ESSEX STEAM TRAIN & RIVERBOAT	336
JOHN FALSTROM, PERENNIAL DESIGNS	333
CHARLES B. FERGUSON	121
RALF FEYL	106
FOXWOODS RESORT CASINO	402
DAVID & ELIZABETH FRANKEL	306
FRANKEL GREEN THEATRICAL MANAGEMENT	322
FRESH AYER GALLERY	122
JUDY FRIDAY	110
FROMAGE FINE FOODS & COFFEES, LLC	529
SANDY GARVIN	102
EILEEN GILLESPIE	125
GOURMET GALLEY CATERING	305
ALVA GREENBERG	114
HANNAH CHILDS INTERIOR DESIGN	208
MUNDY HEPBURN	204
HILL-STEAD MUSEUM	319
HOMEWORKS	343
ALAN HORWITZ, WELL SUITED	510
INTERNATIONAL BICYCLE TOURS INC.	2
BARBARA KACICEK	103
THE KATHARINE HEPBURN CULTURAL ARTS CENTER	328
KENNEDY & PERKINS, GUILD OPTICIANS.	525
KIMBERLY BOUTIQUE	525
KIRTLAND H. CRUMP, LLC	205
JAMES & HEDY KORST	117, 211
SALLY & LARRY LAWRENCE . 317, 501, 502, 511, 512	
ANN LIGHTFOOT	523
JULIE LYMAN	213
LYMAN ORCHARDS GOLF CLUB	331
MAGGIE'S OF MADISON	518
MARCH BROWN LTD..	500

INDEX

FRED & MARIE MARTIN	327	RUTH HENDEL PRODUCTIONS.	325
MARIE MARTIN	210	JULIET RUTIGLIANO	520
MAUREEN McCABE	100	SALON PURE	507
MICRO MARKETING, LLC.	527	SAYBROOK POINT INN & SPA	407
CYNTHIA MILLER-AIRD	401	SAYBROOK YARN.	531
MOHEGAN SUN	332	PHILIP & ROBIN SCHONBERGER	513
ROY & DEBORAH MOORE	307-316	SHANNON'S FINE ART AUCTIONEERS	126
GRACE FOXWELL MURDOCK	527	DONALD & CAROL SCHWARTZ	214
MUSICAL MASTERWORKS, INC..	334	SEASIDE WINE & SPIRITS	341
MYSTIC SEAPORT.	335	KATHERINE SIMMONS	108
NEW HAVEN SYMPHONY ORCHESTRA	337	PATRICIA H. SMITH	206
NANKEEN	515	EMILY SNOW	531
THE NEW YORK CITY BALLET.	317	ANITA SOOS	107
OCEAN HOUSE	302	SUSAN & ROBERT STAAB	318
OLD BEAUTIFUL ANTIQUES & ART	128	JANIE & ALIX STANLEY	517
OLD LYME INN	33	STONINGTON COUNTRY CLUB	324
OLD LYME LANDSCAPE GARDEN CENTER	522	THE STUDIO OF ALICIA MELLUZZO	342
OVERLAND EXPERTS, LLC.	3	MICHAEL THEISE	115
ELISABETH PALATIello, BUT A DREAM CUSTOM CAKES	326	TIMOTHY PAMMENT SALON	504
PAUL'S PRO-SHOP.	329	TISSA'S LE SOUK DU MAROC	330
ANN PEDRO	508	UNION GABLES BED & BREAKFAST MANSION	406
PETER EMANUEL/JANE MARTINEAU DUO	326	VITALITY SPA & WELLNESS.	507
PETER INDORF JEWELERS.	514	LORI WARNER	113
THE PHILIP JOHNSON GLASS HOUSE	306	WEEKAPAUg INN.	303
WILLIAM PHILLIPS & BARBARA SMITH	404	WERTHEIMER & ASSOCIATES	530
POUGH INTERIORS, LLC	201	JANE M. WHITE	506
BARBARA & DAVID PRESTON	105	NELSON H. WHITE	101
MR. & MRS. JOHN PRITCHARD	119	ROBERT & TRICIA WILBER	300, 304
THE PUBLIC THEATER	323	WILLIAM KENT CHARITABLE FOUNDATION	116
FRANK RACETTE, ANTIQUARY	509	KATHY WILSON	327
DAVID D.J. RAU	200	YALE REPERTORY THEATRE	339
LISA RHODES	400	GEORGE M. YEAGER	1
ROB RIVERS, THE SALON & SPA	516	"Z" FACE & BODY ART	342
JANINE ROBERTSON	109		

*Proudly Supporting the Arts
The Florence Griswold Museum's
32nd Annual Benefit Auction*



BOUVIER
I N S U R A N C E

CHAMPION

West Hartford
East Haddam
Old Lyme & Uncasville
www.binsurance.com
P: 860-232-4491
In State: 800-357-2000

Protecting your business is ***our*** business