



FLORENCE GRISWOLD MUSEUM *Ledger*

Annual Report Issue

SUMMER • 2016

A Special Invitation to Florence Griswold Museum Members

Please join us for the 70th Annual Meeting and the Members' Reception for the Opening of *The Artist's Garden: American Impressionism and the Garden Movement, 1887-1920*.

Friday, June 3, 2016 at 5:30pm
Florence Griswold Museum
96 Lyme Street
Old Lyme, Connecticut

The 70th Annual Meeting of the Florence Griswold Museum takes place on Friday, June 3, 2016 at 5:30pm under a tent on the Adrian P. Moore Garden Terrace. We will share brief reports on the activities of the Museum and invite members to elect a new slate of officers and trustees.

Members and guests are invited to preview the newly acquired parcel of riverfront property and celebrate unifying this historic estate for the first time since Miss Florence's death in 1937.

Afterwards, we'll enjoy a festive reception for the opening of *The Artist's Garden: American Impressionism and the Garden Movement*. This is your invitation to the Members' Reception. We hope you can join us. Kindly RSVP (acceptances only) to 860-434-5542 ext. 122 or DeeDee@flogris.org.



Maurice B. Prendergast, *Promenade*, c. 1915-18.
Pennsylvania Academy of the Fine Arts

The Artist's Garden—a New Exhibition

Organized by the Pennsylvania Academy of the Fine Arts, *The Artist's Garden: American Impressionism and the Garden Movement, 1887-1920* is the first exhibition to situate discussions of the growth of the Garden Movement and American Impressionism within the politics of the Progressive Era—a period known for both a surge in nationalism and growing anxieties about immigration, urbanization, and women's suffrage. From June 3 through September 29, paintings, sculpture, and stained glass blend with prints, books, and photographs to explore how art, literature, and social theory



Violet Oakley, *June*, c. 1902. Pennsylvania Academy of the Fine Arts

played an important role in American culture during the transformative period of 1887-1920. Works by Childe Hassam, John H. Twachtman, J. Alden Weir, Cecilia Beaux, and Maurice B. Prendergast, among others, illuminate the historical context behind these garden paintings and inspire relevant discussions for the 21st century. See page 4 for details on GardenFest, a seasonal event which also begins June 3. The Museum's historic gardens and landscape are the perfect backdrop for this exhibition. This exhibition is generously supported by a grant from Connecticut Humanities.

Collection Spotlight: Dining Room Table

FLORENCE GRISWOLD'S

many debts necessitated the sale of her possessions at auction in 1938, the year after her death. But a recent gift to the collection reveals that Miss Florence's precarious finances prompted her to liquidate family heirlooms in her lifetime, and has brought one of those items—a table—"home" for the first time since 1932. Writing to Nella G. O'Brien, a teacher from West Hartford, who purchased the table with her daughter Julia as a wedding gift for Nella's son and daughter-in-law J. Cyril O'Brien and Esther Cullen O'Brien, Miss Florence explained that the table had been her parents' when they "began housekeeping" after marrying in 1840. The table, made of mahogany, may even have been in the Griswold family earlier than 1840. Dated circa 1810–1825, the table was probably



The table, a gift of John C. and Joan F. O'Brien, is a handsome addition to the current exhibition, *Ten/Forty*, on view through May 29.

made in New York, where Florence's father Captain Robert H. Griswold and his brothers often traveled as part of their work as ship captains. Included with Miss

Florence's letter to Mrs. O'Brien was a label with a price of \$785 that she must have displayed on the table for prospective buyers perusing the antiques and artworks for sale in the front hall of her house. Although it was difficult for Miss Florence to part with family heirlooms, she did her best to make sure such pieces ended up in sympathetic homes and even attempted to place other antiques in public collections such as the Yale University Art Gallery and the Brooklyn Museum.

While this table has remained in the O'Brien family in Connecticut during its years away from the Griswold house, other furnishings have made their way back to the Museum from as far away as the Pacific Northwest. We continue to search for Miss Florence's lost possessions and appreciate any leads!

2

Yale Kneeland Object Conservation Fund: A Curatorial Perspective

CONSERVATION IS PART

of the regular care and preservation of the Museum's collections, which are in trust here for visitors today and for future generations. We assess and monitor the condition of artworks, and when we place them on view, we aim for them not only to look their best, but also to be in the strongest possible condition. In preparation for the exhibition *Ten/Forty: Collecting American Art at the Florence Griswold Museum*, we sought the help of furniture conservators Fallon & Wilkinson and objects conservator Susan Holbrook to treat two recent additions to the collection, a mahogany drop-leaf table once owned by Florence Griswold and *A Chance Acquaintance*,

a plaster sculpture by Bessie Potter Vonnoh, as well as a bust of George Griswold by John Frazee. These treatments marked the first uses of the Yale Kneeland Object Conservation Fund, which was also tapped to carry out conservation on *The Sprinter*, a 1902 plaster sculpture by R. Tait McKenzie that is on view in the parlor of the Florence Griswold House.

The fund was created in 2014 in honor of our late trustee Yale Kneeland, who was for many years an objects conservator at The Metropolitan Museum of Art, and has grown through the contributions of his friends and the Museum's supporters. The Kneeland Fund provides resources to better care for the three-dimensional objects in

our collection, including frames. As this restricted fund grows through your continued support, we will be able to conserve and study additional objects from the collection.



The bust of George Griswold by John Frazee was among the first objects treated thanks to the Yale Kneeland Object Conservation Fund.

FGM Appoints New Assistant Curator

AFTER A NATIONAL SEARCH, the Museum has selected Jennifer Stettler Parsons, Ph.D., as its new Assistant Curator. Jenny begins her duties on May 25, following her graduation from the doctoral program at the University of Virginia, where she wrote her dissertation, “John Sloan: Between Philadelphia and New York, 1892–1907.” An expert on nineteenth and twentieth-century American art, Jenny brings to the Museum an understanding of artists’ communities like the tightly-knit circle of Ashcan School artists of which Sloan was a part. A native of the Philadelphia area, Parsons developed an interest in curatorial work through past positions at the Philadelphia Museum of Art, and in Washington, D.C., at the National Gallery of Art, the Phillips Collection, and the Smithsonian American Art Museum, where she has been the Sara Roby Predoctoral Fellowship in Twentieth-Century American Realism since 2014.

Jenny looks forward to exploring the international context of American Impressionism, in keeping with recent scholarly trends toward examining the connections and resonances between Impressionism’s practitioners across the globe. She also plans to turn her attention to the subject of artist-naturalists, and to delve into iconic examples from the Hartford Steam Boiler Collection, such as Frederic E. Church’s *The Charter Oak at Hartford*, ca. 1846.



Jenny, her husband Tim, and their cat will make their home at the Museum’s Oscar Fehrer House in Lyme.

Community Leaders Unite to Oppose High Speed Rail Alternative One

THE FLORENCE GRISWOLD MUSEUM is working closely with a group of community and state leaders to vigorously oppose the potentially devastating effects of a proposal by the Federal Rail Administration (FRA) to construct an entirely new 50-mile high-speed rail corridor between Old Saybrook, CT to Kenyon, Rhode Island as part of a long-term effort to improve the speed of rail service between Washington, D.C. and Boston. If approved, Alternative 1, which is the least expensive of three alternatives, would build a new railroad bridge across the Connecticut River and then come up diagonally to meet up where the Lyme Street overpass is located. The map shows how the new track would go right through the heart of the Old Lyme Historic District, cutting a wide swath through the middle of Old Lyme with an industrial corridor that would destroy the town’s natural beauty and its historic assets forever.

Thanks to the leadership of First Selectwoman Bonnie Reemsnyder and the grass roots work of many organizations throughout this region, our voices are being heard. But this is an issue that will require everyone’s vigilance in the months ahead of a decision by the FRA at the end of the summer. A group of local concerned citizens are partnering with leaders at the Connecticut Trust for Historic Preservation (see related column by their executive director on page 6) to present a **new website** at www.secoast.org that is devoted to keeping us informed on developments that might impact Old Lyme and the Connecticut shoreline. The Museum is committed to doing everything in its power to defeat this alarming proposal. Your input and help is needed.



GARDENFEST

A Celebration of the Gardens at the Museum

June 3 to 12, 2016

THIS ANNUAL EVENT is filled with an exciting array of garden-related activities scheduled. Please check FlorenceGriswoldMuseum.org for a complete list.

Friday, June 10 through Sunday, June 12

Flower Show: Blooms with a View:

A Display of Art & Flowers

Enjoy stunning flower arrangements by 15 floral artists interpreting works of art in the exhibition *The Artist's Garden*. Playing off colors, lines, shapes, and subject matter, each display reflects its inspiration in masterful ways. Included with Museum admission.



Lunch and Book Talk:

9th Annual Garden Luncheon and Rescuing Eden

Friday, June 10 at noon



Members and guests are cordially invited to a day of art, music, flowers, and food! Luncheon guests gather for refreshments and music by The Tangerine Trio on the lawn overlooking the Lieutenant River.

Seated under a festive tent on the Adrian P. Moore Garden Terrace, guests enjoy lunch catered by Gourmet Galley followed by remarks by design historian and biographer Caroline Seeborn and landscape photographer Curtice Taylor, whose new publication *Rescuing Eden: Preserving America's Historic Gardens* is a perfect complement to the current exhibition, *The Artist's Garden*.

Rescuing Eden celebrates the landscapes that serve as living, flourishing pleasure grounds for botanists, horticulturalists, and nature lovers throughout the country. The thirty gardens (including the Florence Griswold gardens!) were selected for the drama of their original creation and rescue and for their historical and horticultural importance.

The Garden Luncheon, sponsored by Wilber & King and Centerbrook Architects and Planners with media sponsor Connecticut Cottages and Gardens, supports the stewardship and preservation of the Museum's historic gardens and riverside landscape.

Tickets for this popular event are \$125. For reservations please go to FlorenceGriswoldMuseum.org or contact DeeDee at 860-434-5542 ext. 122 or DeeDee@flogris.org.

Garden luncheon attendees may pre-order a copy of *Rescuing Eden* for \$37.50 (a savings of 25%). All pre-paid orders will be ready for you to pick up at the Luncheon. Day-of pricing for *Rescuing Eden*, \$50.00 (members \$45.00).



The Florence Griswold Museum garden photographed by Curtice Taylor. Taylor is a well-known landscape photographer who teaches at the School of Visual Arts in New York.

Museum Partners with Opus You to Transmit Live Educational Programs into New York City Classrooms

OPUS YOU FOUNDER and Artistic Director Scott Ellaway is streaming live music education programs from the Museum's galleries into New York public schools. Opus You is an online educational resource that emphasizes the unique opportunity for young audiences to hear music performed by professional musicians and explained for them by Ellaway. After visiting the current exhibition *Ten/Forty*, the innovative Welsh-born conductor envisioned a new series of musical lessons that could be presented in real time, tapping the power of the internet, that explores ideas represented in the Museum's paintings paired with live



performances of music expressing common themes. The first session in April emphasized the Boundaries of Classical Modernism, Everyday Life, Geometry, and Spring with images by Peter Halley, Harry Holtzman, Miriam Anne Barer, and Willard Metcalf. The recent second session focused on the Brass Band and Urban and Rural Settings and feature the work of Gertrude Nason, Martin Lewis, and Louis Paul Dessar. The third session will be streamed live from London in mid-June and focus on American Impressionism, Sea, and Water with the work of Edward Rook, Harriet Whitney Frishmuth, and Samuel Walters. Deeply committed to music education, Scott Ellaway made his conducting debut at the age of twenty-one while still an undergraduate at Oxford, and is also the founder of the prestigious orchestral academy, Orchestra Europa. He has conducted widely in both Europe and America, and was named by BBC Music Magazine as one of the UK's Top Ten Emerging Talents. Our thanks to Vice President David Dangremond for introducing Ellaway to the Museum.



Jack always counseled the Museum to look ahead with vision and foresight and for that we are deeply grateful.

John C. Evans

THE MUSEUM recently lost a good friend and longtime honorary trustee John C. (Jack) Evans. Jack was instrumental in helping the Museum to earn the support of the Henry Luce Foundation where he served as treasurer and head of their finance committee. His dedication and support of arts and culture was impressive, serving as a trustee of Connecticut College, High Hopes, the Dia Art Foundation and the National Theatre of the Deaf. The Museum houses the *John C. Evans American Art Library Collection*, a fitting reminder of his appreciation of the arts.

5

Garden Party for Young Patrons

YOUNG PATRONS between the ages of 21-39 are invited to join us on **Friday, June 24** from 5:30 to 7:30 for a festive Garden Party in the Rafal Landscape Center, a historic 19th century barn in the heart of the Museum's landscape.

Enjoy light hors d'oeuvres and cocktails while listening to live music and trying your hand at a game of croquet amongst the Museum's

lovingly-restored "old-fashioned" gardens, in view of the picturesque Lieutenant River!

Guests will also enjoy viewing the exhibition, *The Artist's Garden*.

Bring your friends and meet new ones! Tickets are \$15 in advance (until June 23) or \$25 at the door. Casual garden party attire recommended. For more information, please contact DeeDee at (860) 434-5542 x122.



Last summer's party was a hit for the 21 to 39 crowd.

ANOTHER VOICE

NEW INSIGHTS FROM GUEST AUTHORS

Citizen Advocacy Essential to Protecting Town

By Daniel Mackay, Executive Director, Connecticut Trust for Historic Preservation

NINE MONTHS NEW TO Connecticut, the state's remarkable art institutions have been primary destinations

as my wife and I explore our new home state. My introduction to the Florence Griswold Museum coincided with the last weekend of the intriguing Connecticut Landscapes exhibit in late January.

The diversity of that retrospective was impressive and the collaboration between participating institutions a telling sign of the strong art partnerships in the Nutmeg State.

Of equal delight was the exhibit's many overlaps with recent historic resource survey work conducted by the Connecticut Trust. Our Creative Places survey researched and recorded the homes, studios and inspirational landscapes of 20th century Arts and Letters in Connecticut.

The state's industrial landscapes, also represented in the exhibit, are the focus of Making Places, work by the Trust to reposition historic mills for reuse and reinvestment in the modern Connecticut economy.

But it was neither arts nor letters nor mills which immediately called me back to Old Lyme. Instead, it was the stunning realization that one of Connecticut's most intact historic coastal communities, one of New England's most intact estuaries, and the landscape and setting at the center of American Impressionism was at risk from the industrial-scale intrusions of a dedicated route for high-speed train service. FRA's mapping put their new tracks right through the Lyme Academy.

Jeff Andersen's column on page 3 provides the essential background and details the the potential impact of this proposal. The community, institutional, and local government response to the audacious plan was swift, loud, and voluminous - a great start to the advocacy needed to protect Old Lyme. To see a cultural institution like the Florence Griswold Museum step immediately into a leadership position is welcome and necessary.

In response, the Federal Rail Administration now states they will replace plans for an aerial rail bridge across the river and through Old Lyme's historic district with a tunnel that will burrow underneath and past Old Lyme to get high speed rail service into Interstate 95's right-of-way.

The federal planning process now goes quiet until fall 2016 as coastal Connecticut waits to see if the tunnel proposal is grafted onto the the FRA's coastal route proposal and if this route is chosen for new high-speed rail lines. If FRA proceeds with a coastal bypass, will engineering studies prove that a tunnel at Old Lyme is both feasible and affordable? Does a tunnel option shift the community impacts from visual intrusions to a wider range of environmental effects?

To assure the best outcome for Old Lyme, there's little point in waiting for process and politics to deliver best results. A local research and advocacy group has formed, and SECoast needs your financial support to cover costs of staffing and outreach on this issue. Adopted as a special project of the Connecticut Trust for Historic Preservation, contributions to SECoast are tax deductible: <http://secoast.org/donate/>.

SECoast is proving itself diligent, thoughtful and creative in its early weeks and they will be central in efforts to protect

Old Lyme, but their advocacy and research needs our support to continue to be effective in Connecticut and Washington D.C. While their website is under development, you can most easily follow SECoast's work via their Facebook page.

It would be easy to accept the FRA's tunnel concession as the end of the line, to dismiss the whole rail plan as too expensive to ever implement, and to label Old Lyme's cultural resources as too important to suffer the industrial intrusions of new national transportation infrastructure. But to do so would be a mistake; only sustained citizen

action will protect the community and estuary from the audacious new train route mapped through Old Lyme and the Connecticut River estuary.

This issue can and needs to be won. The time to win it is now, in this early stage of federal planning. Join us in this work. There's room for your involvement, ideas and creativity. You'll find a nascent but committed partnership of citizens, cultural institutions and historic and environmental organizations working to protect the remarkable community and context that is Old Lyme and the seacoast region.

Mackay comes to the Connecticut Trust from New York and fifteen years leading policy work in the preservation field on a variety of legislative and environmental siting issues, including commercial scale wind energy, hydro-fracking and transmission line development impacts on historic and cultural resources.



Artist and activist Robin Breeding has been combining impressionistic images of the picturesque Old Lyme landscape with jarring images of high speed rail for SECoast to invigorate community involvement in this project.

Fall Outdoor Event to Feature the World of Faeries, Literally



Grab your *Time Traveler's Guide to the Faerie World* and travel through time and space to visit magical faerie realms around the globe. This fall, the Museum presents its 8th outdoor creative event with *A Flutter in Time: Faeries Around the World and Across the Ages*. Visitors young and old investigate how faeries created miniature homes inspired by the great wonders of the

world, from prehistoric caverns, ancient temples, and lofty pyramids to exotic huts, medieval cottages, and Victorian palaces—all fashioned with an emphasis on natural materials. *A Flutter in Time* will feature nearly thirty faerie-scaled sites on the Museum's campus that conjure the history of faerie-kind around the world in a fun and imaginative way. This year's creative roster includes many artists who have participated in the past, including the students of Deep River Elementary, and the Nathan Hale Arts Magnet School in New London, as well as a few new creative folk, including students from ISSAC School (Interdistrict School for Arts and Communication) in New London. The month-long (October 1-30) experience

will be enhanced with fun and informative programming.



Help Us Reach 3,000 Members

We need your help! Think of what you love about the Museum, whether it's the high-quality exhibitions, exciting programming for all ages, rich history, or beautiful landscape, then share those reasons with your family, friends and associates and invite them to become a member. With your help we can surpass our goal and welcome many new faces to our ever-growing family of members!

To view the many benefits of membership and to sign up online, go to FlorenceGriswoldMuseum.org and click the Support tab. If you wish further information or membership materials please contact, Nathaniel Greene, Membership Coordinator, 860-434-5542 x112 or Nathaniel@flogris.org.

P. S. Thank you to our dedicated and loyal family of members for helping us to consistently maintain an 85% membership renewal rate, a rate that far surpasses the national average!



Share the Museum with family and friends – invite them to become members!



Ellie Revill Honored

HONORARY TRUSTEE Eleanor Del Mar Revill (b. 1921), seated at the dining table in the Florence Griswold House, was recently honored for her lifelong association with the Museum. “Ellie,” as she is known to her friends, is one of the last living links to Florence Griswold (1850-1937), having visited and stayed at the “Holy House” when she was a little girl in the 1920s with her aunt, the artist Lydia Longacre. A proclamation from the Collections Committee and Board of Trustees was presented to her this winter, noting with appreciation her service as an Honorary Trustee since 1996 and the many gifts to the collection that she and her family have made over the years. We were happy to give Ellie the opportunity to return to the table of the artists after all these years!

Fall exhibition preview

It's normal to see photographers search the grounds, galleries, and Griswold House for that perfect picture. A moment, a reflection, a shadow—a story only they can tell.

This year, a select group of photographers has been invited to train their lenses on the Museum, outside and in, to create a body of new work for the fall exhibition, *In Place: Contemporary Photographers Envision a Museum*. With this invitation, the photographers were encouraged to focus their unique eyes on the Museum's landscape, its collections, and spaces. Featured artists are Tina Barney, Marion Belanger, Adrien Broom, Kate Cordsen, Peter Daitch, Alida Fish, Ted Hendrickson, Sophie Lvoff, James Welling, and Tom Zetterstrom.

Please read more about the artists and exhibition on the Museum's website and follow on Facebook for updates and photos of their progress.



Contemporary fine art photographer Adrien Broom alludes to times past and places unseen in her series of "Portal" images. She will return to the site throughout the year to construct alternate scenes to be viewed through this gateway. The scenes hint to the timeless of the grounds and possibilities just beyond our sight.



NEW in The Shop

Beautiful hand-painted Turkish ceramics are now available in The Shop. While on a buying trip in New York City this past February, Shop Manager Matt Greene became enchanted with these lovely one-of-a-kind pieces. They range from plates and platters to large serving bowls. Each one features its own rich color pattern with raised embellishments. Since these pieces are lead free and dishwasher safe, they are not only works of art but functional as well. Each one is uniquely handmade, so stop in today to choose the perfect piece. These make a great housewarming gift, wedding or anniversary gift, birthday present, or hostess gift.

Museum Staff on the Go!

WHETHER IT'S SETTING up displays at garden shows or providing professional speaking engagements and educational outreach (see page 9), the Museum staff is committed to reaching new audiences whenever, wherever possible.

Last fall *Wee Faerie Village* was promoted at the Big E. This winter the exhibition *The Artist's Garden* was promoted at the Connecticut Flower and Garden Show. This summer, a display for the exhibition will be seen at Hartford Blooms and the Newport Flower Show. These and similar events help us reach out to over 9,000 potential visitors this year. While at these events, staff hears everything from, "I love that museum!" to "You're the inn in Essex,

right?" and everything in between. These events are an opportunity to get to know people and invite them to the museum based on their interests. And let's face it, with art, history, nature, we truly have something for everyone.

Staff has shown their support at a variety of events held at the Connecticut State Capitol. Led by director Jeff Andersen, staff assembled at Connecticut Arts Day and #CTPlacesMatter Rally Day. These gatherings demonstrate the importance of maintaining funding for art, history, and heritage sites.

Staff members Nicole Wholean and Ted Gaffney volunteered their time to judge Connecticut History Day contests. These young regional



Museum staff reached out to over 2,000 people at the Connecticut Flower Show.

winners in grades 6 through 12 go on to compete in the state History Day competition.

ANNUAL FUND 2016

Participate in Something Special!

participation—(pah-r-tis-uh-pey-shuhn)—*noun*, to take part in, support, sharing in something; see also partnership.

IT'S THAT TIME OF YEAR—when the FGM's Annual Fund appeal begins to appear in every member's mailbox. We know you get similar appeals every day, but we hope this envelope stands above the rest.

Because you have shared in the rare beauty of this place with your families... or because you have grown in your

understanding of the world through our programming...or because this has been a place of inspiration or respite for you... we hope you **participate** in helping us reach our **2016 Annual Fund** goal. The excellence of our exhibitions, education programs, and facilities depends on our members' gifts—gifts large or small. And when we all **participate**, we *all*

share in the benefits—just like the definition says.

Keep an eye on your mailbox or use the enclosed envelope for our Annual Fund appeal, and please consider how you will **participate**! When you do, we all share in something truly special.

Contributions to the Annual Fund are separate from membership dues.

Save the Date!

34th Annual Benefit Auction & Dinner Dance

MARK YOUR CALENDARS—you don't want to miss the Museum's most elegant and important fundraiser of the year on **Saturday, September 24th!**

Please join Benefit Committee chair Deborah Moore and Auction Committee co-chairs Marie Martin and Dyanne Rafal for a truly memorable evening. Bid on a variety of exceptional works of art, unique travel packages, unforgettable events, and much more—all handsomely displayed in the Robert and Nancy Kriebel Gallery. Enjoy River Tavern's

delectable farm-to-table dinner under a lavishly-decorated tent on the Adrian P. Moore Garden Terrace along the banks of the picturesque Lieutenant River. Participate in an exciting live auction led by the talented and always-entertaining Jennifer Wright of Christie's of New York and afterward, dance to the upbeat sounds of Eight to the Bar.

All proceeds from this year's highly-anticipated gala benefit the Museum's education and outreach programs for all ages.



Bouvier Insurance knows that the Annual Benefit and Auction is a night of friends, food, and festivities!



Happy art maker at Lyme Consolidated School.

Education Outreach

IN 2015 our educators provided hands-on outreach programs for 1,260 children!

We truly enjoy taking our act on the road (sometimes even the ferry), teaching on islands, in parks, gardens, forested camps, and urban settings, as well as the many schools across Connecticut and beyond. Each calls on us for a specially tailored experience.

We have enjoyed great success with our new multi-media curriculum for all abilities and ages—pre-K onward, and have offered this to schools as a series geared towards introducing new mediums, in a method created specifically for their students' needs. We love expanding our Museum family!

Did you know that 2016 marks the 30th Anniversary of the Old Lyme Midsummer Festival?

July 29 and 30

MARK YOUR CALENDARS for this very special celebration!

It began with just a few neighbors — the Lyme Academy, the Old Lyme Inn, Bee & Thistle, the Lyme Art Association and the Museum partnering together to celebrate the arts in Old Lyme with a mix of music, art exhibitions, and food. Thirty years later the festival has grown in visitation and offerings—but has always stayed true to its mission of highlighting the culture of our community.

Visit OldLymeMidsummerFestival.com for a complete list of events and vendors and like Old Lyme Midsummer Festival on Facebook for up to the minute notifications and information.

10
Yankee Magazine
has called our
Midsummer Festival a
“Top 20 Connecticut
Event.” We agree!



We are thrilled to have Connecticut's own **Braiden Sunshine** perform as part of this special anniversary of the Midsummer Festival. America fell in love with Braiden on Season 9 of *The Voice*. Braiden and his band will perform his version of much-loved rock classics as well as original compositions. Bring a picnic and join us Friday, July 29 at 7:00 for the fun-for-the-family performance.



*Do you have photographs
like this from past festivals?*

If so, could you please contact memories@OldLymeMidsummerFestival.com? The Festival committee is putting together a commemorative booklet and might be able to include your photos.



FLORENCE GRISWOLD MUSEUM 2015 *Annual Report*



PRESIDENT'S MESSAGE

AT LONG LAST WE HAVE returned the property back to Miss Florence. This spring the Museum purchased the last private piece of Florence Griswold's former property from Warren Hannas and his wife, Christy Laurence, unifying her original property for the first time since the 1930s.

This is an important acquisition for the Florence Griswold Museum, because it enables us to put a plan in place for the next generation and beyond. As I mentioned in the Fall 2015 Ledger, it is a beautiful riverfront property which will nearly double our river frontage and give a sense of completeness to the site for the members and the public.

After Florence Griswold died in 1937, her property was sold off in several pieces. In 1947, the house, and less than an acre of land, was purchased by the Florence Griswold Association and turned into an historic house open to the public. This was the beginning of the Museum. Over time, additional parcels were acquired, including five acres of river frontage in 1996. In 2002, we opened the Robert and Nancy Kriebble Gallery to, in part, display the magnificent collection of Connecticut Art, which Hartford Steam Boiler Inspection and Insurance Company gave the Museum the year before. This was a pivotal moment for the Museum as we turned the historic house into a significant regional art museum.

With the unification of the original estate, we are now at another pivotal moment. It will take a thoughtful plan, one that requires stepping back to look at the big picture. We must also think long term. All of us involved in this project have a strong feeling that we must emphasize the land and

the riverfront. We have a beautiful campus with restored gardens and a collection of mature specimen trees that are arboretum-like in their quality. Above all, we have the riverfront along the almost untouched Lieutenant River. To help us in thinking this through, the Museum has hired Stephen Stimson Associates of Princeton, MA to create a landscape master plan for the site.

The Lyme Art Colony painters chose to come to Old

Lyme because of its natural beauty. The fields, woods, and estuaries of Old Lyme reminded them of coastal locales in France, where many of these artists were exposed to the French Impressionists. Living on this property, the Lyme Impressionists reveled in its beauty and painted its environs in the open air. We want the property today to harken back to what the artists saw.

Together, we have the opportunity to envision a museum where the landscape perfectly complements our wonderful historic house and art galleries. The result will be a place for our

members and the public to enjoy the natural beauty that surrounds us.

Ted Hamilton

Ted Hamilton



Clockwise from top right: (1) What's in the future for the Museum's historic landscape? Stephen Stimson Associates are inspired by the variety of features on the property. (2) Miss Florence walking the grounds. (3) Willard Metcalf, inspired by the flowers along the riverfront, painted *Kalmia* in 1905. (4) Not only was the Griswold property used as a place for inspiration for the Lyme Art Colony painters, but as a recreation spot too!



REPORT OF THE DIRECTOR

IN DECEMBER 2014, the Florence Griswold Museum was described by *Yankee Magazine* as one of “The 5 Best Small Museums in New England.” The article went on to highlight each of the five museums, noting that these institutions are “proof that great art isn’t found only in large cities.” The Museum has always enjoyed strong press coverage, but it was particularly satisfying to be recognized with the best of our peer institutions by a magazine so closely identified with New England.

Why did they select the Florence Griswold Museum? I can’t be sure but I bet it has to do with the unique story of Old Lyme as an artists’ colony. Everything at the Museum—the landscape, the buildings, and the collections—work in concert with one another to tell a compelling story about a group of artists who found inspiration in the beauty of this region and helped to transform it into the place we know today. The artists came here initially as visitors, staying in the Florence Griswold House, now the emotional heart of the Museum. Quite a few artists eventually became residents, serving as ambassadors for the town through the fame of their paintings and art works. It is a remarkable story that still resonates with audiences today.

The Museum’s active schedule of exhibitions, educational programs, and special events attracted 72,216 visitors, an 8% increase over the previous year. During the winter/spring of 2015, we presented *Peter Halley: Big Paintings*, an exhibition of the largest canvases of this influential contemporary artist who dramatically represents many of the new technologies and interconnections that rule our lives today. *The New York Times* highlighted this show in an article entitled “Displaying New Art in Old Museums” that described how museums like this one are experimenting with contemporary art to put collections in broader contexts and encourage the



Top: Lyme Academy College of Fine Arts students create a “pop up” exhibition. Bottom: Outreach program at the Naval Subbase Library.

participation of younger audiences.

Last summer was devoted to *All the Sea Knows: Marine Art from the Museum of the City of New York*, an exhibition that explored the close ties between Old Lyme and New York. Our curators delved into the history of New York’s Black X Line (founded by John Griswold of Old Lyme and for which Miss Florence’s father Captain Robert Harper Griswold sailed extensively) and brought new scholarship to our understanding of American maritime history. As part of the exhibition, we debuted an extensive online learning resource devoted to the correspondence between Florence’s parents that tells of both the hardships of the sea and the challenges of managing

family life. This poignant and absorbing exchange of letters can be found on the *History Blog* on the Museum’s website. Finally, *The Artist in the Connecticut Landscape* featured paintings from ten museums that contributed to a statewide digital library. Given that this exhibition was inspired by a digital collaboration, our curators borrowed the notion of the keyword search to group and cluster works of art in digital grids that illuminated the complex ways we find meaning in the Connecticut landscape.

Educational enrichment for students from pre-K through college lies at the heart of the Museum’s mission. Each program is customized to respond to the needs of teachers, parents, and students. Some of the programs take place at the Museum while others are held in classrooms or even outdoors at such places as Camp Clio in Lyme where our educators worked with adopted children and their counselors. Through our partnership with Child and Family Services, we are continuing to provide art enrichment to the B. P. Learned Mission and the New London Day Nursery. The Museum was pleased to offer therapeutic art programs for differently abled teenagers from 13 to 19 years of age in partnership with LEARN, a regional educational service center. This past fall, art students at the Lyme Academy College of Fine Arts were invited to show their paintings, created in response to an exhibition here, in a “pop up” show at the Museum. For the first time, the Museum was asked by New London Adult Education to provide a field trip experience for adults studying English as a second language, some of whom were moved to tears by the sight of Edward Moran’s 1886 painting of the “Statue of Liberty Enlightening the World” in the galleries.

By a willingness to venture out into the community, the Museum made a difference to over 11,400 students, parents, and teachers during 2015.

Without a doubt, the culminating event for many of these students was their participation in *Wee Faerie Village's Whimsical Kingdoms*, an outdoor installation that transformed the campus into a fairyland of miniature castles, towers, and palaces. In just over four weeks, a total of 15,050 people joined us for this joyous event that has won the

Museum a reputation for being a family-friendly destination.

As I peruse the pages that follow, I am reminded of the incredible talents of the Museum's staff and the loyal support of our volunteers who carry out the activities described in this Annual Report. As we look ahead, I feel confident that, together, we can fulfill the Museum's legacy as one

of the best small museums not just in New England but in America.



Jeffrey Andersen
Director



FINANCIAL REPORT

IT IS A PLEASURE to report the overall strong operating performance of the Florence Griswold Museum for the year ending December 31, 2015. The Museum leadership values transparency and fiscal responsibility. Thanks to internal controls, the Museum received a clean report from our auditors for fiscal year 2014 and ended fiscal 2015 with a modest surplus.

The Museum continues to maintain a diversified funding base. Last year, 48% of revenue was contributed income including individual and business support, public and private grants, and memberships, while 22% was earned income from exhibition admissions, museum shop sales, and education programming.

A key element in the Museum's financial stability is the strength of the endowment and investments. In order to reduce risk, the Museum has established a diversified portfolio. The endowment and other restricted funds invested for long-term purposes ended the year with a market value of \$16.8 million with income accounting for 30% of revenue.

Revenue was used to fulfill the Museum's mission with nearly half in support of exhibitions and public programs. As a result of internal budget controls and purchasing efficiencies, the Museum's administrative and facilities operating costs have continued to remain consistent.

In closing, I wish to thank the many trustees and members who serve on the Board, and Executive, Investment, and Audit Committees and also a particular thanks to the Museum staff, without whom we would not be able to deliver these great results year after year, balancing our institutional mission with fiscal responsibility and financial stability.



Fred Cote
Director of Finance

	2015	2014
OPERATING SUPPORT AND REVENUE		
Annual Giving	320,106	276,196
Contributions	191,822	261,036
Membership Dues	190,931	174,996
Business Support	90,452	75,950
Foundation & Government Support	192,594	257,889
Fundraising Events	207,315	192,050
Visitor Services (Admissions and Shop)	408,046	370,625
Education/Public Programs	127,091	116,656
Endowment and Other Investment Income	740,638	700,185
TOTAL OPERATING SUPPORT AND REVENUE	2,468,996	2,425,582
OPERATING EXPENSES		
Administration	376,546	358,448
Development and Membership	367,654	345,005
Technology	40,884	32,045
Facilities	457,599	410,188
Visitor Services & Marketing	467,278	503,328
Education	323,873	324,447
Curatorial	371,732	409,383
TOTAL OPERATING EXPENSES	2,405,566	2,382,845
NET OPERATING INCOME	63,430	42,737

OPERATING EXPENSES



- Administration - 16%
- Development & Membership - 15%
- Facilities - 21%
- Exhibitions & Programs - 48%

OPERATING REVENUE & SUPPORT



- Contributed Income - 48%
- Earned Income - 22%
- Endowment & Investment Income - 30%



ADDITIONS TO THE COLLECTION

Gifts, bequests, and purchases of significant objects are essential to the growth of the Museum's collection. All of the objects outlined below have added depth to the collection, enabling the institution to build on its commitment to fully portray the art and history of the region. The Museum is grateful for the generous gifts received this year and every year.

FINE ART

Nelson Cooke White (1900–1989)

Peonies, July 1926

Oil on panel, 14 x 20 inches

Signed LR and dated

Given in memory of Grace White Ellsworth by her children, 2015.1.1

Harriet Whitney Frishmuth (1880–1980)

The Vine, 1921

Bronze on black slate base, 11 ¾ inches h.

Signed on base: "Harriet W. Frishmuth/Copyright 1921 Gorham Company Founders/QBWS

Given in memory of Grace White Ellsworth by her children, 2015.1.2

Mary Tarleton Knollenberg (1904–1992)

Dora Washington, 1930–31

Bronze, 15 x 8 x 6 inches
Signed on base: Tarleton Sc.
Gift of Ippy Patterson, 2015.2

Ellen Louise Axson Wilson (1860–1914)

Road through the Pasture, 1910

Oil on canvas, 18 x 24 inches
Signed and dated lower right: E.A. Wilson / 1910
Museum Purchase, 2015.3

Woodhull Adams (1854–1921)

Lady by a Window

Oil on canvas, 16 x 14 inches

Signed lower left: Woodhull Adams

Museum Purchase, 2015.4

Charles Warren Eaton (1857–1937)

Evening Quiet, ca. 1905

Oil on canvas, 28 x 29 7/8 inches

Signed lower right: Chas Warren Eaton

Gift of Charles T. Clark, 2015.5

Frank Vincent DuMond (1865–1951)

Creeping Shadows

Oil on canvas, 40 x 34 x 2 7/8 inches

Signed lower left: F.V.

DuMond

Gift of David M. Smith and Jill Warren
2015.6.1

Frank Vincent DuMond (1865–1951)

Twilight Fishing (October Anglers)

Oil on canvas, 38 x 32 x 2 inches

Signed lower left: F. V.

DuMond

Gift of David M. Smith and Jill Warren, 2015.6.2

Breta Longacre (1887–1923)

Untitled (View of Griswold

House Barn), 1914

Oil on wood, 12 x 10 inches

Signed and dated lower left: BL/1914

Gift in honor of Eleanor Revill, daughter of Breta Longacre, 2015.7

Sybil Wilson (1923–1997)

Black and White, circa 1970

Acrylic on canvas, 35 x 45 inches

Unsigned

Museum Purchase with funds provided by Charles T. Clark, 2015.8

Winfield Scott Clime (1881–1958)

Shad Fisherman on Hamburg

Cove, ca. 1931

Oil on canvas, 25 x 30 inches.

Signed lower left: Winfield Scott Clime

Gift of John and Ellen Wells, 2015.9

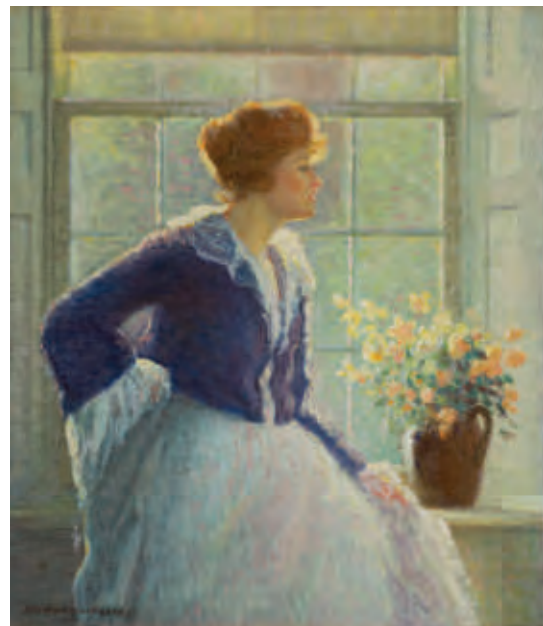
Wilson Henry Irvine (1869–1936)

Summer on the Hill, n.d.

Oil on canvas, 24 x 27 inches

Signed lower right: Irvine

Gift of David A. Behnke and Paul F. Doherty, 2015.10



Woodhull Adams (1854–1921), *Lady by a Window*

Louis Paul Dessar (1867–1952)

Sketchbook and one loose

photograph of a Dessar

painting, ca. 1885

Linen-covered sketch book, 5 ¼ x 8 ¼ inches

Gift of Diane Rubacha in memory of Marion Giaconia Daniels, 2015.11

Martin Lewis (1881–1962)

Dawn, Sandy Hook,

Connecticut, circa 1933

Oil on canvas, 30 x 40 inches

Signed lower right: Martin Lewis

Museum Purchase, 2015.12

Guy Carleton Wiggins (1883–1962)

Lincoln Square Winter, circa 1910–1911

Oil on canvas, 34 x 40 inches

Signed lower left: Guy C.

Wiggins

Museum Purchase, 2015.13

Ernest Albert (1857–1946)

Spring Thaw, 1938

Oil on canvas, 25 x 30 inches

Signed and dated lower right:

Ernest Albert. A.N.A. / 1938

Gift of Dora Mercede, 2015.14

Unidentified Maker

N.L.G.G. Tea Box, circa 1844

Wood with paper and ink

10 ¼ x 10 ¼ x 11 inches

Gift of Mr. & Mrs. David J. Powell, 2015.15

Katharine Ludington (1869–1953)

Untitled (Portrait of a girl),

1903

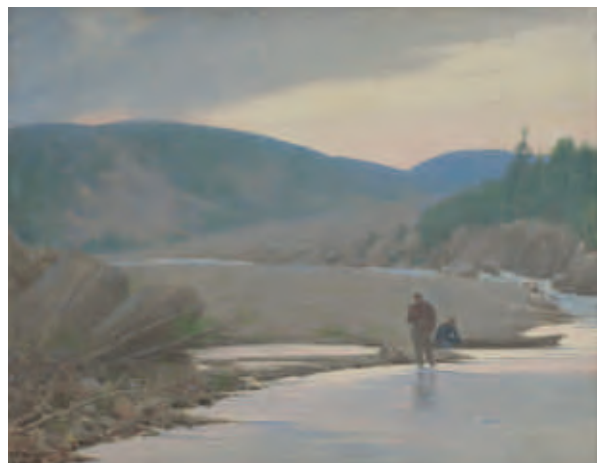
Pastel on brown paper, 15 x

11 inches

Signed lower right: K.

Ludington, 1903

Gift of N.S. Ludington, Jr., 2015.16.1



Frank Vincent DuMond (1865–1951), *Twilight Fishing (October Anglers)*



Martin Lewis (1881–1962), *Dawn, Sandy Hook, Connecticut*, circa 1933



Norman Ives (1923-1978), *4-G Series I-1 (9)*, 1965



Guy Carleton Wiggins (1883-1962), *Lincoln Square Winter*, circa 1910-1912

Katharine Ludington (1869–1953)
 Untitled (Portrait of a girl), 1902
 Pastel on brown paper, 15 x 11 inches
 Signed lower right: K. Ludington, 1902
 Gift of N.S. Ludington, Jr., 2015.16.2

Norman Ives (1923–1978)
4-G Series I-1 (9), 1965
 Acrylic on wood, 23½ x 23½ inches
 Gift of Charles T. Clark, 2015.17.1

Power Boothe (b. 1945)
Gray Drift, No. 8, 1975
 Acrylic wash on canvas, 36 x 36 inches
 Gift of Charles T. Clark, 2015.17.2

Miniaturist's watercolor paintbox, sketches, photographs, etc.
 A collection of materials relating to artist Lydia Longacre (1870–1951)
 Gift of Eleanor Revill and Family, 2015.18.1-83

Bessie Potter Vonnob (1872-1955)
A Chance Acquaintance, modeled circa 1911–12
 Plaster, 15 ½ x 7 ½ x 13 inches
 Gift of David and Suzanne Hoffman, 2015.19.1

Two books with dedications by their author, naturalist William Beebe
Beneath The Seas, 1928, to Harry Hoffman in 1928
Galapagos Worlds' End, 1924, to Jack Hoffman in 1925
 Gift of David and Suzanne Hoffman, 2015.19.2/2015.19.3

Golf Clubs once belonging to artist Harry Hoffman
 Gift of David and Suzanne Hoffman, 2015.19.4
 Unknown Maker, probably New York

Drop-leaf Table, ca. 1810–25
 With display label and original letter from Florence Griswold To Nella Granville O'Brien, January 6, 1932
 Mahogany, 28 x 48 x 18¾ inches
 Gift of John C. and Joan F. O'Brien, 2015.20

ARCHIVES & LIBRARY

A selection of letters exchanged by Lyme Art Colony artists with members of the White family, and personal correspondence and letters addressed to Florence Griswold by various correspondents
 Gift of George and Betsy White

A selection of 188 American art and conservation books
 Gift of Lance Mayer and Gay Meyers

39 Original historical documents including deeds of the Black Hall/Mile Creek area of Old Lyme, Connecticut
 Gift of Virgil Huntley

Henry E. Comstock
 2 original handwritten letters to his father, Charles F. Comstock (1841–1863), dated March 16th, 1852, and one later letter written from Portsmouth, England
 Gift of Carolyn Wakeman

"Ocean Mosses"
 Scrapbook of seaweed compiled by Charles H. Ludington
 Leather bound, 8 ½ x 7 inches
 Gift of Mr. and Mrs. Charles Townsend Ludington

Botanical Scrapbook compiled by Charles H. Ludington
 "CHL" containing herbarium labeled with locations and dates
 Leather bound, 9½ x 7¾ inches
 Gift of Mr. and Mrs. Charles Townsend Ludington

Record of Works by Winslow Homer
 Edited by Abigail Booth Gerds
 Gift of Mr. and Mrs. Raymond J. Horowitz Foundation

LOANS TO OTHER INSTITUTIONS

Bruce Museum of Arts and Science, Greenwich, CT
 Connecticut River Museum, Essex, CT
 Fine Arts Museum of San Francisco, de Young Legion of Honor, San Francisco, CA
 Hartford Steam Boiler, Hartford, CT
 Office of the Lieutenant Governor, Hartford, CT
 Pennsylvania Academy of the Fine Arts, Philadelphia, PA



Bessie Potter Vonnob (1872-1955), *A Chance Acquaintance*, modeled circa 1911–12



Unidentified Maker, N.L.G.G. Tea Box, circa 1844



EDUCATIONAL SERVICES

Educational services lie at the heart of the Museum's mission. "To foster the understanding of American art, with emphasis on the art, history, and landscape of Connecticut" is a goal that has touched thousands of students whose schools are listed below.

SCHOOL GROUPS

Alcott Elementary School, Wolcott
ARC of New London County, Groton
A.W. Cox Elementary School, Guilford
Bearpath Elementary School, Hamden
Berlin High School, Berlin
Calvin Leete Elementary School, Guilford
Charles Wright Elementary School, Wethersfield
Chester Elementary School, Chester
Connecticut College Art Students, New London
CREC Public Safety Academy, Middletown
Connecticut Experiential Learning Center, Branford
Deans Mill School, Stonington
Deep River Elementary, Deep River
Dual Language & Arts Magnet School, Waterford
East Greenwich High School, E.Greenwich, RI
East Hampton High School, E.Hampton
Emma Hart Willard School, Berlin
Fishers Island School, FI, NY
Flanders Elementary School, East Lyme
Friendship School, Waterford
Goodwin Elementary School, Storrs
Haddam Killingworth High School Honor Students, Haddam
Hamden Hall Country Day, Hamden
Hubbard Elementary School, East Berlin
Independent Day School, Middlefield
ISAAC, New London
Jeffrey Elementary School, Madison
John B. Sliney School, Branford
Lillie B. Haynes Elementary School, Niantic
Lyme Old Lyme Center School, Old Lyme
Lyme School Art Club, Lyme
Melissa Jones Elementary School, Guilford
Middlesex YMCA Summer Camp, Middletown
Monroe High School, Monroe

Moms Club, Old Saybrook
Morgan High School, Clinton
Nathan Hale Middle School, Moodus
New London Adult Education, New London
New London Arts Magnet School, New London
New London High School, New London
Niantic Center School, Niantic
North End Middle School, Waterbury
Norwich Technical High School, Norwich
Old Lyme Middle School, Old Lyme
Oswegatchie School, Waterford
Oxford Academy, Westbrook
The Masters School, West Simsbury
West Greenwich High School, West Greenwich, RI
The Unquowa School, Fairfield, CT

SCOUT GROUPS

Girl Scouts of Branford
Cub Scouts of Clinton
Brownie Troop #63161 of Groton
Girl Scouts of East Haven
Girl Scouts of Guilford
Girl Scouts of Haddam
Girl Scouts of Hamden
Brownies of Middlefield
Girl Scouts of Milford
Brownies of Mystic
Girl Scouts of Sandy Hook
Girl Scouts of Stamford
Cub Scouts of Westbrook
Troop #31
Troop #65423

ADULT GROUP TOURS

A Way for the Day, Westport
Bloomfield Friends of the Library, Bloomfield
Catholic Adults of Brooklyn, Brooklyn, NY
Central Connecticut State University, New Britain
Choate Reunion Tour, Essex
Connecticut College 19th & 20th Century Art Class, New London
Connecticut College Large Painting Class, New London
Cornwall Parks & Recreation, Cornwall
Coverys Planning, Boston, MA

Deep River Historical Society Volunteers, Deep River
Fairfield University American Studies, Fairfield
Fairfield University Museum Studies, Fairfield
Granby Senior Center, Granby
Greater Hartford Arts Council, Hartford
LIFE at Mount St. Mary College, Newburgh, NY
Litchfield Community Center, Litchfield
Masonicare at Ashlar Village, Wallingford
Meadow Ridge Retirement Community, Redding
Meridan Senior Center Arts Club, Meridan
Midstate Investors, Guilford
Museum School at Springfield Museums, Springfield, MA
Newport Hospitality for Nationwide Insurance, Newport, RI
Northwest CT Community College, Pleasant Valley
Oronoke Village, Stratford
Painting Class from Lyme Academy, Old Lyme
PepsiCo Group, Purchase, NY
Prime Time Tours, Bellport, NY
Providence Plein Air Group, Providence, RI
Raleigh North Carolina Tours, Raleigh, North Carolina
Seabury Residents, Bloomfield
Shoreline Village, Branford
Slater Museum Docents, Norwich
Southbury Senior Center, Southbury
Strive School, Clinton
The Hyde Collection, Glen Falls, NY
The Kennedy Center, Trumbull
W.I.S.E. (Worcester Inst. of Senior Ed.), Worcester, MA
Weir Farm Staff & Volunteers, Wilton
Wesleyan American Art Students, Middletown
Westerly College Club, Inc., Westerly, RI
White Star Tours, Redding, PA
Widows & Widowers Group, Simsbury
Y's Men of Westport & Weston, Westport

PROFESSIONAL DEVELOPMENT GROUPS

Southeastern Connecticut Art Teachers' Professional Development Day

OUTREACH

Big E, Springfield, MA
BP Learned Art Classes, New London
BP Learned vacation camp series, New London
Boston Flower Show, Boston, MA
Camp Clío two painting nights, Camp Claire, Lyme
Center School winter painting class (schoolwide), Old Lyme
Connecticut Art Education Association
Connecticut College Arboretum three classes, New London
Connecticut Council for the Social Studies
Connecticut Flower Show, Hartford
Emma Hart Willard School-5 day program, Berlin
Friendship School Painting two-day program, Waterford
Girl Scouts of America
Goodwin School Camp Fair, Old Saybrook
Harkness Park Family Day, Waterford
Ivoryton Library Fairy Class, Ivoryton
Lyme Consolidated School Art Days, Lyme
LOLHS Camp Fair, Old Lyme
Mile Creek School Afterschool Program, Old Lyme
Mile Creek School two day school wide painting, Old Lyme
New London Day Nursery five part series-Art 101, New London
Subase Library Family Programming, NLON
Sunshine Kids Paint Out Cancer Event, Mystic
Shipyard

PROFESSIONAL PRESENTATIONS BY STAFF

Visiting Instructor for AHI 284: House Museums
Connecticut College, New London, CT
Art Show Judge: Ninth Annual Land Trusts Photo Contest, Old Lyme, CT
Lecture: *Impressionism in Connecticut: Cos Cob to Old Lyme*, Waterford Public Library, Waterford, CT
Lecture: *Painted Chests of the Connecticut Shore*, Historical Society of Early American Decoration Research Center, Old Sturbridge Village, Sturbridge, MA

Lecture: *The American Impressionists at Old Lyme*, Hermitage Museum, Norfolk, Virginia
Lecture: *Peter Halley: Big Paintings*, The Oxbow Gallery, Northampton, MA
Art Show Judge: On the Edge of Your Seat: Chairs for the 21st Century, Center for Art in Wood, Philadelphia, PA
Lecture: *Museum Enchanted: Attracting Visitors through Creativity*, TEDx Talk at Connecticut College, New London, CT
Lecture: *The American Impressionists at Old Lyme*, Union Club, New York
Art Show Judge: Three Rivers Community College Student Art Show 2014-2015, Three Rivers Community College, Norwich, CT
Seminar: *New England Art Colonies*
Rhode Island School of Art Continuing Education, Providence, RI
Presentation: *Anything and Everything About the Florence Griswold Museum: An Art-Filled Past, Present, and Future*, part one of a series
A Sampling of Connecticut Museums
The Heights at Avery Heights, Hartford, CT
Presentation: *Using VTS to Read Images*, part one of a series
Summer Workshop on the New Social Studies Frameworks
CCSU, New Britain, CT
Lecture: *The American Impressionists at Old Lyme*, Springfield Museums, Springfield, MA
Lecture: *The Lure of the Connecticut Coast*, Bruce Museum, Greenwich, CT
Art Show Judge: Canton Artists Guild, 48th Annual Open Juried Exhibition, Gallery on the Green, Canton, CT
In-class Presentation: A Curatorial Practicum, Connecticut College (Department of Art History), New London, CT



GIFTS & GRANTS

Gifts & Grants

GRANTS

Community Foundation of Eastern CT
Community Foundation of Middlesex County
Connecticut Humanities
Connecticut Office of the Arts
CT Department of Economic & Community Development
Ellsworth and Virginia Grant Fund
Essex Savings Bank
Frank Loomis Palmer Fund
George A. & Grace L. Long Foundation
Town of Old Lyme

SPONSORS

All Pro Automotive
Bank of America
Bouvier Insurance
Centerbrook Architects & Planners, LLC
Essex Financial Services
Essex Savings Bank
The Hartford Steam Boiler Inspection & Insurance Company
Imagineers, LLC
Infiltrator Water Technologies
Pasta Vita
Traystman & Coric, LLC
Venu Contemporary Culture Magazine
Webster Bank
Whelen Engineering Company
Wilber & King Nurseries
WSHU Public Radio Group

ENDOWED FUNDS

Dorothy Clark Archibald Acquisition Fund
Sally Bill Children's Education Fund
The David W. & Mary S. Dangremond Acquisitions Fund
Fehrer Family Fund
The Yale Kneeland Object Conservation Fund
Elizabeth Matthews Hubbard Education Fund
Sali Godard Riege Educational Fund
Lelan F. Sillin, Jr. Education Endowment Fund
The Nika P. Thayer Exhibition and Publication Fund
Thayer Sanderson Docent Fund
Samuel Thorne Memorial Lecture
Wilson Wilde Art Conservation Fund
The Arden and Millicent B. Yinkay Exhibition Fund

ACQUISITION FUND

Charles T. Clark
Mr. & Mrs. David W. Dangremond
James and Eleanor Ferguson

EXHIBITION FUND GIFTS

Maxwell & Sally Belding
Mr. Vincent J. Dowling, Jr.
Mary Farrell
The Howard Gilman Foundation
Mr. & Mrs. J. Geddes Parsons
William E. Phillips & Barbara Smith
George & Jane Rapport
Bob & Betsey Webster

SPECIAL PURPOSE GIFTS

Anonymous
Ms. Cathy DeMeo & Gregory Futoma
Rudolph & John Dirks Fund
Eversource Energy—in honor of Richard Booth
Mary Farrell—The Howard Gilman Foundation
John & Kelly Hartman Foundation
Pam Himmelrich
Don & Sue Joffray
Ron Luich
Mr. and Mrs. Evalyn Milman
Mr. & Mrs. J. Geddes Parsons
Mr. & Mrs. Stephen Percy
Rose Petersen & Brian Lowry
Sun Life Financial—in honor of Richard Booth
The Platner Family Foundation
George & Cynthia Willauer

THE YALE KNEELAND OBJECT CONSERVATION FUND

Anonymous
Agrifos Partners LLC
Charles Atkins
Mr. Andy Baxter
Marco & Angela Belgiorio-Zegna
Dr. Susan C. Bourke & Christine M. Shelton
Jonathan & Deborah Butler
Mr. & Mrs. John Callan
Jonathan Carlisle
Mr. and Mrs. Farouk Chaouni
Jill Ker Conway
Jeff & Betsey Cooley
Mr. Alberto Cribiore
Raffaella Cribiore
Mr. & Mrs. Robert Czepiel
Mr. & Mrs. David W. Dangremond
Dauntless Club, Inc.
The Dilenschneider Group
Mr. Vincent J. Dowling, Jr.
Mr. Peter Eliel
Mr. & Mrs. Jeb N. Embree

Elizabeth & Anthony Enders
Anne & David Ferguson
Emily Fisher & Evan Griswold
Mr. & Mrs. Chad Floyd
Alice Frelinghuysen
Sherwin M. Goldman
Alva Greenberg
Mr. & Mrs. Frank Hamilton III
Hildegard & Hunter Hannum
Judy Hansen
Nancy Newcomb & John Hargraves
Lisa & Amelia Holmes
Paul & Linda Holt
Ms. Alexandra M. Isles
Joanna J. & Lee A. Jacobus
Fritz Jellinghaus & Cynthia Glacken
Karen Katen Foundation
Mr. Charles Kingsley
Anna Kneeland
Mr. & Mrs. Richard Lightfoot
Mr. & Mrs. Newton S. Merrill
Gay Myers & Lance Mayer
Dr. & Mrs. John Niblack
Christine Wolfe Nichols
Novak Brothers Landscaping
Mr. Joseph Penner
Sherman Fairchild Center for Objects Conservation
Mr. & Mrs. John F. Pritchard
Pascal Py
Laura Randall
Mrs. Philip Schonberger
Janet & Brian Slater
Linda Sylling
Sandy Thurston
Mr. & Mrs. Charlie Warner
Lori Warner Studio/Gallery
Bob & Betsey Webster
George & Cynthia Willauer

GIFTS IN KIND

Andrew Rubenoff: Design
Bogaert Construction Company, Inc.
Christie's
Virginia C. Currie
Mr. & Mrs. Chad Floyd
Dr. & Mrs. William Gerds
Gourmet Galley Catering
Robert & Wendy Gunn
Jonathan Edwards Winery
Dr. Julie Liefeld
Minuteman Press
Roy & Deborah Moore
Mr. Geoffrey Paul, The Paul Foundation
Mr. & Mrs. John F. Pritchard
Frank Racette
George & Jane Rapport
Lisa Reneson
Julie Garvin Riggs
the-e-list
Sheila M. Wertheimer
Nelson Holbrook White
George & Cynthia Willauer



Discovery Sundays are fun for the entire family—artists and sun-worshippers alike!

MATCHING GIFTS

Aetna Foundation, Inc.
Credit Agricole Corporate & Investment Bank
Eli Lilly & Company Foundation
Eversource Energy Foundation
GE Foundation
Hanover Insurance
IBM
Johnson & Johnson Family of Companies
Norfolk Southern Foundation
Pfizer Foundation
Rockefeller Financial Service, Inc.
United Technologies

MEMORIAL GIFTS

In Memory of Marion (Trix) Bodde
Maureen Gilardi
Leon & Iris Lampert
Mysticalligraphers
Joan & John Wiles

In Memory of Betty Chamberlain
Coletta Ackermann
Laura & Richard Ashton
Rev. Timothy Boggs
Mary Broughton
Grace V. Conlin & Jed Conlin
Mr. Jeremiah Donovan
Robert & Susan Hellier
James & Hedy Korst
Dr. & Mrs. John Niblack
Tracy Osgood
Nancy Tillberg

In Memory of Susan Lawder Hyde
Mrs. F. Patrick McFadden
Helena Minton

In Memory of Terry Pfeil
Joan Danielsen
Sandi McCourt
Mr. & Mrs. Stephen Percy
Barbara Tuneski
Mr. & Mrs. Louis Venditti

In Memory of Philip Schonberger
David & Agneta Borstein
Anita Brown
CohnReznick
Cranmore, Fitzgerald & Meaney

Ceil & Joe DeMaio
Mrs. Arlene Elovich
Debbie & Bruce Fischman
Mr. & Mrs. Arnold C. Greenberg
Mr. & Mrs. David Kaden
William Lavine
Suzanne Levine
Tamara & Marc Levine
Arlene & Daniel Neiditz
The Simon Konover Company
Waterford Hotel Group
Roberta Woronow & Theodore Kaplan
The Zachs Family

In Memory of Tony Thurston
Hyla & James L. Cohen
Jeff & Betsey Cooley
Frederick & Rebecca Crosby
Mr. & Mrs. Robert Czepiel
Dauntless Club, Inc.
Mr. & Mrs. Robert English
Mr. & Mrs. Sean Flynn
J. Gregory & Joan Hickey
James & Hedy Korst
Dr. & Mrs. William A. Lieber
Mr. & Mrs. Richard Lightfoot
Marjorie Mead
Dr. & Mrs. John Niblack
Mr. & Mrs. Stephen Percy
Mr. & Mrs. John F. Pritchard
Reynolds' Garage and Marine, Inc.
Mr. & Mrs. David Semonite
Bob & Betsey Webster
Steve & Kathy Wilson

In Memory of Florence Timura
Brian M. Timura, MD

LIEUTENANT RIVER SOCIETY

Our deepest thanks to the following donors who have included the Museum in their estate plans.

Mr. Jeffrey W. Andersen & Ms. Maureen McCabe
Dorothy Archibald † *
Constance Mary Ayars
Alice T. Barnwell †
Rufus Barringer † *
Andy Baxter
Rudolph Bergmans & Ms. Ann Lane
Mr. & Mrs. Charles R. Berry

Mr. & Mrs. Rudolph F. Besier
Sally J. Bill †
Todd Blumenkopf †
Richard H. Booth
Mr. & Mrs. Wilson G.
Bradford
Mr. † & † Mrs. Howard D.
Brundage
Edward W. Bush, Jr.
Jonathan D. Carlisle
Mr. † & Mrs. † Valentine B.
Chamberlain III
Jane Chesnutt
Charles T. Clark
Jonathan L. Cohen
Patricia & Wayne Coon
Anthony & Ann Cooper
Mary E. Copp †
Sara Twigg Crawford † *
Carley Cuniff †
Mr. † & Mrs. † Laci De
Gerenday
Mr. † & Mrs. † Roger Dennis
Albert † & † Marianne Dock
Grace W. Ellsworth †
Mr. & Mrs. Jeb N. Embree
Catherine † &
† Elizabeth Fehrer
Margaret Fisher †

John V. Frank
Mrs. W. Deming
Goodale, Jr. †
Mr. and Mrs. William Grabe
Ellsworth S. † &
† Virginia Grant
Mary Thomas Gray
Mr. † & Mrs. † Frank
Hamilton, Jr.
Jean Harris †
Mr. † & Mrs. † John Hartman
Mrs. Theodore Hillhouse
Paul & Linda Holt
John T. & Karen N. Horn
Francis E. Jarrabeck
Gloria L. Johnston
Dr. David &
Marcia Kalayjian
Mr. † & Mrs. † Richard G.
Kehoe
Jim & Hedy Korst
Mr. † & Mrs. † Robert Kriebel
Hildred H. Lasser †
George Lay †
Thelma J. Levin †
Curly Lieber
Townsend & Jane Ludington
Ron & † Joanne Luich
Mr. & Mrs. S. Van Vliet
Lyman

John A. & Carol
McKinney, Jr.
Mr. & Mrs. Clement C.
Moore, II
Deborah Moore
Mrs. Douglas S. Moore
John & Heidi Niblack
Victoria Nott
Mr. † & Mrs.
† John H. Noyes
Jephson † & † Betty
Chadwick O'Connell
Dorothy Patee †
Stephen & Marilyn Percy
William E. Phillips
Mr. & Mrs. David Preston
Charles Price † *
John & Lee Pritchard
Arthur & Hilde Reichenbach *
Cleaveland Rice, Jr. † *
Mr. & Mrs. John H. Riege
David W. Sargent †
Edith Mary Scott
Alex & Sondra Smith
Barbara Smith *
Gregory † & Anna † Smith
Barbara & Alan Spargo
Mrs. John L. Thayer †
Mr. & Mrs. Samuel
Thorne Jr.



These kids aren't chicken about art. They love Museum outreach programs.

Mrs. Samuel Thorne †
Tony † & Sandy Thurston
Genevieve Tripp †
Helen B. Uebelacker †
Mark & Roberta Velez
Robert D. Webster
Heide Weise
Nancy C. Young Williams
John Wollschlager
Mrs. Millicent Yinkey †

Virginia Darling Young †
Henry M. Zachs
One Anonymous Donor

* charitable gift annuity
† deceased



BENEFIT AUCTION DONORS

18

Thank you to all of our Auction donors who help make this time honored fundraiser so successful!

Abby Taylor Fine Art, LLC
The Adventure Park
Brant Amacher, Stone Mason
American Cruise Lines
Argia Mystic Cruises
Dr. Paul A. Armond &
Mr. Fred W. Harger
Arne E. Ahlberg American
Antique Furniture
Arthur Murray Dance Studio
Mary L. Avery
Ballek's Garden Center
Mr. & Mrs. Rudolph F. Besier
Billie Beads
Black Whale Antiques
Bonne Sante Wellness
Bravo Bravo
Bridgeport Bluefish
Professional Baseball
Broken Arrow Nursery
Neely Bruce
Café Routier
Mr. & Mrs. S.E. Canaday
Helen Cantrell
The Captain Lord Mansion
Rick & Donna Carlson
Chester Charter, Inc.
Chester Gallery
Chestnut Hill Concerts
CL Phillips Fine Furniture
Jeff & Betsey Cooley
Mr. & Mrs. Robert Czepiel
Deep River Design
Delamar Southport
Dog Watch Café
E.F. Watermelon

Eastern Connecticut
Symphony Orchestra
Peter & Jennifer Eio
Ekonk Hill Turkey Farm
Elizabeth Arden
Red Door Spa
Mr. & Mrs. Jeb Embree
Essence Center for Beauty &
Wellness
Essex Steam Train &
Riverboat
Essex Winter Series
Leslie Evans
Faces Aesthetics Skincare
Angie Falstrom
Mr. & Mrs. Stuart P. Feld
Ralf Feyl
Fresh Salt Restaurant
Judy Friday
Nancy Friese
Fromage Fine Foods &
Coffees, LLC
Garde Arts Center
Goodspeed Musicals
Elizabeth Gourlay
Gourmet Galley Catering
Mary Green LaForge
Alva Greenberg
Dorie Greenspan
Peter Halley
Mr. & Mrs. Frank
Hamilton III
Peter Harron
Lynda Susan Hennigan
Homeworks
Alan Horwitz, Well Suited

The Inn at Stonington
International Bicycle
Tours, Inc.
Jonathan Isleib &
John M. Fay
Jonathan Edwards Winery
Barbara Kaciek
Louise Kalin
Kebabian's Oriental Rugs
Hedy & Jim Korst
La Gondola Providence, Inc.
Sally & Larry Lawrence
LEGO Systems Inc.
Carol LeWitt &
Bruce Josephy
Lyman Orchards Golf Club
Lyme Shores Sports Club
Christopher Magadini
Fred & Marie Martin
Maureen McCabe
William McCarthy
Charlotte Meyer
Micro Marketing, LLC
Cynthia Miller-Aird
Mohegan Sun
Mr. & Mrs. James B.
Murphy II
Musical Masterworks, Inc.
Mystic Seaport
New Britain Museum of
American Art
New Haven Symphony
Orchestra
The New York City Ballet
North by Northeast
Enterprises, LLC



Eight to the Bar had everyone dancing at last year's Benefit Auction!

Okemo Mountain Resort
Old Lyme Inn &
The Side Door
Olio Restaurant & Bar
Jeffrey Pan
Mr. & Mrs. Stephen Percy
Peter Emanuel/Jane
Martineau Duo
William Phillips &
Barbara Smith
Pink Tulips
Claudia Post
Pough Interiors, LLC
The Public Theater

Quassy Amusement Park
& Waterpark
John & Dyanne Rafal
David D.J. Rau
Red 36
Chet Reneson
Renni Ridgeway-Korsmeyer
The Ritz-Carlton, Grand
Cayman
River Tavern Café
Rob Rivers, The Salon & Spa
Randy Robinson
Root Yoga Studio
Rota Portrait Design

Rustica Ristorante
Ruth Hendel Productions
Salon Pure
Seaside Wine & Spirits
Isabelle Seggerman
Patricia M. Shippee
Katherine Simmons
Simply Pearls,
The Gallery & More
Susan & Robert Staab
Andrew Stevovich
Stonington Country Club
Gregory Strupes
Tony Sullivan
Super Tours, LLC
Thames River Greenery
Michael Theise

Sandy Thurston
Timothy Pamment Salon
Total Design Source, LLC
Treasures
Union Gables Bed &
Breakfast Mansion
Weekapaug Inn
Dr. & Mrs. John Wells
Jane M. White
Mrs. Joseph Whitley
Elisabeth Wilds
George & Cynthia Willauer
Steve & Kathy Wilson
Yale Repertory Theatre

BENEFIT LEADERS

Andy Baxter
Daniel Hansen
Virginia & Timothy Millhiser

BENEFIT BENEFACTORS

Richard & Catherine Millard
Mr. & Mrs. James B.
Murphy, II
George & Jane Rapport
Mr. & Mrs. William E.
Phillips
Bob & Betsey Webster

BENEFIT PATRONS

Jeffrey Andersen &
Maureen McCabe
Carl & Amanda Asman
Mr. & Mrs. Rowland Ballek
William Brooks
Jonathan & Deborah Butler
Susan Cartledge
Jeff & Betsey Cooley
Kate & Richard Cordsen
Peter & Jennifer Eio
Mr. & Mrs. Chad Floyd
Mr. & Mrs. Frank
Hamilton III
Paul & Linda Holt

Dr. & Mrs. Allan Inglis
Mr. & Mrs. Michael Maney
Fred & Marie Martin
Nancy Newcomb &
John Hargraves
Mr. & Mrs. John E. Noyes
Dr. Margaret O'Shea &
Mr. Daniel O'Shea
Mr. & Mrs. Stephen Percy
Jeff & Joan Priest
Mr. & Mrs. John F. Pritchard
Dr. & Mrs. Raymond
Schoonmaker
Dr. & Mrs. Joseph P. Semple
Caroline & Milton J. Walters



2015 ANNUAL FUND DONORS

PRESIDENT'S CIRCLE

Anonymous
Constance Mary Ayars
Mr. Andy Baxter
Mr. & Mrs. Richard Booth
Jonathan & Deborah Butler
Mr. & Mrs. James Childs
Mr. Jonathan L. Cohen
Spencer Davidson &
Tula Telfair
Mr. Vincent J. Dowling, Jr.
Mr. & Mrs. Jeb N. Embree
Mary Farrell & Dan Sullivan
Mr. & Mrs. Frank
Hamilton III
Mr. & Mrs. Chuck Hinckley
Paul & Linda Holt
John & Karen Horn
Karen Katzen Foundation
Mr. & Mrs. James Korst
Ms. Helen Kriebel
Mr. & Mrs. Larry J. Lawrence
McHue Millhiser Trust
Virginia & Tim Millhiser
Roy & Deborah Moore
Dr. & Mrs. John Niblack
Mr. & Mrs. J. Geddes Parsons
Bill Phillips & Barbara Smith
George & Jane Rapport
Mr. David Sherrill
Joe & Clinton Standart
Bob & Betsey Webster
Mrs. Renee Wilson

DIRECTOR'S CIRCLE

Jeff Andersen &
Maureen McCabe
Charles T. Clark
Jeff & Betsey Cooley
Eric & Monique Foster
Wayne & Barbara Harms
Joanna J. & Lee A. Jacobus
Don & Sue Joffray
Dr. & Mrs. Robert S. Martin
Joanne E. Masin
Mr. & Mrs. John Noyes
Barbara & David Preston
Jeff & Joan Priest
Mr. & Mrs. John F. Pritchard
Thomas A. & Georgina T.
Russo
Dr. & Mrs. Joseph P. Semple

George & Cynthia Willauer
The Zachs Family

CURATOR'S CIRCLE

Anonymous
Robert & Shirley Adams
Frances C. Ashley
Mr. & Mrs. Rudolph F. Besier
Ms. Betty Challengren
Mr. & Mrs. Peter Cummins
Mr. John C. Evans
Yves Feder & Linda Skernick
John L. & Alison C. Forbis
Mr. & Mrs. David Frankel
Mr. & Mrs. William Grabe
Mrs. Robert Klimke
Dr. & Mrs. Gerald Laubach
Nan & Mark Lvoff
Mr. & Mrs. S. Van Vliet
Lyman
Mrs. Helen Maher
Dr. Margaret O'Shea &
Mr. Daniel O'Shea
Mr. & Mrs. Charles H. Page
Mr. & Mrs. Stephen Percy
John & Dyanne Rafal
Carol & Steve Ross
David & Betsy Sams
Carolyn Wakeman &
Robert Tierney
Mr. George M. Yeager

FRIEND'S CIRCLE

Anonymous
Sue & Ed Aberbach
Ms. Dorothy Adkins
Gary & Ann Agasi
Rev. Thomas Ahern
Mrs. Beverly Ahlers
Cynthia Allyn
David & Charlene Amacher
Thomas Angers &
Timothy VanDaff
Kristina & John Antoniadis
Mr. & Mrs. Curtis E.
Askelson
Robert & Karen Askins
Pamela & Roderick Atkins
Sally H. Aubrey
Mr. & Mrs. John Avery
Mr. & Mrs. Thomas Bagg
Betty Bail
Edward & Julia Balfour
Dr. & Mrs. Robert Ballard
Mrs. Charles E. Baskett
Stephen & Susan Bates
Charles & Barbara Beal
John & Sue Beatty
Mr. & Mrs. Michael
Beaudette
Mr. & Mrs. James Bechtel
Mr. & Mrs. Thomas Beers
Mr. & Mrs. John Benda
Mr. & Mrs. William Benner
Mrs. Heather Bennett
Mr. & Mrs. John P. Bent, Jr.
Bill & Sharon Bergquist
Mr. & Mrs. Chapman Berry
Mr. & Mrs. Charles R. Berry
Mrs. MJ Bertolini
Mrs. Phyllis Bevington
Ann Bliss
Dr. Barry M. Bloom
Wayne Boettner & Hildegard
Wiss-Boettner
Bogaert Construction
Company, Inc.
Mr. & Mrs. Robert B. Boody
The Rhoda & David Chase
Family Foundation, Inc.
Gilbert Boro
Mrs. Richard W. Bowman
Mr. & Mrs. Wilson G.
Bradford
Michael & Eloise Brady
Ms. Sandra Bramhall
Dr. Irwin Braverman &
Marian Wexler
Adrienne & Andy Brennan
Mr. & Mrs. Jeffrey H. Brewer
Mr. & Mrs. Donald Brigham
Ms. Nancy Brinley
Charles & Nicoll Brinley
Mimi & James Brooks
Ms. Lorraine M. Broom
Mary Broughton
Mrs. Templeton Brown, Jr.
Irene M. Buckley
Mr. & Mrs. Wim Budding
Richard V. W. Buel, Jr.
Janet & Alfreda Burblis
Barbara Burke
M.K. Busch & D. Picchioni
Thea Bussmann &
Eugene Kapusta



Each year the drifts of daffodils in the Woodhead Memorial Garden invite visitors to celebrate the promise of spring.

Rolf & Joy Bylan
Kathy Calnen &
Michael McKinley
Pat & John Campion
Mr. & Mrs. S.E. Canaday
Helen Cantrell &
John Heckman
Sharon Carlee
Alisa Carlson
Susan & Thom Cartledge
Helen & Bill Chatman
Lynn H. Cherry
Jane Chesnutt &
Mallory Rintoul
Mr. & Mrs. Samuel W. Childs
Mr. & Mrs. Thomas Childs
Robert & Heather Ciosek
Carol H. Clark
Jeanne K. Clark &
Richard J. Katucki
Marshall Clark
Mrs. Virginia Clark
Ms. Kay Knight Clarke
Constance Clement
Mrs. Constance S.B. Cliffe, Jr.
Richard Clippinger
Ms. Barbara Coffin
Mrs. Matilda Colihan
Mr. & Mrs. Harwood B.
Comstock
Mrs. Susan Connors &
Mr. Anthony Lopez
Clare D. Conover
Audrey Conrad
Patricia & Wayne Coon
Anthony & Ann Cooper
Mrs. Belton A. Copp
Mary Anne Cox
Frederick & Rebecca Crosby

Elizabeth Cummiskey
Denis & Linda Cunningham
Margaret M. Cunningham
Sally D'Aquila
Ramzi Dagher
The Rev. Patricia F. Davidson
Mr. & Mrs. Nathaniel B. Day
Franca L. DeRosa
Patricia Cyr Devoe
Kate Dimancescu
Mr. & Mrs. Jonathan Dodd
Deborah Downie
Julie & Bill Dunbar
Mr. & Mrs. Henry E.
Dunn, III
Terry Eddy
Peter & Jennifer Eio
Elizabeth & Anthony Enders
Jim & Isabelle English
Epstein Family
Nancy Fairchild
Craig & Sara Fanning
Michele Farley
Mr. & Mrs. Edward P.
Farman
Mr. & Mrs. Charles Farrow
Carolyn Fast & Scott Brown
Mrs. Ethel H. Feltham
Eleanor E. Ferguson
Susan Ferguson
Melissa Fetter
Mr. & Mrs. John R. Fix
Jane C. Flounders
Mr. & Mrs. Chad Floyd
Stephen, JoAnn &
Christina Flynn
Jim & Barb Francese
Mr. & Mrs. John E. Friday Jr.
Howard & Sandra Fromson



No one will forget the winter of 2015! Despite bitter temperatures and feet of snow, the site's quiet beauty and serenity still captivates.

Mr. & Mrs. John Frost
Roxannah Gallagher
Mr. & Mrs. Peter W. Gerster
Wendy Gifford &
Gerald Degenhardt
Mr. & Mrs. Gildersleeve
John & Maren Gillespie
The Gingras Family
Dr. Barbara Glista
Don & Doina Gonci
Christina Gotowka
Mr. & Mrs. Alexander C.
Graham, Jr
Kimberly Grant
Jeff & Heather Graybill
Ms. Katherine Green
Mr. & Mrs. Brian Greenho
Mr. & Mrs. Robert H.
Gregory
Henry Griggs &
Jill Abramson
Ms. A. Julia Griswold
Timothy C. Griswold
Malcolm & Janet Gross
Mr. & Mrs. William H.
Grover
Robert & Wendy Gunn
Barbara & Ted Hageman
Dr. & Mrs. Mahlon Hale
Mr. & Mrs. Charles J. Hamm
Jim & Gail Hamsher
Hildegard & Hunter
Hannum
Andrew Hansen &
Kevin Smith
Mr. Daniel S. Hansen
David Harlow & Pauline Lord
Peter & Colette Harron
Elaine Haughton
Nancy J. Healy
Mrs. Liz Heard
Mr. & Mrs. Mitchell
Heffernan
Mr. & Ms. John Heiser
Robert & Susan Hellier
Hendels, Inc.
Mr. & Mrs. David Henderson
Mr. & Mrs. James S. Herman
Susan Hermanson
Laurie & Rob Hernández
Mr. & Mrs. Hans Jurgen Hess
Mrs. Muriel Hinkle
Ms. Lisa K. Holmes
Paul & Linda Holt
Peyton C. Horne
Mr. & Mrs. James Horton

Dr. & Mrs. William J.
Hostnik
Gail M. Hull
John Jay & Sally Huss
David Hutchinson &
Panutda Suwannanonda
Mary B. Hyson
Barbara & Ray Jacobsen
Mr. Graham K.L. Jeffrey
Dorothy Jensen
John & Emily Johl
Alexandra Johnson
John & Diana Atwood
Johnson
Mrs. Douglas N. Jones
Hope Juckel-Regan &
David J. Regan
Judith Kaan
Randie Kahl
Dr. & Mrs. David Kalayjian
Mr. & Mrs. Romi Kaminskas
Martha & Bill Kellow
J. David Kelsey
Pat & Bill Kenney
Mrs. Fred I. Kent, II
Solomon & Nancy Kerensky
John Kiker &
Daniel Hulseberg
Mr. & Mrs. Ted Kilbride
Nancy King
Ms. Patricia Kitchings
Karin & Ken Kline
Douglas Knight &
Susan Williams
Theodore Kowalski &
Philip Devine
Mrs. Evelyn Kropp
Ruud H. Bergmans &
Ann B. Lane
Shannon Lapierre
Mrs. Susan Larkin
Dr. & Mrs. Gerald J.
Lawrence
Jan & Gary Lehrman
Patricia A. Lenihan
Rebecca Lerud
Dr. & Mrs. Thomas Lesnik
Mr. & Mrs. Kenneth Levin
Georgie W. Lewis
Mrs. Carol LeWitt &
Bruce Josephy
Dr. Julie Liefeld & Family
Elaine Lifland
Mrs. Ginny Linburg
Lorraine Lincoln Lieberman
Mr. & Mrs. Thomas
Lombardi
David & Sandy Long

Mrs. Vincent J. Longo
Mr. Robert Lorenz
Ms. Bunnie Lubs
Jane & Townsend Ludington
Jake & Kathy Luhan
Mr. James Lyon
Edward & Diane Lyons
Dr. & Mrs. John Madsen
Bruce & Kathryn Magown
David & Cynthia Manke
Patricia Marinone
Barbara Marks
Margot & Paul Maroni
Fred & Marie Martin
Ms. Marybeth Marx
Henry & Joan May
Stuart & Lesley May
Dr. Elizabeth Mayer
Ms. Sylvia Sturgis
Alison McCall
Mr. Robert B. McCann
Tom & Joy McConnell
John & Karin McCormick
Foundation
Connie McIntyre &
Wayne Green
Dr. Timothy P. McLaughlin
Ms. Jean McLean
Marcia A. McLean &
Peter Lasusa, Jr.
Mrs. Timothy Mellon
Mr. & Mrs. Nicholas
Merola Jr.
Mr. & Mrs. Newton S.
Merrill
Robert & Françoise
Middleton
Richard & Catherine Millard
Mr. John L. Miller
Donald Millerbernd
Ms. Janet Minella-Didier
Mr. & Mrs. George Mitchell
Mr. & Mrs. Kieran Mooney
Mr. & Mrs. Clement C.
Moore II
Andy & Gail Morris
Rose Motola
Robert & Henrietta Mountz
Mary Muir
Sallie & Ted Mundy
Donna B. Munroe
Paula & Kenneth Munson
Mr. & Mrs. James B.
Murphy, II
Mrs. Marcia Murphy
Mrs. Victoria T. Murphy
Suzanne Murray
Ms. Shirley Murtha
Mr. & Mrs. Robert F. Myers
Soul Mountain Retreat
Mr. Paul Nelson
Grisha Nersesyan
David & Linda Nolf
Mr. James B. Noyes
Suzanne P. & Anthony M.
O'Connor
Nancy & Peter Oates
Eric G. & Kathy H. Olsen
Larry & Janet Olsen
Dee Osborn
Mr. & Mrs. John Osborne
Mr. & Mrs. Jack Ostroff
RADM & Mrs. John Padgett
Mrs. Phyllis Pallett-Hehn
Mrs. Frederick Parker
Mrs. Samuel Parkinson
Ms. E. Terry Parkinson
Dr. John Parnoff &
Ms. Monique Heller

Mr. & Mrs. Harris Parsons
Dr. & Mrs. Neil Pastel &
Family
Michael & Elena Patterson
Fred & Kathryn Pechar
Dolly Peress
Mr. Edward G. Perkins
Eleanor & John Perkins
Michael & Sandra Perks
Mr. & Mrs. Bruce Peterson
Mrs. Evelyn Peyton
Christine Picklo
Mary Ann & Fred Pleva
Mr. & Mrs. William A.
Pollard
Mrs. Ralph J. Polley
Jerome J. Pollitt & Susan B.
Matheson
Sally & Robert Porter
Michael & Kristen Powers
Mr. & Mrs. Robert W.
Pratt Jr.
Dr. & Mrs. David Primo
Catherine & Rick Puccio
Mrs. Weston C. Pullen, Jr.
Mr. & Mrs. Joseph Quaratella
Frank Racette
Virginia & Edward Raff
Meg Raftis & Stillman Brown
Mr. G. Remak Ramsay
Carolyn S. Reed
Alfred Reeser
Marilyn & Robert Regan
Robert Regan &
Florence Hanft
Mr. & Mrs. William F.
Reichenbach
Carolyn Reimers
Mr. & Mrs. Rennhard
Mrs. Eleanor Revill
James Reynolds
Mrs. Joseph Rhodes
Ms. Jean Richards
Alex Richardson &
Liddy Karter
Mrs. George Rickel
Mr. & Mrs. William C.
Ridgway, III
Mrs. Sali Riege
Mrs. Ruth R. Robins
Mr. & Mrs. Frank Roche
Christopher & Rosalind
Roosevelt
Mr. & Mrs. James E.
Rutledge
George & Joan Ryan
Patricia B. Ryan
Mr. & Mrs. Michael T.
Ryland
Claire Sauer
Faith Saume-Berges
Mr. & Mrs. Phillip Sayres
Ms. Judith Schaaf
Mrs. Peter Schavoir
Mrs. Robert M. Schneider
Toby Scott
Dr. & Mrs. Thomas P. Sculco
Linda Seifert
Thomas & Peggy Sheridan
Mr. & Mrs. Charles Shivery
Mr. & Mrs. Skip Sibley
Jonathan Silbert &
Mary McHale
Pamela & Bruce Simonds
Jane Siris & Peter Coombs
Janet & Brian Slater
Mr. & Mrs. Alex Smith
David & Kathleen Smith
Lon & Susan Smith

Renee & Tom Smith
Mr. & Mrs. Robert Smith Jr.
Ellen Smoller
Nancy & Bill Sneath
Julie Solz
Ms. Anita Soos
Mrs. Martha Soper
Wayne Southwick
Beverly Spink
Dr. & Mrs. L. Edwin Sproul
Andrea Stanton
Mary & Cliff Stehle
Pamela Stevens &
Tom Moriarty
Dr. & Mrs. Stubenbord
Jack & Laurie Sulger
Celine Sullivan
Mary Sullivan
Michael & Anna Switzer
Mr. Robert Taisey
Sally Taylor
Mrs. Ashton Tenney
Gay & Henry Thorn
Ms. Ellen Tillotson
Ms. Eve Todd
Ernest & Hazel Tracy
Mr. & Mrs. Robert W.
Trainer
Mr. & Mrs. Howard G.
Tuttle Jr.
Katie Tuttle & Bill Mulligan
Dr. Dean Uphoff &
Ann Uphoff
Holly Van Marx
Dr. Theodore VanItallie
Mrs. Judith Vitali
Susan von Reichenbach
Mr. & Mrs. Fred Wakeman
Mr. & Mrs. Russell W. Waldo
Lyn Gammill Walker &
Tyler Smith
Joan Wallace
Caroline & Milton J. Walters
Mr. & Mrs. John M.
Washburn, Jr.
Bruce & Beverly Watrous
Mr. & Mrs. David Weber
Mrs. Heide Weise
Mrs. Linda Welchman
James Welling
Dr. & Mrs. John R. Wells
Mr. & Mrs. Walter Welsh
Ms. Colleen Wetsel
Emily N. Wharton
Mr. & Mrs. Thomas
Whidden
Harry & Liz White
Mr. Nelson Holbrook White
Mrs. Joseph Whitley
Karin Forde Whittemore
Peter Wieschenberg &
Constance Wright
Priscilla Bollard Wilder
Janice Wiley
Mrs. Marilyn M. Wilkins
Sydney & Caroline Williams
Mr. & Mrs. Windatt
Mr. & Mrs. Thomas D. Wing
Mr. & Mrs. William G.
Winterer
Arlene & John Witmer
Mr. Daniel Woodhead III
Mr. & Mrs. Tom Woodhead
Robert Yaro
Ms. Lorraine Yurkewicz



Through March 1, 2016

The Museum's growing family of members helps to continue our tradition of public service to a broad and diverse community, inspiring thousands of children and adults each year.

BENEFACTORS

Mr.† & Mrs. † Thomas Archibald
 Frances C. Ashley
 Mr. Charles Bartlett†
 Mr. Andy Baxter & Carley Cunniff†
 Mr. & Mrs. Maxwell M. Belding
 Mrs. Ruth Belding†
 Mr. & Mrs. Rudolph F. Besier
 Mrs. Max F. Brevillier †
 Mary Broughton
 Mr. Phillip C. Broughton
 Mr. Fenton B. Brown†
 Mrs. John Crosby Brown†
 Mr. † & Mrs. † Howard D. Brundage
 Peter & Valerie Bulkeley
 Mr. & Mrs. Edward Carrier
 Mr. Peter G. Chapman
 Mr. Alphaeus P. Cole†
 Mr. Homer Crawford†
 Sara Twigg Crawford†
 Mr. & Mrs. David W. Dangremond
 Mr. Hugh DeHaven†
 Mr. Robert M. Del Gatto
 Mr. & Mrs. Douglas L. DuMond
 Mrs. George Page Ely†
 Mr. † & Mrs. † Edwin D. Etherington
 Mr. † & Mrs. † John C. Evans
 Emily Fisher & Evan Griswold
 Mr. † & Mrs. † Freeman Foote
 Mrs. E. Clayton Gengras†
 Mrs. Ely Griswold†
 Mrs. Matthew Griswold Sr. †
 Mr. † & Mrs. † W.E.S. Griswold Jr.
 Mr. & Mrs. Robert P. Gunn
 Mr. & Mrs. Vernon H. Haase
 Mrs. Frederick W. Hilles
 Mr. † & Mrs. John L. Hoffman
 Mr. & Mrs. John Horn
 Mr. & Mrs. Thomas H. Johnston
 Mr. † & Mrs. † Robert H. Kriebel
 Mr. & Mrs. Conrad J. Kronholm Jr.
 Dr. & Mrs. Gerald D. Laubach
 Mr. & Mrs. Lee Mergy
 Mr. & Mrs. Robert Missel
 Robert† & Sandy Mulligan
 Mrs. Carl Muschenheim†
 Mr. † & Mrs. † Jephson J. O'Connell
 Mr. Paul O'Connell
 Mrs. Alfred Renshaw†
 Mrs. Elvia Enders Richards†

Mr. & Mrs. John R. Robinson
 Carol & Steve Ross
 David & Betsy Sams
 Mr. & Mrs. Richard J. Schwartz
 Mr. † & Mrs. † Lelan F. Sillin Jr.
 Dr. & Mrs. Lelan F. Sillin
 Mr. † & Mrs. † Gregory Smith
 Mr. † & Mrs. † George B. Tatum
 Mr. † & Mrs. Paul E. Taylor Jr.
 Mr. & Mrs. Samuel Thorne Jr.
 Mrs. Hugh B. Vanderbilt†
 Mr. † & Mrs. † Wilson Wilde
 Mr. & Mrs. George J. Willauer
 Mr. † & Mrs. Ramsay Wilson
 Mr. † & Mrs. † Daniel Woodhead Jr.
 Mr. & Mrs. † George M. Yeager
 Mr. Henry M. Zachs

LIFE

Mrs. Margaret Atwood
 Mrs. Eleanor Hofmann Bishop
 Mrs. Pamela Brewster
 Ms. Nancy Brinley
 Jennifer & Mark Brock
 Mr. William Browning
 Drs. William Carley & Catherine Mackey
 Sandra & Arnold Chase
 Mr. Charles T. Clark
 Hyla & James L. Cohen
 Mr. David J. Cooksley
 Mrs. Dana S. Cooley
 Mr. & Mrs. Jeffrey Cooley
 Mr. Vincent J. Dowling, Jr.
 Mr. & Mrs. David G. Elkins
 Ms. Barbara Ford
 Dr. & Mrs. David F. Frankel
 Dr. Jeffrey Goldblatt
 Mr. & Mrs. William Grabe
 Ms. Alva Greenberg
 Mr. Matthew Griswold
 Mr. & Mrs. Charles J. Hamm
 Mrs. Theodore R. Hillhouse
 Mr. & Mrs. Charles Hinckley
 Mr. John R. Jakobson
 John & Diana Atwood
 Johnson
 Mrs. Benjamin Jones IV
 Mr. & Mrs. Chester W. Kitchings Jr.
 Mrs. Chester W. Kitchings Sr.
 Ms. Helen Kriebel
 Mrs. Isabel Leach
 Dr. & Mrs. William A. Lieber
 Mr. & Mrs. Richard Lightfoot
 Mr. & Mrs. Henry S. Louchheim
 Dr. Clark Marlor

Mrs. Timothy Mellon
 Mr. John M. Meyer
 Mr. & Mrs. Clement C. Moore II
 Mr. & Mrs. James B. Murphy, II
 Mr. & Mrs. William E. Phillips
 Mr. & Mrs. John W. Rafal
 Mr. & Mrs. William Boatner Reily, III
 Mrs. Eleanor Revill
 Mrs. Ruth R. Robins
 Mrs. David C. Sargent
 Mrs. Shelby Schavoir
 Mrs. Philip Schonberger
 Dr. & Mrs. Joseph P. Semple
 Dr. Wayne Southwick
 Mr. & Mrs. John Spratt
 Mr. & Mrs. John Steffian
 Mr. & Mrs. Daniel L. Stix
 Mr. & Mrs. Whitney A. Talcott
 Mr. & Mrs. Rhys F. Townsend
 Mr. & Mrs. William Blunt White
 Mr. & Mrs. William G. Winterer
 Mrs. Ward M. Woodhead
 Mrs. E. Lisk Wyckoff, Jr.

PRESIDENT'S CIRCLE

Anonymous
 Constance Mary Ayars
 Mr. Andy Baxter
 Mr. & Mrs. Richard Booth
 Jonathan & Deborah Butler
 Mr. & Mrs. James Childs
 Mr. Jonathan L. Cohen
 Spencer Davidson & Tula Telfair
 Mr. Vincent J. Dowling, Jr.
 Mr. & Mrs. Jeb N. Embree
 Mary Farrell and Dan Sullivan
 Mr. & Mrs. Frank Hamilton III
 Mr. & Mrs. Chuck Hinckley
 Paul & Linda Holt
 John & Karen Horn
 Karen Katen Foundation
 Mr. & Mrs. James Korst
 Ms. Helen Kriebel
 Mr. & Mrs. Larry J. Lawrence
 McHue Millhiser Trust
 Virginia & Tim Millhiser
 Roy & Deborah Moore
 Dr. & Mrs. John Niblack
 Mr. & Mrs. J. Geddes Parsons
 Bill Phillips & Barbara Smith
 George & Jane Rapport
 M. David Sherrill
 Joe & Clinton Standart
 Bob & Betsey Webster
 Mrs. Renee Wilson



From scherenschnitte to collage and everything in between, Art • Bar participants gather with friends to learn a new skill.

DIRECTOR'S CIRCLE

Jeff Andersen & Maureen McCabe
 Charles T. Clark
 Jeff & Betsey Cooley
 Eric & Monique Foster
 Wayne & Barbara Harms
 Joanna J. & Lee A. Jacobus
 Don & Sue Joffray
 Dr. & Mrs. Robert S. Martin
 Joanne E. Masin
 Mr. & Mrs. John Noyes
 Barbara & David Preston
 Jeff & Joan Priest
 Mr. & Mrs. John F. Pritchard
 Thomas A. & Georgina T. Russo
 Dr. & Mrs. Joseph P. Semple
 George & Cynthia Willauer
 The Zachs Family

LEADER

Mr. Hugh Barton
 Ms. Betty Challgren
 Ms. Judith Cotton
 Mr. John V. Frank
 Albert Glassenberg
 Jason Kemp & Kimball Robbins
 Mrs. Robert Klimek
 Nan and Mark Lvoff
 Mrs. Sali Riege
 Mr. & Mrs. Charles M. Royce
 Stephen & Lynne Wardlaw
 Dave & Reba Williams

PATRON

Truman & Elizabeth Bassett
 Mrs. Templeton Brown, Jr.
 John & Athana Catlett
 Cheryl Chase & Stuart Bear Family Foundation
 Rhoda & David T. Chase
 Frederick & Rebecca Crosby
 Mr. & Mrs. Peter Cummins
 Frank & Susan Cummiskey
 Mrs. Richard T. Cunniff
 Joan & Gerald Delmont Clarke
 Susan Ferguson
 Mr. & Mrs. Chad Floyd
 Richard & Jane D. Grant
 Peter & Kathy Griswold
 Malcolm & Janet Gross
 Mr. Daniel S. Hansen

Mr. Adlai Hardin Jr.
 Nancy Newcomb & John Hargraves
 Mr. & Mrs. Alastair Hunt
 J. David Kelsey
 John Kiker & Daniel Hulseberg
 Keith & Elaine Knowlton
 Kuehler Family
 Mrs. Laura Lofstad
 Mrs. F. Patrick McFadden
 Ketly Michel
 Mr. & Mrs. Kieran Mooney
 Margaret & Bob Patricelli
 Michael & Elena Patterson
 Mr. & Mrs. Stephen Percy
 The Rev. Canon Mark KJ & Eleanor Robinson
 Eliza & Matthew Sharp
 Ellen Smoller
 Thomas St. Louis & Mary Powell-St. Louis
 Kevin Thomas
 Carolyn Wakeman & Robert Tierney
 Caroline & Milton J. Walters
 Mr. & Mrs. Thomas Whidden
 Sydney & Caroline Williams
 Mr. Daniel Woodhead III

SUSTAINING

Dr. & Mrs. Whitney Addington
 Julie & James Alexandre
 David & Susan Wood Alpeter
 Kristina & John Antoniadis
 Dr. Paul Armond & Mr. Fred W. Harger
 Mr. & Mrs. Thomas Bagg
 Mr. & Mrs. Rowland Ballek
 Stephen & Susan Bates
 Mr. & Mrs. Michael Beaudette
 Tiffany Bell
 Mr. & Mrs. Bruce Bender
 Mr. & Mrs. Chapman Berry
 Mr. & Mrs. Charles R. Berry
 Gilbert Boro
 Terry & Deborah H.B. Borton
 Charles & Nicoll Brinley
 Michael Brown & Laurie Havanec
 Roger Brown
 Mr. & Mrs. Wim Budding



Some visitors arrive by water!

Mr. & Mrs. Nicholas
Cameron
Jonathan Carlisle &
Michele Schavoir
Susan & Thom Cartledge
Mr. & Mrs. Samuel W. Childs
Marylin Clarke
Mr. & Mrs. George Collins
Mr. Peter Cove &
Dr. Lee Bowes
Carol Curland &
Richard Colman
Betty Diamond &
Bruce Volpe
James & Laura Duncan
Peter & Jennifer Eio
Elizabeth & Anthony Enders
Barbara Erskine
Ms. Regina Chaney Evans
Mr. & Mrs. Charles Farrow
Eleanor E. Ferguson
Mr. & Mrs. William
Fitzgerald
John L. & Alison C. Forbis
Skip & Edie Gengras
Dr. & Mrs. William A.
Gillespie
Alan & Judy Goldbecker
Don & Doina Gonci
Susan Goodall &
Foster Tennant
Mr. & Mrs. Ernest C.
Goodrich
Mr. & Mrs. Edward Greene
Mr. & Mrs. Earl Greenho
Karen Hagberg
Mr. & Mrs. Frank Hall
Mr. & Mrs. Reese Harris III
Mr. & Mrs. David Hoffman
Ms. Lisa K. Holmes
Mr. & Mrs. George James
Dr. & Mrs. David Kalayjian
Diane Kaslow
Ms. Patricia Kitchings
Diane and Stanley Krieg
Jo Ann & James Kupiec
Mr. John T. Lansing
Shannon Lapierre
Mr. & Mrs. Leonardo
Mr. & Mrs. Kenneth Levin
Mr. & Mrs. S. Van Vliet
Lyman
Mr. & Mrs. Michael Maney
Margot & Paul Maroni
Nancy & Bill Marston
Natasha Mathias
Mr. & Mrs. James O.
Matschulat
Robert & Phyllis McCarron
Richard & Catherine Millard
Mr. & Mrs. Donald Miller

Laura Lee & Brian Bowes
Paul Nash & Tish Ferenbach
Mr. & Mrs. Robert W.
Pratt Jr.
Mr. & Mrs. Robert Pyne
Dean & Pamela Richlin
Christopher & Rosalind
Roosevelt
Mr. & Mrs. James E.
Rutledge
Craig & Pietrina Saxton
Dr. & Mrs. Thomas P. Sculco
John & Linda Sillin
Mr. & Mrs. Alex Smith
Damon & Patricia Smith
Capt. & Mrs. Frank
Wadsworth
Mary Waldron
James Welling
Dr. & Mrs. John R. Wells
Harry & Liz White
Mr. Nelson Holbrook White
Mrs. Joseph Whitley
Ms. Patricia Williams
Dr. & Mrs. John Willson
Mr. & Mrs. Thomas D. Wing
Melinda Wiswell

SUPPORTING

Sue & Ed Aberbach
Fran & Carol Adams
Gary & Ann Agasi
Linda Ahnert
Linda Allard
Cynthia Allyn
Mrs. Geraldine G. Andersen
Liz Archambault
Mr. & Mrs. Curtis E.
Askelson
Pamela & Roderick Atkins
Charlotte P. Barringer
Charles & Barbara Beal
Mr. & Mrs. Thomas Beers
Mr. & Mrs. Frank Behrendt
Gary & Frances Bennett
Mrs. Heather Bennett
Bill & Sharon Bergquist
Mr. & Mrs. David Birkic
Ann & Alan Blanchard
Mr. & Mrs. Franklin Bohlen
Jane & Ben Bourn
Carolyn Boyle
Mrs. Stanford Brainerd
Mr. & Mrs. Jeffrey H. Brewer
Mr. & Mrs. Donald Brigham
Melanie Brigockas &
Robert O'Connor
Mimi & James Brooks
Joan & Lyle Brundage
Susan Burns & Robert
Williams

Mr. Douglas Burton
Joan H. Butler
Mr. & Mrs. John Callan
Mr. & Mrs. S.E. Canaday
Mr. & Mrs. Paul Carroll
Mr. & Mrs. William Carter
Mike Casinghino & Connie
Casinghino
Jennifer & Christopher
Caulfield
Lynn H. Cherry
Jane Chesnutt & Mallory
Rintoul
Robert & Heather Ciosek
Mr. & Mrs. Herbert T.
Clark, III
Marshall Clark
Mr. & Mrs. Harwood B.
Comstock
Nancy Connell
Mrs. Susan Connors & Mr.
Anthony Lopez
Mrs. Carolyn Cook
Patricia & Wayne Coon
Mrs. Belton A. Copp
Kate & Richard Cordsen
Mary Anne Cox
Mr. & Mrs. Donald B. Craft
Mr. & Mrs. Alan Curtiss
Ms. Karen Dahle &
Ms. Sue Hessel
Mrs. Corinne Dailey
Barbara O. David
Mr. William Davis
George E. Davy
Mr. & Mrs. Nathaniel B. Day
Barbara Delmhorst
Mr. & Mrs. Rodney W.
Devine
Linda DiFazio
Jody & Abbe Dole
Ms. Nancy Downie
Julie & Bill Dunbar
Bob & Nancy Dunn
Mrs. Anne Edwards
Mr. & Mrs. Jared Edwards
Mr. Peter Eliel
Ms. Mel Ellis
Ruth & Peter Emblin
Constance Engelking
Jim & Isabelle English
Mr. & Mrs. Robert English
Melissa Fetter
Thomas Fitzpatrick &
Camille Chwalek
Mr. & Mrs. John R. Fix
Jane C. Flounders
Mr. & Mrs. Stephen Forbes
Susan Forster
Paulette & Lawrence Fox
Mr. & Mrs. John E. Friday Jr.
Earla K. Frisbie
Howard & Sandra Fromson
Janet Gans & Morton Loshier
Charles Giessen &
Olga Polyakova
Kim & Frank Gilhool
John & Maren Gillespie
Dr. Barbara Glista
Michael Golay & Julie Quinn
Cathy & Jim Golden
Ann Gray & Jim Royle
Timothy C. Griswold
Jim Hackney and
Scott Haight
Henry & Elizabeth Haff
Mr. & Mrs. Robert P. Haff
J. Nicholas and Julia Hahn
Dr. and Mrs. Hale
James & Stefanie Hall

Dr. & Mrs. Francis J.
Hamilton
Hildegard & Hunter
Hannum
Elizabeth T. Harbison
Brian Harra & Anne H. Hoy
Jane & Gregory Harris
Jeff & Marisa Hartmann
Roderic M. Hartung,
Architect
Mr. & Mrs. Mitchell
Heffernan
Mr. & Mrs. James S. Herman
Susan Hermanson
Mr. & Mrs. Hans Jurgen Hess
Mrs. Muriel Hinkle
Mr. J. Parker Huber
Mary Hughes
Dr. & Mrs. Allan Inglis
Eric Inzero
Andi & Stephen Jacobs
Barbara & Ray Jacobsen
Mr. & Mrs. James P. Jenkins
Dorothy Jensen
John & Emily Johl
Mr. & Mrs. Samuel Jones IV
Hope Juckel-Regan & David
J. Regan
Mrs. Amy Day Kahn
Richard & Catherine Kaplan
Leslie A. Kelly
Stephen Kendall
Mrs. Margaret Kenny
Mr. & Mrs. Ted Kilbride
John Kiss
Robert P. &
Constance D. Knauff
Mr. Frederick C. F. Knowlton
Cynthia L. Konney
Deborah Kotchen
Sandra Kozlowski
John & Lynn Krawski
Ted and Karen Kremer
Mr. & Mrs. Stephen Kuenkler
Ruud H. Bergmans &
Ann B. Lane
Mr. & Mrs. Henry N. Lee
Dr. & Mrs. Thomas Lesnik
Robert A. Levine
Mrs. Carol LeWitt &
Bruce Josephy
Elizabeth Lightfoot &
Nicholas Clements
Mr. & Mrs. Thomas
Lombardi
David & Sandy Long
Mary Kay Long & Dennis
Unites
Mrs. Vincent J. Longo
Mr. & Mrs. John Lord
Mr. Ernest Lord &
Ms. Suzanne Derry
Linda Loretz
Jane & Townsend Ludington
Ms. Patricia Luhan
Madeline Maginess
Mrs. Helen Maher
Diane Mallory
David and Cynthia Manke
George & Olga Manos
Barbara Marks
Mary Matthews Mermel
David & Linda May
Mr. & Mrs. George Mayer
John & Karin McCormick
Foundation
Ms. Phyllis McDowell
Dr. Timothy P. McLaughlin
Patricia J. McManus

Mr. & Mrs. Newton S.
Merrill
Ellen & Joel Miller
Lenore Milner
Alison C. Mitchell
Andy & Gail Morris
Mary Muir
Sallie & Ted Mundy
Ms. Jil Nelson
Mr. Paul Nelson
Bonnie Nuzum
Dee Osborn
Mr. & Mrs. Jack Ostroff
Mr. & Mrs. Harry Parker
Ms. E. Terry Parkinson
Eleanor & John Perkins
Judith Perkinson-Corbett
Lauren Petersen
Mrs. Philip Pfeil †
Mr. & Mrs. Platt
Clarissa H. Porter
Wendy & Gary Price
Tracey Quintin & Family
Daniel Rabinowitz & Ann
Thomas
David & Susan Rahr
Mr. G. Remak Ramsay
Mr. & Mrs. John Read
Ms. Janice M. Reed &
Mr. William O'Malley
Mr. & Mrs. Arthur
Reichenbach
Mr. & Mrs. William F.
Reichenbach
Carolyn Reimers
Mrs. Joseph Rhodes
David & Aimee Rhum
Mr. & Mrs. Mike Richardson
Mr. & Mrs. Frank Roche
Mary Russell
Kazuko Sagawa
Mr. & Mrs. Phillip Sayres
Ernie Schaefer
Mary Schroeder &
Cathy Spencer
Donald & Carol Schwartz
Mr. Andrew Sillin
Pamela & Bruce Simonds
Jane Siris & Peter Coombs
Janet & Brian Slater
Mrs. Elting H. Smith
Lon & Susan Smith
Mr. & Mrs. Roger Smith
Nancy & Bill Sneath
Emily Snow
Patricia Storace
Dr. & Mrs. Stubenbord
Mary Sullivan
Mr. Leonardo H. Suzio
Louis F. Tagliatela
Mr. & Mrs. Sprague
Theobald
Mr. & Mrs. John W. Thoman
Mr. Brett Thompson
Dr. & Mrs. David
Thompson, Jr.
Brian M. Timura, MD
Ernest & Hazel Tracy
Mr. & Mrs. Robert W.
Trainer
Nancy Turner
Mr. & Mrs. Howard G.
Tuttle Jr.
Nell Twining
Mr. & Mrs. Fred Wakeman
Mr. & Mrs. Russell W. Waldo
Lyn Gammill Walker &
Tyler Smith
Ann Watkins
Mrs. Patricia Watt

Mrs. Heide Weise
Mrs. Linda Welchman
Ms. Colleen Wessel
Denis Wickham
Charles T. & Anne P.
Wilmerding
Mr. & Mrs. Windatt
Stephen M. Wood
Mr. & Mrs. Kenneth
Woodcock
Mrs. George N. Woodworth
Mr. J. Melvin Woody
Susan Minot Woody
Mary-Jo Worthey Warren
Dr. & Mrs. Fred M.H.
Ziter, Jr.

FAMILY

Mr. & Mrs. Alan
Abrahamsson
Jennifer Ackerman
Mr. & Mrs. Michael Adair
Mr. & Mrs. Allen Adamczyk
Lisa Adams
Robert & Shirley Adams
Roger & Barbara Adams
Mary Addison
Ralph & Marlene Adkins
Mr. & Mrs. Anthony
Aeschliman
Agee Family
Rev. Thomas Ahern
Selma Ahmed &
James Goodman
Anna Albanis
Anne-Marie Alderman
Neal & Dorothy Alderman
Jane R. Aldieri
Don & C. Diane Allen
Heather Allen
Isabel Alonso &
Joseph Cermola
Dr. Luis & Sheila Alonso
Curtis & Jamie Alpha
The Alsback Family
David & Charlene Amacher
Mr. & Mrs. Bruce Anderson
Mr. & Mrs. Robert P.
Anderson, Jr.
Mr. & Mrs. Bruce Andrews
Mary Ann Coffey Andrews &
Louis Andrews
Thomas Angers &
Timothy VanDaff
Chandra Aquilina
James & Kristina
Archambault
Barbara Arelt
John & Rebecca Armstrong
Celeste Arrieta
Robert & Karen Askins
Mr. & Mrs. Irvin K. Atkinson
Gina Atwood
Mr. & Mrs. John Avery
The Baehr Family
Mr. & Mrs. David G. Baillie
Francis & Suzette Baird
Liz Baird
Mr. & Mrs. Sheldon Baker
Dr. & Mrs. Robert Ballard
Susan Ballek &
Imanol Echeverria
Nadinia R. Ballestrini
Mr. & Mrs. Sankar Banerji
William & Marsha Bansavage
Nina Barclay
Andrew Barker
Paul Barrett
Mark & Britt Barry

Mr. & Mrs. Peter Bass &
Family
Mr. & Mrs. Baughman
Bayer & Dumaine Household
John & Sue Beatty
Mr. & Mrs. James Bechtel
Nicole Belanger
Nancy Bell
Edwin Below
Mr. & Mrs. Raymond Belval
Mr. & Mrs. John Benda
Norm & Sally Bender &
Dorothy Moreau
Mr. & Mrs. Benjamin
Mr. Joseph Benkovitz
Mr. & Mrs. William Benner
Geri-Anne Benning
Brooks & Stephanie Bentz
Dr. & Mrs. Michael Betten
Alison Betts
Judith Betty
Mr. & Ms. John Biasuzzi
Mr. & Mrs. Gary Bieniewicz
Marian Bingham &
Ken McAdams
Chris Blackshaw
Mr. & Mrs. Robert C. Blake
Mary & Kwamena Blankson
Abby Block
Lary Bloom &
Suzanne Levine
Mr. & Mrs. Christopher
Blossom
Jack Blozy
Trix Bodde
Ms. Diana Boehning
Wayne Boettner &
Hildegard Wiss-Boettner
Craig & Amy Bonatti
Byron & Lisa Bond
Mr. & Mrs. Robert B. Boody
William & Sandra Borland
Shirley Boron & Eileen Furey
W. Dawn Boulanger
Bourne/Mall Family
Jane & Tom Boyd
Suzanne & Kevin Boyle
Mary & Alan Bradford
Mr. & Mrs. Wilson G.
Bradford
Christopher & Amy Brady
Mr. & Mrs. John Brady
Michael & Eloise Brady
Mr. & Mrs. Newton C.
Brainard, III
Dr. Irwin Braverman &
Marian Wexler
Adrienne & Andy Brennan
Lee & Anita Breslin
Sandra & Roger Breunig
Stephen & Alison Brinkmann
Peggy Britt & Louis King
Patti & Richard Broad
Victoria Brodaski
Mary Broderick
Linda Bronson
Ms. Lorraine M. Broom
Mr. & Mrs. Brown & Family
Dr. & Mrs. James Brown
Ms. Jo Ann Galat Brown
Mr. & Mrs. Meredith Brown
Sara Brown
Anthony Bruno & Susan
Jones
Patrick J. Bryan
Martha Bryenton &
Thomas F. Meade
Mr. & Mrs. Stephen Buccheri
William Budds
Mr. & Mrs. Robert Bunting

Janet & Alfreda Burblis
Jonathan & Leah Burdick
Christina Burke
David Burkholder &
Penelope Petts
Elizabeth & Steven Burnham
Walker Burns & Jenny Tate
Mr. & Mrs. Peter K. Burr
M.K. Busch & D. Picchioni
Thea Bussmann &
Eugene Kapusta
Mr. Richard Butt &
Ms. Pamela Clement
Rob Butterworth &
Laurie Giannotti
Mr. & Mrs. Robert G.
Buttinger
Carole Buttner
Ann Buttrick
Rolf & Joy Bylan
Mark Cabell and
Megan McMahon
Jane & Peter Cable
Mr. & Mrs. Hugh Caldara
Matthew and Carly Callahan
Cody Callihan
Kathy Calnen &
Michael McKinley
Pat & John Campion
Dr. & Mrs. I. L. Cantner, II
Matthew & Shaleighne
Cantner
Helen Cantrell &
John Heckman
Mr. Virgilio Cappiello
& Dorothea Buchholz
Cappiello
Martha Carbone
Dr. & Mrs. Cardinale
Dianne Caristo Gaynor
Ashby Carlisle
Mrs. Helen Carlson
H. Clay Carter
Mrs. Laura Cassidento
Mr. & Mr. Kevin Cassidy
Susan Castellan &
Michael Sarlin
Mr. & Mrs. Chris Cathcart
Cavalieri Family
Jane Cavanaugh &
Frank Santoro
Pat & John Cervone
Ms. JoAnna Chapin
Annie Chapman
Jamie, Samuel &
Alison Chapple
Diana Charnok
Helen & Bill Chatman
Andrea Chiappa
James & Patricia Chiarella
Ms. Margaret Chidley
Mr. & Mrs. Thomas Childs
William & Bobbie Chilton
Stanton Ching & Melissa
Behney
Katie Newell Chiodo &
Bob Platt
Mr. Leon Chmielewski
Catherine & John Christiano
Priscilla & Dan Christianson
Ms. Constance Christie
Leann Christie
Rosamund Christison
Jane Ciaccia
Holly Cini
Mr. & Mrs. Richard Claiborn
Jeanne K. Clark & Richard J.
Katucki
Mr. & Mrs. Nelson Clayton
Anne & Carl Clement

Mrs. Constance S.B. Cliffe, Jr.
Ellen Clinesmith
Bruce & Susan Clinton
Lynda Cmara
Mr. & Mrs. William J.
Cochran
Lisa & Thomas Coffey
Arnold Cohen &
Ann Molod
Merry N. Coleman
Constance Coles &
W.B. McKeown
Philip & Clio Coles
Francis A. Collins
Jack Collins & Kate Phelan
Ms. Linda M. Collins
Sharon Colvin
Bridget & Andrew Compagno
Mrs. Wanda Condict
Theresa Congdon
Jim & Jackie Connor
George & Susan Cook
Benjamin & Alexandra
Cooley
John & Nancy Cooney
Anthony & Ann Cooper
Wlter Corbiere &
Amanda Winters
Ellen Cordes & Harry Haskell
William & Jean Cotton
Brian & Patty Cournoyer
Mr. & Mrs. Courtemanche

Kristen Dahl
Janet & John Daley
Kristin Daley & Ian White
Donna Daniels &
Maia Ettinger
Rise E. Daniels
Dr. & Mrs. Demosthenes D.
Dasco
Denise Davies &
Joshua Smith
Kim & Anthony Davis
Laurie A. Deane
Charles Delinks &
Eva Cheshire
Diana & Peter DeLisa
Anna Dellermann
Ms. Cathy DeMeo &
Gregory Futoma
Clark Denslow &
Naomi Dempsey
Tess & John Deshefy-Longhi
Dana & Rick Devereux
Diana DeWolfe Carfi
Ms. Shirley Diamond
Kathy DiCenzo
Connie & Peter Dickinson
Sharon Didato
Barbara Dixon &
Joanne McGrath
Kenneth Dixon &
Lys Guillorn
Mr. & Mrs. John Doane, III



Peter Halley and his wife artist Ann Craven are joined by Jeff Andersen, Amy Kurtz Lansing, and Ben Colman at the opening of the exhibition, *Peter Halley: Big Paintings*.

Berry and Holly Cox
Mr. & Mrs. Ron Cozzolino
Mr. & Mrs. Robert Crane
Mr. & Mrs. Creighton
Mr. & Mrs. Critchett
Dennis & Christine Cronin
Mrs. Susan Cronin
Mr. Thomas Crow
Lis-el Crowley
Mr. & Mrs. Bruce Cummings
Denis & Linda Cunningham
Margaret M. Cunningham
Robin Cunningham
John & Kristin Curran
Beverly M. Curry
Rose Marie & Michael B.
Cushing
David Custodio
Mary & William Cutler
Bonnie Czyzowski
Mr. & Mrs. Samuel H.
D'Ambruoso
Paula Daddio & Terry
Utterback
Ramzi Dagher
Bill & Sandi Dahl

Jessica Dobratz &
Nick Gorra
Mr. & Mrs. Jonathan Dodd
Mary & Jon Dodd & family
Bradford B. Dolan &
Elena B. Dolan
William & Susan Dowling
Susan Dowling
Deborah Downie
Glenn Dreyer
Marie Duben
Emilia Dubicki &
Myriam Valderrama
Pat DuMond
Darlene Dunbar &
Carol Bozena
Mr. & Mrs. Kenneth Dunbar
Mr. & Mrs. Henry E.
Dunn, III
Susan & Ned Dunn, Jr.
Elizabeth Durham
Francesca & Robert Dussault
Mr. & Mrs. Bertrand
Duval-Arnould
Dorothy Eames &
William Abt

Mark & Lisa Edmiston
Harold & Ana Edmonds
Dr. & Mrs. Robert L. Edmonstone
Mr. & Mrs. Brian Ehrlich
Kirsten Eident
Epstein Family
Amy Erhart
Pam Erickson
Pam Erikson
Mr. Robley Evans
The Evermore Family
Margaret & Pierre Faber
Mr. & Mrs. Richard Fabricant
Katie Scarlett Faile
John & Angie Falstrom
Craig & Sara Fanning
Michele Farley
Mr. & Mrs. Edward P. Farman
Gerald E. Farrell Jr.
Carolyn Fast & Scott Brown
Mark & Deborah Faulkner
Yves Feder & Linda Skernick
Gretchen & Tony Federici
Mr. Ira Feinberg
Barbara Felie
Kellie Felkey
Dr. & Mrs. David Fenton
Dottie Ferguson
Albert & Elizabeth Fiacre
Patricia Fidler
Dr. & Mrs. Bryson Filbert
Peg & John Filloramo
Kate & Timothy Fioravanti
Mr. & Mrs. Robert Fisher
William & Diana Fiske
Elaine McNally Fitzpatrick & Laura Fitzpatrick-Nager
Mr. Thomas C. Flanigan
Arthur & Julia Fleischmann
James & Norma Fleishell
Ann & Michael Flinn
Mary Ellen & Ladd Flock
Kate Floravanti
Mr. & Mrs. Kenneth G. Flynn
Stephen, JoAnn & Christina Flynn
Mr. & Mrs. Foley
Judith Fontaine
Kathryn & Priscilla Forschler
Barbara-Jean Fortuna
Bruce T. Fox
Jim & Barb Francese
Jeanette Francini
James & Celia Francis
Allan Dodds Frank & Lilian M. King
Mr. & Mrs. David Frankel
Wayne & Suzanne Franklin
Mr. & Mrs. Edward S. Frese Jr.
Mr. Neil Fresk
Mr. & Mrs. James Friedman
Ms. Laurel Friedmann
Jill & Adam Fritzsche
Cathy & Curt Frost
Mr. & Mrs. John Frost
Frusztajer Family
Diane D. Fuller & Thomas Kenneally
Mr. & Mrs. Michael Furgueson
Mr. Roger Gagnon
Maureen Gallagher & Andrew Urban
Bevlynn Gallant
Donna Geary
George M. Geer, Jr. & Sharon Geer

Diana & Steve Gernhardt
Connie & Kelin Gersick
Mr. & Mrs. Peter W. Gerster
Mr. & Mrs. Mark W. Getchell
Mr. & Mrs. John Giaconia
Mr. & Mrs. Richard T. Gibbons
Andrew & Katherine Gibson
Wendy Gifford & Gerald Degenhardt
Mr. & Mrs. Patrick Gilbert
Mr. & Mrs. Gildersleeve
Col. & Mrs. Charles M. Gilman
David Gilmore
Mr. & Mrs. C.P. Gilmore
Michael Gilson & Lisa Beth Lupacchino-Gilson
Edna Gilstad
The Gingras Family
Athena Giovanis DO
Judith & Ernest Glantz
Sean & Christina Glavin
Dean & Laura Godown
Lara & Geoff Gohn
Golding-Pollack Family
Gerry & Roberta Goldstein
Jean Golicz
Mr. Ethan Goller & Ms. Rona Malakoff
Jennifer Goodine
John & Laurie Goodsell
Anonymous
Christina Gotowka
Elizabeth Gourlay & Matthew Griffiths
The Graf Family
Maureen & K. Lawrence Gragg
Mr. & Mrs. Alexander C. Graham, Jr.
Jerry Graham & Emily Moore
Frank & Lee Granger
Barbara Grant & Lisa Gauthier
Kimberly Grant
Thomas & Betsy Grant
Mrs. Constance Gray & Mr. George Leighton
Jeff & Heather Graybill
Timothée & Fred Graze
Stuart Greacen
Dolores Green
Paul & Phyllis Greenberg
Michael Greene & Julie Logan
Mr. & Mrs. Brian Greenho
Michael & Dorie Greenspan
Robert & Beverly Gregg
Mr. & Mrs. Andrew Gregor
Mr. & Mrs. Robert H. Gregory
Sandra & David Gregory
Anna & Joshua Grenier
Colleen & John Gresh
H. Kaye Griffin
Jim & Jane Griffin
Henry Griggs & Jill Abramson
Mr. & Mrs. Robert Grissom
Oliver Griswold
Mr. & Mrs. William H. Grover
Mr. & Mrs. C. Gruszcak
Mr. & Mrs. John Grzymkowski
Mr. & Mrs. Gerald Guild
Ariana & Andrew Gunn
Mr. & Mrs. John T. Guyol
Sarah Gworek
Molly Györog



2015 marked the 25th anniversary of Musical Masterworks. Initially started as a partnership with the Museum, it seemed fitting that the Midsummer Festival concert celebrate the group's milestone.

Barbara & Ted Hageman
Mr. & Mrs. Michael J. Halick
Carol Hall-Jordan
Mr. & Mrs. Richard P. Hall
Mr. Marvin Haltzer
Maria Hamel
Martina Hamilton & Robert Peterson
John E. & Joan Hamrick
Jim & Gail Hamsher
Stephanie & Dale Han
Mr. & Mrs. Parker D. Handy
The Hannum-Cardoni Family
Andrew Hansen & Kevin Smith
Mr. Frederick P. Hansen
Patricia & Michael Hargrove
David Harlow & Pauline Lord
Eleanor Harper
MaryJo Harrelson
Harrington Family
Michele Harrington
Amy Harris
Peter & Colette Harron
Mr. David Hart
Hartenstein Family
Patricia Hartman & Michele St. Marie
Jennifer Harvey
Joyce Harvey
Leslie Hawley
Rich Hayden & Karin Krochmal
Laura Haydon
Hayes Kalwat Family
Francois & Mary Haymann
Ron Heiferman & Judith Miller
Mr. & Ms. John Heiser
Susan & Lisa Hellen
Robert & Susan Hellier
Margie Helme-Brother
Kippie Helzel
Myron & Rita Hendel
Mr. & Mrs. David Henderson
Mr. & Mrs. Ted Hendrickson
Laurie & Rob Hernández
Jonathan Heuser & Nicola Cooney
Mary Lu Hickman
Taylor & Pam Hicks
Robert & Suzanne Higgins
Ms. Susan Hildebrand
Wendolyn Hill
Sarah & Jacob Himmelrich
Mr. Andrew Hinckley
Mrs. William Hincks
Michelle & Luke Hirst
Mr. Harvey Hoberman
Richard & Pat Holloway
Jackie Holtzman
Joan Hopper

Daryl & John Hornby
Mr. & Mrs. James Horton
Dr. & Mrs. William J. Hostnik
Elizabeth Housden & Nye Heron
Donald & Kandra Houston
Jay & Sandra Howard
Sharon & Alan Howell
Mr. & Mrs. Skip Hubbard
Mr. & Mrs. Stephen Huber
Amara Huckabone
Sousan Arafeh & Elsie Arafeh-Hudson
Mr. & Mrs. Walter Hufford
Kathleen T. Hunter
Sarah Hunter
Loisann & Bill Huntley
Mr. & Mrs. Donald Huppert
John Jay & Sally Huss
David Hutchinson & Panutda Suwannanonda
Sarah Hylas
Mary B. Hyson
Edward & Sandra Ianello
Christine & Carl Igelbrink
Peter & Susan Immordino
Mr. & Mrs. David Ingram
Melissa Irvine
Catherine D. Irwin
Jonathan Isleib & John M. Fay
Ms. Alexandra M. Isles
Joe & Marjorie Jackson
Jacqueline Jaffe & Rolf Wolfswinkel
Mr. & Mrs. Edward R. James
Raymond & Karen Jankowich
Megan Jeffery
Sandra Jeknavorian & Sean Langlais
Fritz Jellinghaus & Cynthia Glacken
Mr. & Mrs. Thomas Jennerwein
Jeff Jensen
Jill Jensen & Michael Foster
Emily & Harry Jewett
Susan & Jonathan Jewett
Gregory Johnson
Dr. & Mrs. Horton A. Johnson
Spencer & Jan Johnson
Dr. Lloyd & April-Ann Johnson
Amby & Ronald Jones
Rev. & Mrs. Steven Jungkeit & Family
Mr. & Mrs. Romi Kaminskas
Mr. & Mrs. Burt Kaplan
Mr. & Mrs. Peter Karpinski
David Kasman & Katy Coughlin
Debora Kaszuba-Neary

Ms. Pauline Kathe
Judith & Sheldon Kaufman
Bill & Paulette Kaufmann
Damian Keany
Ted & Noemi Kearns
Caroline Keenan
Pat & Paul Kelbaugh
Martha & Bill Kellow
Joshua & Nancy Kelly
Mr. & Mrs. David Kelsey
Elizabeth Kench
Mr. & Mrs. John Kennedy
Pat & Bill Kenney
John & Lesley Keogh
Mr. & Mrs. Thomas F. Keogh
Solomon & Nancy Kerensky
James L. Kerr & Helen Miller
Richele & Albert Kim
Anastasia King
Jennifer, Michael & Emma King
John & Lana King
Noreen Kirk
Maren Klawiter
Jane Klimczak
Barbara & Thomas Klin
Karin & Ken Kline
Daniel Knight
Douglas Knight & Susan Williams
Ann & Joseph Koletskey
Mr. Robert L. Kolwicz
Mr. & Mrs. John Kopchik
Lee Ann Kornacki
Renni & Richard W. Korsmeyer
Michael & Nancy Kozlik
Adriene Krefetz & Toby Krefetz Bowen
Dr. and Mrs. Peter Krenicky
Laura Kronholm
Sandy Kuhach & Peter Axilrod
Ellen & Gerald Kuroghlian
Madeline Kwasniewski & Thomas Donnelly
Gordon Kyle & Caroleen Frey
Gary & Susan Labovich
Amy Lachance Christman
Teresa & Doug LaFleur
Mr. & Mrs. John LaForce
Mr. & Mrs. Elwood Laforge
Lisa Lake & Annie Collier
Sharon Lamonakis
Mr. & Mrs. Frank Landrey
Bill & Barb Lavine
Dr. & Mrs. Gerald J. Lawrence
Maryann Leach
Mr. & Mrs. David Leake
Mr. & Mrs. Jon Leckerling
Sally Ann and Dylan Lee
Blake & Lois Lehr
Jan & Gary Lehrman
Gudrun LeLash & Harry Bird
Mark and Sara Lenhart
Lori & Edward Lenz
Garry & Nancy Leonard
Judy & Greg Leonard
Mr. Peter Levinson
George Lewis
Jane Lewis
The Lewis Family
Diane A. Libbey & H. Steven Zuckerman
Loren Lichtenstein
Ted & Dorita Lieberman
Dr. Julie Liefeld & Family
Susan & Jan Lindberg
Gabe & Lon Lipman
Maya & Stephen Liss

Dr. John Locke &
Dr. Cathy Flanagan
Melissa & Jane Logan
Samantha Lohen
Ms. Suzanne Lojzim
Allyson & William Long
Michael Long and
Elizabeth Nocera
Brenda Lowther
Mary & Dick Loyer
Jim & Holly Luce
Peter & Maureen Lutz
Margaret & Fred Lyle
Charlotte Lyman
Mr. & Mrs. Chuck Lynch
Kenneth Lynch &
Emily Talcott
Michael & Susan Lynch
Sally & Tim Lynch
Edward & Diane Lyons
Nancy MacBride
Marian Maccarone
Donald MacDermid
Mr. & Mrs. MacElwee
Lissa & Terrence Maclaren
Nora MacNamara
Diane & Michael Macris
Dr. & Mrs. John Madsen
Jan & Kristin Magnussen
Bruce & Kathryn Magown
Janet & Richard Mahoney
Karen & Andy Maines
Samuel Maller
Mammana Family
Betsy & Dane Manchester
Paul & Barbara Marden
Diane & Peter Mariani
Ms. Pamela Marks
Betsey & Chris Marshall
Mr. James R. Marshall, III
Mr. & Mrs. Jonathan
Marshall
Mr. & Mrs. Darryl Marth
Fred & Marie Martin
Pat Martin & Brad Turley
Glenn & Susan Martineau
Ms. Marybeth Marx
Cynthia & Frank Mason
Michele Mastrolillo
Andrea Masullo
John Matsikas & Jing Tong
Gerry Matthews
Sarah Maxim &
Noberto Nuranto
Henry & Joan May
Stuart & Lesley May
Dr. Elizabeth Mayer
Kelly Mayer
Blair & Pat McBeth
James McBurney
Mr. Robert B. McCann
Amy McCauley
Tom & Joy McConnell
Mr. & Mrs. Ronald
McCutcheon
Burr McDermott & Family
Adam and Gina McEwen
Mr. & Mrs. James McFarland
Daphne & Robert McGill
Diane McGinnis
Phyllis McGrath &
Pat Sheehan
Laurie McGuinness
Eileen & James McInerney
Connie McIntyre &
Wayne Green
Marion McKenzie & Judy
DeVey
Carol & John McKinney
Mr. & Mrs. Andrew McKirdy

Marcia A. McLean &
Peter Lasusa, Jr.
Donald & Jeanne McLellan
Betsy McManus
James & Carolann McNeish
David & Susan McNiff
Sheila McPharlin &
Walter Pierson
Mr. & Mrs. Fillmore
McPherson III
Jim & Judy McQuade
Jean-ellen McSharry &
Christopher Woerner
Anne Mehr
Richard & Anna-Marie
Melchreit
Mr. & Mrs. Carl Mellin
Tom & Sally Melvin
Aimee Menapace
Mr. & Mrs. Nicholas
Merola Jr.
Mrs. Josephine & Ms. Joy
Merrill
Elizabeth Meyer
Mr. & Mrs. Fred A. Meyer
Tom & Sue Mickus
Dr. & Mrs. Nancy & Jennifer
Middleton
Robert & Françoise
Middleton
Steve Aird & Cynthia Miller-
Aird
James Miller and
Regan Stacey
Mr. & Mrs. Richard Miller
Mr. & Mrs. Miller
Mr. & Mrs. George Mitchell
Nancy Mol
Dr. & Mrs. Peter M. Molloy
Tom & Audrey Monahan
Kathleen Mones
Kimberly Monson &
Michael Viera
Katy & Jeff Mooney
Dale T. & David Moore
Mr. & Mrs. George W. Moore
Stephen & Susan Moorhead
Ana Moreno & Ron Mason
Helen Morrison
Jonathan & Sue Ulintz
Mosovich
Robert & Henrietta Mountz
Marshall & Emily Mugge
Ms. Patricia Muggleston
Dr. & Mrs. Thomas
Muhlfelder
Paula & Kenneth Munson
Mr. & Mrs. Charles M.
Murphy, Jr.
Gay Myers & Lance Mayer
Mr. & Mrs. Robert F. Myers
Mr. Adam Tamsky &
Ms. Lisa Myerson
Michael & Dottie Nauer
Bill & Martha Neale
Deborah Neely
Michelle Neely &
Samuel Yates
Laura & Mark Nelson
Grisha Nersesyan
Mr. & Mrs. Jonathan
Nickerson
Mr. & Mrs. Robert Nielsen
Mr. & Mrs. Peter Niles
David & Linda Nolf
Stephen & Martha Norcia
Susan Norz
Margo Novak & Andy
Gifford
Paula Nowakowski &
Edward Walker

Robert & Ann Nye
Pat & John Nyikos
Casey O'Brien
Patricia & John O'Brien
Mr. & Mrs. Edward W.
O'Connor
Mr. & Mrs. Joseph O'Connor
Leslie & Art O'Connor
Suzanne P. & Anthony M.
O'Connor
Sabine O'Donnell
Michael & Elizabeth
O'Shaughnessy
Dr. Margaret O'Shea & Mr.
Daniel O'Shea
Nancy & Peter Oates
Elisabeth Oberg
Eric G. and Kathy H. Olsen
Larry & Janet Olsen
Shirley Onorato
Lana Orphanides
Frederick S. &
Judith B. Osborne
Matthew Osborne
Mr. & Mrs. John Osborne
Martin & Ruth Ouimet
RADM & Mrs. John Padgett
Mr. & Mrs. Albert Page
Mr. & Mrs. Charles H. Page
Cameron & Linda Paine
Debra Palladino
Allen & Rosemary Palmer
Andrea Pampalone & Ziggy
Miechnski Jr.
Debra Parcella
Mrs. Frederick Parker
Jon & Karen Parker
Dr. John Parnoff &
Ms. Monique Heller
Mr. & Mrs. Harris Parsons
Dr. & Mrs. Neil Pastel &
Family
Mr. & Mrs. Richard H.
Patterson
Robert and Kathleen
Patterson
Mr. & Mrs. Paulson
Mr. & Mrs. Francis J. Pavetti
Julia Pavone & Mark Dixon
Michaelle Pearson &
Jim Lampos
Fred & Kathryn Pechar
Ms. Ocean Pellett
Christian Peltenburg-
Brechtneff & Thomas
Lovejoy
Lori Pendleton
Mr. Edward G. Perkins
Mr. & Mrs. John Perkins
Julia Perkins & Brian Fay
Michael & Sandra Perks
Dr. & Mrs. Nicholas Perna
Mr. & Mrs. Paul Perreten
Rose Petersen & Brian Lowry
Mr. & Mrs. Bruce Peterson
Elaine Peterson
Whitney Peterson
Phronsie Petrow
Mr. Arthur Phelan
Mark & Maryellen Phelan
Mr. & Mrs. Gary Phelps
Marlu Picardi
Anne Picciano & Bob Pinger
Christine Picklo
Dr. & Mrs. Edward F. Pinn
Mary Ann & Fred Pleva
Geraldine Pliska
Dr. & Mrs. Benjamin
Podurgiel
Mr. & Mrs. Alan Poirier

Mr. & Mrs. William A.
Pollard
Jerome J. Pollitt & Susan B.
Matheson
Elizabeth Popinchalk
Mrs. Mary Katherine Porter
Amy & Glenn Porterfield
Mary Vallas Posner
Anthony Posteraro
Anne and John Potter
Ellen & Howard Potter
Mr. & Mrs. Norman Pratt
Dr. & Mrs. David Primo
Linda Priskorn &
Richard McClurg
Chris & Sally Pritchard
Alan & Bettie Proctor
Ronald & Wendy Proto
Mr. George M. Pruitt III
Catherine & Rick Puccio
Mr. & Mrs. Paul Puddington
Mr. & Mrs. Joseph Quaratella
Leslie H. Quarrier &
Peter G. Amos
Don & Charlotte Quigley
Mr. & Mrs. Samuel Quigley
John & Georgette Quilter
Raymond Quinlan
Ms. Deborah Quinn-Munson
James Quinn & Chris Zhang
James Quinn &
Joan Richards
Theodore & Nancy Raczka
Virginia & Edward Raff
Meg Raftis & Stillman Brown
John & Susan Rathgeber
E. Beatty & Maurice
Raymond
Jean & Donald Read
Dr. & Mrs. William J. Reagan
Denyse & Paul Redington
Mr. Daniel P. Reed
Erika Reen
Elizabeth Regal
Richard & Mary Margaret
Regan
Marilyn & Robert Regan
Robert Regan &
Florence Hanft
Karen C. Reich
Linda Reid
Karen & Brigg Reilley
Ruth & Charles Reluga
Paula Remmers
Mr. and Mrs. Chet Reneson
Lisa & Aaron Reneson
Mr. & Mrs. Rennhard
Mr. & Mrs. Bill Revill
Ms. Jean Richards
Alex Richardson &
Liddy Karter
Richard Riddell &
Carol Taylor
Mr. & Mrs. William C.
Ridgway, III
Mr. & Mrs. Eugene Riotte, Jr.
Pat Rist & Joe Brown
Sally & Jim Ritchie
Carin Roadset
Clare & Patrick Robert
Mr. Alec Robertson &
Judy Makrianes
Charlie Robertson &
Kristen Becher
James & Christine Robertson
Robert Robillard & Addison
Van Ness
Joan Rice Robinson &
Noah James Rice
Brian & Carol Rogers
Ms. Diana Rogers

Patrick Romano
Margaret Rose
Mr. & Mrs. Ken Rosen
Alexandra & Mark Rosenthal
Frani & Steven Ross
Mr. & Mrs. Richard Rousseau
Greg & Daneen Roth
Bettina Rowlands
Fran Rowlenson
Mr. & Mrs. Edmund
Rubacha
Mr. & Mrs. Damian Rubino
F. Lee Ruck
Sandra & Bill Rueb
Martha & Richard Rumskas
Runkle Family
Kristen Russo & Paul Battles
George & Joan Ryan
Mr. & Mrs. Michael T.
Ryland
Merrill, Brooke & Allan
Safferman
Sakharova Family
Guenther & Joan Salm
Hamilton & Delycia Salsich
Mr. & Mrs. A.L. Samaha
Lorraine & Margaret Samela
Adeline Sampara
Lauren Santos &
Ivan Cherniack
Jan Sauer
Ms. Judith Schaaf
Mr. & Mrs. Robert Schiffer
Mr. & Mrs. John M. Schloss
Bobbi Schmidt
Eleanor Schneider
Judith Schoonmaker
Jane Schulman
Nancy & Elias Schwam
Mr. Stephen Schwartz
John Schwolsky
Nancy & Richard Seager
Mr. & Mrs. Alfred Secondino
Kathryn Smith &
Andrew Seddon
Mr. & Mrs. H.D. Sedgwick
Dr. and Mrs. Seidner
Conrad, Beth & Emily Seifert
Joan L. Sepessy & William L.
Swartzbaugh
Therese Servas & Kim Nolan
Jan Sevieri
Mr. Allyn Seymour, Jr.
Mr. & Mrs. William Sharp
Art Sharron
Alla Shavnya
Charles I. Shaw III
Gail A. Shea & Thomas
Haggerty
Geoffrey Sheehan
Mr. & Mrs. Thomas C.
Sheffield Jr.
Eileen Shekosky
Bob & Charlotte Shepard
Thomas & Peggy Sheridan
Jim & Penny Sherrard
Shirley Sholes
Mr. Douglas Shomo
Mr. & Mrs. Richard Shriver
Mr. & Mrs. Skip Sibley
Mr. & Mrs. Jerry Silberberg
Jonathan Silbert &
Mary McHale
Mr. & Mrs. Wiliam B. Sillin
James & Janet Silver
Del & Pam Simmons
Mr. & Mrs. Brian Simpson
Britt Sinay & Robert Cooper
Mary Skelly
Slack Family
Richard & Eugenia Slone



Members of the Advisory Council met to discuss what acquiring the final piece of the original Griswold property could mean for the future of the Museum.

Allan F. Small &
Patrick McNamara
David Smalley
David & Kathleen Smith
Elaine & Peter Smith
H. Tenney Smith
Mr. Peter N. Smith
Renee & Tom Smith
Mr. & Mrs. Robert Smith Jr.
Mr. & Mrs. Seymour Smith
Mrs. Rose Garvey, Dr.
Michael Smyle &
Ms. Rosanne Smyle
Snitkin Family
Donald and Katherine Snook
Mr. & Mrs. Josh Snow
Julie Solz
Mr. David Somers
Mr. & Mrs. James Sommo Jr.
Robert Speed & Joanne Clark
Mr. & Mrs. Speirs
Clark & Cheryl Spencer
Jonathan Sproul
Dr. & Mrs. L. Edwin Sproul
Nicholas & Joan Squeglia
Mr. & Mrs. Robert Staab
William & Carmel Staplins
Mary & Cliff Stehle
Mrs. Letty Lee Stein
Paula Steinberg & Josh &
Laurie Kaufman
Christopher &
Rebecca Steiner
Lois & Donald Steinman
Janet Steinmayer
Brian & Ania Stephens
Mary Anne Stets
Barbara Stevens
Diane Stevens
Pamela Stevens &
Tom Moriarty
Michelle Stewart
The Reverends David &
Jane Stickney
Charles & Jeanne Stilp
Kathryn Stocking-Koza
Karen Stockton
Mr. & Mrs. Stockton
J. R. Stone
Peter & Elizabeth Storms
Christine Strick &
Kenneth Mahler
Jack & Laurie Sulger
Mr. & Mrs. Anthony Sullivan
Jean Sullivan
John Sullivan
Lori Sulmasy & family
John, Eunice &
Emma Sutphen

Kathleen & Brian Swann
Michael & Anna Switzer
Donna Sykes
Jennifer & Gregory Symonds
Symonds Family
Thomas Tafuri
Jan & Ted Taigen
Billie Beads
Sharon & Frank Tarala
Bette D. Taylor
Betty Lee Taylor & Richard
Bundy
Mr. & Mrs. Cameron Taylor
Craig & Karen Taylor
Rev. Robert & Judy Taylor
Drs. George &
Carol Lippia Tenney
Carol Terry
Shilpa Thakur
Dr. Susanna Thomas & Dr.
Stephen Castracane
Diane & Ray Thompson
Mr. & Mrs. Thompson
Patricia Thompson
Sarah Thompson Family
Suzanne & Brent Thompson
The Thoms Family
Mr. & Mrs. Michael
Thomson
Gay & Henry Thorn
Jason and Kristen Thornton
Katherine Thuma
Teresa & Larry Tiller
Gail Tomanelli and
Michael Shopenn
Dr. Laura Tordenti
Karen & Paul Torop
Richard J. & Sharon A.
Torrenti
Trainor-LeRoi Family
Brett & Meredith Trentham
Maureen & Robert Trostel
Kelly Trusilo
William & Gail Tubbs
Lina Tuck
Katie Tuttle & Bill Mulligan
Nel Udo & R. Casey
Sharon & Helmut Uldrikis
Hans and Barbara Ullstein
John & Cynthia Ulrich
Amy Unikewicz
Tom Sladek
Dr. Dean Uphoff &
Ann Uphoff
Gerald & Melissa Uram
Mr. & Mrs. George Valliere
Alice & Gary Van Deursen
Mr. & Mrs. James M.
Vanderkloot

Guy Vanpelt
Mr. & Mrs. James Vaughn
Eddie Vautrain
Linda Vegliante
Mr. & Mrs. Mark Velez
Kristin & Tom Vernon
Jimena Vignola
Roberta J. Vincent
Mr. & Mrs. John Vincze
Dennis Vitro &
Susan M. Vitro-Morse
Donald & Chrystal Vogt
Mary Buell Volk
Rita & Robert Volkmann
William Vollers
Gary & Pam Vollinger
Diane & Gary Volz
Susan Von Kohorn
Lynette Wacker
Judith Wadson
Mr. & Mrs. John Wagner
Mr. & Mrs. Walker
Dr. & Mrs. Milton Wallack
J Bryant Waller
Jean Walsh
Mr. & Mrs. Richard Walsh
Roxann Walters and
Barbara Long
Lorey Walz
Wanich Family
Mr. & Mrs. John M.
Washburn, Jr.
Robert & Joann Washburn
Mrs. Robert B. Wassung
John & Elizabeth Waterman
Michele & Jonathan Waters
Kathleen Watford
Lee & Mary Watkins
Bruce & Beverly Watrous
Irene Watson & Norman
Dupuis
Richard & Suzanne Watson
Eleonore M. Way
C. Diane Webb
Tina Ruppwebber &
Wendell Webber
Ann Weber
Mr. & Mrs. David Weber
Gary & Carol Weed
Charles & Shelley Wehrly
Nicole Weisbaum and
Katy Fisher
Judith & Joel Weisman
Mr. & Mrs. Walter Welsh
Wertheimer Family
Nicholas Westbrook &
Anne McCarty
Emily & Steven Westerberg
Shelley Wheeler-Carreiro
Mr. Sidney Whelan &
Ms. Patsy McCook
Ellen White
Frances S. White &
Harry B. Evans
Mr. & Mrs. Lawrence A.
White
Mary Ellen &
Elizabeth White
Mr. Richard White
John & Kay Whritner
Maryse & Pierre Wicker
Philip Schenck &
Maryalice Widness
Rose and David Wilbour
Mrs. Barbara Wilcox
Tom & Annie Wilcox
Elizabeth Wilds
Joan & John Wiles
Doug & Lucy Wilkinson
Eva & Steve Wilkinson

Lucius & Adela Wilmerding
John & Lynette Wilson
Steve & Kathy Wilson
Mary Wilson &
Jefferson Riley
Alberta & Elizabeth Wininger
Sandy Winslow
Arlene & John Witmer
Mr. & Mrs. Frank E.
Wolcott III
Martin Wolman & Nancy
Fischbach
Irene Woloszyn Lipchus &
J. Lipchus
Chuan Wong
Mr. & Mrs. D. Austin Wood
Tom Woodson
Jeanne M. Woolley
Claudia & Steven Workman
Mr. & Mrs. Vagn Worm
Richard Worth &
Karen Jeffers
Erin & Jessie Wraichette
Margaret Wrana
Douglas & Cynthia
Wrightsmen
Loretta Wrobel
Robert B. Wyllie & Beth M.
Sklar
Robert Yaro
Mr. & Mrs. Wick York
Diana H. Young
Jessica Zeedyk
Eileen & Scott Zelken
Mr. & Mrs. Carl H. Zinn, Jr.

INDIVIDUAL

Jane Acheson
Carol Adams
Ms. Dorothy Adkins
Mrs. Beverly Ahlers
Helen M. Aiello
Shannon Aiello
Lou Mae Albert
Virginia Aldrich
Kathryn Allen
Mrs. John Alsop
Carol Lavitt Altieri
Deborah Ames
Mrs. Judith Anderson
Ms. Kathryn Anderson
Lynn Anderson
Dorothy Anselmo
Dr. Roxandra Antoniadis
Kate April
Ms. Judith Archer
Elizabeth Ardolino
Ms. Ann Arnold
Catharine Arnold
Platt Arnold
Gloria M. Arons
Rev. John Ashe
Father Joseph Ashe
Ms. Jeanne R. Aspinwall
Evelyn Atreya
Elizabeth Attebery
Patricia Attoe
Sally H. Aubrey
Elizabeth Austin
Mr. George Avery
Mrs. Elias Babcock
Betty Bail
Ms. Mary Beth Baker
Sidat Balgobin
Bruce Baratz
Ms. Debera Barnes
Susan Rumney Barney
Charlotte Barnum
Mrs. Nile R. B. Barrett

Natalie Bartholet
Renee Bartowics
Mrs. Charles E. Baskett
Diane C. Bates
Marilyn R. Baumann
Martha Beaudoin
Mr. Charles S. Beebe
Johanna F. Behringer
Susan Bender
Jill Bennett
Mrs. Kathleen Bennett
Susan Benzyk
Ms. Carole Lee Berlin
Pamela Birmingham
Dr. Dale Bernardoni
Mrs. Terry Bernstein
Mrs. MJ Bertolini
Nina Besade
Mrs. Phyllis Bevington
Lisabeth Billingsley
Marjorie Bingham
Lydia Blacker
Mrs. Diana Blair
Joan Blatterman
Ann Bliss
Dr. Barry M. Bloom
Mr. Donald Blust
Jane Lassen Bobruff
Karen Bonitz
Susan Bonnar
Mary Boone
Lucy Borge
Jane P. Bouley
Mr. Patrick Bowen
Mrs. Richard W. Bowman
Mrs. Michael Bracken
Ms. Katie Bradford
Peter Brainard
Ms. Sandra Bramhall
Eileen Branciforte
Ms. Mary Reid Brash
Troy Bree
Mary Brodhead
Ms. Vivian Brooks
Holmes Brown
Mrs. Karen Brown
Ms. Linda B. Brown
Pauline Brown
Janet Buck-Marusov
Sylvia K. Buck
Irene M. Buckley
Norma Bucko
Richard V. W. Buel, Jr.
Josephine Bump
Virginia Bundonis
Barbara Burgess
Barbara Burke
Helen Burke
Mary Peirce Burke
Mollie Burton
Amy Cabaniss
Lori Caine
Dale Callaway
Audrey Cameron
Karen L. Camlet
Ann Camp
Maria Frese Campbell
Jennifer Carbone
Sharon Carlee
Alisa Carlson
Chloe Carlson
Margery Carlson
Bunny Carney
Sharan Carney
Jerry Caron
Ms. Betsy Carr
Ann F. Carroll
Charlene Carson
Elizabeth Carter
Brenda Cartmel

Claire O'Toole Cashman
 Katherine Catalano
 Mrs. Robert Caulfield
 Jennifer Cavallaro
 Ardean Cavalli
 Mr. Kenneth Cavanaugh
 Margaret Cawley
 Joanne Centola
 Chris Chamberlain Puffer
 Lindley Chapin-Sawyer
 Mrs. Judith Chapman
 Jane Chisholm
 Samara Christman
 Joanne Civitillo
 Miriam Clancy
 Carol H. Clark
 Mrs. Francis J. Clark
 Mrs. Virginia Clark
 Karen Clarke
 Ms. Kay Knight Clarke
 Constance Clement
 Mr. G. Roger Clements
 Mrs. Carole Clew-Hoey
 Richard Clippinger
 Ms. Barbara Coffin
 Jane M. Cohen
 Mary Colburn
 Blythe K. Colby
 Doris Coleman
 Mrs. Matilda Colihan
 Liz Collins
 Ms. Jan Royce Conant
 Mrs. Marta Cone
 Suzanne Connah
 Catherine Connell
 Clare D. Conover
 Alison Conrad
 Audrey Conrad
 Ms. Patricia Conrad
 Lois H. Constantine
 Mary Conway
 Mrs. Elizabeth Cook
 Chris Cooley
 Deborah Cooney
 Joan Corcoran
 Jean M. Corrao
 Lois Correia
 Mrs. John Cory
 Virginia Cottrell-Colassadro
 Lynn Coville
 Karen Cox
 Pamela Cronin
 Mrs. Claire E. Crosby
 Elizabeth W. Crowther
 Denise Cualoping
 Elizabeth Cumiskey
 Virginia C. Currie
 Roberta Curry
 Ms. Kathy Curtiss
 Mrs. R. Katherine Cushman
 Lucinda S. Cutler
 Sally D'Aquila
 Ms. Jane W. D'Arista
 Rosanne C. Daigneault
 Ms. Ellen M. Dalton
 June Danaher
 Mae Daub
 Jill Davidge
 The Rev. Patricia F. Davidson
 L.J. Davies
 Anne Davis
 Ethel F. Davis
 Kay Davis
 Mrs. Jane Davison
 Mr. Bill De Jonge
 Norma DeGrafft
 Ms. Jennifer Del Biondo
 Barbara S. Delaney
 Elizabeth A. Dempsey
 Ms. Meg Dempsey



Group tours aren't just for kids, each year alumni associations, museum groups, and other cultural travelers gather to tour the exhibitions, historic Florence Griswold House, and grounds.

Franca L. DeRosa
 Priscilla Derosier
 Joanne Deschler
 Patricia Cyr Devoe
 Ms. Cornelia W. Dickinson
 Ms. Jane Dickinson
 Mr. Richard Dillenbeck
 Victoria Dillingham
 Kate Dimancescu
 Shirley DiMauro
 Dr. Peter S. Dixon
 Valerie W. Dixon
 Jo Ann Dongweck
 Deborah Donovan
 Joanne Donovan
 Ms. Lisa Dragoli
 Ginger Druchyk
 Joanne DuBosque
 Carolyn Dugan
 Judith G. duPont
 Mrs. Lee Duran
 Linda Durie
 Mr. John Durkin
 Barbara H. Eberle
 Terry Eddy
 F. Fanny Eilers, Jr.
 Lucy Elliot
 Mrs. Arlene Elovich
 Mrs. Janet Eltinge
 Paula Emery
 Ann D. Erda
 Mary Erf
 Kenneth Evans
 Laurie Evans
 Leslie Evans
 Nancy Fairchild
 Jackie Farrer
 Ms. Shirley Feldmann
 Mrs. Ethel H. Feltham
 Ralf Feyl
 Mrs. Lory ffrench-Mullen
 Nancy Finch
 Dr. Frank Finley, Jr.
 Barbara Fitzsimmons
 Ms. Juana Flagg
 Margaret Flesher
 Lorraine Florio-Olson
 Michele Flowers
 Evelyn Fortier
 Mrs. Arlene Frank
 Carl Frano
 Nancy Friese
 Madelyn Frink
 Herbert Frisbie
 Justin Fritch
 Lori Fritzer
 Laura Frommer
 Mrs. Janet Funke

Geoff Furtney
 Sarah Gager
 Roxannah Gallagher
 Anne Gallant
 Joan Galliher
 Ms. Marcia Gardiner
 Miriam Gardner-From
 Anne Garland
 Nina Garrett
 Ms. Elise Garvin
 Sandy Garvin
 Mrs. Jeannette Gastil
 Elizabeth Gaynor
 Mary Gazda
 Susan Geist
 Rosemary Gentile
 Mr. Edward F. Gerber
 Terri Gershenson
 Margaret Gibson
 Rogene Gillmor
 Carol A. Giuliano
 Betsy Godzman
 Rosemary Goettsche
 Daniel Goldfisher
 Gerry Goldstein
 Pamela Gorman
 Dianne N. Gorrick
 Nancy Gould
 Ms. Mimi Gourlay
 Jan Grace
 Ms. Katherine Green
 Helen Greene
 Katrinka Greger
 Arminta Griffin
 Dr. Brigitte Griffith
 Deborah Griffith
 Ms. A. Julia Griswold
 Mrs. Judith Grosz
 Maryann Gryboski
 Ms. Rita Ellen Grygus
 Linda Guenard
 Mary Guitar
 Barbara M. Gustafson
 Mr. Elias Hage
 Mrs. Elizabeth Haigis
 Peter Halley Studio
 Gerry Hallgren
 Ms. Joan Handschumacher
 Joy Hanes
 Karen Hanscom
 Elizabeth Harkins
 Leah Hartman
 Elaine Houghton
 Mr. William Hayden
 Derek Hayn
 Nancy J. Healy
 Mrs. Liz Heard
 Barbara Helander

Ms. Kathleen Helmrich
 Ms. Hilary Heminway
 Lynda Hennigan
 Linda Henriques
 Barbara Heuer
 Gretchen G. Higgins
 Marcia Higgins
 Gretchen Highsmith
 Barbara M. Hilli
 Pam Himmelrich
 Kimberly Hodges
 Craig Holch
 Ms. Janice Holland
 Ashley Holmberg
 Margaret C. Holmberg
 Laura Hopkins
 Deborah Hornbake
 Jennifer Hornyak
 Mr. Robert Horwitz
 Renate L. Houchin
 Patricia Houser
 Patricia A. Hubbard
 Gail M. Hull
 Diane A. Hunt
 Mr. George F. Hunt Jr.
 Peter Hunt
 Teresa Hurlburt
 Deb Hurley
 Patricia Hurley
 Joan Hurworth
 Linda Improte
 Paula Jackson
 Ms. Mary Janvrin
 Mr. Graham K.L. Jeffrey
 Carol Jenik
 Barb Johnson Low
 Alexandra Johnson
 Mr. Clifford Johnson
 Jean U. Johnson
 Ms. Margaret Johnston
 Nancy Joly
 Jan Jones
 Susan Jones
 Cara Joseph
 Barbara E. Judge
 Mrs. Harriet B Juli
 Joanne Jurs
 Judith Kaan
 Barbara Kacicek
 Randie Kahrl
 Louise Kalin
 Amanda Kallenbach
 Sean Kane
 Ayla Kardestuncer
 Mr. Burton J. Karp
 Mr. John Kashanski
 Ms. Donna Toth Katan
 Ms. Mary Katsiaficas
 Ms. Linda S. Kauffman
 Sara Keaney
 John Kennedy
 Sandra Kensler
 Mrs. Fred I. Kent, II
 Sybil Kerrigan
 Nancy King
 Ms. Marilyn B. Kinzel
 Mrs. Mary Ann Kistner
 Jenny Kitsen
 Stephen Klinck
 Cheryl Kling
 Peggy L. Knets
 Irene Koenig
 Helga Kollegger
 Linnea Koster
 Lisa Krall
 Kathleen Krause
 Mrs. Evelyn Kropp
 Joell Kunath
 Marta Kurczab
 Liz Kurtz

Robert Kurtz
 Nancy Labrecque
 Joan Lackey
 Mrs. Carolyn Lally
 Ann Lander
 Catherine Langan
 Dianne Langlois
 Saren Langmann
 Mrs. Susan Larkin
 Mr. David Larson
 Mrs. Elin Larson
 Eunice Lasala
 Patricia Lavery
 Gladyce Lawrence
 Patricia Leach
 Susan Leahy
 Jean Lee
 Jennifer Hoffman Lee
 Katherine R. Leiser
 Patricia A. Lenihan
 Rebecca Lerud
 Mrs. Jean Leuchtenburg
 Mr. Herbert Levinsky
 Georgie W. Lewis
 Sharon Lewis
 Elaine Lifland
 Mrs. Ginny Linburg
 Lorraine Lincoln Lieberman
 Mrs. Caren Linden
 Mary Ellen Linderman
 Ms. Janet Speirs Littlefield
 Gale Loch
 Kathleen Lockwood
 Mr. Robert Lorenz
 Ms. Bunnie Lubs
 Karen Lungren
 Evani Lupinek
 Mrs. Kathryn P. Lynch
 Mr. James Lyon
 Mary MacGillis
 Mrs. Sandra MacGregor
 Mrs. Roland MacNichol
 Ellen Madere
 Christopher Magadini
 Teresa Magruder
 Sharyn Maher
 Robin Maillett
 Shirley H. Malcarne
 Mr. Donald M. Male
 Nancy Mann
 Ms. Jeanne Rovaldi Manning
 Nancy B. Manville
 Patricia Marinone
 Ms. Rosemary Markham
 Lilly Markons
 Mrs. Dolores Markowicz
 Janine Marshall
 Emily Martens
 Ruth Marti
 Mary Ellen Massey
 Ms. Patricia Massey
 Linda Mathre
 Donna Matulis
 Cheryl Maturo
 Mary Maynard
 Ms. Sylvia Sturgis
 Mrs. Lynn McCaffrey
 Alison McCall
 Barbara McCarthy
 Mr. William McCarthy
 Joanne McCarty
 Mrs. Marie McFarlin
 Signian McGeary
 Mrs. Elaine McGirr
 Joanne McGloin
 Patricia G. McGuire
 Jane Morse McLane
 Lisabeth McLean Haas
 Ms. Jean McLean
 Valnere McLean



Amy C. Wallace, Ph.D. Candidate in the Department of Art at the University of Toronto, does research in the Chauncey B. Stillman Study Center for her dissertation on artists' colonies in the United States and Canada, 1870–1930.

Nancy McLoughlin
Carol McMahon
Ms. Diantha McMorrow
Marilyn McShane-Levine
Carol Meade
Melissa Meredith
Paula A. Merrick
Ms. Mimi Merton
Lorraine Miles
Brenda Milkofsky
Elizabeth S. Millane
Dr. Donald Miller
Jane Ann Miller
Mr. John L. Miller
Julie Miller
Donald Millerbernd
Ms. Janet Minella-Didier
Janis Mink
Ilse Minkenberg
Anita Mokoid
Mrs. Richard A. Moll
Stephanie Moore
Diantha Morse
Dorothy Mosser
Rose Motola
Ann Mott
Ms. Melynda Mudgett
Jeanne Munnely
Donna B. Munroe
Mrs. Marcia Murphy
Mrs. Victoria T. Murphy
Suzanne Murray
Ms. Shirley Murtha
Lois Nadel
Laura Beth Neely
Jessica Neligon
Elaine Newgarden
Jeanne Nichols
Ms. Madeleine Nichols
Ms. Victoria Nott
Mrs. Elizabeth A. Noyes
Mr. James B. Noyes
Marguerite Noyes
Ms. Beverly Nuttall
Candace O'Brien
Ms. Constance O'Brien
Margaret B. O'Brien
Mrs. Barbara O'Connell
Mary S. O'Connor
Rebecca O'Donnell
Jan O'Sullivan
Mr. H. S. Oakley
Catherine Ogilvie
Rownie Okie
George Olshin
Mr. Dam Omohundro
Nan Ormeno
Ms. Dorothy Osborn

Raymond Padegenis
Janet Pagano Murphy
Anna Palchik
Mrs. Phyllis Pallett-Hehn
Loretta Palo
Mrs. Samuel Parkinson
Mr. Edward F. Parsells
Charlie Parsons
Jonathan Parsons
Joyce Pearson
Sandra Pearson
Lindamae Peck
Ms. Ethel Peltz
Alicia Pena
Ms. Chris Penniman
Dolly Peress
Sue Ellen Perry
Mrs. Honora H. Peterson
Susi F. Peterson
Mrs. Evelyn Peyton
Anne Phelan McCloskey
Margaret W. Phillips
Carole Pierce
Anne Bingham Pierson, MD
Betty Pinson
Maureen Plumleigh
The Rev. Dr. Wayne D.
Pokorny
Mrs. Ralph J. Polley
Mrs. Marcia W. Porter
Ms. Nancy Porter
Claudia Post
Mary Pottorff
Mrs. Albert Pratt
Carol Prendergast
Karen Prendergast
Mr. Ken Prescott
Jacqueline Princevalle
Kerry Prior
Ms. Patricia Proctor
Mrs. Robert Proctor
Ken Przybysz
Mrs. Weston C. Pullen, Jr.
Ms. Martha Purdy
Frank Racette
Betty Radicchi
David Rathbun
Barbara Reardon
Jacqueline Reardon
Mr. David Redfield
Carolyn S. Reed
Dorothy Reed
Alfred Reeser
Ms. Gay Reichart
Louise Reid
Carol K. Reynolds
Ms. Frances E. Reynolds
James Reynolds

Mr. Les Reynolds
Lisa Rhodes
Susan Rianhard
Gail Rich
Ms. Betty Richards
Lynn Richardson
Mr. Jonathan Rickard
Mrs. George Rickel
Wendy Afton Rieder
Mr. Michael Riggio
Mrs. Emily Minor Roberts
Mrs. W.A. Robins
David Robinson
Margaret Robinson
Lori Robishaw
Ms. Maureen Rodgers
Norma Rogin
Janice Rolfe
Katie Romeo
Barbara Rosenblum
Tricia Royston
Sandra Ruth
Patricia B. Ryan
Ms. Sarah Ryan
Alice W. Sailer
Ms. Nancy A. Salerno
Susan E. Saltus
Claire Sauer
Faith Saume-Berges
Aaron D. Schames
Nan Scheiber
Lisa Schickler
Gabiella P. Schlesinger
Rita M. Schmidt
Mrs. Robert M. Schneider
Katherine Schoonover
Betsy Schwammberger
Toby Scott
Bobbie Seebek
Linda Seifert
HS Seltzer
Jack Shackles Jr.
Angela Shenk
Mrs. Phyllis Shepard-Tambini
Mrs. E. Shepard-Wodell
Ms. Marian Shilstone
Csilla Shinkle
Patricia Shippee
Susan Shuell
Paul J. Sienkowski
Thomas Sievel
Susan Simler
Katherine Simmons
Anne Simpkinson
Priscilla A. Sisk
Andrea Skwarek
Sheilah Slattery
Betty Smith
Beverly Smith
Gertrude Smith
Mr. Raymond Smith
Fay Smolen
Penny Smyth
Michele Snitkin
Martha Snyder
Mr. Thomas Soboleski
Mary Lou Solomon
Millicent Solum
Ms. Anita Soos
Mrs. Martha Soper
Robin Soule
Joanne Sousa
Sandra Spahr
Barbara Spargo
Mrs. Donna R. Speirs
Michellie Speirs
Suzanne Spina
Beverly Spink
Ms. Donna Breen Stamm
Marie Stangel

Linda Stanley
Catherine Steel
Ms. Joanne B. Stevenson
Andrew Stevovich
Maria Stiefel
Julie Stone
Sally A. Stopka
M. Elsie Straube
Nicholas Streeter
Mrs. Leroy Strohla
Susan Struck
Ms. Janet Stulting
Mrs. Peter Stutts
Celine Sullivan
Wilma Sullivan
Mrs. Barbara Swec
Elizabeth Swenson
Ms. Ann-Marie Szerejko
Mr. Robert Taisey
Mr. John Talbott
Linda Talerico
Ms. Connie Tapper
Sally Taylor
Nancy W. Teolis
Pat Terry
Michael Theise
Terry Thibodeau
Maureen Thornton
Joan MacGregor Thorp
Ms. Ellen Tillotson
Mrs. Polly Timken
Carolyn Timmerman
Ms. Eve Todd
Susan Topping
Ms. Eleanor Toy
Barbara S. Traskos
Joyce Tucker
Ms. Michele Gill Tycz
Eleanor M. Umbehr
Margo Valentine
Lissa Van Dyke
Holly Van Marx
Dr. Eric Van Rooy
Mrs. Janet Van Wagenen
Dr. Theodore VanItallie
Jean Marie Veroneau
Frances Violante
Linda Visscher
Mrs. Judith Vitali
Susan von Reichenbach
Sheila Wacker
Catharine Wagner
Karen Waites
Mrs. Jean Walker
Mrs. Lynn Walker

Joan Wallace
Nancy Walsh
Charlotte Walters
Ms. Tina Waring
Melanie Watrous
Ms. Audrey Wayland
Ms. Jane Weinstein
Sheila Welling
Royal Werner
Ms. Sheila M. Wertheimer
Mrs. Eugenia West
Dr. Tina West
Cathy Weston
Emily N. Wharton
Patricia C. Whisker
Jane M. White
Mrs. Joanna White
Judith Whitehead
Mr. David Hale Whitlock
Judy Rathbun Whitney
Karin Forde Whittemore
Mrs. Mary T. Wibberley
Ms. Kristen Widham
Priscilla Bollard Wilder
Janice Wiley
Patricia Wiley
Mrs. Marilyn M. Wilkins
Jacqueline L. Williamson
Jeri Wilson
Margaret Wilson
Rosemarie Wilson
Kathy Jo L. Winters
Ms. Linda Winters
Peter Woerner
Stacie M. Wolf
Pam Woods
Betsy Woodward
Cicely Worrall
Rachel Yettick
Susan York
Ms. Lorraine Yurkewicz
Barbara Zabel
Ms. Anita Zacharis
Judith Zachs
Sowgol Zakarian
Andrea Zaletta
Heather Zavod
Joan Zawacki
Rosemarie Zbikowski
Eileen Zemetis Browne
Mrs. Roberta Ziegler
Caroline Zinsser
Susan Zirlen
David F. Zita, Ph.D.
Mrs. Barbara Zyla



It was an evening of altered book mania for this group of Girl Scouts.

BUSINESS PARTNERS

A Thyme to Cook, Inc.
 Alan Horwitz, Well Suited
 Alforno Trattoria
 All Pro Automotive
 Alpha-Aero Draperies, Inc.
 American Cruise Lines
 Andre Prost, Inc.
 Andrew Rubenoff: Design
 Andy's Deli & Market
 Archambault Insurance, Inc.
 Arne E. Ahlberg American
 Antique Furniture
 Art Emporium of Old
 Saybrook
 Arthur Murray Dance Studios
 Artisan Framing & Gallery
 Ashlawn Farm Coffee
 Astrid Couture &
 Ready to Wear
 B & L Construction, Inc.
 Baldwin Lawn Furniture
 Black Whale Antiques
 Bogaert Construction
 Company, Inc.
 Bouvier Insurance
 Bowerbird
 Brown Bear Creative
 Burnett's Landscaping, Inc.
 Caldwell Galleries/The Frame
 Shop on Wall Street
 Caliber Computing
 Captain Lord Mansion B&B
 Centerbrook Architects &
 Planners
 Chester Charter, Inc.
 Chester Gallery
 Chester Village West
 Chestnut Hill Concerts
 Christensen Landscape
 Services
 Christine Darnell Gardens
 CL Phillips Fine Furniture
 Clark Group
 Coastal Valley Veterinary
 Services, LLC
 Connected Systems, LLC
 Cooper & Smith Gallery
 Dagmar's Desserts
 David Chambers Painting
 Deep River Design
 Deep River Snacks
 Delamar Southport
 East Coast Trailers, LLC
 Eastern Tree Experts, LLC
 EFWatermelon
 Ekonk Hill Turkey Farm, LLC
 Elizabeth Arden Red Door Spa
 Elizabeth's Cafe & Perfect
 Parties Catering

Essence Center for Beauty &
 Wellness
 Essex Financial Services
 Essex Meadows
 Essex Savings Bank
 Eye Doctors Elgart, Pinn,
 Gordon & Yee
 Faces Aesthetics-Skincare
 Flanders Fish Market &
 Restaurant
 Frederick Bonsal
 Seggerman Selections
 Fromage Fine Foods &
 Coffees, LLC
 Garde Arts Center/Arts
 Alliance
 Garden Keeper
 Goodrich General Contracting
 & Hardscapes
 Gourmet Galley
 Grace Property
 Management, LLC
 Gull Associates
 Guy's Oil Service
 Hamburg Cove Endodontics
 Hammond Iles Wealth
 Advisors
 Hanes and Ruskin Appraisals
 & Antiques
 Hannah Childs Interior
 Design
 Hendels, Inc.
 Hirschl & Adler Galleries
 Infiltrator Water Technologies
 International Bicycle Tours
 Ivoryton Playhouse
 Jean Callan King Interior
 Design
 Jeffrey N. Mehler, CFP LLC
 Financial Planning
 Jonathan Edwards Winery
 Jonathan P. Butler AIA LLC
 Judge's Farm
 Julia Balfour LLC
 Kebabian's Oriental Rugs
 Kitchings & Potter, LLC
 Koffee Works
 Kronenberger & Sons
 Restoration, Inc.
 Lawrence & Memorial
 Hospital
 Laysville Center Hardware
 Learn & Play Christian Early
 Learning Center
 LEGO Systems, Inc.
 Lew The Plumber
 Lighthouse Signs
 Lomas Tree Service, LLC
 Lyme Art Association
 Lyme Shores Sports Club
 Madison Earth Care
 Middlesex Hospital

Mike Flynn Electric
 MJ McCabe Garden Design
 Morning Glory Café LLC
 Musical Masterworks, Inc.
 Mystic River Foundry, LLC.
 Mystic River Paintworks, LLC
 Natureworks
 New England Personnel of
 Hartford LLC
 New Haven Symphony
 Orchestra
 Niantic Plumbing
 Novak Brothers Landscaping
 Okemo Mountain Resort
 Old Lyme Inn
 Old Lyme Landscape
 P.L. Mountzoures Inc.
 Pasta Vita, Inc.
 Peter Emanuel/
 Jane Martineau Duo
 Pizza Works
 Polito & Associates, LLC
 Pough Interiors, LLC
 Reynolds' Garage & Marine
 Ring's End Lumber Co.
 River Tavern
 Rob Rivers, The Salon & Spa
 Root Yoga Studio
 Rota Portrait Design
 Ruth Hendel Productions
 Salon Pure
 Sapia Builders, LLC
 Saybrook Family Dental Care
 Scully Land Design, LLC
 Secor Auto Group
 Shore Discount Liquors
 Shoreline Eye Group
 Shoreline Web News, LLC
 Sicuranza Electric LLC
 Simply Pearls The Gallery
 and More
 SNS Electric LLC
 Spectrum Gallery & Store
 Star Computers
 Stonington Country Club
 Studio 33
 Sullivan Lawn Services
 Susan Powell Fine Art
 Taylor and Graham Fine Art
 TEC Landscape Design
 The Bee & Thistle Inn & Spa
 The Captain Daniel
 Packer Inne
 The Chocolate Shell
 The Cooley Gallery
 The Inn at Stonington
 The Merchants of Old Lyme
 Marketplace
 The Past Antiques
 Marketplace at Nature's Art
 Village

The Ritz-Carlton, Grand
 Cayman
 The Spa of Essex
 The Wall Street Gallery
 the-e-list
 Timothy Pamment Salon
 TNT Landscaping &
 Excavation, LLC
 Topside Canvas & Upholstery,
 Inc.
 Total Design Source LLC
 Traystman & Coric, LLC
 Treasures
 Union Gables Bed & Breakfast
 Mansion
 Van Wilgen's Garden Center
 Vitality Spa
 Webster Bank
 Weekapaug Inn
 Wertheimer & Associates
 Wilber & King
 William Pitt Sotheby's
 International Realty,
 Jennifer & Jane Associates
 Winter Associates, Auctioneers
 & Appraisers
 WSHU Public Radio Group
 Yankee Tree, LLC
 Yost Conservation
 Zelek Electric Co.

Fairfield Public Library
 Fairfield Woods Branch
 Library
 Farmington Library
 Goshen Public Library
 Greenwich Library
 Groton Public Library
 Guilford Free Library
 Hamden Public Library
 Henry Carter Hull Library
 Ivoryton Library Association
 James Blackstone
 Memorial Library
 Janet Carlson Calvert Library
 Jonathan Trumbull Library
 Killingworth Library
 Ledyard Public Libraries
 Lucy Robbins Welles Library
 Mystic Public Library
 Mansfield Public Library
 Meriden Public Library
 Middlebury Public Library
 Mystic & Noank Library
 North Haven Memorial
 Library
 Oliver Wolcott Library
 Phoebe Griffin Noyes Library
 Portland Library
 Prosser Public Library
 Public Library of New London
 Rathbun Free Memorial
 Library
 Rockville Public Library
 Russell Library
 Salem Free Public Library
 Saxton B. Little Free Library
 Simsbury Public Library
 South Windsor Public Library
 Stonington Free Library
 The Manchester Public
 Library
 The Norfolk Library
 The Westport Library
 Tolland Public Library
 Town of Weston Public
 Library
 Wallingford Public Library
 Waterford Public Library
 Welles Turner Memorial
 Library
 West Hartford Libraries
 Westbrook Public Library
 Westerly Public Library
 Wethersfield Public Library
 Wheeler Library
 Willimantic Public Library
 Willoughby Wallace Memorial
 Library

LIBRARY PARTNERS

Acton Public Library
 Atwater Memorial Library
 Avon Free Public Library
 Babcock Library
 Berlin Peck Memorial Library
 Bill Memorial Library
 Brainerd Memorial Library
 Canterbury Public Library
 Canton Public Library
 Case Memorial Library
 Chester Public Library
 Cora J. Belden Library
 Cragin Memorial Library
 Cromwell Belden Public
 Library
 Deep River Public Library
 Douglas Library of Hebron
 Durham Public Library
 E. C. Scranton Memorial
 Library
 East Granby Public Library
 East Haddam Free Public
 Library
 East Hampton Public Library
 East Lyme Public Library
 Edward Smith Library
 Essex Library



VOLUNTEER COMMITTEES

A heartfelt thanks to our dedicated volunteers whose boundless energy and talents keep the spirit of Miss Florence and the Lyme Art Colony alive.

VOLUNTEER LIAISON

Marilyn Percy

VOLUNTEER RECRUITMENT & PLACEMENT

Linda Ahnert

DOCENTS

Katherine Green, *Chair*

* Docent Council

** Docent Trainer

***Sue Aberbach

Beverly Ahlers

**Linda Ahnert

Rebecca Armstrong

Gina Atwood

Barbara Beal

Kathleen Bennett

Dale Bernardoni

**Deborah H.B. Borton

Corinne Brodie

Thea Bussmann

James Chiarella

Patricia Chiarella

Sharon Colvin

Carolyn Cook

Mary Ellen Cozzolino

Mary Anne Cox

Jane Critchett

Anne Czepiel

Sandi Dahl

Kathleen Davis

Deena Fabricant

Nancy Fairchild

Michele Flowers

Gerald Goldstein

Gerry Hallgren

Marcia Higgins

Gail Hull

*Loisann Huntley

Teresa Hurlburt

Sarah Iacobello



Every year volunteers give 7,000 hours of time and talent to the Museum in every department and we appreciate every minute.

*Patsy Kumekawa
Elin Larson
Gladys Lawrence
Patricia Lenihan
Lorraine Lincoln Lieberman
Teresa Magruder
**Olga Manos
**Margot Maroni
Carol McMahon
Therese Merola
Susan Missel
Jeanne Munnelly
Wendy Ihlstrom Nielsen
Patricia O'Brien
Patricia Osborne
Beverly Page
Ocean Pellett
Marilyn Percy
Rose Petersen
Mary Ann Pleva
Jean Read
Barbara Reardon
Lynn Riotte
Merrill Safferman
Kathleen Smith
Emily Snow
*Thomas Soboleski
Joan Squeglia
Mary Sullivan
Bette Taylor
Diane Thompson
Nel Udo
*Kathleen Valliere
Mallory Vanderkloot
Janet Van Wagenen
C. Diane Webb
*Priscilla Bollard Wilder

EDUCATORS

Rebecca Armstrong
Karen Bonitz
Jessica Dobratz
Deeana Fabricant
Patsy Kumekawa
Donald Male
Paul Marden
Caryn Mickle
Mary Sullivan
Nel Udo

GARDEN GANG

Sheila M. Wertheimer, *Chair*
Sue Aberbach
Platt Arnold
Barbara Beal
Terry Bernstein
Diana Blair
Jane Bourn
Sandra Bramhall
Nicoll Brinley
Helen Cantrell

Diana Charnok
Hyla Cohen
Teddi Curtiss
Anne Czepiel
Jane Dickinson
Susan Ferguson
Debbie Ferrer
Barbara Glista
Christina Gotowka
Katherine Green
Joan Henderson
Judith Kaan
Pauline Kathe
Karin Kline
Jane Ludington
Françoise Middleton
Jeanne Munnelly
Lois Nadel
Agnes O'Connor
Bobbie Padgett
Ann Parkinson
Sandy Perks
Margaret W. Phillips
Carolyn S. Reed
Leslie Shaffer
Emily Snow
Gay Thorn
Sandy Thurston
Marilyn Wilkins
Sally Worm
Mallory Vanderkloot

MAIL TEAM

Barbara Beal
Bunny Carney
Julie Dunbar
Shirley Flynn
Mrs. Theodore R. Hillhouse
Mrs. Elaine McGirr
Mrs. Jeanne Nichols
Mrs. Samuel Parkinson
Mrs. Barbara Preston
Emily Snow
Mary Sullivan
Mallory Vanderkloot
Mrs. Joseph Whitley

HOSPITALITY VOLUNTEERS

Gail M. Hull, *Chair*
Rebecca Armstrong
Sharon Colvin
Carolyn Cook
Deena Fabricant
Ms. Katherine Green
Gerry Hallgren
Mr. & Mrs. David Henderson
Donna Henderson
Marcia Higgins
Mr. Eugene Kapusta
Jan Lehrman

Edward & Diane Lyons
Robin Maillett
Olga Manos
Dorothy Mosser
Ocean Pellett
Rose Petersen
Maurice Raymond
Lisa Rhodes
Eleanor Robinson
Susan Shuell
Mr. Thomas Soboleski
Nicholas Squeglia
Ruth Tombari
Mrs. Heide Weise
Doug & Lucy Wilkinson

EDUCATION VOLUNTEERS

Audrey Spina
Hannah Wisner
Shannon Nosal
Caroline Wholean
Hannah Newton
Sophie Christiano
Michelle Shavnya

MUSEUM INTERNS

Courtney Long, University of Pittsburgh
Christine Castracane

CURATORIAL VOLUNTEERS

Charles Beal, Archives Coordinator
Christine Castracane
Anne Czepiel
Elizabeth Frankel
Joy Hanes
Hedy Korst
Courtney S. Long
Jonathan Rickard
Carolyn Wakeman, History Blog Editor
Rodi York

MARKETING VOLUNTEERS

Florence Betton
Christine Castracane
Julie & Bill Dunbar
Marcia & Jack Fix
John Porter †
Mary & Cliff Stehle

GARDEN LUNCHEON COMMITTEE

Dianne Embree, *Chair*

Deborah Butler
Elsie Childs
Andrea Inglis
Deborah Moore
Stephanie Moore
Lee Pritchard
Sandy Thurston
Betsey Webster
Sheila Wertheimer
Kathy Wilson

BLOOMS WITH A VIEW: FLORAL DESIGNERS

Co-Chairs
Alice Luster
Sheila Wertheimer

Floral Designers

Barbara Bruce
Betty Dykins
Martha Fanelli
Matthew Greene
Pamela Hamilton
Alice Luster
Duane Luster
Mary Lyons
Trish Manfredi
Lois Nadel
Lois Nichols
Terry Pfeil †
Kristine Urbanik
Sheila Wertheimer
Alice Willard

BENEFIT AUCTION STEERING COMMITTEE

Deborah Moore, Benefit *Chair*
Jennifer Eio, Auction *Co-chair*
Marie Martin, Auction *Co-chair*
Jennifer Wright, Auctioneer
Christie's New York
Dr. Paul Armond
Barbara Beal
Mary Ann Besier
Deetsie Bradford
Deborah Butler
Lori Caine
Adam C. Calkins
Susan Cartledge
Jeff & Betsey Cooley
Dianne Embree
Monique Foster
Liz Frankel
Connie Guild
Laurie Hernández
Tammy Hinckley
Hedy Korst
Cynthia Miller-Aird
Ed Parsells
Marilyn Percy
Dennis L. Pough
Lee Pritchard
Dyanne Rafal
Jane Rapport
Lisa Reneson
Lisa Rhodes
Eleanor Robinson
Andrew Rubenoff
Merrill Safferman
Judy Schoonmaker
Sandy Thurston

Kate Floravanti
Tammi Flynn
Bevlynn Gallant
Greg J. Grady
Steve Hansen
Carol Hall-Jordan
Marvin Haltzer
Amy Hannum
Sandra Jeknavorian
John Keogh
Lesley Keogh
Madeline Kwasniewski
Sharon Lamonakis
Sean Langlais
Sarah Layton
Edward Lenz
Lori Lenz
Betsy Marshall
Chris Marshall
Andrea Masullo
Laurie McGuinness
Nancy MacBride
Robert Nielsen
Liz O'Shaughnessy
Bobbie Padgett
Cheryl Poirier
David D.J. Rau
Lisa Reneson
Randy Robinson
Bettina Rowlands
Julie Solz
Christopher Steiner
Rhett Steiner
Kathryn Stocking-Koza
Jean Sullivan
John Sullivan
Billie Tannen
Kristen Thornton
Gay Thorn
Kristin Vernon
Tom Vernon
Bill Vollers
Jared Welcome
Jessica Zeedyk

WEE FAERIE QUEENS AND KINGS

Sue Aberbach
Rebecca Armstrong
Anne Czepiel
Michele Flowers
Kathi Green
Marcia Higgins
Olga Manos
Terry Merola
Lorraine Lieberman
Ocean Pellett
Maryann Pleva
Patricia Rau
Tom Soboleski
Kathy Valliere
Diane Webb
Priscilla Bollard Wilder

YOUNG PATRONS COMMITTEE

Courtney Becher
Kristen Becher
Brad Berry
Christine Castracane
Ali Cooley
Ben Cooley
Sam Dangremond
Jasper Goodrich
Heather Graybill
Jeff Graybill
Cody Layton
Sewell Robinson

MAGIC OF CHRISTMAS DESIGNERS & ARTISTS

Fantasy Tree Artists
Erica Edwards, ELLE, Chester
Patricia Spratt, Patricia Spratt for the Home, Old Lyme
Eileen Umba-Neuwinger, ELLE, Chester
Jayne Whittles, Chalk Mercantile, Old Saybrook

CHRISTMAS SHOP BUYERS

Lee Pritchard
Sandy Thurston

CHRISTMAS SHOP DECORATORS

Debra Butler
Elsie Childs
Anne Czepiel
Terry Eddy
Diane Embree
Susan Peterson
Betsey Webster
Kathy Wilson

EXTERIOR DESIGNERS

Sue Aberbach
Barbara Beale
Dee Dee Charnock
Christina Gotowka
Debbie Ferrer
Michelle Flowers
Karin Kline
Gay Thorn
Sandy Thurston
Sheila Wertheimer
Sally Worm

GRISWOLD HOUSE

Donna Carlson
Nicole Wholean

MARSHFIELD HOUSE

Matthew Greene

PALETTE ARTISTS

Gregory A. Bailey
David Bareford
Paula Billups
Katie Scarlett Faile
Russ Kramer
Gordon Kyle
Ingrid Lavoie
G. Remak Ramsay
William Sillin



BOARD OF TRUSTEES

2015-2016

OFFICERS

Frank W. (Ted) Hamilton, III, *President*
David W. Dangremond, *Vice President*
Jane Rapport, *Vice President*
Lee Jacobus, *Secretary*
Andy Baxter, *Treasurer*
Lee Pritchard, *Assistant Treasurer*
Marylin C. Clarke, *Counsel*

TRUSTEES

Deborah Butler
Hannah Childs
Anne Czepiel
Vincent J. Dowling
Dianne Embree
Monique Foster
Paul Holt
Karen Horn
Helen Kriebel
Sally Lawrence
Virginia Millhiser
Deborah Moore
John E. Noyes
Kathryn Parsons
Erica Tannen Semple
Clinton Standart
Carolyn Wakemann

CHARTER TRUSTEES

Mary Ann Rumney Besier
Charles T. Clark
Jeffrey W. Cooley
Hedy Korst
Marilyn Percy
Robert D. Webster
George J. Willauer

HONORARY TRUSTEES

Maxwell M. Belding
Richard Booth
Wilson G. Bradford
Elizabeth C. Chamberlain†
John C. Evans†
Clement C. Moore II
Marilyn Nelson
Dr. John Niblack
William E. Phillips
Eleanor Revill
Samuel Thorne
Nelson H. White

ADVISORY COUNCIL

Townsend Ludington, *Chair*
Tiffany Bell
Nancy Campbell
Stuart Feld
Donna Fleischer
Rob Hernández
James Lyon
James Matschulat
Harry S. Parker III
David Rahr
Robert Smith, Jr.
Dr. Christopher B. Steiner
Tula Telfair
Lyn Gammill Walker
Robert Wilber

STANDING COMMITTEES

Current as of March 22, 2016

Executive Committee

Frank W. (Ted) Hamilton, III, *Chair*
David Dangremond
Jane Rapport
Andy Baxter
Lee Pritchard
Lee Jacobus
Marylin Clarke

Building & Grounds

Lee Pritchard, *Chair*
Rudi Besier
Anne Czepiel
Martin Griswold
William Ridgway III
Sandy Thurston
Carolyn Wakeman
Shelia Wertheimer
Rob Wilber

Collections

David Dangremond, *Chair*
Mary Ann Besier
Jonathan D. Carlisle
Charles T. Clark
Vincent J. Dowling
Alva Greenberg
Hedy Korst
Helen Kriebel
Clement C. Moore II
Kathryn Parsons
Carolyn Wakeman
Robert Webster

Committee on Trustees

Deborah Butler, *Chair*
Mary Ann Besier
Jeffrey Cooley
Monique Foster
Carolyn Wakeman
Robert Webster
George Willauer

Development Committee

Jeffrey Cooley, *Chair*
Dianne Embree
Chuck Hinckley
Deborah Moore
Judith Schoonmaker
Barbara Smith
Clinton Standart

Investment Committee

Robert Webster, *Chair*
Andy Baxter
Paul Holt
Ann Lane
Newton S. Merrill
Rick Millard

Audit Committee (ad hoc)

Jonathan D. Carlisle, *Chair*
Dianne Embree
Frank W. (Ted) Hamilton, III
Karen Horn

Membership Committee

Jane Rapport, *Chair*
Thea Bussmann
Deborah Butler
Monique Foster
Gail Hull
Hope Juckel-Regan
Dorothy Mosser
Lisa Rhodes
Eleanor Robinson
Lisa Schickler
Joan Squeglia
Mallory Vanderkloot

Planning Committee

Kathryn Parsons, *Co-chair*
Charles T. Clark, *Co-chair*
Andy Baxter

Hannah Childs
Jeffrey Cooley
David Dangremond
Sally Lawrence
Curly Lieber
Townsend Ludington
John Noyes
Lee Pritchard
Robert Webster
George Willauer

Note: The President and Director are ex officio of all standing committees except the Committee on Trustees.

† Deceased



FLORENCE GRISWOLD MUSEUM

Home of American Impressionism

96 Lyme Stree Old Lyme, Connecticut 06371
FLORENCEGRISWOLDMUSEUM.ORG

Non-Profit Org.
US Postage
PAID
Permit #21
Old Saybrook, CT



CAFÉ FLO OPENS MAY 1 Anna Lathrop, Chef Terri Conderino, and Shannan McNair have been working hard this winter to freshen up Café Flo's menu and create inventive specials. They're looking forward to seeing everyone when Café Flo opens.

THE FLORENCE GRISWOLD MUSEUM

is a non-profit organization dedicated to fostering the understanding of American art, with emphasis on the art, history, and landscape of Connecticut. The Museum is located on thirteen acres from Florence Griswold's original estate and includes the Florence Griswold House, the Robert and Nancy Kriebel Gallery, the John and Kelly Bill Hartman Education Center, the John and Dyanne Rafal Landscape Center, the William Chadwick Studio, Marshfield, the Huntley-Brown House, a living landscape, and a collection of American paintings focusing on the art of Connecticut highlighted by the Hartford Steam Boiler Collection. Other collections include New England furniture, decorative arts, artifacts of everyday life, a reference library, and the Lyme Historical Society Archives. Education programs include exhibitions, lectures, trips, interpretive tours, youth Art Colony Camp, and publications. The Museum also owns the Catherine Fehrer House and property in Lyme. The Museum is accredited by the American Alliance of Museums.

STAFF

Jeffrey Andersen, *Director*
Donna Carlson, *Executive Assistant to the Director*
Shelby Chadwick, *Educator*
Fred Cote, *Director of Finance*
Tammi Flynn, *Director of Marketing*
Ted Gaffney, *Facilities Manager*
Joan Greene, *Visitor Relations Associate*
Matt Greene, *Manager of Visitor Relations*
Nathaniel Greene, *Membership Coordinator*
Therese Kus, *Business Manager*
Amy Kurtz Lansing, *Curator*
Sarah Layton, *Fundraising Office Coordinator*
Jennifer Stettler Parsons, *Assistant Curator*
Cheryl Poirier, *Marketing Associate*
David D.J. Rau, *Director of Education & Outreach*
Julie Garvin Riggs, *Museum Educator*
Randy Robinson, *Groundskeeper*
Kelsey Ross, *Visitor Relations Associate*
Janie Stanley, *Director of Development*
Nicole Wholean, *Registrar*

WEBSITE

FlorenceGriswoldMuseum.org

ADMISSION

\$10.00 for adults
\$9.00 for seniors (62+)
\$8.00 full-time students with I.D.
Children 12 and under are free

MUSEUM HOURS

Tuesday through Saturday, 10 a.m. to 5 p.m.,
Sunday, 1 p.m. to 5 p.m.
Chadwick Studio and Rafal Landscape
Center first Saturday in April through
October during Museum Hours

CAFÉ FLO

May 1 to October 30, Tuesdays through
Saturdays, 11:30 a.m. to 3 p.m., and
Sundays, 1 p.m. to 4 p.m.

OFFICE HOURS

Monday through Friday, 9 a.m. to 5 p.m.
Telephone: 860/434-5542
Fax: 860/434-9778

CLOSED

Mondays and New Year's Day, Easter, Fourth
of July, Thanksgiving, and Christmas Day

DIRECTIONS

Located in the heart of the historic district
of Old Lyme, Connecticut at 96 Lyme
Street at exit 70 off Interstate 95. Handicap
parking available.

MISSION STATEMENT

The mission of the Florence Griswold
Museum is to foster the understanding of
American Art, with emphasis on the art,
history, and landscape of Connecticut