

# A SENSE *of* PLACE

*34th Annual Benefit Auction & Dinner Dance*

FLORENCE GRISWOLD MUSEUM  
SATURDAY, SEPTEMBER 24th, 2016

|          |  |
|----------|--|
| 6:00 PM  | Cocktails & Silent Auction in the<br>Krieble Gallery       |
| 8:00 PM  | Silent Auction Closes, Seated Dinner<br>Under Festive Tent |
| 9:00 PM  | Live Auction & Dessert                                     |
| 9:30 PM  | Dancing to the Sounds of <i>Eight to the Bar</i>           |
| 10:15 PM | Pick up & Pay for Auction Items                            |

---

## SPONSORED BY

---





**INFILTRATOR®**  
water technologies

Protecting our Environment with  
**Reimagined Water Management Solutions**

***Congratulations  
On A Successful Remerger!***

***A proud supporter of the Florence Griswold Museum***

**Infiltrator Water Technologies**

4 Business Park Road, Old Saybrook, CT 06475

(800) 221-4436 • [www.infiltratorwater.com](http://www.infiltratorwater.com)



**BOUVIER**  
INSURANCE

Local Agents • Local Service • Local Savings

**Is proud to support the  
Florence Griswold Museum's  
Annual Benefit Auction**



**Visit One of Our 7 Locations**

**West Hartford      Uncasville      Westerly, RI  
Guilford      Stamford      Old Lyme      Simsbury**

**binsurance.com**

**800.357.2000**



*The Place to Go for Gourmet to Go*

## **HOURS:**

Monday-Friday 8-6

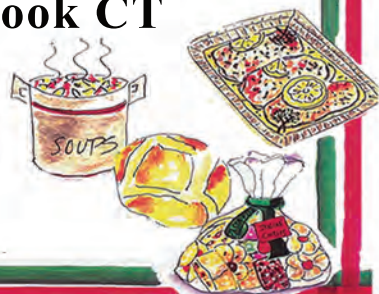
Saturday 8-5:30

Sunday 9-3

**860-395-1452**

[pastavita.com](http://pastavita.com)

**225 Elm Street  
Old Saybrook CT  
06475**



# A SENSE *of* PLACE

We celebrate the acquisition this year of the last private parcel of Florence Griswold's historic estate. A new chapter in the life of the Museum now begins, as we work to reunify the entire 13-acre riverfront property for the benefit of the public.

## SILENT AUCTION BIDDING INSTRUCTIONS

**Bidding will begin September 24, 2016, at 6:00 p.m.**

**EXPRESS CHECKOUT:** To avoid long lines at the end of the evening, please take advantage of our express checkout. Signing up is easy—look for the express check out table located in the lobby when you first arrive. At the end of the evening, proceed directly to pick-up and claim your auction items.

**BIDDING INCREMENTS:** To place bids, print your BID NUMBER and the amount of your bid on bid cards located near the auction items. The minimum bidding increments are:

| Value of Item | Bidding Increment |
|---------------|-------------------|
| Up to \$200   | \$25              |
| \$201-\$750   | \$50              |
| \$751-\$2,000 | \$100             |
| \$2,001+      | \$200             |

Proper bidding increments will be clearly posted on the bid board for each item. ***Bids that do not meet the required bidding increments will be disqualified.*** You may, of course, place bids higher than the minimum required increment.

**BID POSTING:** High bids will be posted at approximately 10:15 p.m. Successful high bidders may proceed to checkout and make payment.

**PICK UP & PAY:** Auction items may be picked up at 10:15 p.m. Saturday, or 11:00 a.m.–1:00 p.m. Sunday, unless special arrangements have been made. Please make payment at the admissions desk. Cash, personal checks, Visa, Mastercard, American Express, or Discover will be accepted. The purchaser will be responsible for transporting the auction item(s).

**CONDITIONS OF SALE:** All proceeds will benefit the Florence Griswold Museum. The Museum assumes no risk, liability, or responsibility for the authenticity of the authorship or any property identified in this program. All property is sold "as is." The Museum makes no representation or warranties, expressed or implied, as to whether the purchaser acquires any reproduction rights in the property. The Museum reserves the right to dispose of the property in any manner it deems appropriate if the successful bidder does not remove the property within the agreed period of time.

***All proceeds from this year's event will directly support the  
Museum's educational programs.***

Proud supporter of  
the Arts & Education



*Imagineers is pleased to sponsor the  
Florence Griswold Museum and their  
2016 Benefit Auction & Dinner Dance*

635 Farmington Avenue  
Hartford, CT 06105-2999  
860-768-3300  
Fax 860-236-3951

249 West Street  
Seymour, CT 06483-2650  
203-463-3200  
Fax 203-463-3299

[www.imagineersllc.com](http://www.imagineersllc.com)

# THANK YOU!

Sincere thanks to everyone who helped  
make our Benefit Auction such a success!

## Corporate Sponsors

Pasta Vita  
Imagineers, LLC  
Infiltrator Water Technologies  
Bouvier Insurance  
Webster Bank

## Benefit Chair

### Auctioneer

Wil Bradford

Deborah Moore

### Auction Chairs

Marie Martin  
Dyanne Rafal

## Standing Committee

Paul Armond  
Barbara Beal  
Mary Ann Besier  
Deetsie Bradford  
Deborah Butler  
Lori Caine  
Adam C. Calkins  
Susan Cartledge  
Christine Chesaneck  
Betsey Cooley  
Jeff Cooley

Dianne Embree  
Monique Foster  
Liz Frankel  
Connie Guild  
Dan Hansen  
Tammy Hinckley  
Andrea Inglis  
Diane Kaslow  
Hedy Korst  
Cynthia Miller-Aird  
Ed Parsells

Marilyn Percy  
Dennis L. Pough  
Lee Pritchard  
Jane Rapport  
Lisa Reneson  
Lisa Rhodes  
Andrew Rubenoff  
Judy Schoonmaker  
Sandy Thurston

## Special Thanks to

Art Emporium, Old Saybrook  
Artisan Framing & Gallery, Niantic  
Adam C. Calkins & Dennis L. Pough, Pough Interiors  
Lisa Reneson, invitation & program design  
Kelsey Ross, silent auction illustrations  
Andrew Rubenoff Design, lighting  
Shoreline Framing, LLC, Westbrook  
Studio 33, New London  
The Wall Street Gallery, Madison





## CENTERBROOK ARCHITECTS & PLANNERS

[www.centerbrook.com](http://www.centerbrook.com) (860) 767-0175



# AN OCCASSION *to celebrate*

We are your one stop rental shop, We have all you need for your summer parties and weddings. Give us a call or stop into our showroom today!

Contact us: 800.649.2055  
[chasecanopy.com](http://chasecanopy.com)  
[info@chasecanopy.com](mailto:info@chasecanopy.com)



  
**CHASE CANOPY**  
LUXURY TENTS | EVENT RENTALS



**Flavors  
You Crave!**  
*Ingredients You Know*



Proudly supporting  
the Florence Griswold Museum!

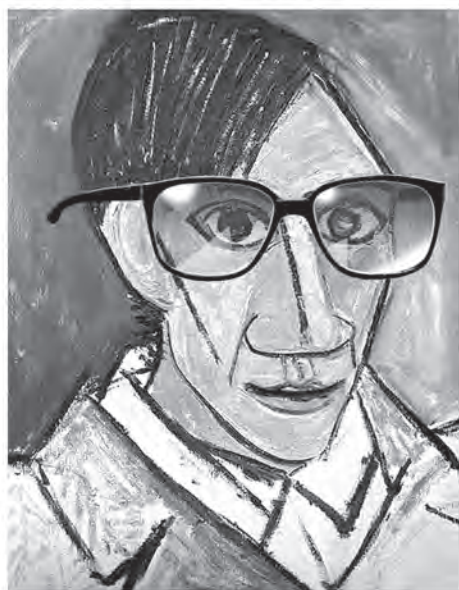


[deepriversnacks.com](http://deepriversnacks.com)



# eye DOCTORS

Elgart · Pinn · Gordon · Elgart  
OPTOMETRISTS



Adult & Pediatric Eye Care  
*most insurances accepted*

**860-388-2020**

Old Saybrook   Guilford   Deep River

STRATEGY • CONTENT • CREATIVE • CODE • MARKETING • SOCIAL

# WE LOVE PROBLEMS

*Call us with yours*

**JULIA**  
BALFOUR

*a full service creative agency*

*call (860) 577 - 0340 • email [info@juliabalfour.com](mailto:info@juliabalfour.com)*

**AN AWARD WINNING AGENCY**

**3 NORWICH ROAD, EAST HADDAM CT • [juliabalfour.com](http://juliabalfour.com)**



# Hannah Childs Interior Design

---

2 Sill Lane, Old Lyme, CT 06371

[info@hannahchildsinteriordesign.com](mailto:info@hannahchildsinteriordesign.com)

860.405.4394

# BEST WISHES

**Henry E. McGuire**

# BEST WISHES

**Robert M. Del Gatto**



# Jeffrey N. Mehler, CFP<sup>®</sup> LLC

---

*Financial Planning  
and  
Money Management*



147 Westbrook Road  
Essex CT 06426  
Telephone: 860-767-9700  
Fax: 860-767-9701  
Email: [jeff@jnmehler.com](mailto:jeff@jnmehler.com)

Fee  Only

**Proudly Supports:**

**The Florence Griswold Museum**

# GUY'S OIL

## SERVICE STATION INC.

- Fuel • Kerosene • Diesel
- Automatic Delivery
- Budget Plans/Discounts
- Pre-Pay Program
- 24 Hour Service
- Service Contracts
- Boiler & Furnace Installations
- Oil Tank Removal



LIC# B3 305555 HOD#154

**"WHERE SERVICE IS FIRST"**

**860.739.8700**

*Serving Southeastern Connecticut Since 1939  
A Family Owned & Operated Business*

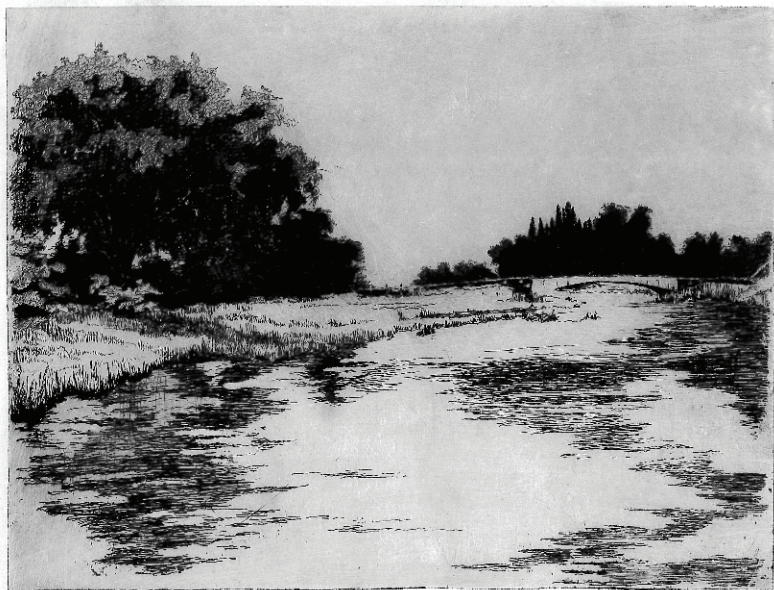


[www.guysoil.com](http://www.guysoil.com)



## THE COOLEY GALLERY

*Fine American Art*



Bertha Hurlbut Dougherty (b. 1883)

*Miss Florence's Shore*, etching on paper, 6" x 8"

*Founded in 1981 and located in the heart of historic Old Lyme, the gallery specializes in American art from the 19th, 20th, and 21st centuries including the Hudson River School, American Impressionism, and select contemporary artists.*

25 Lyme Street, Old Lyme, Connecticut ~ 860.434.8807

**[www.cooleygallery.com](http://www.cooleygallery.com)**

The Benefit Committee  
would like to thank the  
Auction Committee for all their  
hard work to make the

2016



BENEFIT AUCTION



A SENSE *of* PLACE  
*highly successful.*

We appreciate all that you do!



# WE ARE PROUD...

...to support the Florence Griswold Museum and its mission. Thank you for enhancing the arts in our community.

**LM** LAWRENCE  
+ MEMORIAL

LMHOSPITAL.ORG





# SECOR

## • AUTO GROUP •



Jeep

BUSINESS LINK



RAM

FIAT



**Secor Chrysler • Dodge • Jeep • RAM**  
409 Broad Street • New London, CT  
860-443-8335



**Secor Subaru**  
501 Broad Street • New London, CT  
860-442-2323



**Secor Mitsubishi • SAAB • Lotus**  
545 Broad Street • New London, CT  
860-442-3232



**Secor Volvo**  
575 Broad Street • New London, CT  
860-442-3232



### Our Idea Of Luxury...

## The All New Volvo XC 90

In stock and ready for immediate delivery

Largest Selection  
of new  
Volvo's  
in Eastern, CT!



  
*Congratulations*  
\_\_\_\_\_ *to the* \_\_\_\_\_

# Florence Griswold Museum



**Local. Tested. Trusted.**

860-535-4415  
MysticRiverPaintworks.com

*Interior & Exterior Painting*  
*Expert Wallpaper Installation*

---

CT License #573839 • RI License #22989 • Suffolk County License #33652-H • EPA Lead-Safe Certified Firm #NAT-39542-1



# café fl

by  
*Gourmet Galley*  
CATERING



Open till  
**OCTOBER**  
30<sup>th</sup>



## LOVELY RIVERFRONT DINING

Gourmet Galley is proud to partner  
with the Florence Griswold Museum.

For full menu visit [florencegriswoldmuseum.org](http://florencegriswoldmuseum.org)

Florence Griswold Museum | 96 Lyme Street, Old Lyme, CT

# TOGETHER.

## MAKING THE SMARTER CHOICE FOR CARE EVEN SMARTER.

### Middlesex Hospital Is CT's First Mayo Clinic Care Network Member

At Middlesex Hospital, we're excited to join the prestigious Mayo Clinic Care Network, an innovative health care network that connects our experts to the world's top specialists at Mayo Clinic. Now, we can work together like never before—collaborating on your behalf, sharing the latest lifesaving research and joining forces to resolve the most complex cases. So you get the peace of mind that comes with knowing the most advanced medical knowledge in the world is available right here in Middletown, Connecticut. It's all part of your experience at Middlesex Hospital—*The Smarter Choice for Care.*

[middlesexhospital.org/mayo](http://middlesexhospital.org/mayo)



# FARM FRESH. FOUR TIMES OVER.

**RIVER  
TAVERN**

Chester, CT  
[rivertavernrestaurant.com](http://rivertavernrestaurant.com)

**DINNERS  
AT THE  
FARM**

[dinersatthefarm.com](http://dinersatthefarm.com)

**OO  
OTTO  
OTTO  
OO**

Chester, CT  
[ottochester.com](http://ottochester.com)

**WRIGHT'S**

Centerbrook, CT  
[wrightssteak.com](http://wrightssteak.com)



# POUGH

I N T E R I O R S

*will help you find your own*

## SENSE *of* PLACE



*Artists on front steps of the Florence Griswold House  
— Circa 1903, Florence Griswold Museum*

One Main Street, Essex, CT 860.581.8344  
[poughinteriors.com](http://poughinteriors.com) | [info@poughinteriors.com](mailto:info@poughinteriors.com)

# LIVE AUCTION

## LOTS 1-6

Auctioneer Wil Bradford

### 1

Nelson H. White

*The Yellow Umbrella*

Value: \$6,000

Oil on canvas, 12 x 20 inches, 2016.

Nelson Holbrook White is the grandson of Lyme Art Colony artist Henry Cooke White. Inspired and instructed by his father and grandfather, Nelson decided to devote himself to painting. In 1955 he traveled to Florence, Italy, where he studied with famed painters Pietro Annigoni and Nerina Simi. He continues to work in the United States, Italy, France, Switzerland, and the Bahamas.

Nelson has exhibited his work throughout the world and is represented in numerous private and public collections, including the Florence Griswold Museum.

*Donated by the Artist*



Lot 1

### 2

Retreat to Telluride, Colorado

Value: \$5,000

Escape to the awe-inspiring and unforgettable scenery of Telluride, Colorado. Spend a week in a condo at the Ice House Lodge located in the center of Telluride near the restaurants and shopping area and just one block from the free gondola. Enjoy two bedrooms, two bathrooms, and a study with a pullout queen sofa, as well as a continental breakfast each morning and use of a pool, steam room, and hot tub. Available for seven nights during December 1-17, 2016; December 31 – January 9, 2017; or June 1-17, 2017, by mutual agreement.

*Donated by Carol Klimek*



Lot 2



3

Dinner at the Moores' Home

Value: UNIQUE!

Delectable dinner at the home of Benefit chair and Museum trustee Deborah Moore and her husband Roy for eight guests featuring high-end California wines from Roy's personal collection. This is sure to be a great evening of good food, wine and conversation. Date to be mutually agreed upon. Valid for one year.

*Donated by Deborah & Roy Moore*



Lot 3

4

Stay a Week in Italy!

Value: \$2,000

Travel to what has been called one of the most beautiful medieval towns of Tuscany—the village of Cetona in the province of Siena and stay in this stunning 2,700 sq. ft. apartment. The 2nd floor offers 3 bedrooms and 2 bathrooms with wonderful architectural details such as coffered ceilings, frescoed walls, and luxurious furnishings, blended with modern conveniences such as wi-fi, laptop, dishwasher, washer and dryer. A great room comprises the kitchen, dining, and living room with their original terracotta tiles and views onto the main piazza of Cetona. Everything you need is at your doorstep: restaurants, cafes, markets, and grocery stores selling local delicacies. Airfare not included. No pets or small children and non-smoking guests only, please. Time to be arranged by mutual agreement. A cleaning fee of \$200 is not included. Valid for one year.

*Donated by Philippa & Gaetano Mannino*



Lot 4

## 5

Four Tickets to Boston Red Sox vs. New York Yankees Game at Yankee Stadium

Value: PRICELESS!

Take in a Yankees v. Red Sox game early in the 2017 season at Yankee Stadium, the premier rivalry in professional sports. The package will include four Field MVP seats behind home plate. In addition, the package will include access to the Legend Suite Buffet, which offers one of the finest private dining experiences in NYC (along with a private bar, unlimited game snacks, a gelato bar, and a private entrance to the field), just off the main stadium concourse.

*Donated by Andy Baxter*



Lot 5

## 6

Cocktail Party at “Ted’s Tavern: Sail In - Swagger Out”

Value: PRICELESS!

Enjoy a cocktail party for ten in an 18th-century private pub within the beautiful Old Lyme home of the Museum’s Board President, Ted Hamilton and his wife Pamela. Ted will be your bartender and Pamela will serve delicious hors d’oeuvres, making for a magical evening! Valid for one year; date to be mutually agreed upon.

*Donated by Ted & Pamela Hamilton*



Lot 6





# RAISE YOUR BID

Immediately following the Live Auction, trustee Jeff Cooley will invite you to raise your bid paddle in support of a specific need of the Museum. In the past, Raise Your Bid has helped the Museum acquire significant funds for the purchase of a truck for the grounds, school field trip transportation, and the stewardship of the Museum's beloved historic landscape. By raising your bid paddle, you will be agreeing to donate \$100 (or more if you like) to an important cause. We hope you will participate and raise your bid paddle high!

*Thank you for your support.*

# SILENT AUCTION

Paintings, Prints & Drawings

LOTS 100-127

## 100

Judy Friday

*Garden #2*

Value: \$3,000

Opening bid: \$1,200

Minimum bidding increment: \$200

Sewn beads and ribbons, 20½ x 22 inches, 2010. Judy Friday is a prolific Lyme artist who turns her creative eye to many mediums. She studied at the Lyme Academy College of Fine Arts and with Robert Reed of Yale. Her work has been exhibited widely throughout New England and the Midwest.

*Donated by the Artist*

## 101

Gustave Cimiotti (1875-1969)

*Moonrise, New England*

Value: \$3,000

Opening bid: \$1,200

Minimum bidding increment: \$200

Oil on canvas, 16 x 20 inches, circa 1914. Gustave Cimiotti was born in New York in 1875, and raised in Verona, New Jersey. He studied at the Art Students League in New York and the Metropolitan School of Art under the instruction of Beckwith, Twachtman, Cox, and Weir. He exhibited at the National Academy of Design, the Pennsylvania Academy of the Fine Arts, and the Art Institute of Chicago.

*Donated by Peter and Henrietta Sherwin*



Lot 101

## 102

Ralf Feyl

*River Grass*

Value: \$2,800

Opening bid: \$1,100

Minimum bidding increment: \$200

Oil on board, 6 x 9 inches, 2015. Ralf Feyl studied with the respected Bill Parks at the American Academy of Art in Chicago. He then traveled East to study at the Lyme Academy College of Fine Arts and became deeply inspired by the mysterious borderlands of the New England coast and the people who inhabit it. The Cooley Gallery offered Feyl his first exhibition in 1992 and has shown his work there ever since.

*Donated by the Artist*



Lot 102

**103**

Kate Cordsen

*Ravine 7*

Value: \$2,200

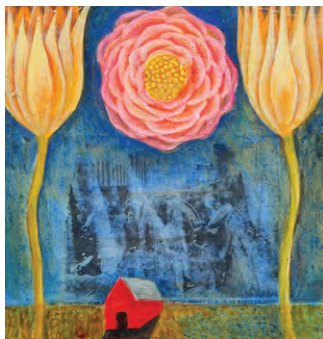
Opening bid: \$900

Minimum bidding increment: \$100

Chromogenic C-Print, 20 x 25 inches, 2013.

Kate Cordsen is an American photographer known for large scale minimalist landscapes. She received a BA in the History of Art and East Asian Studies from Washington & Lee University, an MPP from Georgetown University, studied Chinese and Japanese art history at Harvard University, and photography at the International Center of Photography. Kate is one of the featured photographers of the Museum's upcoming *In Place: Contemporary Photographers Envision a Museum* exhibition, on view October 1, 2016 – January 27, 2017.

*Donated by the Artist*



Lot 104

**104**

Julia Zanes

*Little Red House*

Value: \$1,800

Opening bid: \$700

Minimum bidding increment: \$100

Mixed media on board, 8 x 8 inches, 2015.

Julia Zanes attended The School of the Art Institute in Chicago. Her mixed media paintings read like fairy tales unfolding in complicated visual patterns and have been shown throughout New England, as well as in Canada, New Orleans, and Chicago. She has been exhibiting at the Clark Gallery in Lincoln, Massachusetts since 1991.

*Donated by the Artist*

**105**

Noel Quinn (1915-1993)

*Easy Street, Nantucket Island, MA*

Value: \$1,675

Opening bid: \$600

Minimum bidding increment: \$100

Watercolor, 20 x 24½ inches. After graduating from the Rhode Island School of Design in 1936, Quinn received a fellowship to do post graduate studies in France and Italy. He studied with Andre L'Hote, a key teacher in the Cubist art movement and with Andre Cassandre. His style features bold patterns, bright colors and geometric abstractions based on cubist ideas. He sold work through galleries in Paris, New York and Los Angeles.

*Donated by Anonymous Donor*

*Framing donated by The Wall Street Gallery, Madison, CT*



Lot 105



Lot 106

### 106

Maureen McCabe

*Pele and the Rescuing Nymphs*

Value: \$1,500

Opening bid: \$600

Minimum bidding increment: \$100

Mixed media on board, 6 x 8 x 1½ inches, 2016. Maureen McCabe is a widely recognized artist who is known for her highly imaginative yet carefully composed box constructions. *Pele and the Rescuing Nymphs* offers an allegory of salvation from the wrath of Pele, the Hawaiian Goddess of Fire. With their protective powers, the nymphs, based on a painting by J.W. Waterhouse, come to the rescue with a golden life preserver and other talismans of safety and good fortune.

*Donated by the Artist*

### 107

Deborah Quinn-Munson

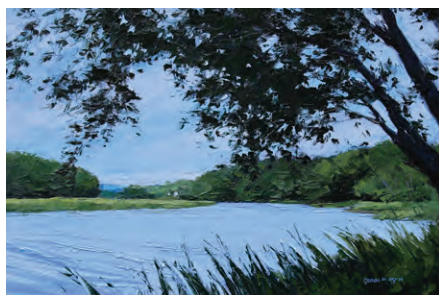
*Spring on the Lieutenant River*

Value: \$1,500

Opening bid: \$600

Minimum bidding increment: \$100

Oil on board, 16 x 23 inches, 2016. Deborah earned degrees in fine art at Wesleyan University and the University of New Hampshire. She also studied at deCordova Museum in Lincoln, MA and Lyme Academy College of Fine Arts. Her work is known for



Lot 107

its strong composition and energetic paint application combined with peaceful and serene views of the water and shoreline. Deborah has won numerous awards, and her work is included in many private and corporate collections throughout the country.

*Donated by the Artist*

### 108

George B. Burr (1876-1939)

*Suburban Back Yard, Spring*

Value: \$1,500

Opening bid: \$600

Minimum bidding increment: \$100

Watercolor, 16 x 19½ inches. George Burr studied at the Berlin Academy of Fine Arts, Munich Academy of Fine Arts, the Colarossi Academy in Paris with Whistler and the Art Students League in New York. He was a member of the Lyme Art Association, Salmagundi Club, and the Printmakers



Lot 108

Society of California. An early member of the Lyme Art Colony, his works are in many public and private collections, including the Florence Griswold Museum.

*Donated by Hedy & Jim Korst*

# 109

Jan Blencowe

*Summer Reverie*

Value: \$1,000

Opening bid: \$400

Minimum bidding increment: \$100

Acrylic, 13 x 17 inches. Jan Blencowe received her Bachelor of Fine Arts degree from Caldwell College in New Jersey. She is inspired by the landscape of New England and is dedicated to capturing and preserving the beauty of coastal waterways and inland farms and fields. Jan is a member of several professional art organizations and has been awarded numerous prizes. Her work can be found in numerous private collections in the United States and abroad.

*Donated by the Artist*



Lot 109



Lot 110

# 110

Del-Bourree Bach

*A Summer Day, Block Island*

Value: \$1,000

Opening bid: \$400

Minimum bidding increment: \$100

Acrylic on board, 7½ x 9½ inches. Del-Bourree Bach is a member of the American Society of Marine Artists and many other professional art organizations. His works have received numerous awards in competitions and have been featured in many publications. He is represented by The Maritime Gallery at Mystic Seaport, Courtyard Gallery in Mystic, and The Cooley Gallery in Old Lyme.

*Donated by the Artist*

# 111

James Goodwin McManus (1882-1958)

*Connecticut Landscape*

Value: \$850

Opening bid: \$350

Minimum bidding increment: \$100

Oil on board, 12 x 16 inches, 1947. McManus was born in Hartford in 1882. At sixteen, he started studying drawing under Charles Noel Flagg at the artist's studio in Hartford. After becoming an accomplished artist, McManus began teaching at Hartford Public



High School and later helped to found the Connecticut Academy of Fine Arts, where he also taught. He is considered one of the deans of Connecticut art, and his works are in many public and private collections.

*Donated by Barbara and David Preston*

# 112

Gigi Horr Liverant

*Autumn Forest*

Value: \$850

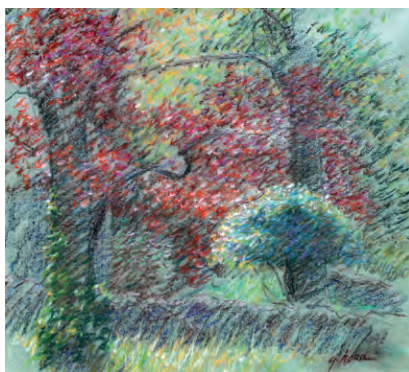
Opening bid: \$350

Minimum bidding increment: \$50

Pastel, 14½ x 13 inches. Gigi attended Paier College of Art in New Haven. She has been awarded numerous awards and honors, including First Prize Connecticut Women Artists and Best in Show Connecticut Pastel Society, as well as being awarded important national and regional commissions. Her works are in many private and public collections, including the Lyman Allyn Museum.

*Donated by Timothy & Ann McCann*

*Framing donated by Artisan Framing & Gallery, Niantic, CT*



Lot 112



Lot 113

# 113

Donna Levinstone

*Ocean Grid 1*

Value: \$850

Opening bid: \$350

Minimum bidding increment: \$50

Pastel, 10 x 10 inches, 2015. Donna Levinstone was born in New York in 1955 and is based in Long Island City. Her art education includes the State University of New York at Stony Brook, the Pratt Institute in Brooklyn, and the Art Students League of New York. She is a member of the Pastel Society of America, and her work is in many private and public collections, including the Library of Congress and the Museum of the City of New York.

*Donated by the Artist*

# 114

ede-else (1894-1984)

*Nestled in the Hills*

Value: \$750

Opening bid: \$300

Minimum bidding increment: \$50

Oil, 13¼ x 19½ inches, 1978. Born Elsie Miller in East Orange, NJ, ede-else studied



Lot 114

at Art Students League of New York for five years and was active in the Greenwich Village art scene. She was drawn to the Connecticut shore in 1949, where she was an elected member of the Lyme Art Association and exhibited there until her death. Her works are in many private collections across the United States, as well as in the Florence Griswold Museum's permanent collection.

*Donated by Mr. & Mrs. Rudolph F. Besier*

## 115

Daniel Graves

*Venice Canals*

Value: \$700

Opening bid: \$300

Minimum bidding increment: \$50

Etching, 5 x 7 inches. Founder and director of the Florence Academy of Art in Florence, Italy, Daniel Graves has a rich background of artistic training. He graduated from the Maryland Art Institute in 1972, where he studied anatomy, painting, and etching. He then pursued his training in the Old Masters techniques and classical realism with several reputable teachers. He has had numerous solo and group shows in Europe and the United States, and his works are part of private and public collections worldwide.

*Donated by the Artist*



Lot 115

## 116

Sears Gallagher (1869-1955)

*June Days*

Value: \$600

Opening bid:

Minimum bidding increment:

Etching, 6 x 9 inches, circa 1920. After studying in Paris, Sears Gallagher became a well-known painter, etcher, and teacher in the Boston area. He frequented Monhegan Island and was much inspired by the surrounding landscape. His works are in the collection of the Boston Museum of Fine Arts, the Boston Public Library, the Art Institute of Chicago, and the Honolulu Academy of Art, among many others.

*Donated by Mr. & Mrs. Robert Czepiel*

*Framing donated by Studio 33, New London, CT*

## 117

Thomas Nason (1889-1971)

*Spring Landscape*

Value: \$600

Opening bid: \$250

Minimum bidding increment: \$50

Copper engraving, 6 x 9 inches, 1935. Working from his studio on Joshuatown Road in Lyme, CT printmaker Thomas W. Nason built a lasting reputation for his deliberate





Lot 117

and stark wood engravings of rural New England life, many of which were created to accompany treasured poems by Robert Frost. Nason's stirring pastorals and meditations on nature and regional architecture encourage a poetic reading of his prints, including this one, which remains one of his best known works.

*Donated by Hedy & Jim Korst*

*Framing donated by Shoreline Framing, LLC,  
Westbrook, CT*

## 118

Michael Theise

*Marble Top*

Value: \$600

Opening bid: \$250

Minimum bidding increment: \$50

Oil on panel, 3½ x 5 inches. Michael Theise is a master of *trompe l'oeil* (fool the eye) painting. He is a graduate of the Paier College of Art and is considered a protégé of Ken Davies. He is represented in many prestigious collections and galleries, including Vose Galleries in Boston and The Cooley Gallery in Old Lyme.

*Donated by the Artist*

## 119

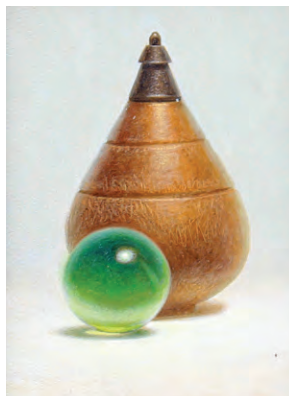
Randie Kahrl

*Maria*

Value: \$595

Opening bid: \$200

Minimum bidding increment: \$50



Lot 118

Oil, 8 x 10 inches. Randie Kahrl graduated from Cornell University with a minor in the History of Art and continued to do graduate work at the University of Minnesota. She began to take drawing classes in the early 1980s at the Lyme Academy College of Fine Arts, studying with Deanne Keller, Jerry Caron, and Lou Bonamarte. She is a member of the Connecticut Society of Portrait Artists, Lyme Art Association, and Mystic Museum of Art where she received the overall excellence award in 2012.

*Donated by the Artist*



Lot 119



Lot 120

## 120

Edward Seager (1809-1886)

*Rustic Building*

Value: \$500

Opening bid: \$200

Minimum bidding increment: \$50

Pencil on paper, 11½ x 9 inches, c. 1860. Born in England, Edward Seager came to the United States in the 1830s and in 1844 became drawing master at the English High School in Boston. He traveled and sketched in Panama and Cuba and in 1861 made sketching trips to New Hampshire. Seager became the first professor of drawing and drafting at the Naval Academy in Annapolis.

*Donated by Ron Luich*

## 121

Nancy Peel Gladwell

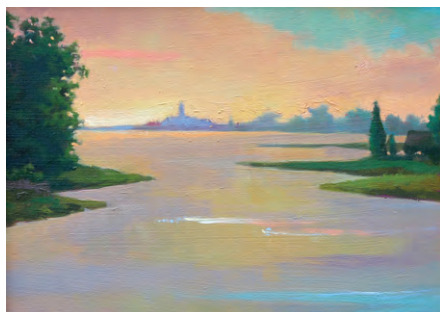
*Untitled*

Value: \$500

Opening bid: \$200

Minimum bidding increment: \$50

Oil on board, 6 x 7 inches, 1998. A graduate of George Washington University, Nancy Gladwell received her MFA from the Hartford School of Arts. She also studied at the Studio de Nera Simi and the Academia delle Arte in Florence, Italy. She has received prestigious awards and grants and has



Lot 121

## 122

Tom Rose

*Off to the Hunt*

Value: \$485

Opening bid: \$200

Minimum bidding increment: \$50

Giclée, 34 x 34 inches. In addition to owning and operating Black Whale Antiques at Rattleberry Farm in Hadlyme for over 30 years, Tom Rose's artwork has appeared in numerous national magazines, including *House Beautiful*, *Country Living*, and *Colonial Homes*. His latest endeavor is a series called, "Doggone Old Masters"—a light-hearted take on paintings of the Old Masters. Tom's portrait of a beagle riding high on his horse heading off to the hunt will make a whimsical conversation piece for any home.

*Donated by Black Whale Antiques, Hadlyme, CT*



Lot 122

### 123

Morris Rosenfeld (1885-1968)

*Flying Spinnakers*

Value: \$475

Opening bid: \$200

Minimum bidding increment: \$50

Silver gelatin print, 11 x 14 inches, 1938. Rosenfeld began his career by photographing on wood and copper for textbook illustrations and freelancing for *Leslie's Weekly* and *Harper's*. He also worked with Edwin J. Levick, a leading yacht photographer, and studied art at Cooper



Lot 123

Union. In 1910, Morris opened a studio in Manhattan where he began doing industrial and advertising photography. As his business grew he was able to focus more on maritime subjects, for which he is best known. The Rosenfeld Collection was acquired by the Mystic Seaport in 1984 and is one of the largest archives of maritime photographs in the United States.

*Donated by Mystic Seaport Rosenfeld Collection, Mystic CT*

### 124

Luigi Lucioni (1900-1988)

*New England Pastoral*

Value: \$450

Opening bid: \$200

Minimum bidding increment: \$50

Etching, 6½ x 9½ inches, circa 1940. Luigi Lucioni was born in Italy and immigrated to the United States in 1911, settling in New Jersey. Lucioni pursued his interest in art by attending evening courses at Cooper Union then attended the National Academy of Design, where he was awarded the Tiffany Foundation Scholarship. Lucioni is best known for his Realist landscapes and still lifes and won many honors throughout his career.

*Donated by Hedy & Jim Korst*



Lot 124



Lot 125

## 125

Suzanne Siegel

*Barn at the Florence Griswold Museum*

Value: \$350

Opening bid: \$150

Minimum bidding increment: \$50

Oil, 16 x 18 inches, June 1999. Suzanne received a BFA in painting from the Lyme Academy of Fine Arts in Old Lyme and her MFA in visual art from Vermont College of the Union Institute, Montpelier, VT. She has exhibited her work in solo and group exhibitions throughout New England, and her works are in many private and public collections.

*Donated by The Cooley Gallery, Old Lyme, CT*

## 126

Nicole Johnson

*Whimsy*

Value: \$225

Opening bid: \$100

Minimum bidding increment: \$50

Mixed media, 22 inches wide. Nicole Johnson graduated with a BFA in Textile Design from Moore College of Art and Design in Philadelphia. She recycles and repurposes objects, canvases, and frames for her

work, which consist of circles and spirals, representing her continuous spiritual, emotional, and creative journeys. Her works can be found in many private collections.

*Donated by the Artist*

*Framing donated by Art Emporium, Old Saybrook, CT*

## 127

Frederick Trap Friis (1865-1909)

*The Artist Sketching*

Value: \$200

Opening bid: \$100

Minimum bidding increment: \$25

Pencil on paper, 6½ x 4½ inches, circa 1900. Swedish-born Frederick Trap Friis was an accomplished Impressionist painter who trained in Europe, came to New York in 1890, and settled in New Bedford, Massachusetts. The quality of his collection, recently discovered, stands as a refreshing testament to the high achievements of those unheralded artists who have slipped through the cracks of art history.

*Donated by Shannon's Fine Art Auctioneers, Milford, CT*



Lot 127

# DECORATIVE ARTS

## LOTS 200-210

### 200

Sideboard Artback Table

Value: \$1,500

Opening bid: \$600

Minimum bidding increment: \$100

Put art on a pedestal with this fine furniture frame artback sideboard made of mahogany and Peruvian walnut by Gordon Kyle of Norwich, CT. The construction is solid wood and holds an 11 x 14 inch painting flanked by two mirrors. The painting included is an original oil painting by Gordon himself titled "Utah Pines" from his trip out west in 2012, however the painting can be easily changed on the back of the pedestal. Measures 55 inches long, 52 inches high and 14 inches wide. Perfect for the avid art collector who no longer has wall space to hang works of art.

*Donated by Gordon Kyle*



Lot 200

### 201

David D.J. Rau

*Cage of Wonder*

Value: \$700

Opening bid: \$300

Minimum bidding increment: \$50

Mixed-media assemblage in wood bird cage with electric lighting, 9¾ x 9½ x 9 inches, 2016. Based on the *Wunderkammer* or Cabinets of Wonder, this "theatre of the world" contains objects from the diverse worlds of art, natural history, archaeology, ethnography, religion, and antiquities (real and fake), displayed in one tightly packed space. Made of mostly found objects, the assemblage was created by the Museum's Director of Education & Outreach David D.J. Rau in anticipation of this year's *Wee Faerie Village* event, *A Flutter in Time: Faerie Houses Around the World and Across the Ages*.

*Donated by the Artist*

### 202

Antique Mirror

Value: \$500

Opening bid: \$200

Minimum bidding increment: \$50

Beautiful oval mirror with beveled edge. Intricate gold leaf with scallop shell gracing the mirror's top. Natural oxidation due to age. Slight loss of left gold ribbon. Circa 1850. Measures 29½ x 13 x 15½ inches.

*Donated by Marcia & David Kalayjian*



**203**

Yellow Poplar Bowl

Value: \$500

Opening bid: \$200

Minimum bidding increment: \$50

Paul Maulucci is a self-employed carpenter from Coventry, CT and has been an avid woodturner for over thirty years. He is a member of the Central Connecticut Woodturners Association and the American Association of Woodturners. His turnings are truly works of art. This yellow poplar bowl was turned from a 75-year-old tree from Andover, CT and has a clear food-safe finish. Clean with a mild soap, warm water and towel dry only. Not for use in dishwashers or microwaves, and do not store in direct sunlight; wood-grain patterns can fade. Measures 6½ inches high and 19 inches wide.

*Donated by Paul Maulucci*

**204**

Lady's Slipper by Mundy Hepburn

Value: \$380

Opening bid: \$150

Minimum bidding increment: \$50

Hand-crafted blown glass, 20 inches tall. Mundy Hepburn's glass art has been exhibited in over thirty installations, and featured in five publications. Hepburn has made a name for himself with a unique style of art—luminous glass. He also specializes in static sculptures, including bowls, cups, flowers, and both indoor and outdoor standing sculptures.

*Donated by the Artist*



Lot 204

**205**

Japanese Imari Charger

Value: \$350

Opening bid: \$150

Minimum bidding increment: \$50

This stunning Japanese charger features ducks in a pond, a flying crane and a turtle motif by Imari. Great piece for the avid Asian art collector. Late 19th century and measures 14½ inches in diameter.

*Donated by Hedy & Jim Korst*



Lot 205



Lot 206

## 206

Pair of Vintage Table Lamps

Value: \$300

Opening bid: \$150

Minimum bidding increment: \$50

These vintage porcelain table lamps will work in any room in your home. Wood base with blue Asian motif of trees and flying birds on each lamp. Also includes new shades from Restoration Hardware. Measures 21 inches with shade.

*Donated by Treasures, Old Lyme, CT*

## 207

Cherry & Birch Candle Stand

Value: \$275

Opening bid: \$150

Minimum bidding increment: \$50

This American country Hepplewhite candle stand, c. 1825, will make for a handsome end table or night table in your bedroom, living room or front hall.

*Donated by Arne E. Ahlberg American Antique Furniture, Essex, CT*



Lot 207

## 208

Serena Bates Sculpture

*Lotus Flower and Rose*

Value: \$270

Opening bid: \$100

Minimum bidding increment: \$50

Recycled copper and granite, 8 x 8 x 5 inches. Serena Bates studied at the Lyme Academy College of Fine Art and the Rhode Island School of Design. As a sculptor, she has garnered countless awards, recognitions, and honors during her career. These sculptures are 100% green, made from reclaimed copper and granite, and are for use both indoors and outdoors.

*Donated by the Artist*



Lot 208





Lot 209

## 209

Princess Astrid Coffee & Tea Set  
by Tiffany

Value: \$250

Opening bid: \$100

Minimum bidding increment: \$50

Entertain or enjoy high tea with this elegant Princess Astrid coffee and tea set made in France from Tiffany & Co. The set includes a coffee pot, tea pot, eight dessert plates, seven cups, and eight saucers.

*Donated by Donald & Carol Schwartz*



Lot 210

## 210

Vintage Louis Vuitton Adorned Tray  
with Coasters and Wine Bottle Holder

Value: \$250

Opening bid: \$100

Minimum bidding increment: \$50

Ideal for any room in your home, this one-of-a-kind tray and coasters is the perfect conversation piece for your next gathering. Both the tray and coasters have a liner made from vintage Louis Vuitton luggage. Handmade by Lyme resident and auction co-chair Marie Martin. Also this unique wine bottle holder, hand-carved from wood by Guilford resident Steve Gresham, will add a little flair to your next dinner or cocktail party.

*Donated by Marie Martin and Steve Gresham*

# EVENTS TO REMEMBER

## LOTS 300-369

### 300

Dinner Overlooking the Thimble Islands

Value: UNIQUE!

Opening bid: \$1,000

Minimum bidding increment: \$100

Enjoy dinner for ten at the waterfront home of Rob & Tricia Wilber, overlooking their beautiful gardens and the Thimble Islands in Stony Creek, CT. Dinner will include a champagne reception, followed by a multi-course dinner and appropriate wine pairings. An unforgettable experience for lovers of food and nature! Valid during summer 2017. Date to be agreed upon by both parties.

*Donated by Robert & Tricia Wilber*



Lot 300

### 301

Spend a Day Training with Overland Experts

Value: \$1,350

Opening bid: \$550

Minimum bidding increment: \$100

Tap into your sense of adventure and experience the outdoors in a truly unique way—by learning the science of off-road and

4x4 vehicle driving. Go where others cannot or dare not as you and three friends spend one day training with Overland Experts. Valid for one year.

*Donated by Overland Experts, LLC, East Haddam, CT*



Lot 301

### 302

Four Premium Tickets to UCONN

Women's Basketball Game

Value: PRICELESS!

Opening bid: \$200

Minimum bidding increment: \$50

Four premier seats to see the eleven time National Champions (including four straight National Championships in each of the last four years) UCONN Women's Basketball



Lot 302

Events to Remember

LOTS 300-369

Team. Exact date to be mutually agreed upon for a January or February 2017 game at the Gampel Pavillion in Storrs, CT. The seats will be in the fourth row, center court, on the aisle. Preferred parking will be included in the package.

*Donated by John & Dyanne Rafal*

303

Fine Dining for Two at Spicer Mansion

Value: \$500

Opening bid: \$200

Minimum bidding increment: \$50

Enjoy a fine dining experience for two with wine pairings in the restaurant at Spicer Mansion, a fixture of historic Mystic, CT since 1853. Now part of the Ocean House, Watch Hill, RI family, the Mansion offers world-class cuisine with a six-course tasting menu that changes daily, featuring artisanal meats, bracingly fresh seafood, locally sourced ingredients, and memorable tableside preparations. Valid November 2016 through April 2017 and November 2017 only. Expires November 30, 2017. Subject to availability and excludes holidays. Taxes, additional alcoholic beverages and gratuity not included.

*Donated by Spicer Mansion, Mystic, CT*



Lot 303



Lot 304

304

Foursome of Golf with

Lunch at Black Hall

Value: \$500

Opening bid: \$200

Minimum bidding increment: \$50

Enjoy a foursome of golf at Black Hall, a private, top-rated golf club of Southeastern Connecticut located in Old Lyme and designed by renowned architect Robert Trent Jones. Your day will also include lunch in the club's dining room with outdoor terrace. Date to be mutually agreed upon between donor and high bidder. Valid for one year.

*Donated by John & Dyanne Rafal*

305

New York City Ballet, Backstage Tour, and Autographed Shoes

Value: \$500

Opening bid: \$200

Minimum bidding increment: \$50

Immerse yourself in a truly magical evening at the ballet, reveling in the beauty of the dance on stage and behind-the-scenes at the New York City Ballet. The winner will receive two orchestra tickets for the performance of your choice during the 2016-2017 repertory season, while also having the unforgettable experience of watching a rehearsal and receiving a backstage tour (Tuesdays through Fridays, in the afternoon). Your souvenir will be a pair of pointe ballet shoes

worn and autographed by Ballerina Lauren Lovette. Performance selection is subject to ticket availability.

*Donated by Sally & Larry Lawrence and the New York City Ballet*

### 306-319

"All That Jazz"

Opening bid: \$125 per person

Fourteen people can enjoy a "jazzy" evening of wine/cocktails and a wide assortment of delicious hors d'oeuvres at an antique Skip Broom home in Lyme. The event will be hosted by Florence Griswold volunteers Diane Kaslow, Dyanne Rafal, and Sharon Tracy (all culinary aficionados!). Andy Kaslow will play some jazz tunes on the piano and will select some of the best jazz classics for the guests to listen to when he is not playing. This fabulous party will take place on Saturday, October 15, 2016 from 6:00 pm - 8:00 pm.

*Donated by Diane & Andy Kaslow, Dyanne Rafal, and Sharon Tracy*

### 320

Tickets for *Scenes from Court Life* at Yale Rep and Overnight Stay at the Study at Yale

Value: \$465

Opening bid: \$200

Minimum bidding increment: \$50

Receive two complimentary tickets for a Tuesday, Wednesday, or Thursday evening performance to the world premiere of Sarah Ruhl's play *Scenes from Court Life, or the whipping boy and his prince*, at the Yale Repertory Theatre from September 30–October 21, 2016. Subject to availability and excludes opening night. Also enjoy overnight accommodations for two (including sales tax) at the

Study at Yale. Includes breakfast for two the following morning at Heirloom. Subject to availability. Expires October 1, 2017.

*Donated by Yale Repertory Theatre, New Haven, CT and The Study at Yale, New Haven, CT*

### 321

Family Fun Package

Value: \$475

Opening bid: \$200

Minimum bidding increment: \$50

Fun for the entire family! Includes: four admission tickets to the Yale Peabody Museum of Natural History in New Haven, CT; four general admission tickets to the Connecticut Science Center in Hartford (expires June 30, 2017); pass for two adults and two children to the Essex Steam Train and River Boat in Essex, CT (not valid for special events); a family membership to Connecticut's Beardsley Zoo in Bridgeport (must be redeemed by April 1, 2017); a family four pack of general admission tickets to the Children's Museum in West Hartford, CT (expires December 31, 2016); and two after 5 passes for four to Quassy Amusement Park with unlimited rides and access to Splash Away Bay (boats excluded) valid after 5pm, Monday - Thursday in June, July & August 2017, excluding July 4, 2017.

*Donated by Yale Peabody Museum of Natural History, New Haven, CT; Connecticut Science Center, Hartford, CT; Essex Steam Train & River Boat, Essex, CT; Connecticut's Beardsley Zoo, Bridgeport, CT; The Children's Museum, West Hartford, CT; and Quassy Amusement & Waterpark, Middlebury, CT*



Lot 322

**322**

Tandem Skydive for Two

Value: \$450

Opening bid: \$200

Minimum bidding increment: \$50

Experience the thrill of a lifetime, and cross skydiving off your bucket list! You and a guest will enjoy a 20-minute scenic plane ride over the Last Green Valley, then jump harnessed to an instructor from two miles above the Earth and free fall at 120 miles per hour to 5,000 feet where you will then experience a calming 5-7 minute parachute ride to the ground. Prepare for 2-4 hours on a week day and 4-6 hours on a weekend. Must be at least 18 years old, weigh less than 230 pounds and be in good physical health. One certificate expires March 31, 2018 and one June 8, 2018.

*Donated by Skydive Danielson, Danielson, CT and John & Dyanne Rafal*

**323**

Golf & Lunch at Old Lyme Country Club

Value: \$450

Opening bid: \$200

Minimum bidding increment: \$50

Work on your golf game with 18 holes and two carts for four players at Old Lyme Country Club. Analyze your game afterwards over lunch at the club. (Includes one alcoholic



Lot 323

beverage each and gratuity). Valid for one year.

*Donated by Old Lyme Country Club, Old Lyme, CT and John & Dyanne Rafal*

**324**

U.S. Open Tennis Tickets

Value: \$400

Opening bid: \$150

Minimum bidding increment: \$50

Two loges box seats to the 2017 U.S. Tennis Championships held at the Arthur Ashe Stadium in Flushing, NY. The U.S. Open is a sports and entertainment spectacle featuring world-class athletes and electrifying action. Day session, Thursday, August 31, 2017.

*Donated by Mr. & Mrs. S.E. Canaday*



Lot 324



### 325

Paint with a Whale Experience for Two

Value: \$382

Opening bid: \$150

Minimum bidding increment: \$50

The trainers will introduce you to the whales and give you the opportunity to learn more about them, their habitat, and conservation. The program will begin with you and a guest choosing the colors you would like used in your painting. The trainer will then place a specially crafted brush in the beluga's mouth, and you will hold the canvas while they paint. After the session you can take home the masterpiece, along with a photo of your experience. Approximately 40 minutes long and takes place May through October. Reservations required and must be 13 years of age.

*Donated by Mystic Aquarium, Mystic, CT*



Lot 325

### 326

Letterpress Workshop for Two

Value: \$350

Opening bid: \$150

Minimum bidding increment: \$50

Letterpress is the process of printing with metal or wood type and images on fine

papers with hand or foot operated presses from the 1800s. You and a guest will attend a two-day workshop, to learn the art of letterpress printing with letterpress printer John Falstrom at his studio in Lyme. You will learn how to use all the equipment necessary to set up, adjust, ink, and actually produce your own prints. Each session will be 4-5 hours long. Valid for one year.

*Donated by John Falstrom, Perennial Designs, Lyme, CT*

### 327

Golf for Four at

Stonington Country Club

Value: \$375

Opening bid: \$150

Minimum bidding increment: \$50

Treat yourself to 18 holes of golf at Stonington Country Club. Enjoy a weekday foursome with carts on this private, par 72 championship course. Tucked away off a country road among 140 acres of rolling hills and meadows, Stonington Country Club is in one of Connecticut's most beautiful pastoral golf settings. Weekdays only. Proper dress required. Some restrictions may apply. Valid for one year.

*Donated by Stonington Country Club, Stonington, CT*

### 328

Sunday Funday

Value: \$360

Opening bid: \$150

Minimum bidding increment: \$50

You and three guests can take in Sunday brunch at Fresh Salt located in the Saybrook Point Inn & Spa in Old Saybrook, rated the "#1 Brunch with a Fresh Spin" by *Connecticut Magazine*. Expires September 24, 2017. Alcoholic beverages, tax, and gratuity excluded. After brunch head over to Black

## Events to Remember

LOTS 300-369

Hall Outfitters in Old Lyme for a relaxing afternoon kayaking the Connecticut River Estuary for four hours. Open Memorial Day through Labor Day. Valid for one year.

*Donated by Saybrook Point Inn & Spa, Old Saybrook, CT and Black Hall Outfitters, Old Lyme, CT*

### 329

Dining Out Extravaganza

Value: \$300

Opening bid: \$150

Minimum bidding increment: \$50

Relax and take time off from cooking with this package of gift certificates from local restaurants. Includes: two \$50 gift cards to Dog Watch Cafe in Stonington; a gift certificate for two at Season's Buffet at Mohegan Sun in Uncasville (gratuity not included); \$50 gift card to Bravo Bravo Restaurant in Mystic; \$50 gift card to Red 36 in Mystic; and a \$50 gift card to Olio Restaurant & Bar in Groton.

*Donated by Dog Watch Cafe, Stonington, CT; Mohegan Sun, Uncasville, CT; Bravo Bravo Restaurant, Mystic, CT; Red 36, Mystic, CT; and Olio Restaurant & Bar, Groton, CT*

### 330-343

Cocktail Party on Lyme Street

Opening bid: \$100 per person

Spend a cozy fall evening with Museum trustee Charles Hinckley and his wife Tammy for a cocktail party at their home in Old Lyme, CT. Enjoy wine, amazing hors d'oeuvres, and great company in the historic Captain Daniel Chadwick House built in 1830 and newly remodeled by Pough Interiors of Essex. Also tour their amazing collection of American Impressionist art. Saturday, November 5, 2016, 5:30-7:30 pm. Limited to 14 guests.

*Donated by Charles & Tammy Hinckley*



Lot 330-343

### 344

Aerial Sightseeing

Value: \$300

Opening bid: \$125

Minimum bidding increment: \$50

Experience a half hour aerial flight over the lower Connecticut River Valley for up to three people.

*Donated by Chester Charter, Inc., Chester, CT*



Lot 344

### 345

New Haven Symphony Orchestra

Value: \$300

Opening bid: \$150

Minimum bidding increment: \$50

Take in a performance of your choice with four tickets to any 2016-2017 New Haven Symphony Orchestra Classics or Pops Series in New Haven. Seating based on availability at time of redemption. Not redeemable for cash and may not be credited toward a subscription purchase.

*Donated by New Haven Symphony Orchestra, New Haven, CT*



**346**

Movies for Two for a Year at Madison Art Cinemas

Value: \$300

Opening bid: \$150

Minimum bidding increment: \$50

Experience a movie date night once each month for a year at Madison Art Cinemas! Arnold Gorlick opened the cinemas in 1999, which play both first-run independent art and upscale foreign and domestic films. Each pass will admit two people and will expire one month after each other, beginning October 24, 2016. (Expired passes will not be honored). The passes can be used any day of the week except for special events or benefit showings. Also enjoy a moviegoers gift basket filled with assorted goodies and popcorn, all in a giant reusable popcorn bucket.

*Donated by Madison Art Cinemas, Madison, CT and John & Dyanne Rafal*

**347-356**

Glass Blowing Demonstration  
& Cocktail Party

Opening bid: \$100 per person

Be a part of the creative process and experience the art of glass blowing. Rob Wallace from Arch One Glass Studio in Old Saybrook has been working with glass for over thirty years, and he will give a private glass blowing demonstration in the studio for ten people. See how the art form is done and then take your turn at it. Also enjoy a glass or two of wine donated by Seaside Wine & Spirits and help yourself to some fine meats and cheeses from Fromage Fine Foods & Coffees. Thursday, December 1, 2016, 5:30-7:30pm.

*Donated by Arch One Glass Studio, Old Saybrook, CT; Seaside Wine & Spirits, Old Saybrook, CT; and Fromage Fine Foods & Coffees, LLC, Old Saybrook, CT*

**357**

Guided Tour of the Met for Four with Lunch

Value: \$300

Opening bid: \$150

Minimum bidding increment: \$50

Receive a guided tour for four at the Metropolitan Museum of Art in New York City. You can choose to tour Egypt, Greece, and Rome; the American wing; or the highlights. Tour must take place Monday thru Friday only. Also gain access to the members' dining room where you can enjoy lunch with a \$200 Visa gift card.

*Donated by Clinton Standart and Fred & Marie Martin*



The Metropolitan  
Museum of Art

Lot 357

**358**

EF Watermelon

Value: \$375

Opening bid: \$150

Minimum bidding increment: \$50

Shop 'till you drop with a gift certificate to Old Lyme's emporium of fine jewelry, objets d'art, and Simon Pearce original designs in glass and pottery. Plus take home this stunning Simon Pearce Sand Dollar Platter, 14 inches in diameter.

*Donated by EF Watermelon, Old Lyme, CT*

### 359

*Chasing Rainbows* at the Goodspeed and Dinner at Rustica

Value: \$275

Opening bid: \$100

Minimum bidding increment: \$50

Two tickets to an evening performance of *Chasing Rainbows* at the Goodspeed through November 27, 2016. An inspirational musical showing Judy Garland's bumpy road to Oz. Her complicated childhood comes alive with heartbreak, hope and the music that made her famous. Before the show enjoy an elegant dinner with a \$100 gift certificate to Rustica Ristorante in Chester.

*Donated by Goodspeed Musicals, East Haddam, CT and Daniel S. Hansen*

### 360

Tickets for George Winston at the Kate plus Dinner at Old Lyme Inn

Value: \$290

Opening bid: \$100

Minimum bidding increment: \$50

Two front row orchestra center tickets to see George Winston on Thursday, November 3, 2016, 7:30 pm at the Kate in Old Saybrook. Inspired by R&B, jazz, blues and rock, Winston began playing organ in 1967. In 1971 he switched to the acoustic piano after hearing recordings from the 1920s and 1930s by the legendary stride pianists Fats Waller and Teddy Wilson. In addition to working on stride piano, he also came up with his own style of melodic instrumental music on solo piano, called folk piano. He has released thirteen solo piano albums. Also receive a \$150 gift certificate for the Old Lyme Inn to be used for dining, overnight guest accommodations or SideDoor tickets (may not be used for taxes and gratuity). Expires September 30, 2017.

*Donated by The Katharine Hepburn Cultural Arts Center, Old Saybrook, CT and Old Lyme Inn, Old Lyme, CT*

### 361

Local Sports Package

Value: \$260

Opening bid: \$100

Minimum bidding increment: \$50

Perfect for any sports enthusiast. Enjoy this sports package made up of four packs of tickets to see many of our local teams. Package includes: four Home Run Porch tickets to see the Hartford Yard Goats in Hartford (April/May home games, Monday-Thursday, expires May 31, 2017); four reserved seats to see a Connecticut Tigers home game at Dodd Stadium in Norwich; a four pack of reserved tickets for the 2017 opening day of the Bridgeport Bluefish in Bridgeport; and four tickets to a UCONN men's basketball game at the XL Center during the 2016-2017 season (subject to availability).

*Donated by Hartford Yard Goats, Hartford, CT; Connecticut Tigers, Norwich, CT; Bridgeport Bluefish Professional Baseball, Bridgeport, CT; and UCONN Athletics, Storrs, CT*

### 362

Jazz Brunch for Four at Ocean House

Value: \$250

Opening bid: \$100

Minimum bidding increment: \$50

Sunday jazz brunch for four at Seasons in the Ocean House, Watch Hill, RI. Seasons transforms into a food emporium with a raw bar featuring the freshest seafood, a house-made pastry and dessert display, and a selection of local artisanal cheeses and charcuterie. Enjoy classic breakfast staples and a variety of buffet items. Relax with musician Greg Piccolo performing a combination of jazz, blues and soul, unlimited sparkling wine, and a made-to-order crepe station. Valid November - April



Lot 362

only. Subject to availability and holidays excluded. Alcoholic beverages and gratuity not included. Expires April 30, 2017.

*Donated by Ocean House, Watch Hill, RI*

### 363

Pura Vida Pilates

Value: \$225

Opening bid: \$100

Minimum bidding increment: \$50

Relax and energize yourself with three private one-hour pilates sessions with Lisa Connelly at Pura Vida Pilates in Old Saybrook. Named "Best Pilates Studio on the Shoreline for 2016" by *the-e-list*. Valid through December 17, 2016.

*Donated by Pura Vida Pilates, Old Saybrook, CT*



Lot 363

### 364

Ring in the Holidays with

The New York Pops

Value: \$220

Opening bid: \$100

Minimum bidding increment: \$50

Join the New York Pops for their annual holiday celebration at Carnegie Hall, featuring festive classics sung by Ann Hampton Callaway, Liz Callaway, Anthony Nunziata, Will Nunziata, and a very special surprise guest. The package includes two premium tickets to the performance on Saturday, December 17, 2016, 8:00 pm with a post-concert meet-and-greet with Steven Reineke, Music Director/Conductor of The New York Pops.

*Donated by The New York Pops, New York, NY*



Lot 363

### 365

Musical Masterworks

Value: \$300

Opening bid: \$150

Minimum bidding increment: \$50

Two Saturday subscriptions to the 2016-2017 season celebrating 26 years of world class chamber music performed at the acoustically and aesthetically remarkable First Congregational Church of Old Lyme. This year's concert dates are October 22, 2016, December 3, 2016, February 11, 2017, March 11, 2017, and May 5, 2017.

*Donated by Musical Masterworks, Inc., Old Lyme, CT*

### 366

CT Vineyards Wine Tasting Package  
for Four

Value: \$205

Opening bid: \$75

Minimum bidding increment: \$25

Enjoy a wine tasting experience for four guests at four of Connecticut's premier vineyards: Maugle Sierra Vineyards in Ledyard (where each guest will also receive a souvenir glass); Saltwater Farm Vineyard in Stonington (please schedule in advance, expires December 31, 2016); Chamard Vineyards in Clinton; and Jonathan Edwards Winery in North Stonington (tastings are 11am - 4:30pm, with optional tour at noon).

*Donated by Maugle Sierra Vineyards, Ledyard, CT; Saltwater Farm Vineyard, Stonington, CT; Chamard Vineyards, Clinton, CT; and Jonathan Edwards Winery, North Stonington, CT*

### 367

Wine 101 Course for Two

Value: \$200

Opening bid: \$100

Minimum bidding increment: \$50

You and a guest can attend this three-session course designed to teach the fundamentals of tasting and evaluating wines at The Divine Wine Emporium and Learning Center in Niantic. Your instructor Ken Turcotte is wine consultant and owner of The Divine Wine Emporium and has been in the wine profession for more than 38 years. Students will taste four wines in each session, each of which represent various styles and types. Enrollment includes admission, all wines to be tasted, and all classroom materials. Space in Wine 101 must be reserved in advance.

*Donated by The Divine Wine Emporium & Learning Center, Niantic, CT and Daniel S. Hansen*

### 368

Eastern CT Symphony Orchestra and  
Tony D's Restaurant

Value: \$200

Opening bid: \$100

Minimum bidding increment: \$50

Take in a performance of your choice at the Eastern Connecticut Symphony Orchestra with two tickets in Section "A", valid for the 2016-2017 concert season at The Garde Arts Center. Concert dates are October 22, 2016, December 3, 2016, January 28, 2017, February 18, 2017, March 25, 2017, and April 29, 2017. Plus enjoy dinner at Tony D's Restaurant in New London with a \$100 gift certificate.

*Donated by Eastern Connecticut Symphony Orchestra, New London, CT and John & Dyanne Rafal*

### 369

Dinner and a Show in Ivoryton

Value: \$150

Opening bid: \$50

Minimum bidding increment: \$25

Receive two tickets to see *Tenderly: The Rosemary Clooney Story* at the Ivoryton Playhouse, running October 26-November 13, 2016. Stop by the Cooper Beech Inn before the show and use a \$50 gift card towards a delightful dinner. Enjoy a lovely night out on the town!

*Donated by The Ivoryton Playhouse, Ivoryton, CT and The Copper Beech Inn, Ivoryton, CT*

# TRAVEL

## LOTS 400-405

### 400

Anacaona Boutique Hotel in Anguilla

Value: \$1,400

Opening bid: \$600

Minimum bidding increment: \$100

Enjoy five days and four nights at the Anacaona Boutique Hotel located in the heart of the trendy West End on the beautiful island of Anguilla in the British West Indies. The hotel is surrounded by tropical gardens and a short stroll from a mile of white powder sand beach on Meads Bay. The room includes a queen bed, balcony, and wireless internet. On the beach are two pools, deck chairs and umbrellas. Snorkeling equipment and beach towels are complimentary. Their restaurant "Firefly" serves breakfast, lunch and dinner. Meals and airfare not included. Based upon availability and excludes all holidays. Valid for one year.

*Donated by Cynthia Miller-Aird*



Lot 400

### 401

24-Hour Cultural Getaway to New York City

Value: \$950

Opening bid: \$400

Minimum bidding increment: \$100

Overnight stay for two at the exclusive University Club, including dinner at the restaurant of your choice, Broadway theater tickets, and passes to MoMA. Date and choice of show to be mutually agreed upon. Must be used by September 30, 2017.

*Donated by William Phillips & Barbara Smith*

### 402

Night Out at Mohegan Sun

Value: UNIQUE!

Opening bid: \$300

Minimum bidding increment: \$50

Enjoy a one-night stay at Mohegan Sun Hotel, dinner for two, up to \$250, at one of the following Mohegan Sun restaurants: Tuscany, Bar Americain, or Bobby's Burger Palace, and two tickets to a show of your choice at the Mohegan Sun Arena (subject to availability). Valid for one year.

*Donated by The Mohegan Tribe, Uncasville, CT*



Lot 402

**403**

Four Park Hopper Passes to  
Walt Disney World Resort

Value: \$620

Opening bid: \$250

Minimum bidding increment: \$50

Start your next family vacation at the Walt Disney World Resort in Central Florida with four one-day park hopper passes. Each pass provides admission to a magical experience at each of their unique theme parks: Magic Kingdom, Epcot, Hollywood Studios, and Animal Kingdom within one day. Expires May 6, 2018. Subject to block-out dates and may not be used December 25-31 of any year.

*Donated by Walt Disney World Resort, Orlando, FL*



Lot 403

**404**

Block Island Getaway

Value: \$500

Opening bid: \$200

Minimum bidding increment: \$50

Create your own getaway with a \$500 gift certificate to the Victorian Inns by the Sea at the head of Crescent Beach on Block Island. You can choose The Blue Dory Inn (named Block Island's most romantic bed and breakfast by *Boston Best Guide*) or Avonlea, Jewel of the Sea cottages, both located on the beach and close to town.

*Donated by Mr. & Mrs. Robert Staab*



Lot 405

**405**

Maine Mansion Retreat

Value: \$250

Opening bid: \$100

Minimum bidding increment: \$50

Get away to Kennebunkport, Maine for some much-needed R & R! Gift certificate for a one-night stay, Sunday through Thursday, in a classic room at the historic Captain Lord Mansion, an intimate Maine coast inn and the subject of the Museum's painting by Willard Metcalf. Includes breakfast, afternoon tea, and a welcoming split of champagne. Valid November 1, 2016 through May 15, 2017, excluding all holidays, special events and school vacation weeks.

*Donated by Captain Lord Mansion B&B,  
Kennebunkport, ME*



# POTPOURRI

Lots 500-527

## 500

Swans Island Handwoven Blanket

Value: \$1,395

Opening bid: \$550

Minimum bidding increment: \$100

Cuddle up with this luxurious Swans Island blanket, hand-loomed in Maine of fine wool sourced from small New England farms and hand-dyed using natural dyes. The blanket is woven into a double layer, large plaid construction creating air pockets in between layers for extra warmth. Comes in a keepsake linen bag with protective aromatic cedar. Double/Queen size 90 x 90 inches, white with maize checks. Ideal for those chilly New England nights.

*Donated by Virginia & Timothy Millhiser*



Lot 500

## 501

Teak Root Furniture

Value: \$1,000

Opening bid: \$400

Minimum bidding increment: \$100

Take home this teak root loveseat and chair by Indonesia Import. Perfect for your



Lot 501

woodland garden or on the beach. Sure to be a conversation piece among your guests. These pieces were on display during the Museum's 2015 *Wee Faerie Village*.

*Donated by David D.J. Rau and Daniel Hansen*

## 502

Custom Gentleman's Blazer

Value: \$1,000

Opening bid: \$400

Minimum bidding increment: \$100

The ultimate luxury for a gentleman! Enjoy a custom-made sport coat or blazer fitted to you with bespoke perfection after a personal consultation and fitting with professional clothier Alan Horwitz at your home or office. *Donated by Alan Horwitz, Well Suited, Stony Creek, CT*

## 503

Day of Beauty in Old Lyme

Value: \$735

Opening bid: \$300

Minimum bidding increment: \$50

Treat yourself to a day of beauty with \$300 worth of exclusive, European facial services at Faces Aesthetics-Skincare in Old Lyme, followed by a one-hour Swedish massage



from Bonne Sante in Old Lyme. Finish the day with a cut and color from one of Salon Pure's master stylists, then take home a spring tote full of assorted Keratin products and a 1.0 Hai Neo styling iron.

*Donated by Faces Aesthetics-Skincare, Old Lyme, CT, Bonne Sante, LLC, Old Lyme, CT, and Salon Pure, Old Lyme, CT*

## 504

Luxurious Products & European Facial from Timothy Pamment Salon

Value: \$630

Opening bid: \$250

Minimum bidding increment: \$50

Reward yourself with two amazing gift baskets from Timothy Pamment Salon. The first contains: Honey Hush Nail Lacquer by Smith & Cult; Cleansing Oil Shampoo and Muroto Volume Hair Masque by Shu Uemura; and Thompson Ferrier Byzantine Candle and Reed Diffuser. The second basket contains a Diamond Extreme Travel Set by Natura Bliss and a gift certificate for a luxurious 60-minute European Facial with Lisa.

*Donated by Timothy Pamment Salon, Madison, CT*

## 505

Jacques Pépin Cookbooks and Le Creuset

Value: \$600

Opening bid: \$250

Minimum bidding increment: \$50

Ideal for the novice or experienced cook is a collection of autographed cookbooks by acclaimed chef Jacques Pépin, who has published twenty-five cookbooks, starred in twelve cooking TV series, and won multiple James Beard Awards and IACP Cookbook Awards. Titles include: *More Fast Food My Way*, *Chez Jacques*, and the memoir *The*

*Apprentice: My Life in the Kitchen*. You can whip up some of his favorite recipes in this 5-quart oval French oven and 8-quart stock pot by Le Creuset. Both in Marseille blue.

*Donated by Jacques Pépin and Chef's Equipment Emporium, Orange, CT*

## 506

2006 Valdicava Riserva Madonna del Piano, Brunello di Montalcino

Value: \$600

Opening bid: \$250

Minimum bidding increment: \$50

Enjoy three bottles of 2006 Valdicava Riserva Madonna del Piano, Brunello di Montalcino, a classic Brunello made from Sangiovese grapes. Former *Wine Spectator* editor and Italian wine expert James Suckling had trouble controlling himself when he tasted this wine and gave it 100 points. "Amazing aromas of blueberries and flowers, with black truffles and pie. Powerful, with great depth of gorgeous fruit and ultra-fine tannins."

*Donated by Sally & Larry Lawrence*



Lot 506

# 507

2011 Napa Valley Reserve Cabernet Sauvignon

Value: \$555

Opening bid: \$200

Minimum bidding increment: \$50

Three bottles of 2011 Napa Valley Reserve Cabernet Sauvignon, made for members only of The Napa Valley Reserve, a wine country club established by legendary Napa winemaker Bill Harlan of Harlan Estates. Grape cultivation and winemaking operations all take place under the supervision of the Harlan Estates team.

*Donated by Sally & Larry Lawrence*



Lot 507

# 508

Tory Burch Amanda Classic Hobo Bag

Value: \$485

Opening bid: \$200

Minimum bidding increment: \$50

A classic Tory Burch pebbled leather handbag with gold toned hardware featuring protective feet on the bottom; a magnetic top snap closure; front flap pocket with a



Lot 508

hidden magnetic snap closure; slip pocket in the back; dual leather tubular handles; and a removable, adjustable strap for shoulder or cross body wear. The interior features a custom Tory Burch lining with a zip pocket, a slip pocket, and a phone/media pocket. Approximate dimensions are 13½ in (L) x 11 in (H) x 4½ in (W).

*Donated by Tory Burch, LLC, New York, NY*

# 509

Stone Birdbath

Value: \$450

Opening bid: \$200

Minimum bidding increment: \$50

Hand chiseled stone birdbath by Steve Evankow of Lyme. This sculptured work of art will look handsome in your garden while serving as a watering hole for all your feathered friends.

*Donated by Steven Evankow*

# 510

2001 Domaine de la Vieille Julienne  
Vieille Vignes

Value: \$400

Opening bid: \$150

Minimum bidding increment: \$50

Enjoy three bottles of the last vintage



Lot 510

produced from the 50-100 year old vines of this renowned Châteauneuf du Pape estate. Consisting of 80% Grenache, with the rest Syrah and Mourvedre, this wine has a dense purple color and is now in its prime drinking range, but should continue to have many years of additional bottle life. Robert Parker gives it 95 points and identifies aromas of blackberries, raspberries, blueberries and kirsch and describes it as a wine of “superb purity, immense fruit and unbridled power.”

*Donated by Sally & Larry Lawrence*

## 511

Michel Couvreur Malt Scotch Whisky

Value: \$375

Opening bid: \$150

Minimum bidding increment: \$50

Add a rare treasure to your liquor cabinet with this bottle of very sherried single-single malt scotch whisky. Aged 24 years, matured in Spanish sherry butt, reduced with Loch Katrine water and bottled by Michel Couvreur. Numbered bottle comes in original case and was given to Frederick Bonsal Seggerman personally by Michel Couvreur himself 10 years ago. Product of Scotland, this is a perfect after-dinner whisky.

*Donated by Isabelle D. Seggerman*



Lot 511

## 512

14K Gold Enameled Butterfly Necklace

Value: \$350

Opening bid: \$150

Minimum bidding increment: \$50

Charming 14K gold enameled butterfly on an 18-inch 14K gold chain. A beautiful piece to wear for any occasion.

*Donated by Deep River Design, Deep River, CT*



Lot 512

### 513

#### The Essence Experience

Value: \$475

Opening bid: \$200

Minimum bidding increment: \$50

You will begin your Essence Experience with a customized anti-aging facial, soothing eye treatment, and a relaxing neck and shoulder massage, followed by a spa pedicure and manicure. You will finish up with a customized dimensional color and haircut, which will include \$65 worth of products chosen for your specific hair and style. Please allow five hours for your experience. Expires December 31, 2016.

*Donated by Essence Center for Beauty & Wellness, Old Saybrook, CT*

### 514

#### Antique Chinese Pot with Dwarf Threadleaf Red Japanese Maple

Value: \$315

Opening bid: \$150

Minimum bidding increment: \$50

Beautiful addition to your deck or patio. This dark blue glazed antique Chinese planter can be planted with this spectacular *Acer palmatum dissectum* (dwarf threadleaf red Japanese maple), or use it to display seasonal annuals or perennials. Pot measures 16 inches high and 25 inches in diameter, with a drainage hole in the bottom.

*Donated by Marcia H. Murphy and Rick & Donna Carlson*

### 515

#### In-Home Consultation

Value: \$300

Opening bid: \$150

Minimum bidding increment: \$50

Licensed Interior Designer, Chantal

Lawrence from Total Design Source will come to the winning bidder's home and perform a two-hour in-home consultation focusing on the reuse, rehanging and refreshing of your artwork or design needs of your choice.

*Donated by Total Design Source, LLC, Old Saybrook, CT*

### 516

#### Pet Portrait

Value: \$300

Opening bid: \$150

Minimum bidding increment: \$50

Local Old Lyme artist Carol Ridgway will turn a photo of your beloved pet into a 9 x 12 inch oil painting for you to treasure forever. She has exhibited her work at the Lyme Art Association, Mystic Museum of Art, Clinton Arts Center, and Madison Arts Center. Valid for one year.

*Donated by Carol Ridgway*

### 517

#### His & Her Massages & Spa Gift Bag

Value: \$285

Opening bid: \$100

Minimum bidding increment: \$50

Enjoy this spa getaway package from Vitality Spa and Holistic Health in Old Lyme with two 60-minute signature massages and a his and her spa gift bag featuring: a pair of his and hers Oka B sandals, Solavedi Organics olive hemp hand cream, K. Hall Design Egyptian Jasmine hand & body cream, and a set of two Lifefactory wine glasses with protective silicone sleeves. A perfect way to unwind after a busy work week. Valid through October 1, 2017.

*Donated by Vitality Spa & Holistic Health, Old Lyme, CT*

# 518

Ann Lightfoot Necklace

Value: \$250

Opening bid: \$100

Minimum bidding increment: \$50

Adorn yourself with this beautiful necklace by local jewelry favorite Ann Lightfoot. Her hand-crafted jewelry has been exhibited in art galleries and museums and can be found in fine stores from Los Angeles to London. Be the first to be seen in this stunning piece from her new fall collection!

*Donated by Ann Lightfoot Inc., Lyme, CT*

# 519

For Your Garden or Patio

Value: \$250

Opening bid: \$100

Minimum bidding increment: \$50

Add these handsome granite stone planters full of succulents to your garden. Handcrafted this year by stone mason Brant Amacher.

*Donated by Brant Amacher, Stone Mason, Moodus, CT*

# 520

Rob Rivers Retreat

Value: \$238

Opening bid: \$100

Minimum bidding increment: \$50

Be refreshed with “The Rivers Retreat”—the most requested spa package at Rob Rivers, The Salon and Spa in Old Lyme. You will be treated to their essential facial, a spa manicure and pedicure, and an aromatherapy scalp massage and shampoo with blow-out. A perfect way to relax and feel beautiful. Allow four hours.

*Donated by Rob Rivers, The Salon and Spa, Old Lyme, CT*



**ROB RIVERS**  
The Salon & Spa

Lot 520

# 521

Rare Hybrid Kalmia

Value: \$220

Opening bid: \$100

Minimum bidding increment: \$50

Add this rare *Kalmia Latifolia* hybrid to your garden, with its most unusual star-shaped, white flowers and dark green foliage. Field dug, balled and burlapped. 36 inch tall plant. Randy Robinson, the Museum’s grounds keeper, will plant for you within a twenty-five mile radius of the Museum. Date to be mutually agreed upon.

*Donated by Broken Arrow Nursery, Hamden, CT*

*Planting donated by Randy Robinson*

# 522

2010 Chateau Rieussec, Premier Grand Cru, 1500 ml

Value: \$200

Opening bid: \$75

Minimum bidding increment: \$25

A rare magnum of Sauternes, the classic Bordeaux dessert wine is made from Semilion grapes, which are harvested in late Autumn when botrytis (the “noble rot”) has had a chance to work its magic, resulting in a high sugar content and an end product known as “liquid gold.” Outpointing its most

## Potpourri

famous cousin, Chateau d'Yquem, Robert Parker gave it 96 points and said that "it has become a contender for the finest Sauternes of the vintage. It is blessed with a pure and lifted bouquet with ripe peach, nectarine and honey. Hints of shaved ginger poke their head above the surface with aeration. The palate is medium-bodied with fine tannins, perfectly judged acidity and convincing harmony."

*Donated by Sally & Larry Lawrence*



Lot 522

## 523

Haircut at Shag and 14K Gold Earrings

Value: \$240

Opening bid: \$100

Minimum bidding increment: \$50

Pamper yourself with a haircut and blow dry with Kristen at Shag in Madison. Valid through August 2017, excludes tips. Then show off your new haircut by treating yourself to this stunning pair of 14K gold circular mesh dangle earrings with lever back closure. Hang 1 1/4 inches.

*Donated by Shag, Madison, CT and Paul C. Lirot Jewelers, Madison, CT*

## Lots 500-527



Lot 523

## 524

Set of Three Unique Terrariums

Value: \$180

Opening bid: \$75

Minimum bidding increment: \$25

Add a little nature to any room in your home or office. Also works great as a hostess gift. Local artist Lori Warner has created three unique terrariums each in a different decorative glass vessel.

*Donated by Lori Warner Gallery, Chester, CT*

## 525

Smoky Quartz Necklace & Bracelet

Value: \$150

Opening bid: \$75

Minimum bidding increment: \$25

Dress up your wardrobe with this beautiful smoky quartz necklace and bracelet set made by Old Lyme artisan Michaelle Pearson. Perfect for work or a night out on the town. Necklace is 18 inches and bracelet 7 inches.

*Donated by Michaelle Pearson*





Lot 525

## 526

Phalaenopsis Orchid from Ballek's

Value: \$100

Opening bid: \$50

Minimum bidding increment: \$25

Take home this lovely phalaenopsis orchid garden in a decorative pot.

*Donated by Ballek's Garden Center, East Haddam, CT*

## 527

Americana Collection

Value: \$285

Opening bid: \$100

Minimum bidding increment: \$50

With it being an election year we put together a collection of items to inspire you to get out and vote come November. Includes: a 3 x 5 foot cotton American flag which was flown over the United States Capitol on June 30, 2016 with certificate; a 100% imported printed silk USA stripe tie from Vineyard Vines handmade in the USA; and a collection of books, *Saving America's Treasures* by National Geographic and the National Trust for Historic Preservation, *United States of Americana* by Kurt B. Reighley, *Hamilton: The Revolution* by Lin-Manuel Miranda and Jeremy McCarter, *Mark Twain's America: A Celebration in Words and Images* by Harry L. Katz and the Library of Congress, *The Great American Cookbook* by Clementine Paddleford, and *God Bless America: A Patriotic Coloring Book* with a set of double-ended markers.

*Donated by Gregory Strupes; Vineyard Vines, Stamford, CT; Micro Marketing, LLC, Old Lyme, CT*



Opening bid: \$30

Bid on a bottle or two or three of red or white wine selected and donated by the members of the Museum's Steering committee. Each bottle is valued from \$25 up to \$129 with a special bottle of red wine valued at \$400 and a few bottles of Champagne are mixed in with the white wines. Choose a number and see your selection at the end of the evening, who knows you might end up with an expensive bottle of wine at a bargain price!

*Donated by members of the Florence Griswold Museum's Steering Committee*

# Archambault Insurance is now called Smith Brothers

The Archambault Insurance family has combined with one of the best insurance agencies in New England and is keeping it local, right here in Chester.



**ARCHAMBAULT INSURANCE**  
An affiliate of **SmithBrothers.**

**SmithBrothers.**  
Be sure.

2 North Main St, Chester, CT 860-526-9587 [SmithBrothersUSA.com](http://SmithBrothersUSA.com)  
Insurance | Surety | Risk Management | Benefits | Financial

ESTD 2002  
  
**ashlawn farm**  
**COFFEE**



**SAYBROOK JUNCTION**

455 BOSTON POST RD | OLD SAYBROOK, CT 06475  
CAFE: (860) 339-5663 | ROASTERY: (860) 391-8492

## Where Beautiful Gardens Begin...



Professional Landscape Design Team  
Experienced Installation Craftsmen  
Complete Garden Installation  
Tumbled Paver Walks and Patios  
Classic Fieldstone Walls  
Dramatic Garden Lighting  
Vibrant Water Gardens  
Economical Hydroseeding  
Sitework and Grading  
...and much more.



**860-859-3100** [burnettslandscaping.com](http://burnettslandscaping.com) **CT Lic. # 608952**



**ZELEK ELECTRIC CO.**  
187A Boston Post Rd.  
Po Box 897  
Old Lyme, CT 06371-0897

- Solar Installations
- Bucket Truck Available
- Electrical Upgrades
- Generators Sales and Installation
- Home or Business wiring
- Lightning Protection
- Residential, Commercial and Industrial Wiring
- Family Owned and Operated
- All phases of electrical wiring

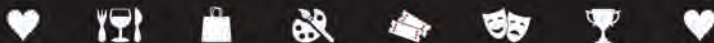
***BIG enough to get the job done; SMALL enough to care!***

**Office 860.434.9726 Fax 860.434.1525**

# the-e-list

===== a free weekly email newsletter =====

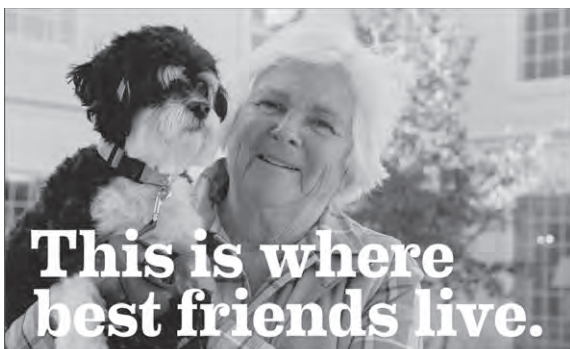
about all good things on the Shoreline of Connecticut



..... We scour the Shoreline to find the best  
restaurants, boutiques, art venues & happenings. ....

=====

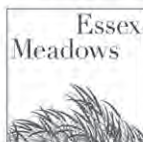
To sign up for your free guide to the shoreline  
go to [www.the-e-list.com](http://www.the-e-list.com)



## This is where best friends live.

Put yourself in the middle of possibility. Find happy, friendly faces in our warm, inviting spaces. Meet new pals around every corner, every day. All this, always just outside your door.

**Welcome to a lifecare retirement community focused on the best of your life. We're Essex Meadows.**



30 Bokum Road  
Essex, CT 06426  
860-581-4601  
[EssexMeadows.com](http://EssexMeadows.com)



More for the life you love.

Managed by  Life Care Services<sup>TM</sup>

Connecticut  
Emissions  
Program



[www.allproautomotive.com](http://www.allproautomotive.com)

**147 Boston Post Road, Old Lyme, CT 06371**

**Jeff Graybill**  
Manager

**(860) 434-2265**

**Dave Graybill**  
Manager

**ANDREW RUBENOFF : DESIGN**

**38 SPERRY STREET NEW HAVEN, CT 06511 (203) 562-0001**  
**ANDREWRUBENOFF.COM**



# FLANDERS FISH

MKT | REST | BAR

FRESH FISH MARKET  
RESTAURANT & BAR  
CATERING & CLAMBAKES  
CAPTAIN'S TABLES

\*newly renovated!\*

keeping it fresh since '83



## THANK YOU

TO THE FLORENCE GRISWOLD  
MUSEUM FOR GIVING ART  
A SENSE OF PLACE  
IN OUR COMMUNITY!

### FLANDERSFISH.COM

22 chesterfield road, east lyme, ct 06333 | 860.739.8866



GITA SAFAIAN, DMD  
HAMBURG COVE ENDODONTICS

ROOT CANAL SPECIALIST



Hamburg Cove Endodontics | 248 Hamburg Road Lyme, CT 06371 | (860) 434-7434



(860) 434-5333

**KITCHINGS & POTTER, LLC**  
Counselors at Law

- ♪ Estate and tax planning
- ♪ Wills and trusts; charitable gifts
- ♪ Probate law; estate administration

Suzanne D. Kitchings  
Edward B. Potter

5-1 Davis Road, PO Box 187  
Old Lyme, CT 06371

# Lewitz, Balosie, Wollack, Rayner & Giroux, LLC

*Certified Public Accountants*

36 Elm Street, Old Saybrook, CT 06475  
860-388-4451 | [www.saybrookcpas.com](http://www.saybrookcpas.com)

Providing tax preparation, accounting, and  
financial services to individuals, businesses,  
estates, trusts, and non-profit organizations  
for over 50 years.

**Taxes: The rules have changed.**  
*Let us guide your way.*



It's our **[we're all  
in this together]**  
community.


Liberty Bank proudly supports the people and  
events that make this a great place to live.

liberty-bank.com  
888-570-0773



Find your confident place.



MEMBER FDIC  EQUAL HOUSING LENDER

(860) 739-5032

(860) 739-8917

P-1 200447

S-1 300568

E-9 105292

*Niantic Plumbing  
& Appliance Co., Inc.*

40 PENNSYLVANIA AVENUE  
NIANTIC, CONNECTICUT 06357

ROBERT CUTILLO  
Vice President

JOHN CUTILLO  
President



## THE OLD LYME INN

The **QUINTESSENTIAL**  
**NEW ENGLAND**  
**INN EXPERIENCE**

Inviting guestrooms and  
seasonally inspired menus  
make for a perfect getaway

## THE SIDE DOOR JAZZ CLUB

Voted **BEST LIVE**  
**JAZZ CLUB 2014**

by Connecticut Magazine.  
Notable names in jazz  
take the stage  
every weekend.

the  
side  
door  
AT OLD LYME INN



85 Lyme Street | Old Lyme, CT | [oldlymeinn.com](http://oldlymeinn.com) | [facebook.com/oldlymeinn](https://facebook.com/oldlymeinn) | (860) 434-2600



# Pampered Pets

Grooming Salon  
and Boutique

775 Boston Post Rd  
Old Saybrook, CT  
06475

# 860-388-1862



# Shore Discount Liquors

Extensive wine selection, beer, soda, liquor

Ice and lotto

FREE DELIVERY!!!!

SERVING DEEP RIVER FOR 25 YEARS

211 Main Street  
Deep River, CT 06417

860.526.5197 Phone  
860.526.5413 Fax

WnBrSeller@aol.com — [www.shorediscountliquors.com](http://www.shorediscountliquors.com)



William  
Pitt

Sotheby's  
INTERNATIONAL REALTY

**We Salute You, Miss Florence!**  
**Landlord to American Impressionism**  
**(a realtor in her own time)**

*Experience The Value Of Partnership*

## JENNIFER & JANE ASSOCIATES

*Essex Brokerage*

2015 Sales \$45,966,500

2016 YTD Sales \$13,314,999

#1 Dollar Volume Closed 2015 in all of  
Middlesex & New London Counties  
Licensed in Connecticut & Rhode Island



*Jennifer Caulfield*

860.388.7710

*Jane Pfeffer*

860.227.6634

[jenniferandjane@wsix.com](mailto:jenniferandjane@wsix.com)

[willampitt.com](http://willampitt.com)

ESSEX BROKERAGE | 13 MAIN STREET | 860.767.7488

OLD LYME BROKERAGE | 103 HALLS ROAD | 860.434.2400

Each Office is Independently Owned and Operated. Equal Housing Opportunity.



*Irving Ramsey Wiles Oil, Sold for \$175,200*

## *Winter Associates*

*Auctioneers & Appraisers*

21 Cooke Street • Plainville, CT 06062  
860-793-0288

**[www.AuctionsAppraisers.com](http://www.AuctionsAppraisers.com)**

Established in 1979, Winter Associates, Inc. is a regional leader in personal property appraisal and liquidation.

Trusted appraisers for insurance, financial planning, and estate settlement purposes, we also offer auction services ranging from the sale of a single item to leaving a home "broom clean."

Give us a call. You'll get professional advice and service and the peace of mind knowing you don't have to do it all yourself.

## YOST CONSERVATION LLC



Specializing in the restoration  
of oil paintings from the  
18th to mid-20th Centuries

Contact us today to schedule a  
time to evaluate your art work

[info@YostConservation.com](mailto:info@YostConservation.com)  
203-267-1122

[www.YostConservation.com](http://www.YostConservation.com)

THE COOPER & SMITH GALLERY

JOINS WITH

LENNON, WEINBERG, INC., NYC

TO PRESENT

**STEPHEN WESTFALL IN PERSPECTIVE  
A 15-YEAR SURVEY (2002 - 2016)**

OPENS SEPTEMBER IN ESSEX

**COOPER & SMITH**

10 Main Essex, CT [coopersmithgallery.com](http://coopersmithgallery.com) 860.581.8526





90TH ANNIVERSARY SEASON • 2016/17 GARDE ARTS CENTER PRESENTS...



# CAREFREE

DANCIN' WITH  
**FRED AND GINGER**

**Saturday, Nov. 12 • 8pm**

Directed and Choreographed by Warren Carlyle An all-new tribute—live on stage—to American cinema's most iconic dance duo, Carefree takes us on a modern musical journey through Fred Astaire and Ginger Rogers' singular on-screen partnership. Tony Award winner Warren Carlyle's innovative staging blends today's hottest Broadway hoofers with original footage from films like *Top Hat* and *Swing Time* to breathe fresh life into the pair's famous routines. Featuring tunes from the Golden Age of Hollywood musicals such as *Cheek to Cheek*, *The Way You Look Tonight*, and *Slap That Bass*—and accompanied by a swinging house band—Carefree confirms that the influence of Fred and Ginger lives on in the 21st century!

325 STATE STREET, NEW LONDON, CT | 860.444.7373 EXT. 1 | [WWW.GARDEARTS.ORG](http://WWW.GARDEARTS.ORG)

MEMBER FDIC

## COMMUNITY. BANKING.

SUPPORTING OUR COMMUNITY SINCE 1875.



**Guilford Savings Bank**  
Your Community. Your Values. Your Bank.

Florence Griswold Museum- GSB is proud to be a part of **YOUR COMMUNITY.**

# GOULD, LARSON, BENNET, MCDONNELL, QUILLIAM & McGLINCHEY, P.C.

ATTORNEYS AT LAW



Serving clients in the Connecticut Valley since 1953

JOHN S. BENNET  
KENNETH J. MCDONNELL\*  
\*Board Certified Trial Lawyer  
PAIGE S. QUILLIAM  
MICHAEL L. MCGLINCHY  
  
AMANDA J. KAPLAN

30 PLAINS ROAD  
POST OFFICE BOX 959  
ESSEX, CONNECTICUT 06426  
[www.gould-larson.com](http://www.gould-larson.com)

TELEPHONE (860) 767-9055  
FACSIMILE (860) 767-2742



## TICKETS ON SALE NOW!

### MAN OF LA MANCHA

STARRING DAVID PITTSINGER

By Dale Wasserman, Mitch Leigh and Joe Darion  
SEPTEMBER 7TH – OCTOBER 2ND

### TENDERLY: THE ROSEMARY CLOONEY MUSICAL

By Janet Yates Vogt and Mark Friedman  
OCTOBER 26TH – NOVEMBER 13TH

### BELLS OF DUBLIN: PART III A NEW YORK FAIRYTALE

Written and Directed by Jacqueline Hubbard  
DECEMBER 7TH – DECEMBER 18TH

*Proud to be a Supporter of the  
Florence Griswold Museum!*



The Clark Group  
23 Saybrook Road  
P.O. Box 995  
Essex, CT 06426  
(860) 767-0000  
(860) 767-7124 fax  
[info@the-clark-group.com](mailto:info@the-clark-group.com)

## KRONENBERGER & SONS RESTORATION

*We're Remaking History.*

MIDDLETOWN, CT  
(860)347-4600



- ♦ General Contractors
- ♦ Masonry Restoration
- ♦ Structural Stabilization
- ♦ Window Restoration
- ♦ Historic Building Consultant

[www.kronenbergersons.com](http://www.kronenbergersons.com)





We're always on the go — exercise classes, committees and speaker events. Chester Village West makes it all possible.

— **CLIFFORD & CHRIS VERMILYA**, residents since 2005

Discover more reasons to choose  
Chester Village West.  
Call (860) 333-8992 today.



[www.ChesterVillageWestLCS.com](http://www.ChesterVillageWestLCS.com)

317 West Main Street | Chester, CT 06412

Managed by Life Care Services™

700439



**The Williams School**

Small School • Big Impact



**College Prep Day School**  
Grades 6–12

**Information Sessions**  
**Sundays, 1-4 PM**

October 16 & November 20, 2016  
January 22 & May 21, 2017

**Campus Tours by Appointment**  
Transportation & Financial Aid Available

**On the campus of Connecticut College • New London, CT**  
860.443.5333 • [www.williamsschool.org/visit](http://www.williamsschool.org/visit)



Wee Faerie Village Returns

# A FLUTTER IN TIME

FAERIE HOUSES  
AROUND THE WORLD  
& ACROSS THE AGES

October 1 – 30



Visit [FlorenceGriswoldMuseum.org](http://FlorenceGriswoldMuseum.org) to learn more.

Two Sisters Design  
creative graphic solutions

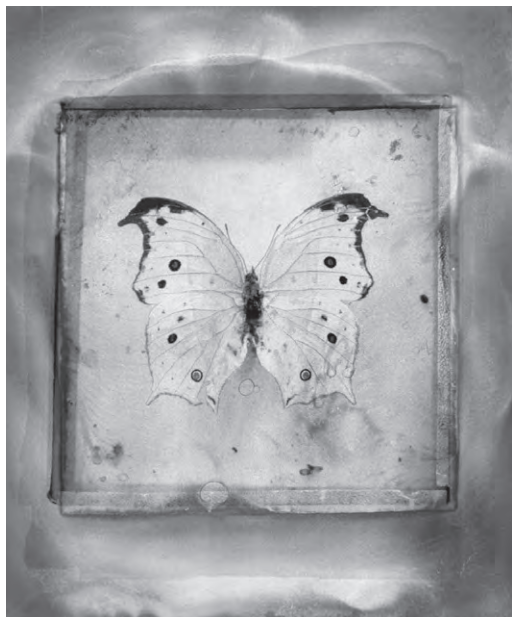
*Thank you*

FLORENCE GRISWOLD MUSEUM  
for over 15 years of partnership

*lisa@twosistersdesign.com • Lyme CT • 860.304.3220*

# IN PLACE

CONTEMPORARY PHOTOGRAPHERS ENVISION A MUSEUM



Alida Fish, Metcalf Collection #1, 2016. Pigment print transfer on oxidized aluminum.

OCTOBER 1 THROUGH JANUARY 29



**FLORENCE GRISWOLD MUSEUM**

96 Lyme Street, Old Lyme, CT, Exit 70, off I-95, 860.434.5542

[FlorenceGriswoldMuseum.org](http://FlorenceGriswoldMuseum.org)



# Helping you help others *is what matters most.*

Everyday, we live up to organizations like yours who are dedicated to making a difference in our communities.

We hope that our support will, in some way, contribute to the valuable work that you do. *After all, that's what matters most.*

**See what it's like when a bank lives up to you.  
Visit [WebsterBank.com](http://WebsterBank.com).**

**WE'RE PLEASED TO SUPPORT THE  
FLORENCE GRISWOLD MUSEUM'S  
ANNUAL BENEFIT EVENT.**



**WebsterBank**

LIVING UP TO YOU<sup>®</sup>

Webster Bank, N.A. Member FDIC, Equal Housing Lender   
©2015 Webster Financial Corporation. All rights reserved.

The Webster Symbol and Webster Bank are registered in the U.S. Patent and Trademark Office.

# INDEX

| Donors  | Item No. | Donors  | Item No.                |
|---|----------|---|-------------------------|
| Brant Amacher, Stone Mason . . . . .                    | 519      | EF Watermelon . . . . .                                 | 358                     |
| Ann Lightfoot, Inc. . . . .                             | 518      | Essence Center for Beauty & Wellness . . . . .          | 513                     |
| Anonymous . . . . .                                     | 105      | Essex Steam Train & River Boat . . . . .                | 321                     |
| Arch One Glass Studio . . . . .                         | 347-356  | Steven Evankow . . . . .                                | 509                     |
| Arne E. Ahlberg American<br>Antique Furniture . . . . . | 207      | Faces Aesthetics-Skincare . . . . .                     | 503                     |
| Del-Bourree Bach. . . . .                               | 110      | John Falstrom, Perennial Designs . . . . .              | 326                     |
| Ballek's Garden Center . . . . .                        | 526      | Ralf Feyl . . . . .                                     | 102                     |
| Serena Bates . . . . .                                  | 208      | Judy Friday . . . . .                                   | 100                     |
| Andy Baxter . . . . .                                   | 5        | Fromage Fine Foods & Coffees, LLC . . . . .             | 347-356                 |
| Mr. & Mrs. Rudolph F. Besier . . . . .                  | 114      | Susan & Emile Geisenheimer . . . . .                    | 121                     |
| Black Hall Outfitters . . . . .                         | 328      | Goodspeed Musicals. . . . .                             | 359                     |
| Black Whale Antiques . . . . .                          | 122      | Daniel Graves. . . . .                                  | 115                     |
| Jan Blencowe. . . . .                                   | 109      | Steve Gresham . . . . .                                 | 210                     |
| Bonne Sante, LLC . . . . .                              | 503      | Ted & Pamela Hamilton . . . . .                         | 6                       |
| Bravo Bravo Restaurant . . . . .                        | 329      | Daniel S. Hansen . . . . .                              | 359, 367                |
| Bridgeport Bluefish Professional Baseball . . . . .     | 361      | Hartford Yard Goats . . . . .                           | 361                     |
| Broken Arrow Nursery. . . . .                           | 521      | Mundy Hepburn . . . . .                                 | 204                     |
| Mr. & Mrs. S.E. Canaday . . . . .                       | 324      | Charles & Tammy Hinckley. . . . .                       | 330-343                 |
| Captain Lord Mansion B&B . . . . .                      | 405      | Alan Horwitz, Well Suited . . . . .                     | 502                     |
| Rick & Donna Carlson . . . . .                          | 514      | The Ivoryton Playhouse. . . . .                         | 369                     |
| Chamard Vineyards . . . . .                             | 366      | Nicole Johnson . . . . .                                | 126                     |
| Chef's Equipment Emporium . . . . .                     | 505      | Jonathan Edwards Winery. . . . .                        | 366                     |
| Chester Charter, Inc. . . . .                           | 344      | Randle Kahlr. . . . .                                   | 119                     |
| The Children's Museum . . . . .                         | 321      | Marcia & David Kalayjian . . . . .                      | 202                     |
| Connecticut Science Center . . . . .                    | 321      | Diane & Andy Kaslow . . . . .                           | 306-319                 |
| Connecticut Tigers . . . . .                            | 361      | The Katharine Hepburn<br>Cultural Arts Center . . . . . | 360                     |
| Connecticut's Beardsley Zoo . . . . .                   | 321      | Carol Klimek. . . . .                                   | 2                       |
| The Cooley Gallery . . . . .                            | 125      | Hedy & Jim Korst . . . . .                              | 108, 117, 124, 205      |
| The Copper Beech Inn . . . . .                          | 369      | Gordon Kyle. . . . .                                    | 200                     |
| Kate Cordsen . . . . .                                  | 103      | Sally & Larry Lawrence . . . . .                        | 305, 506, 507, 510, 522 |
| Mr. & Mrs. Robert Czepiel . . . . .                     | 116      | Donna Levinstone . . . . .                              | 113                     |
| Deep River Design . . . . .                             | 512      | Lori Warner Gallery . . . . .                           | 524                     |
| The Divine Wine Emporium<br>& Learning Center . . . . . | 367      | Ron Luich . . . . .                                     | 120                     |
| Dog Watch Café . . . . .                                | 329      | Madison Art Cinemas . . . . .                           | 346                     |
| Eastern Connecticut Symphony Orchestra                  | 368      | Philippa & Gaetano Mannino . . . . .                    | 4                       |
|   |          | Fred & Marie Martin . . . . .                           | 357                     |

# INDEX

| Donors  | Item No.                                 | Donors  | Item No. |
|---|--|---|----------|
| Marie Martin . . . . .                        | 210                                      | Carol Ridgway . . . . .                             | 516      |
| Maugle Sierra Vineyards . . . . .             | 366                                      | Rob Rivers, The Salon & Spa . . . . .               | 520      |
| Paul Maulucci . . . . .                       | 203                                      | Randy Robinson . . . . .                            | 521      |
| Maureen McCabe . . . . .                      | 106                                      | Salon Pure . . . . .                                | 503      |
| Timothy & Ann McCann . . . . .                | 112                                      | Saltwater Farm Vineyard . . . . .                   | 366      |
| Micro Marketing, LLC . . . . .                | 527                                      | Saybrook Point Inn & Spa . . . . .                  | 328      |
| Cynthia Miller-Aird . . . . .                 | 400                                      | Donald & Carol Schwartz . . . . .                   | 209      |
| Virginia & Timothy Millhiser . . . . .        | 500                                      | Seaside Wine & Spirits . . . . .                    | 347-356  |
| Mohegan Sun . . . . .                         | 329                                      | Isabelle D. Seggerman . . . . .                     | 511      |
| The Mohegan Tribe . . . . .                   | 402                                      | Shag . . . . .                                      | 523      |
| Deborah & Roy Moore . . . . .                 | 3  | Shannon's Fine Art Auctioneers . . . . .            | 127      |
| Marcia H. Murphy . . . . .                    | 514                                      | Peter & Henrietta Sherwin . . . . .                 | 101      |
| Musical Masterworks, Inc. . . . .             | 365                                      | Skydive Danielson . . . . .                         | 322      |
| Mystic Aquarium . . . . .                     | 325                                      | Spicer Mansion . . . . .                            | 303      |
| Mystic Seaport Rosenfeld Collection . . . . . | 123                                      | Mr. & Mrs. Robert Staab . . . . .                   | 404      |
| New Haven Symphony Orchestra . . . . .        | 345                                      | Clinton Standart . . . . .                          | 357      |
| New York City Ballet . . . . .                | 305                                      | Stonington Country Club . . . . .                   | 327      |
| The New York Pops . . . . .                   | 364                                      | Gregory Strupes . . . . .                           | 527      |
| Ocean House . . . . .                         | 362                                      | The Study at Yale . . . . .                         | 320      |
| Old Lyme Country Club . . . . .               | 323                                      | Michael Theise . . . . .                            | 118      |
| Old Lyme Inn . . . . .                        | 360                                      | Timothy Pamment Salon . . . . .                     | 504      |
| Olio Restaurant & Bar . . . . .               | 329                                      | Tory Burch, LLC . . . . .                           | 508      |
| Overland Experts, LLC . . . . .               | 301                                      | Total Design Source, LLC . . . . .                  | 515      |
| Paul C. Lirot Jewelers . . . . .              | 523                                      | Sharon Tracy . . . . .                              | 306-319  |
| Michaelle Pearson . . . . .                   | 525                                      | Treasures . . . . .                                 | 206      |
| Jacques Pépin . . . . .                       | 505                                      | UConn Athletics . . . . .                           | 361      |
| William Phillips & Barbara Smith . . . . .    | 401                                      | Vineyard Vines . . . . .                            | 527      |
| Barbara & David Preston . . . . .             | 111                                      | Vitality Spa & Holistic Health . . . . .            | 517      |
| Pura Vida Pilates . . . . .                   | 363                                      | Walt Disney World Resort . . . . .                  | 403      |
| Quassy Amusement Park & Waterpark . . . . .   | 322                                      | Nelson H. White . . . . .                           | 1        |
| Deborah Quinn-Munson . . . . .                | 107                                      | Robert & Tricia Wilber . . . . .                    | 300      |
| John & Dyanne Rafal . . . . .                 | 302, 304, 306-319,<br>322, 323, 346, 368 | Yale Peabody Museum<br>of Natural History . . . . . | 321      |
| David D.J. Rau . . . . .                      | 201                                      | Yale Repertory Theatre . . . . .                    | 320      |
| David D.J. Rau & Daniel S. Hansen . . . . .   | 501                                      | Julia Zanes . . . . .                               | 104      |
| Red 36 . . . . .                              | 329                                      |   |          |