

37<sup>TH</sup> ANNUAL BENEFIT AUCTION & DINNER DANCE

# IN CORAL SEAS

AT THE FLORENCE GRISWOLD MUSEUM

Saturday, September 21, 2019

6 PM ~ Cocktails & Silent Auction in the Kriebble Gallery

8 PM ~ Silent Auction Closes, Seated Dinner Under Tent

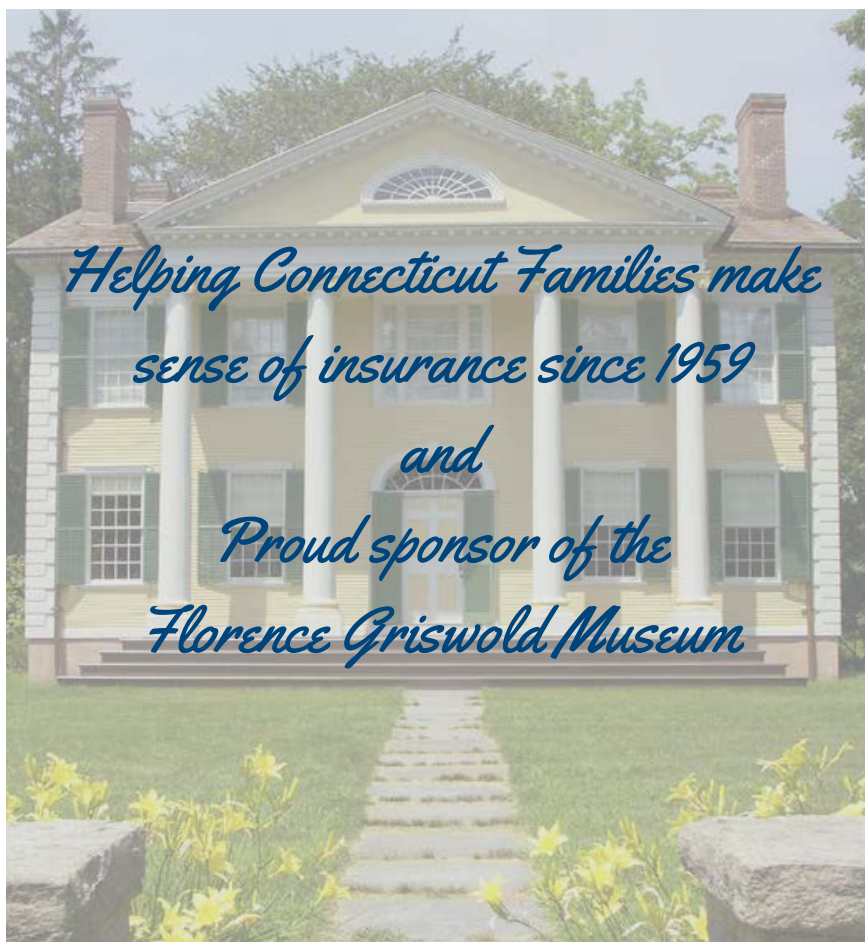
9 PM ~ Live Auction & Dessert

9:30-11 PM ~ Dancing to the Sounds of Eight to the Bar

10:15 PM ~ Pick-up & Pay for Auction Items

SPONSORED BY

Pasta Vita • Imagineers, LLC • Infiltrator Water Technologies • Bouvier Insurance  
Bogaert Construction Co., Inc. • Mountain View Landscapes, Inc. • Stephen  
Stimson Associates Landscape Architects, Inc. • Webster Bank • Blum-Shapiro



[binsurance.com](http://binsurance.com)

Old Lyme  
Waterford  
Guilford  
Westerly, RI  
800-357-2000

## IN CORAL SEAS

Please help support the Museum's most important fundraiser of the year, with all proceeds directly supporting our educational programs.

### SILENT AUCTION BIDDING INSTRUCTIONS

Bidding will begin September 21, 2019 at 6:00 p.m.

**EXPRESS CHECKOUT:** To avoid long lines at the end of the evening, please take advantage of our express checkout. Signing up is easy—look for the express checkout table located in the lobby when you first arrive. At the end of the evening, proceed directly to pick-up and claim your auction items.

**BIDDING INCREMENTS:** To place bids, print your **BID NUMBER** and the amount of your bid on bid cards located near the auction items. The minimum bidding increments are:

Value of Item	Bidding Increment
Up to \$200	\$25
\$201-\$750	\$50
\$751-\$2,000	\$100
\$2,001+	\$200

Proper bidding increments will be clearly posted on the bid board for each item. **Bids that do not meet the required bidding increments will be disqualified.** You may, of course, place bids higher than the minimum required increment.

**BID POSTING:** High bids will be posted at approximately 10:15 pm. Successful high bidders may proceed to checkout and make payment.

**PICK UP & PAY:** Auction items may be picked up at 10:15 pm Saturday or 11:00 am–1:00 pm Sunday, unless special arrangements have been made. Please make payment at the admissions desk. Cash, personal checks, Visa, Mastercard, American Express, or Discover will be accepted. The purchaser will be responsible for transporting the auction item(s).

**CONDITIONS OF SALE:** All proceeds will benefit the Florence Griswold Museum. The Museum assumes no risk, liability, or responsibility for the authenticity of the authorship or any property identified in this program. All property is sold "as is." The Museum makes no representation or warranties, expressed or implied, as to whether the purchaser acquires any reproduction rights in the property. The Museum reserves the right to dispose of the property in any manner it deems appropriate if the successful bidder does not remove the property within the agreed period of time.

## RAISE YOUR BID

Immediately following the Live Auction, Trustee Jeff Cooley will invite you to raise your bid paddle in support of an important learning and engagement tool that will impact nearly every visitor's experience here for years to come—the replacement of the educational panels in the Griswold House, Rafal Landscape Center, and Chadwick Studio. These panels are integral to telling the story of the Lyme Art Colony and the site's rich history; yet they have become exceedingly faded and discolored over time and must be replaced next year. The cost of designing and installing new panels is approximately \$50,000, and it is our hope to raise half of those funds tonight. Thank you for raising your paddle high to make this crucial educational upgrade possible!



## WINE GRAB BAG

**Opening bid: \$30 per bottle**

Take home a bottle of wine or champagne selected and donated by members of the Museum's Auction & Benefit committees, Trustees and friends of the Museum. Each bottle is valued \$30 and up with a very special bottle valued at \$400. Write in your bid number next to a corresponding item number and see your selection at the end of the evening. You might end up with an expensive bottle of wine at a bargain price!

*Donated by members of the Florence Griswold Museum's Auction & Benefit Committees, Trustees and friends of the Museum*

## THANK YOU!

*Sincere thanks to everyone who helped make our Benefit Auction such a success!*

### CORPORATE SPONSORS

Pasta Vita  
Imagineers, LLC  
Infiltrator Water Technologies  
Bouvier Insurance  
Bogaert Construction Co., Inc.  
Mountain View Landscapes, Inc.  
Stephen Stimson Associates Landscape Architects, Inc.  
Webster Bank  
Blum-Shapiro

### BENEFIT CHAIR

Susan Cartledge

### AUCTIONEER

Gus Dangremond of Christie's New York

### AUCTION CHAIR

Katie Tuttle

### AUCTION & BENEFIT COMMITTEES

Kate Bartlett  
Mary Ann Besier  
Anna Bickford  
Deetsie Bradford  
Deborah Butler  
Adam C. Calkins  
Betsey Cooley  
Jeff Cooley  
Tyler Eames  
Dianne Embree  
Monique Foster

Liz Frankel  
Nancy Hallahan  
Dan Hansen  
Diane Kaslow  
Dini Mallory  
Marie Martin  
Deborah Moore  
Rosemarie Padovano  
Ed Parsells  
Carolann Patterson  
Dennis L. Pough  
Lee Pritchard

Dyanne Rafal  
Jane Rapport  
Lisa Reneson  
Lisa Rhodes  
Judy Schoonmaker  
Theresa Sistare  
Janie Stanley  
Rebecca Steiner  
Jodi Strycharz  
Sandy Thurston  
Maureen Zavatone

### SPECIAL THANKS TO

Art Emporium, Old Saybrook  
Artisan Framing & Gallery, Niantic  
Adam Calkins & Dennis Pough, Pough Interiors, Essex  
Tammi Flynn, catalogue photography  
Julie Garvin Riggs, silent auction illustrations  
Mountain View Landscapes & Lawncare, Inc., Chicopee, MA  
The Paint Shop Inc., Old Saybrook  
Lisa Reneson, invitation & program design  
Andrew Rubenoff Design, lighting  
Shoreline Framing, Westbrook  
Studio 33, New London  
Linda Turner  
Julie Weaver  
Wholesale Frame Company, LLC, Meriden





**Congratulations  
on the opening of  
The Robert F. Schumann Artists' Trail**

*A celebration  
of art, history, and nature!*



# Salutations!

## Flo Gris



A SUSTAINABLE  
PRODUCT FOR AN  
EARTH CONSCIOUS  
GENERATION

**America's Oldest  
Handmade Rug Makers & Importers**

73 Elm Street New Haven | [kebabians.com](http://kebabians.com)

*Bogaert*  
CONSTRUCTION CO., INC.

60 PLAINS RD, ESSEX, CT 06426

860.767.8072



**Custom Homes  
Additions  
Window Replacement  
Full Remodeling Services  
Custom Millwork  
Hurricane Shutters**



Fully Insured  
New Home Lic. #170  
Remodeling Lic. #523107  
[www.bogaertconstruction.com](http://www.bogaertconstruction.com)

Family. History. Passion. Style.

**Everything pairs  
with fun.**



**MYSTIC  
AQUARIUM**

[MysticAquarium.org](http://MysticAquarium.org)

**WONDER  
WITHIN REACH**



**THE COOLEY GALLERY**  
*Fine American Art*



**Harry Leslie Hoffman**  
(1874 - 1966)

*The Coral Sea*

signed lower center right

oil on canvas

30" x 32"

25 Lyme Street, Old Lyme, Connecticut ~ 860.434.8807

[www.cooleygallery.com](http://www.cooleygallery.com)





CENTERBROOK ARCHITECTS & PLANNERS

centerbrook.com (860) 767-0175

# Musical Masterworks

Edward Arron, Artistic Director

## Join us for our 29th season!

**Saturday Concerts at 5pm | Sunday Concerts at 3pm**  
**The First Congregational Church of Old Lyme**

October 19 & 20, 2019    December 7 & 8, 2019  
 February 8 & 9, 2020

**Plus two special three-concert weekends**  
**featuring a different program at each concert to**  
**celebrate Beethoven's 250th Anniversary**



### Beethoven:

#### The Complete String Quartets

March 13, 14 & 15, 2020

May 1, 2, & 3, 2020

**Friday Concerts at 7pm**

**November 15, 2019**  
**Project Fusion Saxophone Quartet at**  
 Lyme Art Association

5:30 pm - 6:30 pm | drinks & hors d'oeuvres  
 6:30 pm - 7:30 pm | concert



**musicalmasterworks.org | 860.434.2252**

WHEREVER YOU FIND YOURSELF  
*perhaps*

*In Coral Seas*



POUGH

I N T E R I O R S

CAN HELP YOU MAKE IT HOME

One Main Street, Essex, CT 860.581.8344  
poughinteriors.com | info@poughinteriors.com



JUL  
YOGA

**Yoga**  
**where you**  
**want it.**

**CORPORATE, MOBILE & PRIVATE**  
FOR EXECUTIVES. FOR ATHLETES.  
FOR MOMS & DADS. FOR ARMED FORCES.  
FOR WORKAHOLICS. FOR EVERYONE.

4 NORWICH ROAD ♥ EAST HADDAM, CT 06423  
HELLO@JULYOGA.COM ♥ (860) 556-4988

JULYOGA.COM



# PRINTING

**it's what we do**



Catalogs Letterheads Postcards  
Envelopes Brochures Booklets  
Flyers Variable Data Mail  
Business Cards Corporate Identity

High quality commercial printer offering digital and offset printing with any finishing or mailing option imaginable. If your marketing plans include coordinated print and media projects, we can help you.

We know what works, what doesn't and how to make the most of your marketing budget.

**PRINT • MAIL • WEB**

860.229.2024 • [hitchcockprinting.com](http://hitchcockprinting.com)

**AND EVERYTHING IN BETWEEN**

**MORE  
EXPERTISE**



**MORE  
CONVENIENCE**

## **Our Shoreline Medical Center Delivers the Best Care Along the Coast**

Middlesex Health's Shoreline Medical Center in Westbrook provides 24/7 emergency services, a comprehensive Cancer Center, outpatient diagnostics, women's imaging, MRI, CT, X-ray, a full-service lab and more. We offer the expertise, advanced technology and personal attention shoreline families have trusted for nearly 50 years. And, as a member of the Mayo Clinic Care Network, our doctors have access to the knowledge of the #1 ranked hospital in the nation. It all adds up to the smarter choice for care on the shore.

**[MiddlesexHealth.org/shoreline](http://MiddlesexHealth.org/shoreline)**



BEST WISHES

**Henry E. McGuire**

BEST WISHES

**Robert M. Del Gatto**



## Serene Riverside Dining



Gourmet Galley is proud to partner with the Florence Griswold Museum to provide the finest experience in food & service!

café flo

*Gourmet Galley*  
CATERING



William  
Pitt

**Sotheby's**  
INTERNATIONAL REALTY

HAVE A  
WONDERFUL  
EVENING AT THE  
37<sup>TH</sup> FLO GRIS  
GALA EVENT.

WE HOPE IT WILL  
BE THE MOST  
SUCCESSFUL YET!



**Roger Parkman**  
203.676.1061  
rparkman@wpsir.com  
Gold Award Winner



**MJ DeRisio**  
860.304.8020  
mjderisio@wpsir.com  
Silver Award Winner

# Jeffrey N. Mehler, CFP® LLC

---

*Financial Planning  
and  
Money Management*



147 Westbrook Road  
Essex CT 06426  
Telephone: 860-767-9700  
Fax: 860-767-9701  
Email: jeff@jnmehler.com

Fee  Only

**Proudly Supports:**

**The Florence Griswold Museum**



## Hannah Childs Interior Design

2 Sill Lane, Old Lyme, CT 06371  
hannahchildsinteriordesign.com  
860.405.4394



## AN OCCASSION *to celebrate*

We are your one stop rental shop, We have all you need for your summer parties and weddings. Give us a call or stop into our showroom today!

Contact us: 800.649.2055  
chasecanopy.com  
info@chasecanopy.com

**CHASE CANOPY**  
LUXURY TENTS | EVENT RENTALS

## FARM FRESH. THREE TIMES OVER.

**RIVER  
TAVERN**

Chester, CT  
rivertavernrestaurant.com

**DINNERS  
AT THE  
FARM**

dinnersatthefarm.com

**OO  
OTTO  
OTTO  
OO**

Chester, CT  
ottochester.com

# NOTHING MORE AMERICAN

IMMIGRATION, SANCTUARY, AND COMMUNITY

AN EXHIBITION BY MATTHEW LEIFHEIT

**SEPTEMBER 28, 2019  
THROUGH MAY 24, 2020**



Matthew Leifheit, *Malik Naveed bin Rehman, Zahida Altaf, and daughter Roniya in sanctuary at the First Congregational Church, Old Lyme, 2018.* (detail)

This exhibition has been made possible with generous support from Art Bridges, the Department of Economic and Community Development, The David T. Langrock Foundation, The George A. and Grace L. Long Foundation, Mr. Charles T. Clark, The Howard Gilman Foundation, The Vincent Dowling Family Foundation, Mr. & Mrs. J. Geddes Parsons, Mr. William Blunt White, as well as donors to the Museum's Annual Fund.

## Luxury Redefined!



The New Volvo XC90, XC60, XC40, & S60  
In Stock & Ready For Immediate Delivery



**Largest Selection of new Volvo's in Eastern, CT!**



**Secor Chrysler Dodge Jeep RAM**  
409 Broad St., New London, CT  
860-443-8335



**Secor Subaru**  
501 Broad St., New London, CT  
860-442-2323



**Secor Mitsubishi SAAB Lotus**  
545 Broad St., New London, CT  
860-442-3232



**Secor Volvo**  
575 Broad St., New London, CT  
860-442-3232

# SECOR

**AUTOMOTIVE GROUP**





Proud supporter of the  
arts & education



*Imagineers is pleased to sponsor  
the Florence Griswold Museum and their  
2019 Benefit Auction & Dinner Dance*

635 Farmington Avenue  
Hartford, CT 06105-2999  
860-768-3300  
Fax 860-236-3951

249 West Street  
Seymour, CT 06483-2650  
203-463-3200  
Fax 203-463-3299

[www.imagineersllc.com](http://www.imagineersllc.com)

## LIVE AUCTION

### LOTS 1-6

AUCTIONEER GUS DANGREMOND

**1**

#### **Mahogany Birdhouse**

**Value: Unique**

Your feathery friends will revel in delight as they move into this scaled reproduction of Miss Florence's boardinghouse. Made from mahogany by HP Broom Housewright in Hadlyme, this birdhouse has two separate compartments to house two different bird families and a hinged back for cleaning out.

*Donated by HP Broom Housewright, Hadlyme, CT*



**Lot 1**

**2**

#### **Frank Vincent DuMond (1865-1951)**

**Hillside, Lyme**

**Value: \$10,000**

Oil, 28 x 30 inches. DuMond is known as one of the most influential American teacher-painters of the 20<sup>th</sup> century and a member of the Lyme Art Colony. He studied at the Art Students League in New York in the 1880s, after which he became an illustrator for New York publications such as *New York Daily Graphic*, *Century*, and *Harper's Weekly*. After additional study in Paris at the Académie Julian DuMond, he accepted a teaching position at the Art Students League in Lyme. His work can be seen in many Museums throughout the United States, including the Florence Griswold Museum.

*Donated by J. Stone & Betsey Roberts*



**Lot 2**



3

**Seven Night All-Inclusive St. Lucia Getaway for Two**

**Value: \$5,005**

Discover the best kept secret in Saint Lucia and immerse yourself in true Caribbean luxury. East Winds is a breathtaking tropical garden by the sea, set on a sandy, secluded storybook beach. Known as the island's original boutique resort, featuring 30 cottage style suites and an oceanfront beach house, East Winds is tucked away amongst lush plants, trees, and a kaleidoscope of colorful birds. As a guest you can expect personalized care, exclusive adventures, and all-inclusive service. Valid April 1, 2020–October 31, 2020. Subject to availability, blackout dates apply. Airfare not included.

*Donated by East Winds Resort, Ltd., Gros Islet, St. Lucia*



Lot 3

4

**Bamyan Tribal Fine Qashqai Rug**

**Value: \$3,257**

This stunning rug, measuring 71 x 104 inches, was hand knotted in northern Afghanistan by Turkmen women using handspun, vegetable dyed wool from Karakul sheep that graze along the slopes of the Hindu Kush. The designs in vibrant reds, blues and greens are based on antique tribal and village rugs.

*Donated by Kebabian's Rugs, New Haven, CT*



Lot 4

5

**Highlights of the Mississippi River Cruise**  
**Value: \$6,000**

Enjoy American Cruise Lines' five-day round-trip *Highlights of the Mississippi River* cruise for two aboard one of their beautiful new paddlewheelers. The winner will be treated to a spacious private balcony AAL stateroom offering all-inclusive fine dining, complimentary cocktails each evening, complimentary beer & wine with lunch and dinner, and complimentary shore excursions at each port. The cruise also includes a complimentary pre-cruise hotel night in New Orleans, providing extra time for guests to explore this magical city. Guests will travel to picturesque ports-of-call: including the magnificent Houmas House Plantation, Baton Rouge, and Oak Alley. Cruise must depart before December 2020. Airfare not included.

*Donated by American Cruise Lines, Guilford, CT*



Lot 5

6

**Intimate Dinner for Eight on the Museum Riverfront**

**Value: Unique**

You and seven guests will enjoy passed hors d'oeuvres plus wine and beer donated by Jonathan Edwards Winery and Thimble Islands Brewing Company on the Museum's veranda at 5pm followed by a private tour of the current exhibition led by a member of the Museum's curatorial team. At 6pm walk down to the new overlook along the *Robert F. Schumann Artist's Trail* where you will take in breathtaking views of the Lieutenant River as you dine on a 3-course meal prepared and catered by Gourmet Galley, the purveyors behind Café Flo. Date to be mutually agreed upon during June 2020, excluding Saturdays.

*Donated by Gourmet Galley Catering, North Stonington, CT; Jonathan Edwards Winery, North Stonington, CT; Thimble Island Brewing Company, Branford, CT; and Florence Griswold Museum, Old Lyme, CT*



Lot 6

## SILENT AUCTION

## PAINTINGS 🦀 LOTS 100-129

### LOTS 100-129

#### PAINTINGS

#### 100

**Chet Reneson**

*Sail Boat at Sunset*

**Value: \$4,000**

**Opening Bid: \$1,600**

**Bidding Increment: \$200**

Watercolor, 14 x 20 inches. Chet Reneson of Lyme, CT is one of the country's finest sporting artists. In 1982, he was named Artist of the Year by three sporting and conservation organizations, and many more awards followed. His watercolors capture the imagination of the viewer with their evocative images and bold colors.

*Donated by Judy Cotton*



Lot 100

#### 101

**Brian Keith Stephens**

*Fly Bye*

**Value: \$2,700**

**Opening Bid: \$1,100**

**Bidding Increment: \$200**

Oil, 11 1/2 x 15 inches. Brian Stephens received his Bachelor of Fine Arts from the Lyme Academy College of Fine Arts in Old Lyme and his Masters of Fine Arts from the City College of New York. Simple images of animals and of the people that he loves



Lot 101

are placed on abstract backgrounds created by overlays of large frantic brush strokes in bold colors. Since 2000 he has exhibited in solo shows and group exhibitions in the United States, Germany, France, Denmark, Holland, Bulgaria, and Italy.

*Donated by the Artist*

#### 102

**Lori Warner**

*Nest II*

**Value: \$1,800**

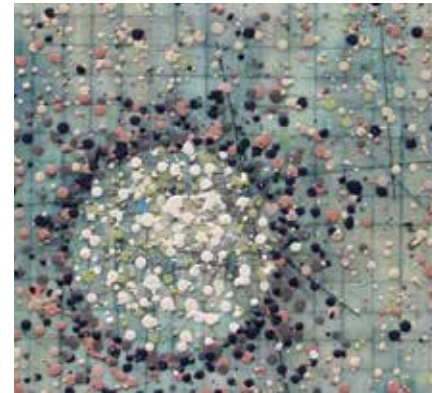
**Opening Bid: \$720**

**Bidding Increment: \$100**

Encaustic painting, 17 x 17 inches, 2015.

Lori Warner studied a wide variety of drawing and painting classes at the Lyme Academy College of Fine Arts in the late 1980s before receiving a BFA in printmaking from the Rhode Island School of Design in Providence. Considered a master printer of monotypes, she has received national recognition for her printmaking. She is also the owner of Lori Warner Studio/Gallery in Chester, CT.

*Donated by the Artist*



Lot 102

#### 103

**Leif Nilsson**

*From Chester Ferry North*

**Value: \$1,800**

**Opening Bid: \$700**

**Bidding Increment: \$100**

Pastel, 5 1/2 x 9 1/4 inches, 1990. Nilsson completed a full curriculum of Classical Studies at the Lyme Academy College of Fine Arts in Old Lyme, CT. He then traveled to Scandinavia, Anatolia and Europe where he studied French 19<sup>th</sup> and early 20<sup>th</sup> century painters to enhance his education. His works have won many "Best in Show" awards and are featured in many private and public collections.

*Donated by the Estate of Susan Minot Woody*



Lot 103



Lot 104

#### 104

**Jac Lahav**

*American George*

**Value: \$1,400**

**Opening Bid: \$560**

**Bidding Increment: \$100**

Gouache and gold leaf on panel, 12 x 14 inches, 2019. Born in Israel, Jac Lahav grew up in Boston and received a Bachelor of Arts degree in psychology from Wesleyan University in Connecticut. He studied painting at the School of Visual Arts and The Cooper Union and received his Master of Fine Arts degree from Brooklyn College, New York in 2008. His series of paintings *48 Jews* and *The Great Americans* employ portraiture to question basic assumptions about the relationship of historical memory and collective identity. These works have been shown in several museums across the United States, including The Great Americans exhibition on view at FGM earlier this year.

*Donated by the Artist*



**105**

**James Prosek**

*Feather*

**Value: \$1,200**

**Opening Bid: \$480**

**Bidding Increment: \$100**

Watercolor on paper, 8 x 10 inches, 2019.

James Prosek is a Connecticut-based artist, writer, and naturalist. He is a graduate of Yale University and has authored more than thirteen books on art and nature. His works have been shown at museums throughout the United States, most recently in FGM's *Fragile Earth: The Naturalist Impulse in Contemporary Art*. Prosek has written for *The New York Times* and *National Geographic Magazine* and has also won a Peabody Award in 2003 for his documentary film work.

*Donated by the Artist*

*Framing donated by The Paint Shop, Inc., Old Saybrook, CT*



Lot 105

**106**

**Katherine Simmons**

*Mount Archer Woods, Lyme, CT*

**Value: \$1,100**

**Opening Bid: \$450**

**Bidding Increment: \$100**

Oil, 11 x 14 inches, 2011. Katherine Simmons holds a Fine Arts degree from the Massachusetts College of Art and completed postgraduate studies at Paier College of Art and the University of Hartford. She is an elected member of



Lot 106

several professional art organizations, and her work has been featured in publications such as *Connecticut Magazine* and *The Pastel Journal*. Kathy has also been twice awarded First Place in the Annual Elected Artist Exhibition of the Lyme Art Association.

*Donated by the Artist*

**107**

**Adrien Broom**

*Framed Oyster Mushrooms*

**Value: \$1,000**

**Opening Bid: \$400**

**Bidding Increment: \$100**

Photograph, 8 x 10 inches, 2019. Adrien Broom is a fine art photographer who has always loved food and appreciated the beauty in what nature provides. *Farm-to-Camera* is a combination of her favorite things: nature, food, photography, and collaboration. Informed by a rich education in fine and decorative art in Florence and London, Broom's photographs combine the sensuality of classical painting with the modern techniques of photography. Broom currently lives and works between New Haven, CT, and Brooklyn, NY. This piece is from her *Farm-to-Camera* series as seen in the spring issue of *Edible CT East*. Broom was a featured artist of FGM's *In Place: Contemporary Photographers Envision a Museum* exhibition in 2016.

*Donated by the Artist*

*Framing donated by Studio 33, New London, CT*



Lot 107



Lot 108

**108**

**Adrien Broom**

*Framed Garlic Scapes*

**Value: \$1,000**

**Opening Bid: \$400**

**Bidding Increment: \$100**

Photograph, 8 x 10 inches, 2019. See item 107 for full biographical information.

*Donated by the Artist*

*Framing donated by Studio 33, New London, CT*

**109**

**Judy Friday**

*Crazy Quilt*

**Value: \$900**

**Opening Bid: \$375**

**Bidding Increment: \$100**

Etching ink, 23 x 23 inches, 2017. Judy Friday is a prolific Lyme artist who turns her creative eye to many mediums. She studied at the Lyme Academy College of Fine Arts and with Robert Reed of Yale. Her work has been exhibited widely throughout New England and the Midwest.

*Donated by Anonymous*



Lot 109

**110**

**E. Greco**

*Tranquility Farm*

**Value: \$900**

**Opening Bid: \$375**

**Bidding Increment: \$100**

Oil, 35 1/2 x 21 1/2 inches. Greco is a self-taught artist who lived most of his life in New York City. In 1980, he purchased a farm house in New York's Hudson Valley, which inspired him to paint. Currently he resides in Sherman, CT and exhibits his work across New England. He has had one-man exhibitions in Brookfield and New Milford, CT and in New York City.

*Donated by Elisabeth Wilds*



Lot 110

**111**

**Mark Dion**

*The Paleontology Library*

**Value: \$900**

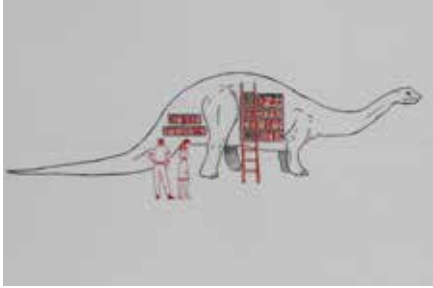
**Opening Bid: \$360**

**Bidding Increment: \$100**

Screenprint, 13 1/2 x 19 inches, 2018. Mark Dion received a BFA from the Hartford Art School of the University of Hartford in 1986 and an honorary doctorate in 2002. He also attended the School of Visual Arts in New York and the Whitney Museum of American Art's Independent Study Program. He is an Honorary Fellow of Falmouth University in the UK and has a Doctor of Humane Letters (Ph.D.) from the Wagner Free Institute of Science in



## PAINTINGS LOTS 100-129



Lot 111

Philadelphia. Dion has received numerous awards for his works which have appeared in many exhibitions throughout the United States and Europe, most recently in FGM's *Fragile Earth: The Naturalist Impulse in Contemporary Art*.

*Donated by the Artist*

*Framing donated by Julie Weaver and Wholesale Frame Company, LLC, Meriden, CT*

### 112

**Helen Cantrell**

***Black Birds, White Snow***

**Value: \$750**

**Opening Bid: \$300**

**Bidding Increment: \$50**

Oil on board, 16 x 16 inches, 2015. Helen Cantrell majored in painting at the Washington University of Fine Arts in St. Louis, MO. In 1968, she moved to New York City, where she attended the Art Students League. She has lived along the northeastern coast for the past 40 years, currently in Old Lyme. She is an elected member of the Silvermine Guild of Artists, and her works have been displayed in many local solo and group exhibitions.

*Donated by the Artist*



Lot 112

### 113

**Del-Bourree Bach**

***Solo***

**Value: \$750**

**Opening Bid: \$300**

**Bidding Increment: \$50**

Acrylic on board, 5 x 5 inches, 2019. Del-Bourree Bach is a signature and board member of the American Society of Marine Artists. His works are included in many private and public collections, and he has received over 200 awards in regional, national and international competitions.

*Donated by the Artist*



Lot 113

## PAINTINGS LOTS 100-129



Lot 114

### 114

**Janet Lage**

***HOSE 4***

**Value: \$600**

**Opening Bid: \$250**

**Bidding Increment: \$50**

Oil, graphite, and ink on rag paper, 4 x 4 inches, 2010. Janet Lage began working in her Old Lyme studio in 1982. In 2010 she was awarded a Connecticut Artist Fellowship for painting and in 2016 received the first place award from The New Britain Museum of American Art's *Nor'Easter* exhibition. Her works appear in many public and private collections throughout the United States.

*Donated by the Artist*

### 115

**Sears Gallagher (1869-1955)**

***On the Golf Course***

**Value: \$600**

**Opening Bid: \$250**

**Bidding Increment: \$50**

Etching, 12 x 7 inches, post 1920. After studying in Paris, Sears Gallagher became a well-known painter, etcher, and teacher in the Boston area. He frequented Monhegan Island and was much inspired by the surrounding landscape. He has over 200 etchings in the Metropolitan



Lot 115

Museum of Art collection, in addition to the Boston Museum of Fine Arts, the Art Institute of Chicago, and the Honolulu Academy of Art.

*Donated by Anne Burr Czepiel*

*Framing donated by Art Emporium of Old Saybrook, Old Saybrook, CT*

### 116

**Thomas Nason (1885-1971)**

***The Farm***

**Value: \$600**

**Opening Bid: \$250**

**Bidding Increment: \$50**

Copper engraving, pencil signed, 9 1/4 x 4 inches, 1944. Working from his studio on Joshuatown Road in Lyme, printmaker Thomas W. Nason built a lasting reputation for his deliberate and stark wood engravings of rural New England life, many of which were created to accompany treasured poems by Robert Frost. Nason's stirring pastorals and meditations on nature and regional architecture encourage a poetic reading of his prints, including this one.

*Donated by the Estate of Susan Minot Woody*

*Framing donated by Artisan Framing & Gallery, Niantic, CT*



Lot 116

## PAINTINGS LOTS 100-129



Lot 117

**117**

**Tom Rose**  
*Dauntless & Mohawk*  
**Value: \$530**  
**Opening Bid: \$200**

**Bidding Increment: \$50**  
Giclée, 28 x 32 inches. In addition to owning and operating Black Whale Antiques at Rattleberry Farm in Hadlyme for 30 years, Tom Rose's artwork has appeared in numerous national magazines, including *House Beautiful*, *Country Living*, and *Colonial Homes*.

*Donated by Tom Rose and Black Whale Antiques, Hadlyme, CT*

**118**

**Don Carter (Edgar Allan Slothman)**  
*Columbia Jay*  
**Value: \$500**

**Opening Bid: \$200**  
**Bidding Increment: \$50**  
Acrylic/digital collage, 24 x 36 inches. Don Carter is a creative director, designer and illustrator. A graduate of Paier College of Art in Hamden, Don has over thirty years of experience designing and art directing for Connecticut ad agencies and in 2017 was inducted into the Connecticut Art Directors Hall of Fame. He has illustrated seven children's books and created two interstitial series for Disney Junior. In



Lot 118

2012, under his pseudonym, Edgar Allan Slothman, he set out with an Apple computer to reinterpret Audubon's *Birds of America* in his own simplified, graphic style. This is an example of that work.

*Donated by the Artist*

**119**

**Christopher B. Steiner**  
*Madonna (After Giotto, Madonna and Child, ca. 1310)*  
**Value: \$500**

**Opening Bid: \$200**  
**Bidding Increment: \$50**  
Digital photomontage with lightfast inks on Hahnemühle matte finish photo rag paper, 4 from the edition of 4 + 2APs, 16 x 20 3/4 inches, 2015. Christopher B. Steiner is the Lucy C. McDannel '22 Professor of Art History and Anthropology at Connecticut College, where he also serves as Founding



Lot 119

## PAINTINGS LOTS 100-129

Director of the Museum Studies Program. Using photomontage as his medium of choice, Steiner deconstructs iconic or cliché images and well-rehearsed art-historical traditions to invite alternative readings. His interventions are meant to surprise, delight, destabilize, and sometimes even shock. His work was featured in 2016 at the Lori Warner Gallery in Chester.

*Donated by the Artist*

**120**

**Will Hutchins (1878-1945)**  
*View off the Coast of Maine*  
**Value: \$500**

**Opening Bid: \$200**  
**Bidding Increment: \$50**  
Watercolor, 13 x 19 inches, 1924. Will Hutchins earned his BA at Yale in 1901 and the BFA in 1909, earning Phi Beta Kappa honors and class awards for his high-minded essays on art and spirituality. He also studied under the legendary Jean Paul Laurens in Paris at the Academie Julien. Hutchins exhibited at the Pennsylvania Academy of the Fine Arts, the Boston Art Club, and the Corcoran Gallery of Art in Washington, DC. In 1925 he joined the faculty at American University in Washington, DC where he chaired the Art Department until his death.

*Donated by Shannon's Fine Art Auctioneers, Milford, CT*



Lot 120



Lot 121

**121**

**Frederick R. Wagner (1864-1940)**  
*Kids By the Shore*  
**Value: \$500**

**Opening Bid: \$200**  
**Bidding Increment: \$50**  
Pastel, 10 1/2 x 8 inches. Born in Port Kennedy, PA in 1864, Frederick R. Wagner enrolled at the Pennsylvania Academy of the Fine Arts where he served as chief demonstrator of anatomy to the life classes and studied under Thomas Eakins. He then traveled to California where he began painting before returning to Philadelphia and taking a job as illustrator for the Philadelphia Press. He often painted impressionist urban scenes and in 1912 founded the Addington School of Painting. His modernist work is sought after by many collectors of the avant-garde movement.

*Donated by Ruud H. Bergmans and Ann B. Lane*

**122**

**Catherine Christiano**  
*Hen and Rooster, The Hay House*  
**Value: \$490**

**Opening Bid: \$200**  
**Bidding Increment: \$50**  
Oil, 6 x 8 1/2 inches. Catherine Christiano was born and raised in suburban central New Jersey where she studied in drawing



## PAINTINGS LOTS 100-129



Lot 122

and painting part-time. A move to Connecticut prompted her to fully focus on art, and she received a BFA in 2001 from Lyme Academy College of Fine Arts. Her work has been published in *American Artist Drawing* and *The Journal of the American Medical Association*. She also designed the seal for the Town of Old Lyme. Catherine has exhibited her work throughout the Northeast, New York City, and Los Angeles.  
*Donated by the Artist*

### 123

**Frederick R. Wagner (1864-1940)**

***Beach Scene***

**Value: \$400**

**Opening Bid: \$150**

**Bidding Increment: \$50**

Pastel, 4 1/2 x 4 1/4 inches. See item 121 for full biographical information.

*Donated by Ruud H. Bergmans and Ann B. Lane*



Lot 123

### 124

**Catherine M. Elliott**

***Bridge, Spring Morning***

**Value: \$450**

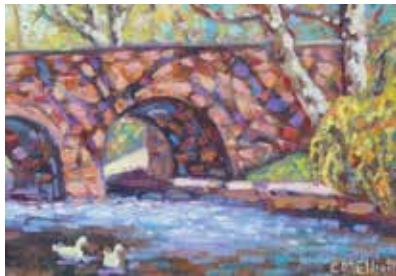
**Opening Bid: \$200**

**Bidding Increment: \$50**

Oil on canvas, 8 1/2 x 11 1/2 inches.

Catherine Elliott is a leading practitioner of Contemporary Impressionism, a style that applies the techniques of masters like Claude Monet to the modern American landscape. Elliott explores the connection between color and light, invoking a wide palette of colors to capture the beauty of gardens and countrysides. The artist's work has been included in a number of distinguished private and public art collections.

*Donated by the Artist*



Lot 124

### 125

**Catherine Christiano**

***Huntley Brown House***

**Value: \$390**

**Opening Bid: \$150**

**Bidding Increment: \$50**

Watercolor, 8 x 7 1/2 inches, 1996. See item 122 for full biographical information.

*Donated by the Artist*

## PAINTINGS LOTS 100-129



Lot 125

### 126

**Betsy Barry**

***Asparagus & Onion***

**Value: \$350**

**Opening Bid: \$150**

**Bidding Increment: \$50**

Colored pencil, 16 x 20 inches. Betsy Barry is a botanical and nature artist who works by studying the subject and drawing directly from life, where she captures its beauty in colored pencil, graphite pencil or pen and ink. In 2015 she completed the Distance Learning Diploma Course with the Society of Botanical Artists in London, where she graduated with distinction. She is a member of the American Society of Botanic Artists, Colored Pencil Society of America, Guild of Natural Science Illustrators, Lyme Art Association, and Mystic Art Association.

*Donated by the Artist*



Lot 126



Lot 127

### 127

**Colin Waddington**

***Red Farmhouse***

**Value: \$350**

**Opening Bid: \$150**

**Bidding Increment: \$50**

Oil, 28 x 21 inches. Colin Waddington received his BFA in Painting from Lyme Academy College of Fine Arts.

*Donated by Rebecca & Christopher Steiner*

### 128

**Winslow Homer (1836-1910)**

***Gathering Berries***

**Value: \$300**

**Opening Bid: \$150**

**Bidding Increment: \$50**

Woodblock engraving, 9 1/8 x 13 1/2 inches, 1874. Winslow Homer became one of the all-time leading figures in American



Lot 128



## PAINTINGS LOTS 100-129

art, known for his marine paintings and portrayals of American life. He was essentially self-taught and became the leading illustrator from 1859-1874, working with *Ballou's Pictorial* in Boston and *Harper's Weekly* in New York. This image represents one of the famous Gloucester Series and was published in *Harper's Weekly* in 1874 (July 11 Edition).

*Donated by Ron Luich*

*Framing donated by Shoreline Framing, LLC, Westbrook, CT*

**129**

**Renni Ridgeway-Korsmeyer**

**Bauer Farm**

**Value: \$275**

**Opening Bid: \$100**

**Bidding Increment: \$50**

Oil, 9 1/2 x 7 1/2 inches. Renni Ridgeway-Korsmeyer discovered her love of painting in the Old Lyme art community. She works in oils and pastels and is an elected artist of the Essex Art Association, Madison Art Society, Guilford Art League, and an associate artist in the Lyme Art Association, Clinton Art Society and the Mystic Art Association. Her work can be found in private collections in Connecticut, New England, and throughout the United States.

*Donated by the Artist*



**Lot 129**

## DECORATIVE ARTS

~~~~~ **LOTS 200-214** ~~~~~



**Lot 200**

**200**

**Courtney Mattison**

**Hope Spots: Sargasso Sea II**

**Value: \$2,700**

**Opening Bid: \$1,000**

**Bidding Increment: \$200**

Glazed stoneware and porcelain, 18 x 18 x 6 inches, 2015. Courtney Mattison received a Bachelor of Arts degree in marine ecology and ceramic sculpture from Skidmore College and a Master of Arts degree in environmental studies from Brown University with coursework at the Rhode Island School of Design. Now based in Los Angeles, Mattison creates intricately detailed ceramic sculptural works inspired by the fragile beauty of coral reefs and the human-caused threats they face. Her work has been exhibited throughout the world to raise awareness for the protection of the oceans. This piece was featured in the exhibition *Fragile Earth: The Naturalist Impulse in Contemporary Art*, which was on view at FGM June 1–September 8, 2019.

*Donated by the Artist*

**201**

**Black Walnut Coffee Table**

**Value: \$1,800**

**Opening Bid: \$700**

**Bidding Increment: \$50**



**Lot 201**

Take home a piece of FGM history with this handsome coffee table made from reclaimed black walnut from the 100-year-old tree that was removed from the Museum's grounds in June 2018. The tree was reported to have been the ninth largest black walnut in Connecticut, and now it can forever live on in your home!

*Donated by City Bench, Higganum, CT*

**202**

**Napoleon III Armchair**

**Value: \$750**

**Opening Bid: \$300**

**Bidding Increment: \$50**

Take home this handsome late-19<sup>th</sup> century Napoleon III armchair featuring clawed feet with a caned seat and cushion. Black finish with gold accents and in pristine condition.

*Donated by Andrew & Diane Kaslow*



**Lot 202**

## DECORATIVE ARTS LOTS 200-214



Lot 203



Lot 204

**203**

**Pair of Crystal Window Table Lamps**

**Value: \$600**

**Opening Bid: \$250**

**Bidding Increment: \$50**

This striking Vienna Full Spectrum lamp adapts the best of mid-century modern design with a contemporary flair. The translucent crystal glass rectangular lamp body has a clean, impressive look, while the off-white linen shade complements the linear form. Lamp including shade is 26 1/2 inches high x 17 inches wide.

*Donated by Mr. & Mrs. Rudolph F. Besier*

**204**

**David D.J. Rau**

***A-Faerie-Can Gothic, 2019***

**Value: \$500**

**Opening Bid: \$250**

**Bidding Increment: \$50**

A wee faerie version of Grant Wood's iconic painting *American Gothic*, in a gothic-revival clock case. Approx. 12 x 7 x 3-1/4 inches. These hard-working midwestern faeries take a break from their day to greet you with a stoic smile atop their mushroom perches. Created by the Museum's Director of Education & Outreach.

*Donated by the Artist*

**205**

**Jennifer Angus**

***Untitled***

**Value: \$500**

**Opening Bid: \$200**

**Bidding Increment: \$50**

*Goliath Orientalis* with feathers under a domed cloche, 7 x 9 inches, 2019. Jennifer Angus is a professor of Design Studies at the University of Wisconsin in Madison. She received a BFA from the Nova Scotia College of Art and Design in Canada and her MFA from the School of the Art Institute of Chicago. She has exhibited her work throughout the United States, Australia, Canada, Germany, Japan and Spain. Angus specializes in transforming historic spaces and blank gallery walls with a confounding medium: preserved exotic insects as seen in FGM's historic boarding house during *Fragile Earth: The Naturalist Impulse in Contemporary Art* exhibit. (Her installation remains on view until November 10, 2019.) This insect under cloche is an example from that exhibit.

*Donated by the Artist*

## DECORATIVE ARTS LOTS 200-214



Lot 205

**206**

**Vintage Fire Screen Depicting an Early American Floral Bouquet**

**Value: \$500**

**Opening Bid: \$200**

**Bidding Increment: \$50**

Elegant vintage mahogany Queen Anne style fire screen, 53 inches tall x 19 inches wide, depicting an oil on velvet early American floral bouquet in the theorem style by the award-winning artist and instructor Mary L. Avery.

*Donated by Mr. & Mrs. Rudolph F. Besier and Mary L. Avery*



Lot 206

**207**

**Antique Child's Chair**

**Value: \$375**

**Opening Bid: \$150**

**Bidding Increment: \$50**

Late 19th or early 20th century antique French provincial child's chair upholstered in black and white toile. Would make a perfect accent piece in any room in the home.

*Donated by Mr. & Mrs. Rudolph F. Besier*



Lot 207

**208**

**Vintage Gold Mirror**

**Value: \$350**

**Opening Bid: \$150**

**Bidding Increment: \$50**

Measures 28 x 24 inches. Vintage gold wall mirror, circa 1925. Its beautiful simplicity makes it a perfect accent in any setting.

*Donated by Mr. & Mrs. Rudolph F. Besier*



Lot 208



Lot 209

## 209

**Jared Welcome**  
**Gnome Sweet Gnome Home**  
**Value: \$300**  
**Opening Bid: \$150**  
**Bidding Increment: \$50**

A fantastical addition to your woodland garden. Take home this gnome home carved out of wood by Jared Welcome of Jare Bear Carvings and featured in FGM's 2018 *Wee Faerie Village Lettersburg Junction* exhibit representing the letter G. Measures 2 x 2 x 3 feet.

*Donated by the Artist*

## 210

**Vase by Mundy Hepburn**  
**Value: \$250**  
**Opening Bid: \$100**  
**Bidding Increment: \$50**

Purple and white hand-crafted blown glass vase, 9 1/2 x 5 inches. Mundy Hepburn has made a name for himself with a unique style of art—luminous glass. His glass art has been exhibited in over thirty installations and featured in various publications. He also specializes in static sculptures, including bowls, cups, flowers, and both indoor and outdoor standing sculptures.

*Donated by the Artist*



Lot 210

## 211

**Cherry and Mahogany Stand**  
**Value: \$250**  
**Opening Bid: \$100**  
**Bidding Increment: \$50**

This American cherry and mahogany stand, with a mahogany ogee drawer, c.1865, will make for a handsome end table or night table in your bedroom, living room or front hall.

*Donated by Arne E. Ahlberg American Antique Furniture, Essex, CT*



Lot 211



Lot 212

## 212

**Bank of New England, Bank Notes**  
**Value: \$250**  
**Opening Bid: \$100**  
**Bidding Increment: \$50**

A sheet of uncut bank notes from the mid 19th century issued by the Bank of New England and featuring a one, two, and five dollar bill. Measures 7 3/4 x 12 inches.

*Donated by Hedy & Jim Korst*

## 213

**Stonington Bank, Bank Notes**  
**Value: \$250**  
**Opening Bid: \$100**  
**Bidding Increment: \$50**

A sheet of uncut bank notes from the mid 19th century issued by Stonington Bank, CT and featuring a one, two, and three dollar bill. Measures 7 3/4 x 12 inches.

*Donated by Hedy & Jim Korst*



Lot 213

## 214

**Decorative Throw Pillow**  
**Value: \$200**  
**Opening Bid: \$75**  
**Bidding Increment: \$25**

Add some pizzazz to any room in your home and dress up a sofa or armchair with this striking mauve pillow adorned with tufted tassels on the front of a removable cover. Measures 20 x 20 inches.

*Donated by Janie & Alix Stanley*



Lot 214



# EVENTS TO REMEMBER

~~~~~ LOTS 300-393 ~~~~~

## 300

**Spend a Day Training with Overland Experts**

**Value: \$1,350**

**Opening Bid: \$550**

**Bidding Increment: \$100**

Tap into your sense of adventure and experience the outdoors in a whole new way—by learning the science of off-road and 4x4 vehicle driving. Go where others cannot—or dare not—as you and three friends spend one day training with Overland Experts. Valid for one year.

*Donated by Overland Experts, LLC, East Haddam, CT*



Lot 300

## 301

**New York City Ballet, Backstage Tour and Autographed Shoes**

**Value: \$500**

**Opening Bid: \$200**

**Bidding Increment: \$50**

Immerse yourself in a truly magical evening at the ballet, reveling in the beauty of the dance both on stage and behind-the-scenes at the New York City Ballet. The winner will receive two orchestra tickets for the performance of your choice during the 2019-2020 repertory season at the



Lot 301

David H. Koch Theater, while also having the unforgettable experience of watching a rehearsal and receiving a backstage tour (Tuesdays through Fridays, in the afternoon). Your souvenir will be a pair of pointe ballet shoes worn and autographed by Ballerina Sterling Hyltin. Performance selection is subject to ticket availability. Valid through May 31, 2020.

*Donated by Sally & Larry Lawrence and the New York City Ballet*

## 302

**Foursome of Golf at Stonington Country Club**

**Value: \$472**

**Opening Bid: \$200**

**Bidding Increment: \$50**

Treat yourself to 18 holes of golf at Stonington Country Club. Enjoy a weekday foursome with carts on this private, par 72 championship course. Tucked away off a country road among 140 acres of rolling hills and meadows, Stonington Country Club is in one of Connecticut's most beautiful pastoral golf settings. Weekdays only. Proper dress and etiquette required. Some restrictions may apply. Valid for one year.

*Donated by Stonington Country Club, Stonington, CT*

# EVENTS TO REMEMBER



LOTS 300-393



Lot 302

## 303

**Golf and Lunch at Old Lyme Country Club**

**Value: \$460**

**Opening Bid: \$200**

**Bidding Increment: \$50**

Work on your golf game with 9 holes and two carts for four players at Old Lyme Country Club. Analyze your game afterwards over lunch at the club. Alcoholic beverages and gratuity not included. Proper attire and advance reservations required. Expires Nov. 30, 2019.

*Donated by Old Lyme Country Club, Old Lyme, CT and Howard G. Tuttle, Jr.*

## 304

**Romantic Dining Experience for Two Atop the Newburyport Lighthouse**

**Value: \$450**

**Opening Bid: \$200**

**Bidding Increment: \$50**

You're invited to a once-in-a-lifetime experience that is offered no where else



Lot 304

in the world—a gourmet meal at the top of a lighthouse with a breathtaking panoramic view of Newburyport, MA! The evening will begin when your server greets you at the base of the lighthouse. You will then climb 55 stairs, a 6 foot ladder, and go through a hatch to a small (8x8 foot) space where you will enjoy a catered meal from your choice of five local restaurants. You will need to bring your own alcoholic beverages and can bring along some romantic music on a CD or Ipod. Reservations required.

*Donated by The Lighthouse Preservation Society, Dover, NH and Daniel S. Hansen & David D.J. Rau*

## 305

**Jazz Brunch for Six at Ocean House**

**Value: \$408**

**Opening Bid: \$200**

**Bidding Increment: \$50**

Enjoy Sunday jazz brunch for six at Seasons in the breathtaking Ocean House located in Watch Hill, RI. Seasons transforms into a food emporium with a raw bar featuring the freshest seafood, a house-made pastry and dessert display, a selection of local artisanal cheeses, and a charcuterie. Enjoy classic breakfast staples and a variety of buffet items, as well as unlimited sparkling wine and a made-to-order crêpe station. Relax with musician Greg Piccolo performing a combination of jazz, blues and soul. Valid November–April only. Reservations required and holidays excluded. Alcoholic beverages and gratuity not included. Expires November 30, 2020.

*Donated by Ocean House, Watch Hill, RI*

## EVENTS TO REMEMBER LOTS 300-393



Lot 306-313

### 306-313

#### Burgers and Boules at the Cooleys

**Opening Bid: \$150**

Join Jeff and Betsey at their home in Old Lyme for a casual evening of exploring your inner Francophile with burgers and boules! A game for all ages, "boules" or more specifically, "petanques," is France's answer to bocce and a favorite past time. Prior experience is not necessary. The evening will start with lively competition, French wines or cocktails and hors d'oeuvres around the boules court, followed by a casual dinner of grass fed burgers of beef and lamb cooked on a natural charcoal fire and served with salads and French inspired side dishes. Come for fun! Saturday, June 13, 2020 at 5:30 pm. Limited to 8 guests.

*Donated by Jeff & Betsey Cooley*

### 314

#### Musical Masterworks

**Value: Unique**

**Opening Bid: \$200**

**Bidding Increment: \$50**

2020 marks the 250<sup>th</sup> anniversary of the birth of Ludwig van Beethoven, and to celebrate, Musical Masterworks will present the complete cycle of Beethoven's String Quartets performed by the world-class Ehnes Quartet. The winning bidder

will receive two tickets to each of the six performances on March 13, 14, 15, 2020 and May 1, 2, 3, 2020 at the First Congregational Church of Old Lyme.  
*Donated by Musical Masterworks, Inc., Old Lyme, CT*



Lot 314

### 315

#### Eastern Connecticut Symphony Orchestra & 385 Bank

**Value: \$370**

**Opening Bid: \$150**

**Bidding Increment: \$50**

Take in one performance of your choice at the Eastern Connecticut Symphony Orchestra with four tickets in Section A, valid for the 2019-2020 concert season at The Garde Arts Center. Concert dates are October 26, 2019, November 23, 2019, February 1, 2020, February 29, 2020, March 28, 2020, and April 25, 2020. Plus enjoy classic dining with a twist at 385 Bank in New London with a \$150 gift certificate.

*Donated by Eastern Connecticut Symphony Orchestra, New London, CT and Katie Tuttle*

### 316

#### BEETLEJUICE: The Musical on Broadway

**Value: \$350**

**Opening Bid: \$150**

**Bidding Increment: \$50**

Receive two house seats to *BEETLEJUICE: The Musical* at the Winter Garden Theatre in New York City. *BEETLEJUICE* tells the story of Lydia Deetz, an unusual teenager obsessed with death. Lucky for Lydia, her new house is haunted by a

## EVENTS TO REMEMBER LOTS 300-393



Lot 316

recently deceased couple and Beetlejuice, a delightful demon with a real zest for life. *The New York Times* calls it "a jaw-dropping fun house."

*Donated by Ruth Hendel Productions, New York, NY*

### 317-356

#### Cocktail Party at the Madison Beach Club

**Opening Bid: \$125**

Take in beautiful sunset views of the Sound from the upper deck of the Madison Beach Club as you mingle with other guests, enjoy delicious hors d'oeuvres, and sip on refreshing cocktails. Thursday, July 16, 2020, 5:30-8pm. Smart casual dress. Limited to 40 guests.

*Donated by Marcia & David Kalayjian and Dyanne & John Rafal*



Lot 317-356



Lot 357

### 357

#### U.S. Open Tennis Tickets

**Value: \$300**

**Opening Bid: \$150**

**Bidding Increment: \$50**

Two loge box seats to the 2020 U.S. Tennis Championships held at the Arthur Ashe Stadium in Flushing, NY. The U.S. Open is a sports and entertainment spectacle featuring world-class athletes and electrifying action. Day session, Thursday, September 3, 2020.

*Donated by Bud & Katy Canaday*

### 358

#### Letterpress Workshop for Two

**Value: \$300**

**Opening Bid: \$150**

**Bidding Increment: \$50**

Letterpress is the process of printing with metal or wood type and images on fine cotton paper with hand or foot operated presses from the 1800s. You and a friend will attend a one-day workshop to learn the art of letterpress printing with letterpress printer and press restorer John Falstrom at his studio in Lyme. You will learn how to use all the equipment necessary to set up, adjust, ink, and actually produce your own prints. Session will be 4-5 hours long. Valid for one year.

*Donated by John Falstrom*

**359****Private Cooking Class with Chef Laura Grimmer at the Perfect Pear****Value: \$300****Opening Bid: \$150****Bidding Increment: \$50**

The winning bidder will receive a private cooking class for six with Chef Laura Grimmer at The Perfect Pear in Chester. Laura is a graduate of The French Culinary Institute in SoHo and believes cooking the French way is very straightforward. It starts with planning the meal, from the apéritif to dessert. It's about using the right tools—the things professional chefs rely on—with the proper techniques. And it's about the visual appeal of the dish and the setting. She brings these elements to her cooking classes, which focus on technique. Date to be mutually agreed upon. Expires September 21, 2020.

*Donated by The Perfect Pear, Chester, CT and Daniel S. Hansen & David D.J. Rau*

**360****Chicago on Broadway****Value: \$300****Opening Bid: \$150****Bidding Increment: \$50**

Receive two tickets to see the longest running American musical in Broadway history at the Ambassador Theatre. Valid for a Tuesday evening, Friday evening, Saturday matinee or Sunday matinee performance only through December 15, 2019. (Not valid October 12-13 or November 29-30, 2019.) Date requested must be at least three business days prior to performance you wish to attend.

*Donated by Chelsea Salyer*

**Lot 360****361****The Play That Goes Wrong at the Shubert Theatre and Dinner at Roia Restaurant****Value: \$300****Opening Bid: \$150****Bidding Increment: \$50**

What would happen if Sherlock Holmes and Monty Python had an illegitimate Broadway baby? You'd get *The Play That Goes Wrong*, Broadway & London's award-winning smash comedy! Receive two tickets to the Sunday, November 10, 6:30pm performance, as well as a \$100 gift card to Roia Restaurant.

*Donated by CAPA and the Shubert Theatre, New Haven, CT and Katie Tuttle*

**362-373****Lunch and Sol LeWitt Studio Tour****Opening Bid: \$125**

The perfect outing for art, food, and wine aficionados! With Carol LeWitt as your luncheon host visit the Chester home of Sol LeWitt, one of the most esteemed American artists of his time and a leading figure of the Conceptual art movement. You will receive a private tour of LeWitt's personal studio and private collection, providing a rare behind-the-scenes look at the inner workings of an artist whose work is in the permanent collections of major museums around the world. Each guest will also receive a copy of the new book, *Sol LeWitt: A Life of Ideas*, by Lary Bloom.

Saturday, August, 1, 2020, 12 noon. Limited to 12 people.

*Donated by Carol LeWitt and Wesleyan University Press, Middletown, CT*

**374****Family Fun Package #1****Value: \$288****Opening Bid: \$150****Bidding Increment: \$50**

Fun for the entire family! Includes: two memberships with two race passes and two 30-minute jump passes for Supercharged Indoor Karting and Trampolines in Montville; four general admission passes (expire September 21, 2020) and four planetarium passes (expire December 13, 2020) for Mystic Seaport Museum; and two adult and two child tickets for the King Richard's Faire Renaissance Festival in Carver, MA (valid through October 20, 2019).

*Donated by Supercharged Indoor Karting & Trampolines, Montville, CT; Mystic Seaport Museum, Mystic, CT; and King Richard's Faire, Carver, MA*

**MIHAE LEE, ARTISTIC DIRECTOR****Lot 375****375****Two Subscriptions to the Essex Winter Series****Value: \$280****Opening Bid: \$100****Bidding Increment: \$50**

Subscriptions for two people to the 2020

Essex Winter Series. Enjoy concerts by Ani Kavafian with alumni of the Fenton Brown Emerging Artist Program celebrating Mihae Lee's 10<sup>th</sup> year as Artistic Director (January 12), the International All-Star Jazz Band featuring Jeff Barnhart and Jim Fryer (February 16), the Linü Guitar Duo featuring rising stars Jiji and Gulli Bjornsson (March 8), and BeethovenFest celebrating Beethoven's 250<sup>th</sup> birthday (March 29). All four concerts are held on Sundays at 3:00pm at Valley Regional High School or John Winthrop Middle School, both located in Deep River. The magic of music is the perfect cure for winter woes!

*Donated by Essex Winter Series, Essex, CT*

**376****Family Fun Package #2****Value: \$270****Opening Bid: \$100****Bidding Increment: \$50**

Get the family together and head out for some fun and cultural experiences! Includes: five tickets to the Ghosts of New Haven tour (expires May 19, 2020); a pass for four people to enjoy a 2.5 hour train and riverboat excursion on the Essex Steam Train & Riverboat (Monday-Friday in coach seating); and 200 points for Nomads Adventure Quest in South Windsor to be used towards adventures, arcade games, and redemption/prize games (excludes food & beverages).

*Donated by Ghosts of New Haven, New Haven, CT; Essex Steam Train & Riverboat, Essex, CT; and Nomads Adventure Quest, South Windsor, CT*

**377****Felix Cavaliere's Rascals at The Kate & Dinner at Red Hen Restaurant****Value: \$256****Opening Bid: \$100****Bidding Increment: \$50**

Receive two orchestra tickets to see



## EVENTS TO REMEMBER ★ LOTS 300-393

legendary singer songwriter, Felix Cavaliere performing at The Kate on Sunday, October 27, 2019, 3pm. Felix's 50-year career includes inductions into the Rock & Roll Hall of Fame, Songwriter Hall of Fame, Vocal Group Hall of Fame, and Grammy Hall of Fame. After the show walk on over to Red Hen Restaurant and enjoy dinner with a \$100 gift card.

*Donated by The Kate, Old Saybrook, CT and Lisa Rhodes*

### 378

#### Dance Lessons

**Value: \$250**

**Opening Bid: \$100**

**Bidding Increment: \$50**

Put on your dancing shoes and get ready to rumba! Gift certificate for two private lessons, two group lessons, and one studio party at Arthur Murray Dance Center in Niantic. Valid through December 30, 2019.

*Donated by Arthur Murray Dance Center, Niantic, CT*



Lot 378

### 379

#### Exclusive Shopping Experience at The E List Shop

**Value: \$250**

**Opening Bid: \$100**

**Bidding Increment: \$50**

Erica Tannen will provide the winning bidder with a personal shopping experience at her meticulously curated new boutique, The E List Shop in Chester, CT. You can select up to \$250 worth of merchandise from the shop's ageless, modern and fashion forward collections by an amazing selection of designers. Expires December 31, 2020.

*Donated by The E List Shop, LLC, Chester, CT*



Lot 379

### 380

#### Four Tickets to a 2020 Yankees Home Game

**Value: \$250**

**Opening Bid: \$100**

**Bidding Increment: \$50**

Receive four tickets to a weekend 2020 New York Yankees home game. The seats will be located on the terrace level overlooking first base, section 312, row 2, seats 15, 16, 17, and 18. Date to be mutually agreed upon. Valid April–September 2020.

*Donated by Gowrie Group, Westbrook, CT*



Lot 380

### 381

#### Private Ghost Tour at the Mark Twain House & Museum for Ten People

**Value: \$250**

**Opening Bid: \$100**

**Bidding Increment: \$50**

The Mark Twain House & Museum in Hartford has been featured on SYFY Channel's *Ghost Hunters* and Biography Channel's *My Ghost Story*. You and nine friends will receive your own private ghost

## EVENTS TO REMEMBER ★ LOTS 300-393

tour, where you will learn about these investigations and Mark Twain's own interest in the supernatural. Blackout dates and restrictions apply. Expires September 21, 2020.

*Donated by The Mark Twain House & Museum, Hartford, CT*

### 382

#### Old Lyme Inn and The Side Door

**Value: \$250**

**Opening Bid: \$100**

**Bidding Increment: \$50**

The high bidder will enjoy a \$250 gift certificate which can be used at this historic local inn towards dining, overnight accommodations, or tickets to the Side Door jazz club. Does not include taxes or gratuity. Some blackout dates may apply for Side Door shows. Expires December 31, 2019.

*Donated by Old Lyme Inn and The Side Door, Old Lyme, CT*

### 383

#### New Haven Symphony Orchestra and Goodfellas Restaurant

**Value: \$248**

**Opening Bid: \$100**

**Bidding Increment: \$50**

The family can take in a performance of your choice with two adult and two child tickets to any 2019-2020 New Haven Symphony Orchestra Classics or Pops Series in New Haven. Seating based on availability at time of redemption. Not redeemable for cash and may not be credited toward a subscription purchase. Enjoy dinner before the show with a \$150 gift card to Goodfellas Restaurant in New Haven.

*Donated by New Haven Symphony Orchestra, New Haven, CT and John & Dyanne Rafal*



Lot 384

### 384

#### Bowling at High Rollers Foxwoods

**Value: \$240**

**Opening Bid: \$100**

**Bidding Increment: \$50**

Enjoy two hours of bowling with shoe rentals for up to eight people at High Rollers Luxury Lanes & Lounge in the Foxwoods Resort Casino. Must make advance reservations and excludes Saturdays. Expires December 2020.

*Donated by Big Night Entertainment Group, Mashantucket, CT*

### 385

#### Dinner for Two at Field House Farm

**Value: \$240**

**Opening Bid: \$100**

**Bidding Increment: \$50**

Enjoy a "field to table" dinner for two at Field House Farm in Madison, CT. When you arrive, you will receive a tour of the farm with a glass of wine. You will then meet the chef and wine experts before sitting down to an expertly-prepared meal from the local harvest with wine pairings. Call for available dates. Expires October 1, 2020.

*Donated by Field House Farm, Madison, CT*



Lot 385

**386****Billy Elliot the Musical at Goodspeed & Dinner at Rustica Ristorante****Value: \$240****Opening Bid: \$100****Bidding Increment: \$50**

Two tickets to a Wednesday or Thursday evening performance of *Billy Elliot the Musical* at the famed Goodspeed Opera House through November 24, 2019. Young Billy Elliot is pulled between his family's coal-mining roots and his newly discovered passion to dance. Is his future boxing gloves or ballet shoes? In this Broadway phenomenon with songs by the legendary Elton John, following your dream has never been more electric! Before the show, enjoy an elegant dinner with a \$100 gift certificate to Rustica Ristorante in Chester.

*Donated by Goodspeed Musicals, East Haddam, CT and Daniel S. Hansen & David D.J. Rau*

**387****Local Sports Package****Value: \$264****Opening Bid: \$100****Bidding Increment: \$50**

Perfect for any sports enthusiast. Enjoy this sports package made up of four packs of tickets to cheer on three of our local teams. Package includes: four tickets to a Hartford Athletic 2020 season soccer match in Hartford; a family four pack of tickets for any regular 2019/2020 season Hartford Wolf Pack ice hockey game in Hartford; four right field porch tickets for any Monday–Thursday Hartford Yard Goats home baseball game in April or May 2020; four reserved seats for any 2020 regular season Connecticut Tigers home baseball game in Norwich.

*Donated by Hartford Athletic, Hartford, CT; Hartford Wolf Pack, Hartford, CT; Hartford Yard Goats, Hartford, CT; and Connecticut Tigers, Norwich, CT*

**388****Paint with a Stingray at the Mystic Aquarium & Lunch****Value: \$216****Opening Bid: \$100****Bidding Increment: \$50**

You and a guest are invited to step into the Ray Touch Tent and help the Mystic Aquarium staff during a private feeding and enrichment session. This interactive experience allows you to work side-by-side with their Aquarists to provide enrichment for the stingrays. You'll achieve a better understanding of stingrays and their natural behaviors, all while providing them with various stimuli. Must be at least 6 years old to participate in the painting portion of encounter; ages 6-12 must be accompanied by a participating adult. Includes admission to the Aquarium. Then take in lunch with a \$50 gift card to either Go Fish or the Steak Loft, both located within the Olde Mystic Village.

*Donated by Mystic Aquarium, Mystic, CT and Gregory Strupes*

**389****Water Bike Tour & Lunch at Johnny Ad's****Value: \$210****Opening Bid: \$100****Bidding Increment: \$50**

Enjoy a relaxing and scenic water bike ride "on the water" with a guided tour of Old Saybrook's Oyster River for up to four people. (Expires September 21, 2020.) Then finish your day at Johnny Ad's with fresh seafood, burgers, or dogs with a \$50 gift card.

*Donated by Water Bike Tours of Old Saybrook and Lisa Rhodes*

**390****Day at the PGA Travelers Championship****Value: \$208****Opening Bid: \$100****Bidding Increment: \$50**

You and three guests can experience world-class golf action up close and in person, when the PGA TOUR comes to Connecticut. The world's best golfers will compete at TPC River Highlands in Cromwell, CT June 22-28, 2020. Valid for any one day.

*Donated by Travelers Championship, Hartford, CT*

**391****Golf on the Gary Player Course at Lyman Orchards****Value: \$192****Opening Bid: \$75****Bidding Increment: \$25**

Enjoy an 18-hole foursome of golf with carts. The Player Course is sprinkled with deciduous trees and classic white pines. This course takes players through the apple orchards and offers ample elevation changes throughout the design. It rewards well-positioned drives and accurate iron play with 34 bunkers protecting relatively small greens. Redeemable Monday–Thursday anytime, Friday–Sunday after 2pm. Expires December 31, 2019.

*Donated by Lyman Orchards Golf Club, Middlefield, CT*

**392****Kayak Rental and Brunch at Water's Edge****Value: \$166****Opening Bid: \$75****Bidding Increment: \$25**

You and a guest can enjoy wonderful food and stunning views of Long Island Sound with Sunday brunch at Water's Edge Resort & Spa in Westbrook, one of the best Sunday

Brunches in Connecticut. (Includes tax and gratuity, expires May 3, 2020.) Then head over to Paddleworks at the Harborside Marina in Clinton where you can relax with a two hour tandem kayak rental on the open waters of the Long Island Sound.

*Donated by Paddleworks SUP & Kayak Shop with Harborside Marina, Clinton, CT and Water's Edge Resort & Spa, Westbrook, CT*

**393****Tickets to Girls at the Yale Repertory Theatre****Value: \$120****Opening Bid: \$50****Bidding Increment: \$25**

Enjoy two tickets to the latest play by renowned playwright Brandon Jacobs-Jenkins, *Girls* directed by Lileana Blain-Cruz. Exiled to boarding schools his entire life, Deon returns to his birthplace with a vengeance—luring the women of the town to the woods for a night of uninhibited partying. *Girls* is an electrifying contemporary spin on Euripides's *The Bacchae* with bumping dance music and live-streaming video. Valid for a Tuesday, Wednesday or Thursday evening performance from October 4-26, 2019. Not valid opening night.

*Donated by Yale Repertory Theatre, New Haven, CT*



Lot 393

### 400

#### 7-Night Ski Escape to Park City, Utah

**Value: \$2,500**

**Opening Bid: \$1,000**

**Bidding Increment: \$200**

Up to four people can enjoy this immaculate 2 bedroom (queen bed in each), 2 bath condo for 7 nights/8 days. The second floor east-facing condo at the Lodges at Bear Hollow enjoys beautiful sunrises and overlooks the Swaner Nature Preserve and Uinta Mountains. Located adjacent to the Olympic Ski Park, the condo is less than one mile to Redstone Village with many shops and restaurants, three miles to the Canyons Ski area and six miles to Park City Mountain Base Resort. Located on the free public bus route, a car is also recommended. Other amenities include: shared fitness club and hot tub, natural gas fireplace, WIFI, and designated parking space in an indoor garage. No pets or smoking and non-transferable. Available: During the Sundance Film Festival or anytime between January 13,



Lot 400

2020–April 12, 2020 (excluding March 2-19, 2020). 90 days advance notice is required to guarantee availability within these dates. If less than 90 days advance notice, certain dates may not be available. Date must be mutually agreed upon with owner. Airfare, car rental, lift passes not included.

*Donated by Allan & Andrea Inglis*

### 401

#### Special Night Out at Mohegan Sun

**Value: Unique!**

**Opening Bid: \$400**

**Bidding Increment: \$100**

Enjoy a one-night stay at Mohegan Sun Hotel, dinner for two (up to \$250) at Todd English's Tuscany, and two tickets to a show of your choice at the Mohegan Sun Arena (subject to availability). Valid for one year.

*Donated by The Mohegan Tribe, Uncasville, CT*



Lot 401



Lot 402

### 402

#### James Pharmacy Bed & Breakfast Getaway

**Value: \$650**

**Opening Bid: \$250**

**Bidding Increment: \$50**

Enjoy a two night stay at The James Pharmacy Bed & Breakfast in Old Saybrook, which was a general store in 1790, the town's first pharmacy in 1877, and later a soda fountain where townspeople would gather. Now this historic building has been lovingly repurposed into an elegant bed & breakfast designated as a Select Registry property. Select Registry is a diverse collection of independent, boutique inns that deliver a level of personalized service and quality only a select few can attain. Three guest rooms feature four-poster beds with luxurious Italian linens, modern oversized showers, and gas fireplaces. As a nod to the soda counter, today's patrons are tempted by Italian gelato, made daily on the premises. Taxes due and must stay before December 31, 2019.

*Donated by The James Pharmacy Bed & Breakfast, Old Saybrook, CT*

### 403

#### Overnight Stay at the University Club of New York

**Value: Unique!**

**Opening Bid: \$450**

**Bidding Increment: \$50**

Enjoy an overnight stay for two with dinner and breakfast at New York City's most prestigious private social club. The University Club, designed by Charles McKim of the iconic architectural firm of McKim, Mead & White, is on the National Historic Register and hosts one of New York's great private art collections, with a particularly strong group of works by American painters including Childe Hassam. Conveniently located for shopping, theater, and the Museum of Modern Art. Date to be mutually agreed upon. Expires September 21, 2020. Winning bidder will also receive MOMA passes and a bottle of exclusively labeled wine to take home the evening of the Auction.

*Donated by Barbara Smith*

### 404

#### Deluxe Overnight Stay at Delamar West Hartford

**Value: \$554**

**Opening Bid: \$200**

**Bidding Increment: \$50**

Delamar West Hartford offers a contemporary take on traditional elegance and is situated in the heart of the Blue Back Square neighborhood. Enjoy a one-night stay for two in one of their 375 sq. ft. deluxe king rooms with luxurious linens and large operable windows. Amenities include a





Lot 404

minibar, coffee machine by Nespresso, small dining table/work space, and a large marble bathroom with luxurious robes. Your package also includes one 60-minute Vitality of Glaciers Facial at the Delamar Spa. Subject to hotel availability. Valid through May 2, 2020.

*Donated by Delamar West Hartford, West Hartford, CT*

## 405

### Romantic Getaway to Mystic with Dinner at Mohegan Sun

**Value: \$454**

**Opening Bid: \$200**

**Bidding Increment: \$50**

Enjoy a romantic getaway to historic Mystic with a one-night stay for two at The Whaler's Inn, downtown Mystic's largest boutique hotel, nestled just steps from the banks of the Mystic River and the Bascule Drawbridge. A two night minimum may be required on weekends, expires September 21, 2020. While there enjoy a breathtaking morning or noon sail aboard the schooner Argia. Valid during May and June or after Labor Day in September and October. Then head over to Tuscany in Mohegan Sun for an Italian dining experience for two, valued up to \$100, gratuity not included. Expires September 21, 2020.

*Donated by The Whaler's Inn, Mystic, CT; Argia Mystic Cruises, Mystic, CT; and Mohegan Sun, Uncasville, CT*

## 406

### Mystic Marriott Hotel & Red Door Spa

**Value: \$424**

**Opening Bid: \$200**

**Bidding Increment: \$50**

Receive an overnight stay at the Mystic Marriott Hotel in Groton. While there you and a guest can enjoy two day passes to the Red Door Salon & Spa located where you will have access to the indoor heated pool, jacuzzi, fitness center, relaxation room, and steam room. Plus receive two spa lunches. Valid Sunday through Thursday, based on availability. Expires September 30, 2020.

*Donated by Mystic Marriott Hotel & Spa, Groton, CT and The Red Door Salon & Spa, Groton, CT*

## 407

### Spooky Salem Getaway

**Value: \$378**

**Opening Bid: \$150**

**Bidding Increment: \$50**

Enjoy an overnight stay at the historic Hawthorne Hotel in Salem, MA in the best available room with breakfast. (Not valid in October, excludes tax, alcohol, and gratuity. Expires December 30, 2020.) While there, head over to the Salem Witch Museum and examine one of the most enduring and emotional events in American history—the Witch Trials of 1692—with a family six-pack of admission tickets. Experience the drama of that dark time through thirteen life-size stage sets, figures, lighting and a stirring narration of the Salem Witch Hunt. Not valid in October. Expires April 2, 2026.

*Donated by Hawthorne Hotel, Salem, MA and Salem Witch Museum, Salem, MA*



Lot 408

## 408

### Hotel Manisses on Block Island

**Value: \$350**

**Opening Bid: \$150**

**Bidding Increment: \$50**

Enjoy a gift card to the Hotel Manisses located just steps from the ferry landing and a three minute walk from Ballard's Beach on Block Island. The hotel has seventeen guestrooms offering various combinations of claw-foot tubs, decks, and ocean views. The hotel also offers an acclaimed restaurant serving brunch and dinner showcasing local seafood.

*Donated by Susan & Robert Staab*

## 409

### Overnight Stay at Margin Street Inn in Westerly

**Value: \$350**

**Opening Bid: \$150**

**Bidding Increment: \$50**

The Margin Street Inn is the casually elegant escape that you won't want to leave! Located in downtown Westerly on the banks of the Pawcatuck River, you and a guest will enjoy an overnight stay



Lot 409

in a Queen Room, off season. Breakfast and early evening refreshments included. Excludes holiday weekends.

*Donated by Margin Street Inn, Westerly, RI*

## 410

### Inn at Stonington and Dog Watch Café

**Value: \$340**

**Opening Bid: \$150**

**Bidding Increment: \$50**

Enjoy a one-night stay at The Inn at Stonington located in Stonington Borough, Connecticut. Set along the waterfront, the Inn is a short stroll from a host of award-winning restaurants, shops and galleries, making it an ideal setting for a romantic getaway. Valid Sunday-Thursday from November 15, 2019–May 15, 2020 excluding holidays, holiday weekends, and the deluxe seaside suite. Then take in a spectacular harbor sunset while dining at the Dog Watch Café overlooking Dodson Boatyard with a \$50 gift card.

*Donated by The Inn at Stonington, Stonington, CT and Dog Watch Café, Stonington, CT*

## 411

### Overnight Stay in Lake George

**Value: \$299**

**Opening Bid: \$150**

**Bidding Increment: \$50**

Enjoy an overnight stay in either the Howe, Jogues, or Shepard room at The Inn at Erlowest, located in the picturesque Lake George, NY. Erlowest is a Queen-Anne Stone Castle originally built by Mr. Edward Morse Shepard as part of Millionaires Row in 1898 and has been graciously restored to its grandeur of the era as a luxurious inn and farm-to-table restaurant. Also includes a 3-course gourmet dinner and farm-fresh breakfast. Valid from November through



Lot 411

April 30, 2020, excluding weekends and holidays. Tax, gratuity and alcohol not included.

*Donated by The Inn at Erlowest, Lake George, NY*

## 412

### Maine Mansion Retreat

**Value: \$250**

**Opening Bid: \$100**

**Bidding Increment: \$50**

Get away to Kennebunkport, Maine for some much-needed R & R! Gift certificate for a one-night stay, Sunday through Thursday, in a classic room at the historic Captain Lord Mansion, an intimate Maine coast inn and the subject of the Museum's painting by Willard Metcalf. Excludes weekends, all major holidays, and special events. Expires May 15, 2020.

*Donated by Captain Lord Mansion B&B, Kennebunkport, ME*



Lot 412



Lot 500

## 500

### Multi-Gemstone Bangle Bracelet

**Value: \$3,500**

**Opening Bid: \$1,400**

**Bidding Increment: \$200**

You will definitely make a statement with this stunning 14K yellow gold, hinged bangle consisting of an assortment of gemstones (garnets, zircons, spinels, sapphires, beryls, and green chalcidony) in various sizes and colors.

*Donated by The Rockwell Family*

## 501

### Sapphire & Diamond Ring

**Value: \$1,500**

**Opening Bid: \$600**

**Bidding Increment: \$100**

Add this beautiful 18K yellow gold ladies circa 1980's vintage blue sapphire and diamond band style ring to your collection. Size 8.

*Donated by Andrew & Diane Kaslow*



Lot 501



Lot 502

## 502

### Cat's Eye Aquamarine Ring

**Value: \$1,000**

**Opening Bid: \$400**

**Bidding Increment: \$100**

Breathtaking ladies 14K yellow gold and aquamarine ring with intricately textured leaves on both sides of a 15.8 carat oval aquamarine cabochon. Size 8.

*Donated by The Rockwell Family*

## 503

### Flowering Tree from Wilber & King Nurseries

**Value: \$750**

**Opening Bid: \$300**

**Bidding Increment: \$50**

The winning bidder will have their choice of a flowering tree valued at \$500 from Wilber & King Nurseries in Branford. Also includes an initial consultation on placement, delivery, and planting. Recommended planting season: spring/fall 2020. Date to be mutually agreed upon.

*Donated by Wilber & King Nurseries, Branford, CT*



Lot 503

## 504

### Majestic Native Tree Including Delivery and Planting

Value: \$750

Opening Bid: \$300

Bidding Increment: \$50

Winning bidder will take home a majestic tree native to southeastern Connecticut. Exact species of tree will be on display in the silent auction and listed on the bid board. Includes delivery and planting services within a 25-mile radius of the Museum by Mountain View Landscapes & Lawncare, the landscapers behind the Museum's *Robert F. Schumann Artist's Trail*. Date to be agreed upon by October 12, 2019.

Donated by Drew J. Kenny, Outdoor Lifestyles, East Lyme, CT and Mountain View Landscapes & Lawncare, Chicopee, MA

## 505

### Literary Libations Package

Value: \$720

Opening Bid: \$300

Bidding Increment: \$50

Take home this package which contains eleven Writers House publications and five bottles of the world's finest whiskey. Publications include hardcover copies of: *Eyes Wide Open* by Andrew Gross; *The*



Lot 505

*Crooked Maid* by Dan Vyleta; *Someone Knows* by Lisa Scottoline; *Murphy's Law* by Jack Murphy; *Rival's Break* by Carla Neggers plus six more titles. Whiskeys include: Nikka 17 year old Pure Malt Whisky; Cyrus Noble Small Batch Bourbon Whiskey; Chivas Regal Aged 12 years Blended Scotch Whiskey; Laphroig Islay Single Malt Scotch Whiskey; and Nikka Coffee Grain Whiskey. A perfect past time for those long cold winter nights!

Donated by Anonymous

## 506

### Mushroom Shaped Stools

Value: \$700

Opening Bid: \$300

Bidding Increment: \$50

This set of three mushroom-shaped stools designed to depict Alice's trip to Wonderland will add some fantastical flair to your woodland garden. Made of welded sheet metal, each stool stands 19 inches tall,



Lot 506

making it ideal garden or children's seating. These stools were on display during the Museum's 2018 *Wee Faerie Village: Lettersburg Junction*.

Donated by The Shop at the Florence Griswold Museum, Old Lyme, CT

## 507

### Flowers For the Year!

Value: \$500

Opening Bid: \$200

Bidding Increment: \$50

Enjoy a 12-month flower subscription from Mar Floral and Botanicals in Old Saybrook, CT. Each month you will receive \$40 worth of cut flowers, to be picked up from the shop as requested by you. Also take home this beautiful arrangement on display, which was created by floral designer and owner Marlee Santoro.

Donated by Mar Floral & Botanicals, Old Saybrook, CT



Lot 507

## 508

### 2012 Napa Valley Reserve Cabernet Sauvignon

Value: \$450

Opening Bid: \$200

Bidding Increment: \$50

Enjoy three bottles of 2012 Napa Valley Reserve Cabernet Sauvignon, made for members only of The Napa Valley Reserve, a private club for wine aficionados established by legendary Napa winemaker Bill Harlan of Harlan Estates. Grape cultivation and winemaking operations all take place under the supervision of the Harlan Estates team.

Donated by Sally & Larry Lawrence



Lot 508

## 509

### Nantucket Hurricane and Gift Certificate from EF Watermelon

Value: \$395

Opening Bid: \$150

Bidding Increment: \$50

Weighty yet still somehow ethereal, this hurricane lamp, part of Simon Pearce's iconic Nantucket line, stands over thirteen inches high and is almost eight inches wide, perfect when glowing with a tall pillar candle for a dining table's centerpiece. Or imagine it as a dramatic art object vessel. Also, take home a gift certificate to EF Watermelon—Old Lyme's emporium of fine jewelry, objets d'art, and Simon Pearce original designs in glass and pottery.

Donated by EF Watermelon, Old Lyme, CT



Lot 509

## 510

### Patricia Spratt for the Home and Simon Pearce

Value: \$353

Opening Bid: \$150

Bidding Increment: \$50

Adorn your dining room table with this set of eight 100% cotton placemats





Lot 510

and napkins decorated with a tree and mountain scene in shades of blues and grays. Placemats are 13 1/2 x 17 inches each. Plus show off seasonal blooms with a medium Bloomfield vase by Simon Pearce. This clear glass vase features signature clarity and handcrafted curvature for a new take on a classic silhouette. Measures 9 1/8 x 7 3/4 x 7 3/4 inches.

*Donated by Patricia Spratt for the Home, Old Lyme, CT and Simon Pearce*

### 511 Indulge Yourself at Essence

**Value: \$310**  
**Opening Bid: \$150**  
**Bidding Increment: \$50**

Pamper yourself with a collagen facial with Sylvie, a mani/pedi with Jakie, and then relax with a 60-minute massage with Cora. Expires November 30, 2019.

*Donated by Essence Center for Beauty & Wellness, Old Saybrook, CT*



Lot 511

### 512

#### European Facials at Faces

**Value: \$300**  
**Opening Bid: \$150**  
**Bidding Increment: \$50**

Receive two exclusive European facials from Patricia Davidson at Faces Aesthetics-Skincare in Old Lyme. Educated in European care of skin, Patricia is set apart from her competition because of her extensive and specialized training. She performs the rituals of her massage therapy as an art form, providing a beautiful and relaxing experience with the benefit of intensive dermal cleansing and nourishment. Valid through Sept. 2020.

*Donated by Faces Aesthetics-Skincare, Old Lyme, CT*

### 513

#### Three Bottles of 2009 Suduiraut, Sauternes

**Value: \$300**  
**Opening Bid: \$150**  
**Bidding Increment: \$50**

Robert Parker's *Wine Advocate* says of this wine: "The 2009 is one of the greatest wines ever produced from the estate. It has riveting bouquet of quince, honey, pear and a touch of clarified butter that is beautifully defined, offering scents of yellow flowers



Lot 513

with continued aeration. It possesses an unerring sense of completeness and composure that is irresistible."

*Donated by Sally & Larry Lawrence*

### 514

#### Wine and Cheese for Your Next Gathering

**Value: \$300**  
**Opening Bid: \$150**  
**Bidding Increment: \$50**

Ideal for your next dinner party, take home this basket of three bottles of wine from Seaside Wine & Spirits in Old Saybrook. One bottle each of: Niner Wine Estates Twisted Spur 2007 Red Wine signed by vineyard founders Pam and Dick Niner, Niner Wine Estates Twisted Spur 2008 Red Wine signed by the wine maker, and Niner Wine Estates 2007 Petite Sirah signed by the wine maker. Plus enjoy this coral colored serving tray, cheese knife and \$75 gift certificate to be used for a selection of fine cheeses and meats from Fromage Fine Foods in Old Saybrook.

*Donated by Seaside Wine & Spirits, Old Saybrook, CT and Fromage Fine Foods, Old Saybrook, CT*

### 515

#### Handbag by Jacqueline Kangley

**Value: \$300**  
**Opening Bid: \$150**  
**Bidding Increment: \$50**  
Bring home this unique custom "Alexa" bag made by Jacqueline Kangley with leather, Hawaiian kukai nuts, and coral. A Hadlyme resident, Kangley designs bags that combine classic East Coast style with some Hawaiian aloha mixed into her creations.

*Donated by Jacqueline Kangley*

### 516

#### Three Month Coffee Subscription to Ashlawn Farms and the Espro Press

**Value: \$265**  
**Opening Bid: \$100**  
**Bidding Increment: \$50**

Receive two 12 ounce bags of coffee delivered to your home each month for three months with the Globetrotter Coffee of the Month Club. Explore specialty coffees from Africa, Asia, and the Americas, as well as some of their signature blends. You will also receive an ESPRO Press P7 made of insulated, double-walled stainless steel with a double micro-filter.

*Donated by Ashlawn Farm Coffee, Old Saybrook, CT and Kate Bartlett*

### 517

#### Delicate Pink Freshwater Pearl Necklace

**Value: \$265**  
**Opening Bid: \$100**  
**Bidding Increment: \$50**

Freshwater oval pearl strand with magnetic clasp and removable sterling silver pearl enhancer with freshwater button pearl, 18 inches.

*Donated by Deep River Jewelry Design, Deep River, CT*



Lot 517



Lot 518



Lot 519

## 518

**Eva Kay Designed Necklace**

**Value: \$258**

**Opening Bid: \$100**

**Bidding Increment: \$50**

Make a statement with this unique 100% handcrafted necklace made of coconut wood, precious stones and 18K gold plated metal designed by Eva Kay. Measures 31 inches.

*Donated by idiom, New Haven, CT*

## 519

**Simon Pearce Woodbury Vase Adorned with Sea Artifacts**

**Value: \$250**

**Opening Bid: \$100**

**Bidding Increment: \$50**

Take home this lovely Simon Pearce Woodbury vase, 13 1/2 inches tall, adorned with twinkling lights, air plants, sea glass, drift wood and copper sheathing used by the Royal Navy during the 18th century to protect the hull of the boats. Set atop a piece of drift wood, 10 1/2 x 7 inches. Designed by Lyme native and auction committee volunteer Marie Martin.

Also includes a copy of Anne Morrow Lindbergh's book *Gifts from the Sea*. A tribute to tonight's party theme.

*Donated by Marie Martin*

## 520

**Rob Rivers Retreat Package**

**Value: \$238**

**Opening Bid: \$100**

**Bidding Increment: \$50**

Be refreshed with "The Rivers Retreat"—the most requested spa package at Rob Rivers, The Salon and Spa in Old Lyme. You will be treated to their essential facial, a spa manicure and pedicure, an aromatherapy scalp massage, and shampoo/blow-dry. A perfect way to relax and feel beautiful. Allow 4.25 hours. Must book in advance.

*Donated by Rob Rivers, The Salon and Spa, Old Lyme, CT*



Lot 520



Lot 521

## 521

**Necklace by Charlotte Meyer**

**Value: \$225**

**Opening Bid: \$100**

**Bidding Increment: \$50**

Dress up with this double-stranded necklace of polished stones, green pearls, and Swarovski crystals, 18 inches long.

*Donated by Charlotte Meyer*

## 522

**Three Bottles of 2006 Poggio Antico Brunello di Montalcino**

**Value: \$225**

**Opening Bid: \$100**

**Bidding Increment: \$50**

*Wine Enthusiast* says of this wine: "Poggio Antico consistently delivers standout



Lot 522

Brunello, and this expression from the 2006 vintage is no exception. The wine is plush and rich with deliciously soft succulence. In the background, it delivers loads of vanilla, sweet spice, clove, and black cherry."

*Donated by Sally & Larry Lawrence*

## 523

**For the Beer Enthusiast**

**Value: \$225**

**Opening Bid: \$100**

**Bidding Increment: \$50**

Receive ten "Port of Call" glasses personalized with latitude and longitude of a location selected by the winning bidder. These iconic 16 ounce glasses are reminiscent of the classic red solo beer cups. Plus, you will get two \$25 gift cards to Big Y World Class Market, which can be used to sample some of their fine local craft beers, as well as five "Tour for Two" passes to Thimble Island Brewing Company in Branford where you can tour their facility and see how their beer is made. A perfect gift for any beer enthusiast!

*Donated by North by Northeast Enterprises, LLC, Old Lyme, CT; Big Y World Class Market, Old Lyme, CT; and Thimble Island Brewing Company, Branford, CT*

## 524

**14K Gold Earrings**

**Value: \$200**

**Opening Bid: \$100**

**Bidding Increment: \$25**

These are definitely statement earrings! The intricate web of 14K gold is gently curved and fastened with European lever backs for added security.

*Donated by Paul C. Lirot Jewelers, Madison, CT*



Lot 524



Lot 526

## 525

### Vitality Spa and Rack Room Shoes

Value: \$200

Opening Bid: \$100

Bidding Increment: \$25

Prepare for endless summer beach time with a SpaRitual pedicure package at Vitality Spa & Wellness in Old Lyme. Enjoy the peace and quiet of a private room and experience their innovative waterless ritual on a heated table. Includes a leg and foot massage, nail polish, and a half leg wax. Expires September 21, 2020. Then head on over to Rack Room Shoes in Westbrook and purchase a new pair of sandals to show off your new pedicure with a \$50 gift card.

Donated by Vitality Spa & Wellness, Old Lyme, CT and Gregory Strupes

## 526

### Three Bottles of 2009 Domaine Ferrand Châteauneuf-du-Pape

Value: \$200

Opening Bid: \$100

Bidding Increment: \$25

Robert Parker's *Wine Advocate* says of this wine: "A candidate for wine of the vintage, the 2009 Châteauneuf-du-Pape (a tank aged blend of 90% Grenache and the rest Mourvedre, Syrah and Cinsault from 80+ year old vines) is a naked expression of Châteauneuf-du-Pape that is pure fruit and

complexity. It is incredibly complex in both the aromatics and on the palate, full-bodied and super-rich with sweet tannin and low acidity."

Donated by Sally & Larry Lawrence

## 527

### Salon Pure

Value: \$193

Opening Bid: \$75

Bidding Increment: \$25

It's time to pamper yourself with a \$115 gift card for any service offered at Salon Pure in Old Lyme (tip not included), plus take home a Moroccanoil smooth shampoo and conditioner duo.

Donated by Salon Pure, Old Lyme, CT



Lot 527

## 528

### LEGO Friends and Disney Princess Sets

Value: \$189

Opening Bid: \$75

Bidding Increment: \$25

A set of five different LEGO sets from the *Friends* and *Disney Princess* collections. Includes: *Friends Friendship House* (41340) for ages 6-12; *Disney Princess Ariel's Royal Celebration Boat* (41153) for ages 6-12; *Friends Mia's Farm Suitcase* (10746, Retired) for ages 4-7; *Disney Princess Mulan's Training Day* (41151) for ages 5-12; and *Disney Brick Headz Beast* (41596, Retired) for ages 10+.

Donated by LEGO Systems, Inc., Enfield, CT

## 529

### Pair of *Callicarpa*

Value: \$180

Opening Bid: \$75

Bidding Increment: \$25

A perfect addition to your garden or landscape. This deciduous shrub has clusters of white to pinkish flowers in the summer and pink to red-purple fruit that last well into the winter or dry season and are an important survival food for birds and other animals. Includes planting services within a 25-mile radius of the Museum. Date to be agreed upon.

Donated by Broken Arrow Nursery, Hamden, CT  
Planting donated by Linda Turner



Lot 529



Lot 530

## 530

### Rose Quartz Butterfly

Value: \$150

Opening Bid: \$75

Bidding Increment: \$25

Add this beautiful hand-chiseled butterfly to your garden, carved from rose quartz by stone mason Brant Amacher. Then attract some real ones with this butterfly-loving perennial.

Donated by Brant Amacher, Moodus, CT and Gregory Strupes

## 531

### Beautiful Hydrangea from Van Wilgen's Garden Center

Value: \$150

Opening Bid: \$75

Bidding Increment: \$25

If you're looking for a garden flower with show appeal, hydrangeas are truly stunning. Large globes of flowers cover this shrub in summer and spring. You will receive a popular variety from Van Wilgen's Garden Center (actual variety will be noted on bid board the evening of auction). Includes planting services within a 25-mile radius of the Museum. Date to be agreed upon.

Donated by Van Wilgen's Garden Center, North Branford, CT and Linda Turner



**532**

**New England River Rock Vase**

**Value: \$150**

**Opening Bid: \$75**

**Bidding Increment: \$25**

Take home this stunning handmade New England river rock vase adorned with a coral seas theme floral design by Chatal Lawrence of Total Design Source in Old Saybrook.

*Donated by Total Design Source, LLC, Old Saybrook, CT*

**533**

**LEGO Creator, Ninjago and City Sets**

**Value: \$140**

**Opening Bid: \$50**

**Bidding Increment: \$25**

A set of five different LEGO sets from the *Creator*, *Ninjago*, *Technic* and *City* collections. Includes: *Creator* Airshow Aces (31060, Retired) for ages 7-12; *Ninjago* Katana V11 (70638) for ages 7-14; *Technic* Dozer Compactor (42071) for ages 8-14; *City* Fire Patrol Suitcase (10740) for ages 4-7; and *City* High-speed Chase (60138) for ages 5-12.

*Donated by LEGO Systems, Inc., Enfield, CT*

**534**

**Dog Getaway & Care Package**

**Value: \$117**

**Opening Bid: \$50**

**Bidding Increment: \$25**

Leaving town and need to find a place for your dog to stay—or does your dog need to getaway from you? Well here's the solution. Enjoy a two night stay at Silver Trails—The Animal Inn in Westbrook, CT boasting 110 separate & spacious indoor/outdoor living areas on 60 acres. All rooms have cots for your pets to sleep on, and classical music is played throughout the kennel 24 hours a day. Plus take home this basket filled with an assortment of grain-free dog treats and

food, toys, and a bottle of organic aloe vera conditioner.

*Donated by Silver Trails - The Animal Inn, Westbrook, CT and Kate Bartlett*

**535**

**Tibetan Coral Pendant and Ring**

**Value: \$100**

**Opening Bid: \$50**

**Bidding Increment: \$25**

Take home this beautiful hand-forged pendant and wirework ring with antique Tibetan coral beads. The pendant is .99 fine silver, and the ring is copper plated with sterling silver.

*Donated by Michaelle Pearson - Absinthine Jewelry*



**Lot 535**

**536**

**Orchid Garden from Ballek's**

**Value: \$100**

**Opening Bid: \$50**

**Bidding Increment: \$25**

Take home this lovely orchid garden in a decorative pot.

*Donated by Ballek's Garden Center, East Haddam, CT*

**COOPER & SMITH**

**FINE ART**

10 Main Street [www.coopersmithgallery.com](http://www.coopersmithgallery.com) Essex, CT

**A toast to  
our friend  
Flo.**

Booming Art Colony  
to World-class museum  
and National historic  
landmark. With all  
our help, the story  
of Florence Griswold  
will never end.



digital creative content

[drinkcaffeine.com](http://drinkcaffeine.com)

Willard Metcalf, May Night, 1906, National Gallery of Art

Grand Opening Coming Soon In August

Ramen and Asian Cuisine

MON-THU: 11:00 AM - 10:00 PM  
 FRI-SAT: 11:00 AM - 11:00 PM  
 SUNDAY: 11:00 AM - 09:00 PM



**Daddy's Noodle Bar**

Call Us @ (860) 451-8065  
 Or @ (860) 451-8035  
 Email Us @ DNBLLC2@gmail.com

Locations:  
 East Lyme, 100 Warden Rd, East Lyme, CT 06321  
 East Hartford, 441 Main Street, East Hartford, CT 06108  
 Storrs, 1 Day Lane, Storrs, Storrs, CT 06267

# The All Pro Pledge to You







All Pro Automotive doesn't just sell tires. We provide the **SERVICE** your vehicle needs to maximize the value and mileage of the tires we sell. At All Pro Automotive we give our customers the **INDIVIDUAL ATTENTION** you deserve.

**MICHELIN BFGoodrich UNIROYAL BRIDGESTONE Firestone YOKOHAMA GENERAL TIRE Continental**

www.allproautomotive.com 147 Boston Post Road, Old Lyme 860.434.2265

Jodi Strycharz is Proud to Support  
*In Coral Seas* at the Florence Griswold Museum



**JODI STRYCHARZ**  
 (860)884-3011

**COLDWELL BANKER** | **GLOBAL LUXURY.**

LISTING & SELLING EXCEPTIONAL PROPERTIES ALONG THE SHORELINE

# Where Beautiful Gardens Begin...



Professional Landscape Design Team  
 Experienced Installation Craftsmen  
 Complete Garden Installation  
 Tumbled Paver Walks and Patios  
 Classic Fieldstone Walls  
 Dramatic Garden Lighting  
 Vibrant Water Gardens  
 Economical Hydroseeding  
 Sitework and Grading  
 ...and much more.



**860-859-3100 burnettslandscaping.com CT Lic. # 608952**





(860) 739-5032  
(860) 739-8917

P-1 200447  
S-1 300568  
E-9 105292

*Niantic Plumbing  
& Appliance Co. Inc.*

40 PENNSYLVANIA AVENUE  
NIANTIC, CONNECTICUT 06357

ROBERT CUTILLO

JOHN CUTILLO

**OLD LYME INN**

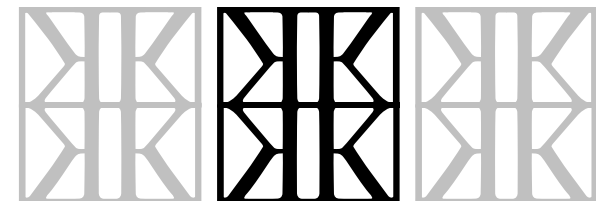
**TASTE**

**STAY**

**GROOVE**

85 Lyme Street | Old Lyme, CT | (860) 434-2600 | oldlymeinn.com | thesidedoorjazz.com

INTERIOR ARCHITECTURE, DESIGN & DECORATION



JEAN CALLAN KING  
INTERIOR DESIGN LLC

WWW.JCKINTERIORDESIGN.COM

42 Hopyard Road :: East Haddam Connecticut 06423 :: 860.434.8816





# Pampered Pets

Grooming Salon  
and Boutique

775 Boston Post Rd  
Old Saybrook, CT  
06475

**860-388-1862**




ESTD  2002

ashlawn farm  
**COFFEE**

**WHY  
FARMERS  
RISE  
EARLY**


farmcoffee.com

SAYBROOK JUNCTION  
455 BOSTON POST RD | OLD SAYBROOK, CT 06475  
CAFE: (860) 339-5663 | ROASTERY: (860) 391-8492



**The Williams School**  
Independent • College Preparatory • Day School

GRADES  
6-12



**Apply Today!** Transportation, Tuition Assistance,  
and Merit Scholarships Available

Begin your child's journey:  
williamschool.org/inquire  
The Williams School  
on the campus of Connecticut College in New London

**ANDREW RUBENOFF : DESIGN**

38 SPERRY STREET NEW HAVEN, CT 06511 (203) 562-0001  
ANDREWRUBENOFF.COM



## Here's to the art of growth

May the 2019 Florence Griswold Benefit Auction keep the museum on the path to becoming more vibrant, beautiful, and stronger than ever before.



**Wilber & King**

*Where Gardens Take Root*

# GUY'S OIL

## SERVICE STATION INC.

- Fuel • Kerosene • Diesel
- Automatic Delivery
- Budget Plans/Discounts
- Pre-Pay Program
- 24 Hour Service
- Service Contracts
- Boiler & Furnace Installations
- Oil Tank Removal

LIC# B3 305555 HOD#154

**"WHERE SERVICE IS FIRST"**

**860.739.8700**

Serving Southeastern Connecticut Since 1939  
A Family Owned & Operated Business

[www.guysoil.com](http://www.guysoil.com)



*Philip Alexius de Laszlo  
Sold for \$54,875*

**Winter Associates**

*Auctioneers & Appraisers*

21 Cooke Street • Plainville, CT 06062

860-793-0288

[www.AuctionsAppraisers.com](http://www.AuctionsAppraisers.com)

Established in 1979, Winter Associates, Inc. is a regional leader in personal property appraisal and liquidation.

Trusted appraisers for insurance, financial planning, and estate settlement purposes, we also offer auction services ranging from the sale of a single item to leaving a home "broom clean."

Give us a call. You'll get professional advice and service and the peace of mind knowing you don't have to do it all yourself.

**Being sure** is knowing there's a helping hand nearby.

Smith Brothers is proud to support the Florence Griswold Museum.

**SmithBrothers.**  
**Be sure.**

Insurance | Surety | Risk Management | Benefits | Financial

2 North Main Street Chester CT

860-526-9587 **SmithBrothersUSA.com**

Glastonbury CT | Chester CT | Niantic CT | Somers CT | Windsor Locks CT | Easthampton MA | Haddonfield NJ  
Smith Brothers Insurance, LLC





A Fresh and Ageless Collection of Chic and Effortless Fashion

Shop In-Store or Online

1 North Main Street Chester 860.322.3388 theelistshop.com



**ZELEK ELECTRIC CO.**

187A Boston Post Rd.

Po Box 897

Old Lyme, CT 06371-0897

- Solar Installations
- Bucket Truck Available
- Electrical Upgrades
- Generators Sales and Installation
- Home or Business wiring
- Lightning Protection
- Residential, Commerical and Industrial Wiring
- Family Owned and Operated
- All phases of electrical wiring

*BIG enough to get the job done; SMALL enough to care!*

Office 860.434.9726 Fax 860.434.1525

(860) 434-5333

**KITCHINGS & POTTER, LLC**

Counselors at Law

- Estate and tax planning
- Wills and trusts; charitable gifts
- Probate law; estate administration

Suzanne D. Kitchings  
Edward B. Potter

5-1 Davis Road, PO Box 187  
Old Lyme, CT 06371

**JONATHAN D. CARLISLE**  
**ATTORNEY AND COUNSELLOR AT LAW**

**180 Westbrook Road**  
**Essex, Connecticut 06426**

Practice Concentration: Wills, Trusts, Tax-efficient transfers,  
Estate Planning, Estate and Trust  
administration and related  
documentation: Complex as well as  
simple property transactions

Mailing address:  
P.O. Box 800  
Essex, CT 06426

Phone: (860) 767-0067  
Fax: (860) 767-5050  
E-mail: jdcarlisleassoc@aol.com



YOUR REGIONAL NON-PROFIT CENTER FOR THE PERFORMING ARTS, FILM & EDUCATION



### MANHATTAN SHORT FILM FESTIVAL 2019

SUNDAY, OCTOBER 6, 2019 | 3:00 PM

Join MANHATTAN SHORT Film Festival September 26 - October 6, 2019, when over 100,00 film lovers in over 350 cities across six continents gather for one reason... to view and vote on the Finalists' Film in the 22nd Annual MANHATTAN SHORT Film Festival.

### JUSTIN HAYWARD OF THE MOODY BLUES

SATURDAY, OCTOBER 12, 2019 | 8:00 PM

The vocalist, lead guitarist and composer for The Moody Blues is joined by Mike Dawes for the "All the Way and More" Tour.

### IT WAS FIFTY YEARS AGO TODAY TOUR 2019

FRIDAY, OCTOBER 18, 2019 | 8:00 PM

A Tribute to The Beatles' White Album featuring an all-star band including Christopher Cross, Todd Rundgren, Micky Dolenz (The Monkees), Jason Scheff (Chicago) and Joey Molland (Badfinger) pays tribute to The Beatles White Album with a special 50th Anniversary show, performing their greatest hits along with songs from The Beatles' White Album!

Department of Economic and  
Community Development  
Office of the Arts

WWW.GARDEARTS.ORG | 860.444.7373 X1 | 325 STATE STREET | NEW LONDON, CT 

## Shore Discount Liquors

Extensive wine selection, beer, soda, liquor

Ice and lotto FREE DELIVERY!!!!

SERVING DEEP RIVER FOR 25 YEARS

211 Main Street  
Deep River, CT 06417

860.526.5197 Phone

860.526.5413 Fax

WnBrSeller@aol.com — www.shorediscountliquors.com



## 2019 SEASON

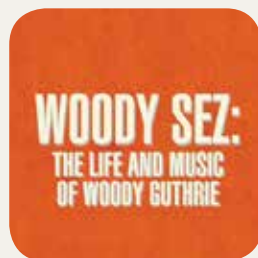
### TICKETS ON SALE NOW!



### SHEAR MADNESS

Written by Paul Portner

SEPTEMBER 18TH – OCTOBER 6TH



### WOODY SEZ

### THE LIFE AND MUSIC OF WOODY GUTHRIE

Devised by David M. Lutken with Nick Corley and  
Darcie Deaville, Helen J. Russell & Andy Teirstein

OCTOBER 23RD – NOVEMBER 10TH

103 MAIN STREET | IVORYTON, CT 06442 | 860.767.7318 | IVORYTONPLAYHOUSE.ORG



## S.D. HALLAHAN HOUSEWRIGHT INC.

RESTORATIONS  
ARCHITECTURAL WOODWORK  
BUILDING & DESIGN

1250 BOSTON POST ROAD  
OLD SAYBROOK CT 06475  
PHONE: 860-388-1564

[www.SDHHousewright.com](http://www.SDHHousewright.com)



## THE FLORENCE GRISWOLD MUSEUM

“... once it casts its spell, holds one in its net of wonder forever.”

—JACQUES COUSTEAU



## Two Sisters Design

creative graphic solutions

Lisa Reneson   lisa@twosistersdesign.com   860.304.3220

We are proud to support the

## Florence Griswold Museum

2019 Benefit Auction & Dinner Dance



What know-how can do®

Tyler Eames  
Market Manager, VP  
752 Boston Post Road, Madison  
203-245-4512

©2019 People's United Bank, N.A. | Member FDIC

Congratulations and thank you to the  
Auction and Benefit Committees for all their  
hard work and determination in making the  
2019 Benefit Auction *In Coral Seas*  
come together so beautifully!

*Your friends,  
Judy and Renny Schoonmaker*



**Wee Faerie Village Presents**

# **SUPERTOPIA**

**SUPERHEROES' HEADQUARTERS AND HIDEAWAYS**  
**Florence Griswold Museum**  
**September 28 - October 27, 2019**

**It's a bird! It's a plane. No, it's Super-Faerie!**

Flying high and heading home to the special place where superfaeries live. Get ready to explore *SUPERTOPIA: Wee Faerie Superheroes' Headquarters and Hideaways* that features nearly three-dozen faerie-scaled creations inspired by the hideouts and command posts of superheros and villains.

*SUPERTOPIA* is generously sponsored by The ForGood Fund at the Community Foundation of Eastern Connecticut; the Joffray Family; the Friends and Family of Lorraine Lieberman in honor of her 95th Birthday; and Professional Family Solutions, LLC.

| DONORS  | ITEM No.           |
|---|--------------------|
| Brant Amacher . . . . .                                 | 530                |
| American Cruise Lines . . . . .                         | 5                  |
| Jennifer Angus . . . . .                                | 205                |
| Anonymous . . . . .                                     | 109, 505           |
| Argia Mystic Cruises . . . . .                          | 405                |
| Arne E. Ahlberg<br>American Antique Furniture . . . . . | 211                |
| Arthur Murray Dance Center . . . . .                    | 378                |
| Ashlawn Farm Coffee . . . . .                           | 516                |
| Mary L. Avery . . . . .                                 | 206                |
| Del-Bourree Bach . . . . .                              | 113                |
| Ballek's Garden Center . . . . .                        | 536                |
| Betsy Barry . . . . .                                   | 126                |
| Kate Bartlett . . . . .                                 | 516, 534           |
| Ruud H. Bergmans & Ann B. Lane . . . . .                | 121, 123           |
| Mr. & Mrs.<br>Rudolph F. Besier . . . . .               | 203, 206, 207, 208 |
| Big Night Entertainment Group . . . . .                 | 384                |
| Big Y World Class Market . . . . .                      | 523                |
| Broken Arrow Nursery . . . . .                          | 529                |
| Adrien Broom . . . . .                                  | 107, 108           |
| Anne Burr Czepiel . . . . .                             | 115                |
| Bud & Katy Canaday . . . . .                            | 357                |
| Helen Cantrell . . . . .                                | 112                |
| CAPA & The Shubert Theatre . . . . .                    | 361                |
| Captain Lord Mansion B&B . . . . .                      | 412                |
| Don Carter . . . . .                                    | 118                |
| Catherine Christiano . . . . .                          | 122, 125           |
| City Bench . . . . .                                    | 201                |
| Connecticut Tigers . . . . .                            | 387                |
| Jeff & Betsey Cooley . . . . .                          | 306-313            |
| Judy Cotton . . . . .                                   | 100                |
| Deep River Jewelry Design . . . . .                     | 517                |
| Delamar West Hartford . . . . .                         | 404                |
| Mark Dion . . . . .                                     | 111                |
| Dog Watch Café . . . . .                                | 410                |
| The E List Store, LLC . . . . .                         | 379                |
| East Winds Resort, Ltd. . . . .                         | 3                  |
| Eastern Connecticut<br>Symphony Orchestra . . . . .     | 315                |
| EF Watermelon . . . . .                                 | 509                |

| DONORS   | ITEM No.                |
|--|-------------------------|
| Catherine M. Elliott . . . . .                 | 124                     |
| Essence Center for Beauty & Wellness . . . . . | 511                     |
| Essex Steam Train & Riverboat . . . . .        | 376                     |
| Essex Winter Series . . . . .                  | 375                     |
| Estate of Susan Minot Woody . . . . .          | 103, 116                |
| Faces Aesthetics-Skincare . . . . .            | 512                     |
| John Falstrom . . . . .                        | 358                     |
| Field House Farm . . . . .                     | 385                     |
| Florence Griswold Museum . . . . .             | 6                       |
| Fromage Fine Foods . . . . .                   | 514                     |
| Ghosts of New Haven . . . . .                  | 376                     |
| Goodspeed Musicals . . . . .                   | 386                     |
| Gourmet Galley Catering . . . . .              | 6                       |
| Gowrie Group . . . . .                         | 380                     |
| Daniel S. Hansen &<br>David D.J. Rau . . . . . | 304, 359, 386           |
| Hartford Athletic . . . . .                    | 387                     |
| Hartford Yard Goats . . . . .                  | 387                     |
| Hartford Wolf Pack . . . . .                   | 387                     |
| Hawthorne Hotel . . . . .                      | 407                     |
| Mundy Hepburn . . . . .                        | 210                     |
| HP Broom Housewright . . . . .                 | 1                       |
| idiom . . . . .                                | 518                     |
| Allan & Andrea Inglis . . . . .                | 400                     |
| The Inn at Erlowest . . . . .                  | 411                     |
| The Inn at Stonington . . . . .                | 410                     |
| The James Pharmacy Bed & Breakfast . . . . .   | 402                     |
| Jonathan Edwards Winery . . . . .              | 6                       |
| Marcia & David Kalayjian . . . . .             | 317-356                 |
| Jacqueline Kangley . . . . .                   | 515                     |
| Andrew & Diane Kaslow . . . . .                | 202, 501                |
| The Kate . . . . .                             | 377                     |
| Kebabian's Rugs . . . . .                      | 4                       |
| Drew J. Kenny, Outdoor Lifestyles . . . . .    | 504                     |
| King Richard's Faire . . . . .                 | 374                     |
| Hedy & Jim Korst . . . . .                     | 212, 213                |
| Janet Lage . . . . .                           | 114                     |
| Jac Lahav . . . . .                            | 104                     |
| Sally & Larry Lawrence . . . . .               | 301, 508, 513, 522, 526 |
| LEGO Systems, Inc. . . . .                     | 528, 533                |



## DONORS

## ITEM No.

|  |              |
|--|--------------|
| Carol LeWitt . . . . .   | 362-373      |
| The Lighthouse Preservation Society . . . . .                    | 304          |
| Ron Luich . . . . .  | 128          |
| Lyman Orchards Golf Club . . . . .                               | 391          |
| Mar Floral & Botanicals . . . . .                                | 507          |
| Margin Street Inn . . . . .                                      | 409          |
| The Mark Twain House & Museum . . . . .                          | 381          |
| Marie Martin . . . . .   | 519          |
| Courtney Mattison . . . . .                                      | 200          |
| Charlotte Meyer . . . . .  | 521          |
| Mohegan Sun . . . . .  | 405          |
| The Mohegan Tribe . . . . .                                      | 401          |
| Musical Masterworks, Inc. . . . .                                | 314          |
| Mystic Aquarium . . . . .  | 388          |
| Mystic Marriott Hotel & Spa . . . . .                            | 406          |
| Mystic Seaport Museum . . . . .                                  | 374          |
| New Haven Symphony Orchestra . . . . .                           | 383          |
| New York City Ballet . . . . .                                   | 301          |
| Nomads Adventure Quest . . . . .                                 | 376          |
| North by Northeast Enterprises, LLC . . . . .                    | 523          |
| Ocean House . . . . .  | 305          |
| Old Lyme Country Club . . . . .                                  | 303          |
| Old Lyme Inn & The Side Door . . . . .                           | 382          |
| Overland Experts, LLC . . . . .                                  | 300          |
| Paddleworks SUP & Kayak Shop<br>with Harborside Marina . . . . . | 392          |
| Patricia Spratt for the Home . . . . .                           | 510          |
| Paul C. Lirot Jewelers . . . . .                                 | 524          |
| Michaelle Pearson-Absinthine Jewelry . . . . .                   | 535          |
| The Perfect Pear . . . . .                                       | 359          |
| James Prosek . . . . .   | 105          |
| John & Dyanne Rafal . . . . .                                    | 383, 317-356 |
| David D.J. Rau . . . . .   | 204          |
| The Red Door Salon & Spa . . . . .                               | 406          |
| Lisa Rhodes . . . . .  | 377, 389     |
| Renni Ridgeway-Korsmeyer . . . . .                               | 129          |
| Rob Rivers, The Salon & Spa . . . . .                            | 520          |
| J. Stone & Betsey Roberts . . . . .                              | 2            |
| The Rockwell Family . . . . .                                    | 500, 502     |
| Tom Rose & Black Whale Antiques . . . . .                        | 117          |

## DONORS

## ITEM No.

|  |               |
|--|---------------|
| Ruth Hendel Productions . . . . .                      | 316           |
| Salem Witch Museum . . . . .                           | 407           |
| Salon Pure . . . . .                                   | 527           |
| Chelsea Salyer . . . . .                               | 360           |
| Shannon's Fine Art Auctioneers . . . . .               | 120           |
| Seaside Wine & Spirits . . . . .                       | 514           |
| The Shop at the<br>Florence Griswold Museum . . . . .  | 506           |
| Silver Trails - The Animal Inn . . . . .               | 534           |
| Katherine Simmons . . . . .                            | 106           |
| Simon Pearce . . . . .                                 | 510           |
| Barbara Smith . . . . .                                | 403           |
| Susan & Robert Staab . . . . .                         | 408           |
| Janie & Alix Stanley . . . . .                         | 214           |
| Christopher B. Steiner . . . . .                       | 119           |
| Rebecca & Christopher Steiner . . . . .                | 127           |
| Brian Keith Stephens . . . . .                         | 101           |
| Stonington Country Club . . . . .                      | 302           |
| Gregory Strupes . . . . .                              | 388, 525, 530 |
| Supercharged Indoor<br>Karting & Trampolines . . . . . | 374           |
| Thimble Island Brewing Company . . . . .               | 6, 523        |
| Total Design Source, LLC . . . . .                     | 532           |
| Travelers Championship . . . . .                       | 390           |
| Howard G. Tuttle, Jr. . . . .                          | 303           |
| Katie Tuttle . . . . .                                 | 315, 361      |
| Van Wilgen's Garden Center . . . . .                   | 531           |
| Vitality Spa & Wellness . . . . .                      | 525           |
| Lori Warner . . . . .                                  | 102           |
| Water Bike Tours of Old Saybrook . . . . .             | 389           |
| Water's Edge Resort & Spa . . . . .                    | 392           |
| Jared Welcome . . . . .                                | 209           |
| Wesleyan University Press . . . . .                    | 362-373       |
| The Whaler's Inn . . . . .                             | 405           |
| Wilber & King Nurseries . . . . .                      | 503           |
| Elisabeth Wilds . . . . .                              | 110           |
| Yale Repertory Theatre . . . . .                       | 393           |

## Reimagined Water Management Solutions



**INFILTRATOR®**  
water technologies



Protecting  
water quality

across America with  
millions of **environmentally**  
**friendly** wastewater systems.

4 Business Park Road, Old Saybrook, CT 06475  
(800) 221-4436 • [www.infiltratorwater.com](http://www.infiltratorwater.com)



*The Place to Go for Gourmet to Go*

## **HOURS:**

Monday-Friday 8-6

Saturday 8-5:30

Sunday 9-3

**860-395-1452**

[pastavita.com](http://pastavita.com)

**225 Elm Street  
Old Saybrook CT  
06475**

